



TOHOKU
UNIVERSITY



DISCOVER
TOHOKU UNIVERSITY
www.tohoku.ac.jp/en

**WORLD-LEADING
UNIVERSITY**

#1 

Ranked No. 1 in Japan
for **five consecutive years**
by the Times Higher Education
Japan University Rankings
(2020-2025)

**FOUNDED IN
1907**



Over 119 years of
history as Japan's third
national university

TOHOKU UNIVERSITY, SENDAI CITY, MIYAGI PREFECTURE, JAPAN



WHY TOHOKU UNIVERSITY?

**TOTAL NUMBER
OF STUDENTS**
~18,000



(As of May 1, 2025)

**INTERNATIONAL
STUDENTS**
3,777

FROM 100 COUNTRIES



(As of FY2024)

**STUDENTS
CLUBS & CIRCLES**
~190



(As of FY2024)

**GLOBAL
PARTNERS**
242



(As of December 1, 2025)

**SCHOOLS
AND CAMPUSES**

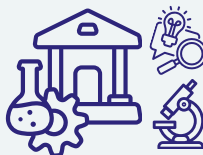


10 UNDERGRADUATE
SCHOOLS
18 GRADUATE
SCHOOLS
4 CAMPUSES

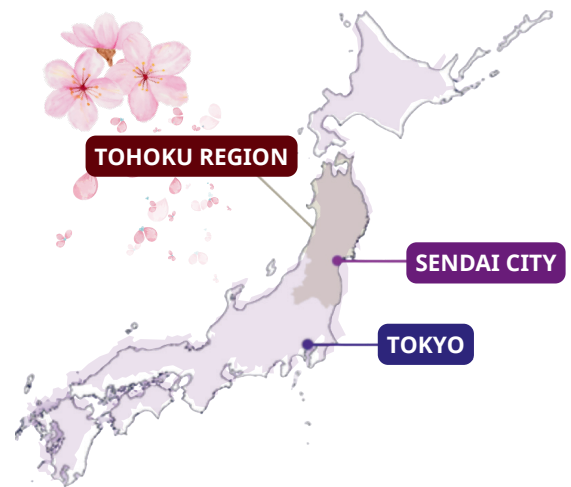
(Tohoku University Guide 2026-2027)

**RESEARCH
INSTITUTES**

6



(Tohoku University Guide 2026-2027)



Why Sendai?



Bullet Train / Shinkansen
→ 1.5 hours from Tokyo



Home to **1.1 million+** residents
and **70,000+** students.



ACCOMMODATION



Tohoku University offers comfortable and affordable accommodation with excellent facilities to support student life and academic success.



University Dormitory (Monthly):

Approx. JPY 30,000

Private Apartment (Monthly):

JPY 40,000 – JPY 70,000



EXPLORE ACCOMMODATION OPTIONS



STUDENT SUPPORT



Comprehensive academic and daily life support to help you navigate a new country and language.



INTERNATIONAL SUPPORT CENTER



CLUBS, CIRCLES, AND ASSOCIATIONS



CAREER SUPPORT OFFICE



FIELDS OF STUDY



GATEWAY COLLEGE, AN ENGLISH-TAUGHT UNDERGRADUATE PROGRAM



JAPANESE-TAUGHT UNDERGRADUATE PROGRAMS



M: Materials Science and Engineering.

D: Education, Psychology, Ethics, Linguistics, English Literature, Pharmaceutical Sciences.

M Humanities and Social Science

D: Law, Politics, Economics, Management, International Relations, Language Sciences, Social Science, Social Engineering.

M STEM and Medicine

D: Engineering (Mechanical, Aerospace, Civil, Environmental), Science, Information Science, Life Sciences, Medicine, Dentistry, Architecture and Building Science, Agricultural Science, Social and Safety Systems, Environmental Studies, Natural Disasters, Disaster Prevention.



LEARN MORE ABOUT ENGLISH-TAUGHT UNDERGRADUATE AND GRADUATE PROGRAMS



TUITION AND FEES

ALL FEES ARE SHOWN IN JAPANESE YEN (JPY)



Application Fee (One-time):

Undergraduate Students: JPY 17,000

Graduate Students: JPY 30,000



Admission Fee (One-time): JPY 282,000



Tuition Fee (Annually):

International Students: JPY 900,000

Domestic Students: JPY 535,800

※ International Students are defined as those who require a student visa. Domestic Students are defined as those who do not require a student visa.



Living Expenses (Monthly):

JPY 53,000 – JPY 66,000

Includes utilities, phone, and food expenses.

Enrolling from April 2027 onwards: Tuition fees will be revised for new Undergraduate and Master's students. Enrolled up to the 2026 academic year: Tuition fees will remain unchanged for the standard duration of your program.



SCHOLARSHIPS FOR INTERNATIONAL STUDENTS



Study in Sendai, Miyagi, Japan

A safe, welcoming, and inspiring environment for your future.



Get Updates: Admissions for International Students

