



TOHOKU UNIVERSITY GUIDE

For Prospective International Students

2019-2020

TOHOKU UNIVERSITY GUIDE
For Prospective International Students
2019-2020

Global Learning Center / Student Exchange Division
Education and Student Support Department Tohoku University
41 Kawauchi, Aoba-ku Sendai, Miyagi 980-8576 JAPAN
<https://www.insc.tohoku.ac.jp/>

東北大学 グローバルラーニングセンター／教育・学生支援部留学生課
〒980-8576 宮城県仙台市青葉区川内41
<https://www.insc.tohoku.ac.jp/>

東北大学 留学案内 2019-2020

Tohoku University, Creating Global Excellence

Over more than a century of history, Tohoku University's tradition of Research First, philosophy of Open Doors and ethos of Practice-Oriented Research and Education have produced excellent graduates, generated numerous research achievements and contributed to the development of a **peaceful and just society**.

Today, the world embarks upon a new global age, characterized by the globalization of the economy, the movement of people, rapid advances in information technology and the dissemination of knowledge. In times such as these, our university must continue its endeavors to create new value, of course in Japan, but also with the intent of contributing significantly to the **stability and development of the international community**.

Tohoku University therefore wishes to be an international hub where talented students and researchers can **"gather, learn and create."** They will rise to face various global changes and challenges and contribute to the development of the world and Japan. Tohoku University will continue to pave the way for societal paradigm shifts, conduct excellent education and research to **take the initiative in the global age** and maintain its status as a world-renowned university.

DATA

About Tohoku University
As of November 1, 2018

Total number of students
学生数(正規課程在籍者)

17,760

Undergraduate Students
学部生

10,828

Graduate Students
大学院生

6,932

Faculty
教員

3,152
(As of May 1, 2018)

International Students
外国人留学生

2,255 229

Partner Institutions
協定大学・機関

Library Collection
図書館蔵書

4,142,543
volumes
(As of March 31, 2018)



Why Tohoku University?

With its location in the green environment of the city of Sendai in northeastern Japan, Tohoku University has been offering academic excellence for over a century. It has long enjoyed the reputation of being one of the most liberal universities in the country as well as an institution that places a particularly strong emphasis on leading-edge research.



Open Institution

Since its foundation in 1907 as Japan's third national university, Tohoku University has been open to diverse talents and values: Tohoku University was the first Japanese university to accept female and international students over a hundred years ago and this inclusive tradition certainly continues today. Currently, around 2,000 international students from some 100 countries and territories are enrolled, creating a dynamic multi-cultural learning atmosphere on the campus. Tohoku University's emphasis on openness and equality means that we value students and academics with diverse backgrounds and welcome them as an integral part of our university community.

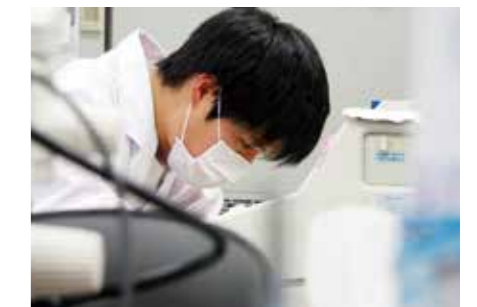
Study Environment

About 18,000 students are currently enrolled in 10 undergraduate departments and 15 graduate schools. Tohoku University boasts about 3,000 highly engaged faculty members, who actively interact with students in classrooms and research laboratories. A student-to-faculty ratio of 6:1 enables us to offer a personalized learning environment with special emphasis on research. On our lively campus, surrounded by nature, students not only strive for academic excellence, but achieve personal growth and prepare to become future leaders in every endeavor they will pursue through various extracurricular and social activities.



Cutting-Edge Research

Strong emphasis on quality research has always been our tradition. From fundamental discoveries to large-scale practical applications for everyday life, Tohoku University's research outcomes have deeply impacted our way of thinking and our way of living. Several recent world university rankings have recognized Tohoku University's research strength and competitiveness in physics, chemistry, materials science and engineering and many other fields. In this advantageous setting, students have unparalleled learning and research experiences, enabling them to acquire scientific skills through classroom teaching by our world-class research faculty as well as actual laboratory activities by students themselves.



Social and Community Role

"Practice-Oriented Research and Education" has long been one of the core values of Tohoku University, whereby the fruits of leading-edge research are put to practical use for the benefit of society and toward improving living standards. In keeping with the Open Door policy, various facilities of Tohoku University are available to the public. The university actively supports mid-career education and maintains community involvement through science cafés, international festivals, delivery classes, providing classroom experience and promoting lifelong learning.



Reconstruction Action

Tohoku University's commitment to its community role was demonstrated in the aftermath of the Great East Japan Earthquake of March 11, 2011. Tohoku University was one of the institutes of higher education at the center of the disaster area and the university has undertaken considerable efforts toward reconstruction and revitalization of the local region. The focus of these endeavors is on establishing new industries through close collaboration with industry and government agencies so as to boost employment and invigorate the Tohoku region. These efforts are in turn serving as a stimulus to the Japanese economy as a whole.



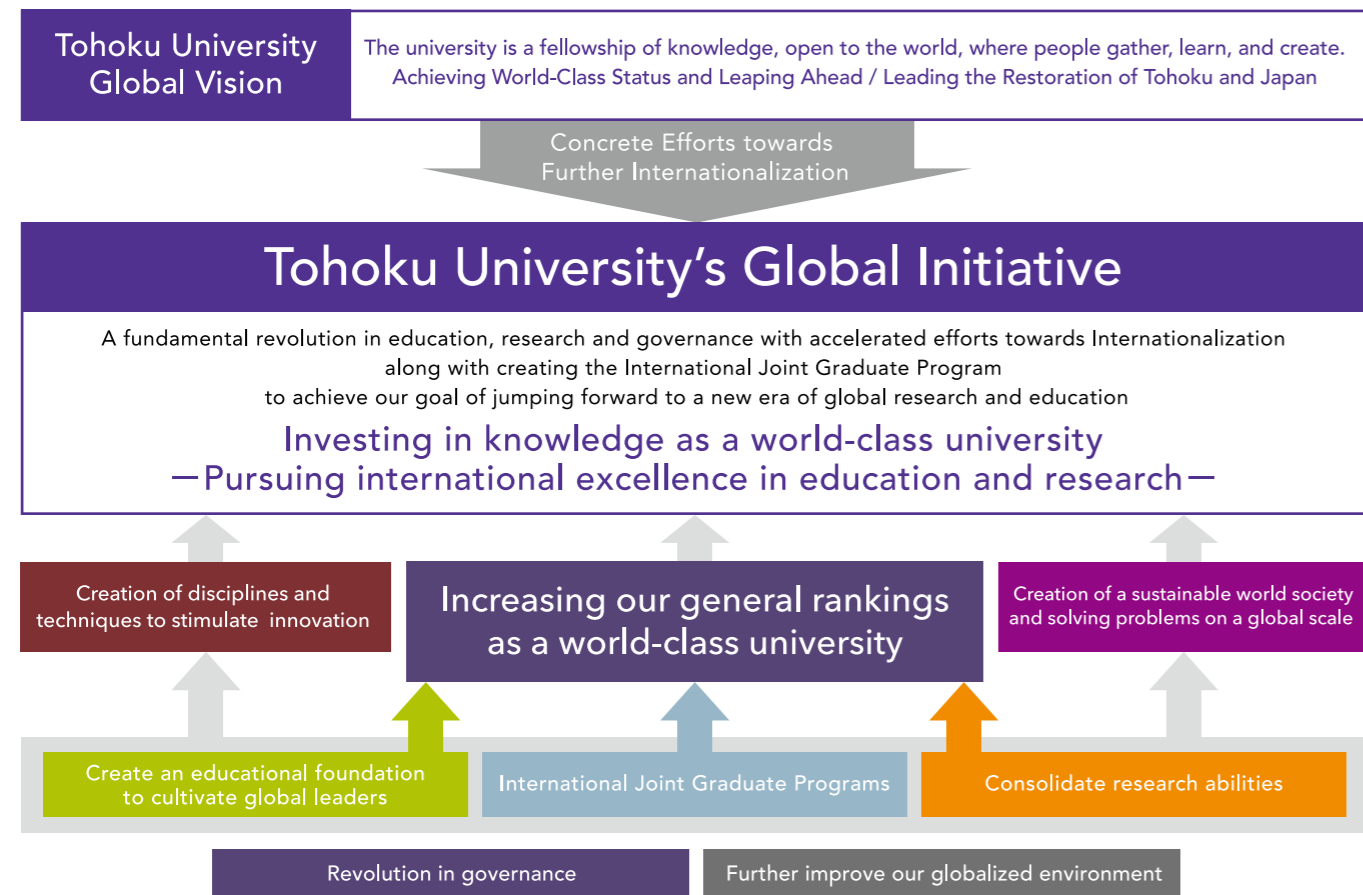
MEXT Top Global University Project

Tohoku University has been selected for the FY2014 Top Global University Project, a higher education reform initiative launched by Japan's Ministry of Education, Culture, Sports, Science and Technology (MEXT).

The MEXT program aims to raise Japan's global competitiveness in higher education by supporting internationalization and reform efforts at select institutions. Tohoku University's reform initiative is called "Tohoku University's Global Initiative" and is categorized as "Type A: Top Type" in the Top Global University Project.

Under this framework, we intend to further accelerate the initiatives we have undertaken with the "Global 30 Project" and the "Go Global Japan Project" to create a new global education. Further, based upon this new global education, we aim to form strong partnerships with overseas universities, with the goal of entering the world's Top Ten Ranking in the fields of Spintronics, Materials Science, Cosmological Physics, Earth Science, and Mechanical Systems as well as pushing for developments in the new disciplines of Data Science, Life Sciences, and Disaster Reduction/Safety Science, and Japanese Studies founding the International Joint Graduate Program in a total of nine fields. Additionally, we will also seek cooperation in the foundation of our "Tohoku Forum for Creativity" and other measures aimed at consolidating our research strength.

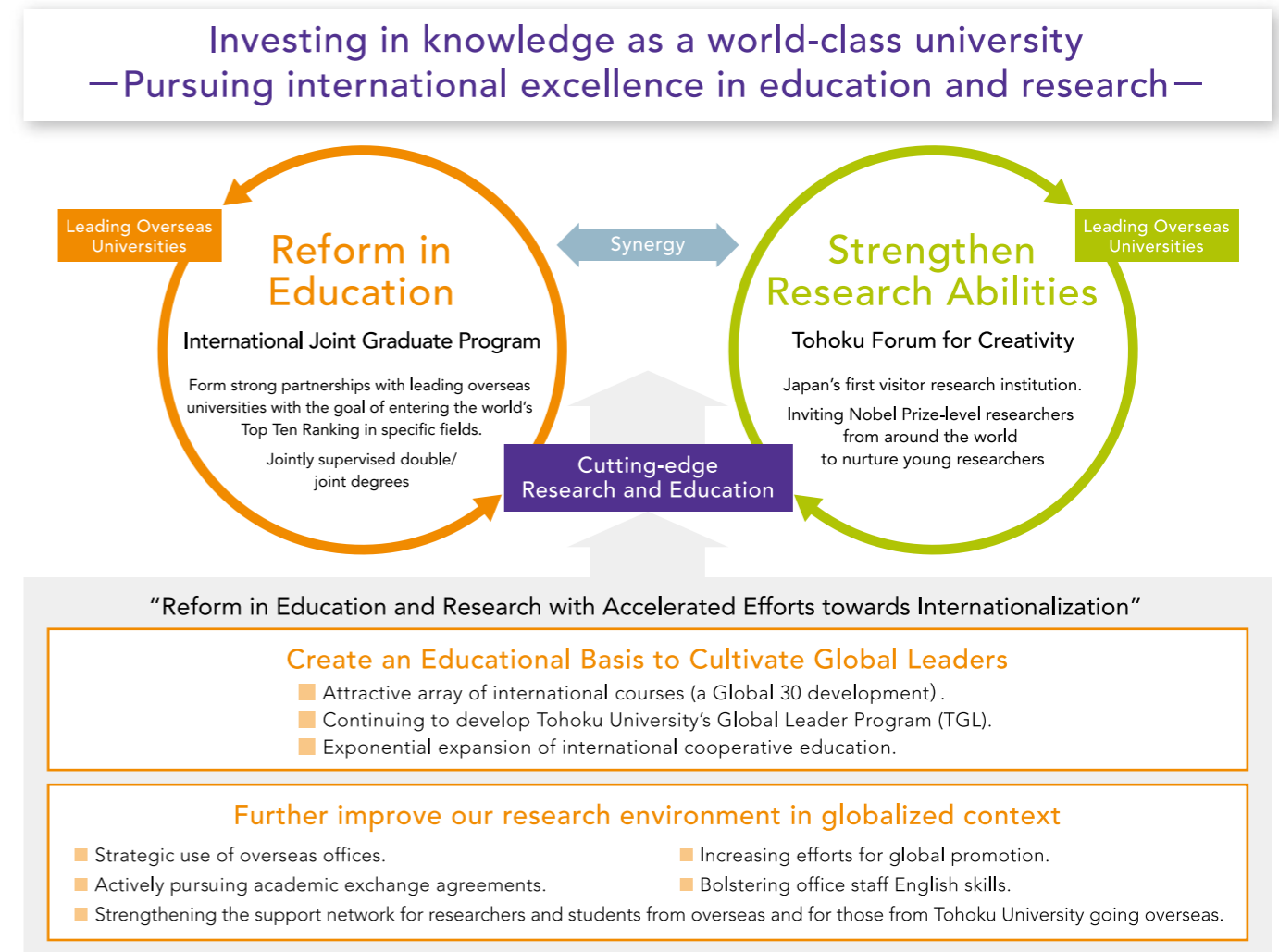
Outline of Tohoku University's Top Global University Project



What is Tohoku University's Global Initiative?

Tohoku University plans to raise their level of internationalization, strengthen their education and research abilities, grow into a world class university, and play a main role in developments that will benefit Japan and the entire world. Achieving this will require brilliant young minds from across Japan

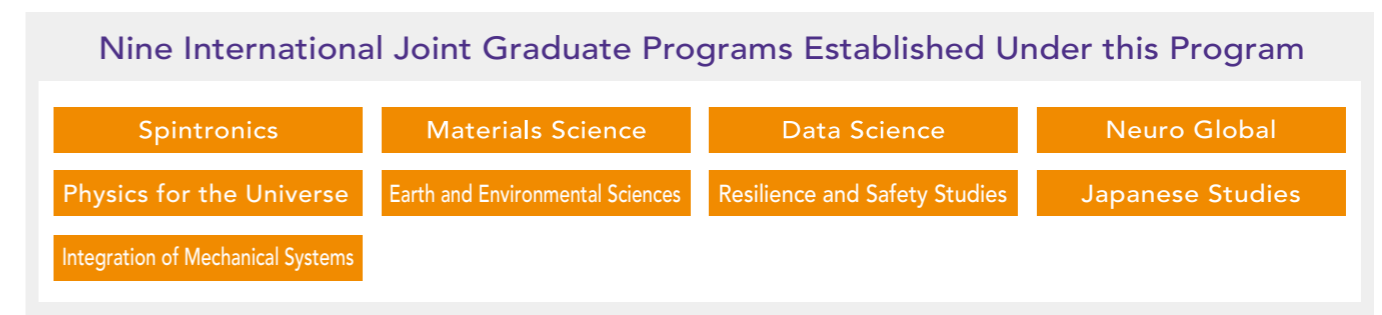
and the world and creating a place that will "allow people to gather, learn and create", and through high level education, create real change in society, while giving these young people a high level "global mindedness".



Foundation of International Joint Graduate Programs

- Using Tohoku University's strengths to make contributions to fields that will be important to humanity in the future, and to raise the level of global society.
- Gather the knowledge of Tohoku University's different departments to overcome the boundaries between disciplines and form strong cooperative education ties with leading overseas universities.

Ideas and Roles	Breakdown
<ol style="list-style-type: none"> Match present needs and cultivate highly capable human resources across the world. Develop cutting-edge education programs which are also increasing our research abilities. Create an intellectual foundation for the future, support international competition, and create innovation to aid in the creation of a sustainable global society. 	<ul style="list-style-type: none"> Interdepartmental graduate programs. Jointly supervised instruction between Tohoku University and overseas institutions. Plan to have a minimum of nine programs in five years.



Global Network

グローバルネットワーク

(As of January 1, 2019)

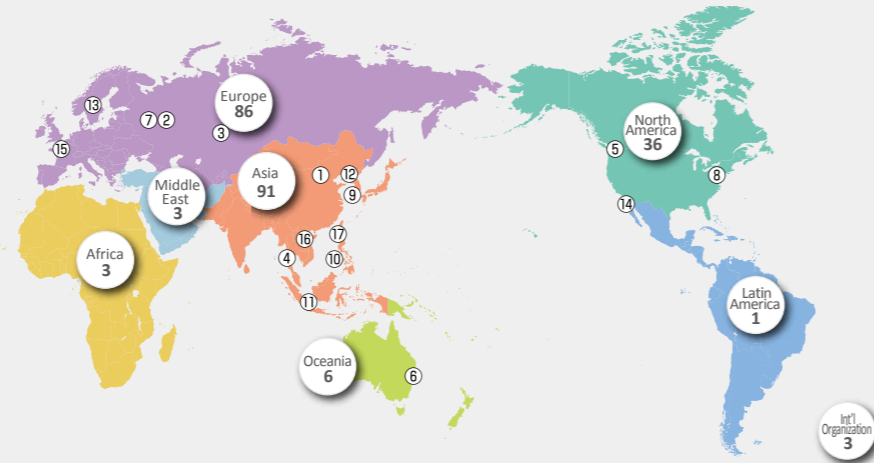
Partnership with 229 world-leading institutions in 35 countries and regions

Tohoku University's unique global partnership network has been created through academic exchange agreements with many top educational institutions around the world.

The university is developing various study abroad programs and expanding its research presence around the world.

世界トップレベルの教育機関と協定 (35か国・地域 229機関)

東北大学は世界各国の教育・研究機関との間で大学間または部局間の学術交流協定を締結。学生・教員の交流を積極的に進めており、教育・研究の舞台は世界へと広がっています。



Facilities Worldwide

Overseas Offices

Overseas Office	Established Date
① Tohoku University China Office (Beijing)	(April 20, 2007)
② Tohoku University Russia Office (Japanese Inter-University Russia Office) (Moscow)	(September 11, 2010)
③ Tohoku University Russia Office Siberia Branch (Novosibirsk)	(September 11, 2010)
④ Tohoku University Thailand Office (Bangkok)	(March 14, 2016)
⑤ University of Washington-Tohoku University: Academic Open Space (UW-TU: AOS) (Seattle)	(April 14, 2017)

Liaison Offices

Institution (Location)	Country/Region (Starting Date)	Liaison Office	Department/Institute of TU
⑥ The University of New South Wales (International Office)	Australia (May 17, 2002)	Liaison Office of Tohoku University	Institute of Fluid Science Graduate School of Law
⑦ Moscow State University (Faculty of Physics)	Russia (June 21, 2002)	Liaison Office of Tohoku University	Institute of Fluid Science Graduate School of Engineering
⑧ Syracuse University (L. C. Smith College of Engineering and Computer Science)	USA (November 11, 2003)	IFS Syracuse Office	Institute of Fluid Science
⑨ Korea Advanced Institute of Science and Technology (Department of Mechanical Engineering)	South Korea (December 18, 2003)	Liaison Office of Tohoku University	Institute of Fluid Science
⑩ Research Institute for Tropical Medicine	Philippines (May 1, 2007)	Tohoku-RITM Collaborating Research Center on Emerging and Reemerging Infectious Diseases	Graduate School of Medicine
⑪ Institut Teknologi Bandung	Indonesia (August 2, 2011)	International Environmental Leadership Program, Graduate School of Environmental Studies ※Program name change at the occasion of the agreement (effective March 23, 2015)	Graduate School of Environmental Studies
⑫ Seoul National University (College of Engineering)	South Korea (December 1, 2011)	The Partnership Offices of the Schools of Engineering, etc., of the Four Japanese Universities, Japan and the College of Engineering, Seoul National University, Korea	Graduate School of Engineering
⑬ Royal Institute of Technology (Faculty of Mechanical Engineering)	Sweden (June 28, 2012)	Liaison Office of Tohoku University	Institute of Fluid Science Graduate School of Engineering
⑭ The University of California, Riverside	USA (February 1, 2013)	Tohoku University Center	Institute for Excellence in Higher Education
⑮ Université de Lyon (Materials Science and Physical Metallurgy Laboratory, Institut National des Sciences Appliquées de Lyon)	France (June 2, 2015) ※Encouraged by the existence of the INSA Lyon - Tohoku University Liaison Office since January 23, 2004	Liaison Office of Tohoku University	Institute of Fluid Science Graduate School of Engineering Institute of Development, Aging and Cancer Graduate School of Medicine
⑯ Foreign Trade University	Vietnam (December 19, 2015)	TU-FTU Cooperation Office	Institute for Excellence in Higher Education
⑰ National Chiao Tung University (College of Electrical and Computer Engineering)	Taiwan (May 4, 2017)	Liaison Office of Tohoku University	Institute of Fluid Science New Industry Creation Hatchery Center Graduate School of Engineering Graduate School of Science and Faculty of Science Advanced Institute for Materials Research

Consortia with World's Top Universities

世界トップクラスの大学間コンソーシアム

Tohoku University has entered into a number of international university consortia in order to foster exchange between researchers and students from Tohoku University and various regions and nations. You will probably have the chance to participate in international symposiums, workshops and seminars held by these consortia.

東北大学は様々な地域や二国間での研究者や学生の国際交流を目的とした国際的の大学間コンソーシアムに加盟しています。学生にもコンソーシアムが開催するシンポジウム、ワークショップ、セミナーなどに参加する機会を提供しています。

APRU

Association of Pacific Rim Universities

Established: 1997
Membership since: 2008
Participating Institutions: 50

環太平洋大学協会

APRU was established in 1997 with the aim of fostering cooperation in education and research contributing to economic, scientific and cultural advancement and has grown rapidly to become a reputable international organization of leading research universities in 17 economies of the Pacific Rim.

As the Voice of Knowledge and Innovation for the Asia-Pacific region, APRU brings together leaders, researchers, and policy-makers to exchange ideas and collaborate on effective solutions to the challenges of the 21st century.

As part of Tohoku University's active participation, we have taken on the role of regional program hub for APRU's Multi-Hazards Program from 2013.

APRU (アプル)は、環太平洋圏の主要大学間の相互交流を深めることを通じて、環太平洋地域社会にとって重要な諸問題に対し、教育・研究の分野から協力・貢献することを目的に、1997年に設立された地域型のコンソーシアムです。本学は2013年からマルチ・ハザードプログラムのプログラムハブを務め、毎年サマースクールやワークショップを開催しています。



<https://apru.org/>

AEARU

The Association of East Asian Research Universities

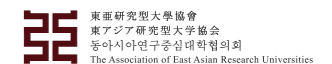
Established: 1996
Membership since: 1998
Participating Institutions: 19

東アジア研究型大学協会

AEARU was established in 1996 with the goals of forming a forum for the presidents of leading research-oriented universities and carrying out mutual exchanges between the major universities in East Asia.

Expectations are that this regional consortium, on the basis of common academic cultural backgrounds among member universities, will contribute not only to the development of higher education and research but also to the opening up of a new era leading to cultural economic and social progress in the region.

AEARU (アエール)は、東アジアの主要な研究型大学の研究者及び学生の交流、共同研究の推進、ワークショップ等の開催など、大学間の共通の関心に基づく交流を行うことを目的に、1996年結成された地域型のコンソーシアムです。



<http://www.aearu.com/>

T.I.M.E.

Top Industrial Managers for Europe

Established: 1989
Membership since: 2007
Participating Institutions: 56

欧州トップレベルエンジニア養成ネットワーク

T.I.M.E. is an international network of leading higher educational institutions specializing in engineering focused on master-level double degree programs. It now launches other innovative exchange programs through task forces formed by member institutions to foster internationally competitive engineers for tomorrow's world.

T.I.M.E. (タイム)は、ヨーロッパの主要な理工系大学における修士・博士課程レベルでのダブルディグリープログラムによる交流を通じ、トップレベルのエンジニアを養成することを目的に、1989年に設立された地域型のコンソーシアムです。



<https://www.time-association.org/>

HeKKSaGOn

German-Japanese University Alliance (HeKKSaGOn): Heidelberg, Kyoto, Karlsruhe, Tohoku (in Sendai), Göttingen, Osaka-network

Established: 2010
Membership since: 2010
Participating Institutions: 6

日独6大学アライアンス

HeKKSaGOn, a German-Japanese University Network founded in 2010, is a bilateral university network composed of three Japanese and three German research-intensive universities (Kyoto, Osaka, Tohoku; Göttingen, Heidelberg and Karlsruhe) that aims to further develop international cooperation and the exchange of ideas in education, research and innovation to further advance science, technology, industry and culture between member universities. It brings together two of the world's high-tech countries facing similar challenges in society like Global Change and Adaptation.

HeKKSaGOn (ヘキサゴン)は、日本(京都大学、大阪大学、東北大学)とドイツ(ゲッティンゲン大学、ハイデルベルク大学、カールスルーエ工科大学)の大学の研究者及び学生の交流、共同研究の推進、サマースクール等の開催など、日独大学間の交流を推進することを目的に、2010年に結成された二国間型のコンソーシアムです。



<https://www.hekksagon.net/>

RENKEI

Japan-UK Research and Education Network for Knowledge Economy Initiatives

Established: 2012
Membership since: 2012
Participating Institutions: 12

日英大学間連携プログラム

RENKEI, the Japan-UK Research and Education Network for Knowledge Economy Initiatives, is a bilateral consortium that was formed in 2012 by leading universities from Japan and the UK under the support of the British Council. Its aim is to further knowledge exchange and research collaboration between institutions and individuals. This group of leading research intensive universities in the two countries will also develop collaborations with industry, governments and society to address global research challenges. The six participating Japanese universities are Osaka, Kyushu, Kyoto, Tohoku, Nagoya and Ritsumeikan. From the United Kingdom, the six members are Edinburgh, Southampton, Newcastle, Nottingham, Leeds and Liverpool.

RENKEI (レンケイ)は、日英の大学が新たな国際共同研究を創出し、政府、産業界、民間非営利団体との協働を通じてグローバル社会が抱える課題の解決への貢献を目指すことを目的に、2012年に設立された二国間型のコンソーシアムです。日本からは大阪大学、九州大学、京都大学、東北大学、名古屋大学、立命館大学の6大学が、英国からはエディンバラ大学、サウサンプトン大学、ニューカッスル大学、ノッティンガム大学、リーズ大学、リバプール大学の6大学が加盟しています。



<https://www.britishcouncil.jp/programmes/higher-education/university-industry-partnership/renkei>



Study in SENDAI

Sendai : City of Trees

Combining the convenience of a modern city with abundant natural scenery, Sendai, where Tohoku University is located, is often called “the City of Trees.” There are seasonal events throughout the year, attracting tourists from around the nation and local residents alike. Sendai is situated between the ocean and mountains, with easy access to hot spring spas, ski resorts, and the scenic coastal islands of Matsushima.

杜の都仙台

東北大学のある仙台は「杜の都」とも称され、大都市でもありながら豊かな自然を抱える美しい街です。一年を通じて様々なイベントがあり、四季折々を楽しめる街です。仙台は海と山に挟まれた立地にあり、近郊には温泉やスキー場もあり、日本三景に数えられる松島も人気の観光地です。

Climate

Sendai is characterized by a very moderate climate, yet you can experience the beauty of the four seasons. There are only a few days in summer reaching 30°C (86°F) and few days in winter colder than -3°C (26°F) and little snow.

気候

仙台は四季の変化に富みながら、穏やかな気候で暮らしやすい街です。夏でも30°Cを超える日は少なく、冬もマイナス3°C以下になる日や10cm以上の積雪もほとんどありません。

Arts and Sports

The city of Sendai offers its guests and residents a broad variety of cultural activities. The games of the city's own professional baseball, soccer, volleyball, and basketball teams are among the most popular events. There is an impressive variety of museums, galleries and concert halls. Sendai offers rich collections of art from all around Japan and overseas.

文化・美術館・スポーツ

仙台には、野球、サッカー、バスケのプロチームの拠点があり、ホームゲームには多くの市民が応援に駆け付けます。また、博物館、美術館、コンサートホールなどの施設も充実しており、音楽、演劇、芸術、歴史の世界に触れることができます。

Major Events in downtown Sendai

May 5月	Aoba Festival 仙台青葉祭り
August 8月	Tanabata Festival 七夕まつり
September 9月	Jozenji Street Jazz Festival 定禅寺通りジャズフェスティバル
December 12月	Pageant of Starlight 光のパージェント



Pageant of Starlight

写真提供: 仙台市観光交流課



Tanabata Festival

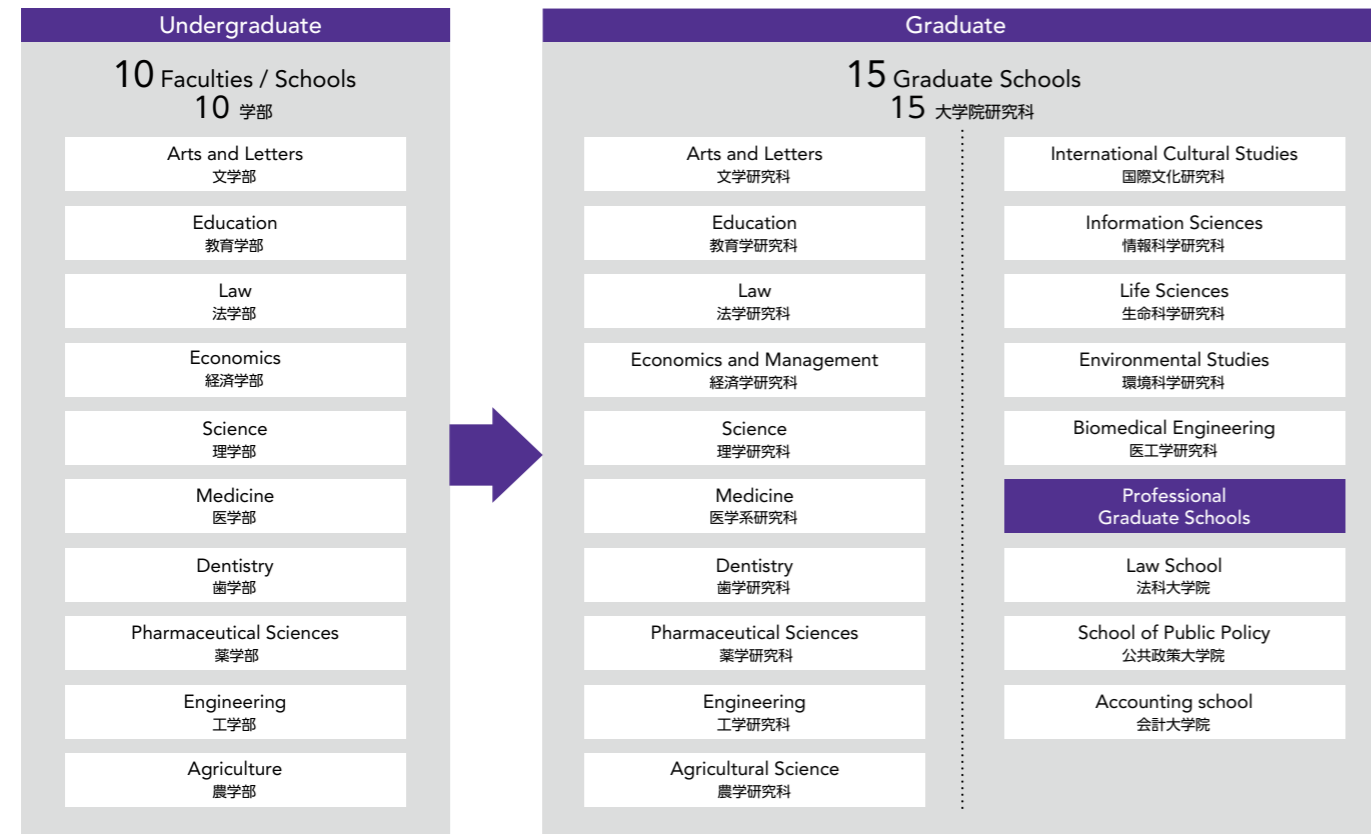
Study in Tohoku University

東北大学での学び

At Tohoku University, students are able to study and research in a wide range of fields.

Undergraduate programs cover 10 fundamental fields of specialization - 4 in the humanities and 6 in the sciences. Moreover, you will be able to further increase your specialization in 15 graduate schools in expanded fields, enabling you to pursue research in cutting-edge areas.

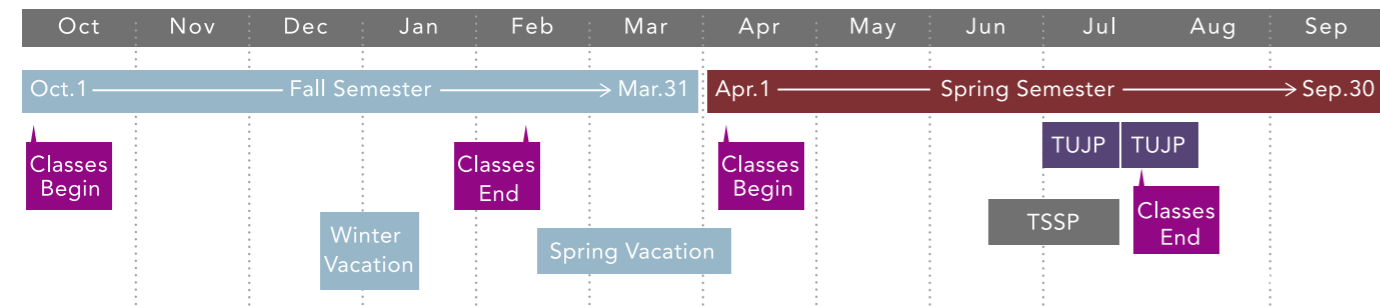
東北大学では、幅広い分野の教育・研究を行うことができます。文系4学部、理系6学部から構成される計10学部で各分野の専門基礎を学び、さらにその先の専門大学院を含む15の大学院で、より専門性の高い最先端の研究指導を受けることができます。



Academic Calendar

学年歴

Academic Calendar 2019/2020



Special Orientation for New International Students	October
Winter Vacation	December 27 – January 3
Semester End Vacation	Early February
Commencement	End of March / End of September
Entrance Ceremony	Early April
Special Orientation for New International Students	April
University Foundation Day	June 22
Semester End Vacation	Early August-September

Courses Taught in English (The Future Global Leadership Program)

Undergraduate

Course	Fields	Degree	Admission	Contact
AMC Advanced Molecular Chemistry Course	Chemistry, Science	BSc		E-mail: tohoku-fgl@grp.tohoku.ac.jp Web: http://www.web.tohoku.ac.jp/amc/
IMAC-U International Mechanical and Aerospace Engineering Course	Mechanical and Aerospace Engineering, Engineering	BEng	Oct.	E-mail: tohoku-fgl@grp.tohoku.ac.jp Web: http://g30.eng.tohoku.ac.jp/imac/
AMB Applied Marine Biology Course	Applied Biosciences, Agriculture	BAGri		E-mail: tohoku-fgl@grp.tohoku.ac.jp Web: http://www.agri.tohoku.ac.jp/amb/

Graduate

Course	Fields	Degree	Admission	Contact
IGPAS International Graduate Program for Advanced Science	Science	M/D	Oct.	E-mail: direct@mail.sci.tohoku.ac.jp Web: http://www.sci.tohoku.ac.jp/english/igpas/
IPHS International Post-Graduate Program in Human Security	Medicine, Agricultural Science, Environmental Studies	M/D	Apr. Oct.	E-mail: human_security@grp.tohoku.ac.jp (General inquiries) Web: http://www.human-security.tohoku.ac.jp
IELP International Environmental Leadership Program	Environmental Studies	M/D	Oct.	E-mail: kankyo.kyomu@grp.tohoku.ac.jp Web: http://kankyo.tohoku.ac.jp/ielp/index.html
IMAC-G International Mechanical and Aerospace Engineering Course - Graduate	Engineering	M/D		E-mail: imac-g@mech.tohoku.ac.jp Web: http://g30.eng.tohoku.ac.jp/imac/
IMSE International Materials Science and Engineering Course	Engineering	M	Oct.	E-mail: eng-in@grp.tohoku.ac.jp Web: http://g30.eng.tohoku.ac.jp/imse/
GPEM Global Program in Economics and Management	Economics and Management	M/D		E-mail: gpem@grp.tohoku.ac.jp Web: http://www.econ.tohoku.ac.jp/english/page-gpem.html
ITSC Information Technology and Science Course	Information Sciences	M	Apr.	E-mail: is-kyom@grp.tohoku.ac.jp Web: https://www.is.tohoku.ac.jp/index-e.html
IOHS Interface Oral Health Science Course	Dentistry	D	Apr. Oct.	E-mail: international@dent.tohoku.ac.jp Web: https://www.dent.tohoku.ac.jp/english/
ICLS International Course of Life Sciences	Life Sciences	M/D		E-mail: lif-kyom@grp.tohoku.ac.jp Web: https://www.lifesci.tohoku.ac.jp/en/curriculums/course/
IGPL International Graduate Program in Language Sciences	International Cultural Studies	M/D	Oct.	E-mail: int-kkdk@grp.tohoku.ac.jp Web: http://www.intcul.tohoku.ac.jp/ls/
NMC Network Medicine Course	Medicine	D	Apr. Oct.	E-mail: m-daigakuin@grp.tohoku.ac.jp Web: http://www.med.tohoku.ac.jp/english/index.html
BMC Basic Medicine Course	Medicine	M		
DSP II Data Sciences Program II	Information Science, Life Sciences, Economics and Management, Biomedical Engineering	M/D	Oct.	E-mail: ilo@is.tohoku.ac.jp Web: http://www.is.tohoku.ac.jp/_eng/dsp2/index.html
IRP (IMAC-G) International Robotics Program	Engineering, Information Sciences	M/D	Oct.	E-mail: eng-in@grp.tohoku.ac.jp Web: http://g30.eng.tohoku.ac.jp/imac
IBP (IMAC-G) International Biomechanics Program	Engineering, Information Sciences, Biomedical Engineering	M/D	Oct.	E-mail: eng-in@grp.tohoku.ac.jp Web: http://g30.eng.tohoku.ac.jp/imac
I-CEEC International Graduate Programs in Engineering International Civil and Environmental Engineering Course	Engineering	M/D	Oct.	E-mail: eng-in@grp.tohoku.ac.jp Web: https://www.eng.tohoku.ac.jp/english
G2SD Graduate Program in Global Governance and Sustainable Development	Social Science, Social Engineering, Environmental Studies, International Relations	M/D	Apr. Oct.	E-mail: int-kkdk@grp.tohoku.ac.jp Web: http://www.intcul.tohoku.ac.jp/g2sd/
IGSPS International Graduate School of Pharmaceutical Sciences	Pharmaceutical Sciences	D	Apr. Oct.	E-mail: kyoumu@mail.pharm.tohoku.ac.jp Web: http://www.pharm.tohoku.ac.jp/index-e.html

Undergraduate Programs (For Degree Seeking Students)

学部一覧

Classes for degree courses taught in Japanese, which you can take together with Japanese students, begin in April. Degree courses taught in English start in October. The courses taught in English are attended by international students from a variety of countries. The number of international coeducational classes open to all students is also being increased, allowing you to take classes taught in English alongside Japanese students and providing many chances for you to study the Japanese language.

日本人学生と一緒に日本語で授業を受ける学位コースは4月、英語のみの学位コースは10月から授業が始まります。英語コースは様々な国からの留学生が多く受講しています。日本人と一緒に学ぶ国際共修授業も増えているため、日本人と一緒に英語で授業を受けたり、日本語を学ぶ機会もたくさん用意されています。

Faculties / Schools	Department	Course in English (See p.12)	Language		Admission	
			JPN	ENG	APR	OCT
Arts and Letters 文学部	Humanities and Social Sciences 人文社会科学部		○		○	
Education 教育学部	Educational Science 教育科学部		○		○	
Law 法学部	Law 法学部		○		○	
Economics 経済学部	Economics 経済学		○		○	
	Business Administration 経営学		○		○	
Science 理学部	Mathematics 数学科		○		○	
	Physics 物理学		○		○	
	Astronomy and Geophysics 宇宙地球物理学		○		○	
	Chemistry 化学	AMC	○	○*	○	○*
	Geoenvironmental Science 地圏環境科学		○		○	
	Earth and Planetary Materials Science 地球惑星物質科学		○		○	
Medicine 医学部	Medical Sciences 医科学		○		○	
	Health Sciences 保健学		○		○	
Dentistry 歯学部	Dentistry 歯学		○		○	
Pharmaceutical Sciences 薬学部	Pharmaceutical Sciences 創薬科学		○		○	
	Pharmacy 薬学		○		○	
Engineering 工学部	Mechanical and Aerospace Engineering 機械知能・航空工学	IMAC-U	○	○*	○	○
	Electrical, Information and Physics Engineering 電気情報理工学		○		○	
	Applied Chemistry, Chemical Engineering and Biomolecular Engineering 化学・バイオ工学		○		○	
	Materials Science and Engineering 材料科学総合学		○		○	
Agriculture 農学部	Civil Engineering and Architecture 建築・社会環境工学		○		○	
	Applied Bio-Sciences 生物生産科学	AMB	○	○*	○	○*
	Applied Biological Chemistry 応用生物化学		○		○	

*= 英語による学位取得コースの在籍者のみ English course students only

Undergraduate Admission

学部生

Courses Taught in Japanese (Privately Financed International Students Entrance Exam)

If you wish to participate in programs taught in Japanese, you will enter in April. Please begin your preparations by undergoing the Examination for Japanese University Admission for International Students (EJU) in June or November of the previous year.

日本語で行われるコース (私費外国人留学生入試)

日本語で学位を取得する場合、入学時期は4月です。前年の6月または11月の日本留学試験の受験から準備を始めてください。詳細および2019年度に実施する入試の概要については、下記URLにて確認してください。
※<http://www.tnc.tohoku.ac.jp/>

1	出願前： 6月～	日本留学試験の受験 (6月または11月)	TOEFL iBTまたはTOEFL PBT の受験と送付の準備 (3月以降～毎月)	募集要項の請求	卒業・成績 証明書の準備	日本国内の 連絡先の確保	パスポートの準備
2	出願時： 1月上旬	出願書類等の提出		入学検定料の支払い		パスポートのコピー	
3	入試： 2月中旬						
4	合格発表後： 3月上旬～中旬	入学手続き 入学金の支払い			宿舎の決定		
5	入学式： 4月						

<問い合わせ先> 東北大学教育・学生支援部入試課 〒980-8576 仙台市青葉区川内28 Tel: 022-795-4804 E-mail : nyushi2@grp.tohoku.ac.jp

Courses Taught in English (The Future Global Leadership Program)

The Future Global Leadership(FGL) program offers three undergraduate courses taught entirely in English in the fields of Molecular Chemistry, Mechanical, Aerospace Engineering and Marine Biology. Please refer to our website to learn about the requirements before applying. The application guidelines will be updated in July. Further information is available here: <https://www.insc.tohoku.ac.jp/english/degree/undergraduate-english/>

Course	Fields	Contact
AMC	Advanced Molecular Chemistry Course	Chemistry, Science E-mail: tohoku-fgl@grp.tohoku.ac.jp Web: http://www.web.tohoku.ac.jp/amc/
IMAC-U	International Mechanical and Aerospace Engineering Course Undergraduate	Mechanical and Aerospace Engineering, Engineering E-mail: tohoku-fgl@grp.tohoku.ac.jp Web: http://g30.eng.tohoku.ac.jp/imac/
AMB	Applied Marine Biology Course	Applied Biosciences, Agriculture E-mail: tohoku-fgl@grp.tohoku.ac.jp Web: http://www.agri.tohoku.ac.jp/amb/

1. Application Requirements

1) Academic qualification exam or standardized national exam

You must submit scores for the required subjects from any one of the following.

A	IB, SAT Subject Tests or GCE (A-Level)	Required Subjects depend on the course.
B	National standardized examination. Applicable countries only.	Required Subjects depend on the course.
C	EJU	Required Subjects and Minimum scores for EJU depend on the course.

2) English Proficiency

You must fulfill any one of the following.

A	TOEFL iBT®TEST / TOEFL PBT®TEST / IELTS (Academic Module)	TOEFL iBT®TEST: 79 or higher / TOEFL PBT®TEST: 550 or higher / IELTS: 6.0 or higher
B	Submit a written certificate from your principal or counselor if you attended for four years or longer a middle / high school where the main language used was English. Applicable countries only.	

2. Documents to be submitted

- 1) Photograph
- 2) Statement of Reasons for Applying
- 3) Proof of Graduation / Certificate of Expected Graduation
- 4) Academic Transcript
- 5) Score of Academic or Standardized Examination
- 6) Score of English Proficiency Test
- 7) Proof of Nationality

3. Submit your Application

Complete the online application through the T-cens system on the FGL program's website.
https://applicant.insc.tohoku.ac.jp/t-cens_tohoku/login.php

Important Change to the 2020 Entrance Exam Schedule

From the 2020 admission, there will only be the 1st Application period. Please refer to the 2020 FGL Application Guide (to be released in July) for details of the application schedule.

<Inquiries>

Address: 41 Kawauchi, Aoba-ku, Sendai-shi 980-8576, Japan
Tel: +81-22-795-3242 E-mail: tohoku-fgl@grp.tohoku.ac.jp Official website: <https://www.insc.tohoku.ac.jp/english/degree/undergraduate-english/>

Graduate Schools (For Degree Seeking Students)

大学院一覧

Tohoku University offers degree courses, open to both international and Japanese students, taught in Japanese and/or English. It also has degree courses for international students taught entirely in English. Application qualifications, procedures and application period vary depending on each graduate school.

An outline follows, but applicants should refer to the Contact Information list (P.25) and contact their desired graduate school directly for detailed information.

日本人学生と一緒に日本語や英語で授業を受けて学位を取得する入試と、英語だけで学位を取得するコースがあります。いずれも各研究科の指導教員や担当係とコンタクトを取って、入学の方法を確認する必要があります。

詳細情報については、P25の連絡先一覧の各研究科の担当係に問い合わせてください。

Graduate Schools	Department/Major/ Division/School	Course in English (See p.12)	Language		Admission	
			JPN	ENG	APR	OCT
Arts and Letters 文学研究科	Japanese Studies 日本学		○		○	
	Global Humanities 広域文化学		○		○	
	Integrated Human Sciences 総合人間学		○		○	
Education 教育学研究科	Educational Science 総合教育科学		○		○	
Law 法学研究科	Law and Society (Professional Degree Program) 総合法制(専門職学位課程)		○		○	
	Public Law and Policy (Professional Degree Program) 公共法政策(専門職学位課程)		○		○	
	Legal and Political Studies 法政理論研究		○	○	○	○
Economics and Management 経済学研究科	Economics and Management 経済経営学	GPEM	○	○	○	○
	Accountancy (Professional Degree Program) 会計専門職(専門職学位課程)	DSP II	○		○	○
Science 理学研究科	Mathematics 数学	IGPAS	○	○	○	○
	Physics 物理学		○	○	○	○
	Astronomy 天文学		○	○	○	○
	Geophysics 地球物理学		○	○	○	○
	Chemistry 化学		○	○	○	○
	Earth Science 地学		○	○	○	○
Medicine 医学系研究科	Medical Sciences 医科学	IPHS BMC NMC	○	○	○	○
	Disability Sciences 障害科学		○	○	○	○
	Health Sciences 保健学		○	○	○	○
	Public Health 公衆衛生学		○	○	○	○
Dentistry 歯学研究科	Dental Sciences 歯科学	IOHS	○	○	○	○
Pharmaceutical Sciences 薬学研究科	Molecular Pharmaceutical Science 分子薬科学	IGSPS	○	○	○	○
	Life and Pharmaceutical Science 生命薬科学		○	○	○	○
	Pharmacy 医療薬学		○	○	○	○
Engineering 工学研究科	Mechanical Systems Engineering 機械機能創成	IMAC-G IMSE IRP IBP I-CEEC	○	○	○	○
	Finemechanics ファインメカニクス		○	○	○	○
	Robotics ロボティクス		○	○	○	○
	Aerospace Engineering 航空宇宙工学		○	○	○	○
	Quantum Science and Energy Engineering 量子エネルギー工学		○	○	○	○

Graduate Schools	Department/Major/ Division/School	Course in English (See p.12)	Language		Admission	
			JPN	ENG	APR	OCT
Engineering 工学研究科	Electrical Engineering 電気エネルギーシステム	IMAC-G IMSE IRP IBP I-CEEC	○	○	○	○
	Communications Engineering 通信工学		○	○	○	○
	Electronic Engineering 電子工学		○	○	○	○
	Applied Physics 応用物理学		○	○	○	○
	Applied Chemistry 応用化学		○	○	○	○
	Chemical Engineering 化学工学		○	○	○	○
	Biomolecular Engineering バイオ工学		○	○	○	○
	Metallurgy 金属フロンティア工学		○	○	○	○
	Materials Science 知能デバイス材料科学		○	○	○	○
	Materials Processing 材料システム工学		○	○	○	○
	Civil Engineering and Environmental Engineering 土木工学		○	○	○	○
	Architecture and Building Science 都市・建築学		○	○	○	○
Management Science and Technology 技術社会システム	○	○	○	○		
Agricultural Science 農学研究科	Biological Resource Science 資源生物科学	IPHS	○	○	○	○
	Life Sciences 応用生命科学		○	○	○	○
	Bioscience and Biotechnology for Future Bioindustries 生物産業創成科学		○	○	○	○
International Cultural Studies 国際文化研究科	International Cultural Studies 国際文化研究	IGPL G2SD	○	○	○	○
Information Sciences 情報科学研究科	Computer and Mathematical Sciences 情報基礎科学	ITSC DSP II	○	○	○	○
	System Information Sciences システム情報科学		○	○	○	○
	Human-Social Information Sciences 人間社会情報科学		○	○	○	○
	Applied Information Sciences 応用情報科学		○	○	○	○
Life Sciences 生命科学研究科	Integrative Life Sciences 脳生命統御科学	ICLS DSP II	○	○	○	○
	Ecological Developmental Adaptability Life Sciences 生態発生適応科学		○	○	○	○
	Molecular and Chemical Life Sciences 分子化学生物学		○	○	○	○
Environmental Studies 環境科学研究科	Environmental Studies for Advanced Society 先進社会環境学	IELP IPHS	○	○	○	○
	Frontier Sciences for Advanced Environment 先端環境創成学		○	○	○	○
Biomedical Engineering 医工学研究科	Biomedical Engineering 医工学		○	○	○	○

Graduate Admission

大学院正規課程

If you wish to enter graduate school, you should first look for a prospective academic advisor in your preferred field. Please see our website to help you decide what kind of research you want to perform at Tohoku University. The application process differs depending on the graduate school.

Graduate Degree Program (Degree seeking students)

1. Get consent of acceptance from a prospective supervisor. 受入内諾の取得

You should first find a prospective supervisor. Find faculty members in the field of your interest, contact them, and obtain consent of acceptance.

申請には、まず受入教員を見つける必要があります。希望する研究分野の教員をWEBで検索し、直接連絡のうえ受入許可を取得してください。

— To search by name, school, field, or keyword:

氏名、分野、キーワードから探す

[Academic Research Staff at Tohoku University](#)

[東北大学研究者紹介](#)

— To search by department and/or school:

研究科、専攻から探す

[Tohoku University > Academics > Graduate Schools](#)

— To search courses in English:

英語による学位取得コースから探す

[Tohoku University > Academics > Courses taught in English](#)

2. Check application eligibility/procedure. 出願資格・手続きの確認

The following items differ depending on the graduate school. Contact the academic affairs section, or office in charge of admission (See P.25 for contact information), directly or through your prospective supervisor for details.

— application eligibility, documents, and schedule

— entrance examination

— when and how to pay application fee

If you do not meet the requirement below you may need to take a preliminary screening. Confirm you are eligible to apply.

Master Course:

You have finished a total of 16 years of education from primary school to a 4-year university and earned, or expect to earn, a bachelor's degree.

Doctor Course:

You have earned, or are expected to earn, a master's degree.

大学院に入学を希望する場合は、まず自分が希望する研究分野や、専門分野の教員を探す必要があります。東北大学でどんなことを研究したいのか、WEBで調べてみてください。入学を希望するコースや教員によって入学の方法が異なります。



<http://db.tohoku.ac.jp/whois/>

出願に係る手続きは研究科により異なります。詳細は、直接又は受入教員を通して教務係(又はその他の入試担当者)に連絡し確認してください。

— 出願資格、時期、書類

— 入学試験の実施方法・時期

— 検定料の支払い時期・方法

以下の出願資格に当てはまらない場合は、出願資格の確認のため事前審査が必要になる場合があります。

博士前期(修士)課程への出願:

初等から高等まで計12年以上の教育(日本の小中高校に相当)を受け、大学の4年制の課程を卒業により学士号を取得又は取得見込みの者

博士後期課程への出願:

修士号を取得又は取得見込みの者

3. Submit application documents. 出願書類の提出

4. Take an exam. 受験

In some cases applicants for admission for courses taught in English can take the exam in English without coming to Japan. Contact the academic affairs section in other cases.

英語による学位取得コースにより入学しようとする場合は、試験は英語で実施され、来日が不要な場合もあります。その他の場合の試験方法等については研究科により異なります。

Non-degree Programs

非正規生

Research Students

Tohoku University also actively recruits short-term non-degree international students, i.e. research students. In general, research students receive guidance for their research under an academic advisor. Some students enter as research students to receive academic guidance before applying to a degree-conferring program.

How to apply

To become a research student, you should first find a professor to be your academic advisor, and contact him/her directly. (This is similar to the graduate school application procedure.) Once you have found an academic advisor, you should undergo application procedures for the relevant faculty/graduate school. You may apply to a wide range of departments at Tohoku University, including faculties, graduate schools, and research institutes. As a research student, you must pay the designated examination, admission, and tuition fees. The term of study for research students is no more than one year.

Special Auditing Students and Special Research Students

Exchange students will be admitted to Tohoku University as Special Auditing Students or Special Research Students as per exchange.

Special Visiting Trainees

This status is given to students who receive training at Tohoku University for more than 3 days but less than 90 days. Students from countries having a visa waiver agreement with Japan usually do not obtain a student visa/student residential status. Then are not "registered" students.

研究生

東北大学では、学位を取得しない短期の留学生も積極的に受け入れています。研究生として、指導教員の下に研究指導を受ける制度が一般的です。また、学位を取得する課程に入学する前に、指導を受けるために研究生となることがあります。

研究生になるには、大学院入試と同様に、はじめに指導を受ける教員を探し、直接教員に指導を依頼します。指導教員が決まったら、各学部・大学院などへ出願の手続きをとります。研究生は、東北大学の学部・大学院のほか、研究所などで広く受け入れられています。出願・入学には所定の検定料・入学料・授業料を払う必要があります。在学期間は1年以内です。

特別聴講学生・特別研究学生

本学が世界各国の高等教育機関と締結する大学間交流協定等に基づき在籍する交換留学生は、特別聴講学生又は特別研究学生として区分されます。

特別訪問研修生

3日以上90日未満の期間、東北大学で研修を行う場合の東北大学での身分です。通常、日本のビザ免除国では留学ビザ・留学の在留資格は取得しません。

Japanese Language Program at Kawauchi for International Students and Scholars

東北大学日本語教育プログラム(外国人留学生等特別課程)

The Japanese Language Program at Kawauchi for International Students and Scholars aims to improve the participants' Japanese comprehension, and academic skills, while helping them adjust to their new living environment. The program is organized by the Institute for Excellence in Higher Education (IEHE) and held on Kawauchi Kita Campus. Japanese levels are numbered 1 (beginner) through 6 (advanced). Students can select classes matching their levels on a range of subjects, such as comprehensive Japanese, reading, listening, writing, usage, kanji, etc. Students in level 4 (intermediate) or higher can participate in International Co-learning Seminars on a variety of topics together with Japanese students. Students in level 5 (upper intermediate) or higher can take seminars on Japanese culture.

外国人留学生、外国人研究者に対し、日本語の理解力、アカデミック・スキルの向上及び環境への適応を図ることを目的として、東北大学日本語教育プログラム(外国人留学生等特別課程)が開設されています。本課程は高度教養教育・学生支援機構により運営され、川内北キャンパスで実施されています。日本語のレベルは1(入門)から6(上級)まであります。日本語総合、読解、聴解、作文、応用、漢字、等それぞれのレベルと目的に合ったクラスを選んで受講することができます。また、レベル4(中級)以上では日本人学生と同じクラスで多様なトピックを学ぶ共修ゼミ、レベル5(中上級)以上では日本文化を学ぶ日本文化演習の授業も開講しています。

Programs for Partner Institutions

協定校在籍者対象のプログラム

Tohoku University has an extensive range of Student Exchange Programs with universities throughout the world, which are open to undergraduate and graduate students. You might also be able to have your Tohoku University course work credited towards your degree back home.

東北大学では世界各国の学術協定校からの交換留学や、サマープログラム等、様々な期間のプログラムを用意しています。また、学部生や大学院生に対して広く門戸を開いていることも特徴です。

Exchange Programs

- Junior Year Program in English (JYPE)
- International Program in Liberal Arts (IPLA)
- Cooperative Laboratory Study Program (COLABS)
- Direct Enrollment Education Program for Humanity / Social science students (DEEP-Bridge)
- Direct Enrollment Education Program for Natural science students (DEEP)

Program	Duration	Language		Eligibility		Outline	Requirement (per semester)
		JPN	EN	U	G		
JYPE	2 semesters (F+S) 1 semester (F)		○	○	*1	<ul style="list-style-type: none"> • Lectures on Science, Engineering and Agricultural Science • Japanese language and culture courses • Research in a laboratory • Research presentation 	13 TU credits or more
IPLA	2 semesters (F+S) 1 semester (F)		○	○	*2	<ul style="list-style-type: none"> • Lectures on Liberal Arts • Japanese language and culture courses • Activities with Japanese students • Final presentation 	13 TU credits or more
COLABS	2 semesters (F+S, S+F) 1 semester (F or S)		○	○		<ul style="list-style-type: none"> • Research in a laboratory • Research presentation 	30 ECTS equivalent credits(*3) or more in research
DEEP-Bridge	2 semesters (F+S) 1 semester (F or S)	○	○	○	*4	<ul style="list-style-type: none"> • Japanese language classes and regular courses taught in Japanese 	13 TU credits or more
					*5	<ul style="list-style-type: none"> • Research in a laboratory 	Research Report
DEEP	2 semesters (F+S, S+F) 1 semester (F or S)	○		○	*6	<ul style="list-style-type: none"> • Auditing classes 	13 TU credits or more
					*6	<ul style="list-style-type: none"> • Research in a laboratory 	30 ECTS equivalent credits(*3) or more in research

- *1: 3rd or 4th year only
 *2: 2nd or 3rd year only
 *3: 750 school hours
 *4: Japanese proficiency (TTBJ/SPOT 65 or higher)
 *5: TTBJ/SPOT 85 or higher
 *6: Japanese proficiency (JLPT N1 recommended) required to take classes taught in Japanese.

F=Fall (Oct.-Feb.) S=Spring (Apr.-Aug.)
 U= Undergraduate G=Graduate
 TU=Tohoku University

Financial Aid

Since these programs are based on exchange agreements between Tohoku University and the students' home institutions, tuition fees are waived for exchange students. Although the students themselves should basically bear the cost of living, they are eligible to apply for the JASSO Student Exchange Support Program (Scholarship for Short-term Study in Japan), which provides an allowance of 80,000 yen/month for the duration of study. Applicants will be asked to indicate their interest at the time of application.

For more information: <https://www.insc.tohoku.ac.jp/english/exchange/>

Summer Programs

- Tohoku University Japanese Program (TUJP)
- Tohoku University STEM Summer Program (TSSP)

Program	Duration	Language		Eligibility		Outline	Credits Awarded
		JPN	EN	U	G		
TUJP	2 weeks Session I: Jul.1 – Jul.16, 2019 Session II: Jul.22 – Aug.6, 2019	○	○	○		Lectures on Japanese Language, culture, and society	4 ECTS equivalent credits
TSSP	4 weeks Jun.17 – Jul.12, 2019		○	○		Lectures on Science and Engineering	8 ECTS equivalent credits

This schedule is for 2019. Please see the website for the latest information: <https://www.insc.tohoku.ac.jp/english/short/>

Double Degree Program & Joint Education Program

The Double Degree Program is based on a memorandum of understanding between Tohoku University and its partner schools. Under this program, students can undergo research guidance at and receive Master's degrees from both universities. Under the Joint Education Program, inbound students receive a Master's degree from Tohoku University and a Doctor's degree from Tsinghua University. Outbound students receive Master's degrees from both Universities.

Program	Double Degree Program	Joint Education Program
Fields	Science, Engineering, Agricultural Science, Information Sciences, Environmental Studies	Materials Science and Engineering, Physics, Mechanical Engineering, Precision Instruments
Eligibility	Master students	
Partner universities	Ecole Centrale Group (France) INSA de Lyon (France) KTH Royal Institute of Technology (Sweden)	Tsinghua University (China)
Duration	2 to 2.5 years	1.5 years
Language	English and /or Japanese	English

International Joint Graduate Programs

Collaborating with leading universities abroad, International Joint Graduate Programs enhance the students' competitive edge in fields where Tohoku University has strengths. Supervised by both home and host universities, students receive a degree from their home university, along with a certificate of joint-supervision. <http://ijg.pgd.tohoku.ac.jp/>

Programs	Contact
Spintronics	Graduate School of Science
Materials Science	Graduate School of Engineering
Physics for the Universe	Graduate School of Science
Earth and Environmental Sciences	Graduate School of Science
Integration of Mechanical Systems	Graduate School of Engineering
Data Science	Graduate School of Information Sciences
Neuro Global	Graduate School of Life Sciences
Resilience and Safety Studies	Graduate School of Environmental Studies
Japanese Studies	Graduate School of Arts and Letters

Fees and Expenses 費用

Tohoku University's application, admission, and tuition fees are shown in the table below.

		(in Japanese yen)		
		Application Fee / 検定料	Admission Fee / 入学料	Tuition / 授業料
Degree Students 正規生	Undergraduate Students / 学部生	17,000	282,000	535,800 (per year)
	Graduate Students / 大学院生	30,000		
	Law School Students / 法科大学院生	30,000	282,000	804,000 (per year)
	Accounting School Students / 会計大学院生	30,000	282,000	589,300 (per year)
Non-degree Students 非正規生	Research Students / 研究生	9,800	84,600	29,700 (per month)
	Special Research Students / 特別研究学生	-	-	29,700 (per month)
	Credited Auditors / 科目等履修生	9,800	28,200	14,800 (per credit)
	Special Auditing Students / 特別聴講学生	-	-	14,800 (per credit)

※ 検定料、入学料、授業料は変更になることがあります。Above fees are subject to change.

※ 再入学・転入学及び編入学の場合、30,000円。 30,000 yen in case of re-admission, transference, transfer admission.

Fee Waivers 入学料・授業料免除

Degree students who find it difficult to pay the admission fee and/or tuition for economic reasons may be granted a waiver on application and screening.

* Non-degree students are not eligible for the waivers.

正規課程在籍(予定)者が、経済的事由等により、入学料及び授業料の納付が困難である場合に、申請により選考の上、免除が許可される場合があります。授業料免除の申請は、毎学期審査が必要です。
*非正規生は、免除の対象ではありません。

	Full	Half	1/3	Application Period	Result Notification
Admission Fee	○	○	—		
Tuition: Spring Semester	○	○	○	February - March	Mid-July
Tuition: Fall Semester	○	○	○	August - September	Mid-December

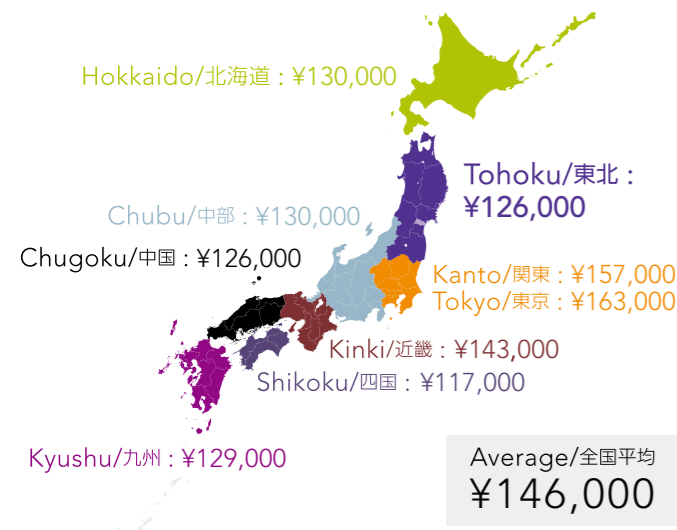
Living Expenses 生活費

The cost of rent and living is cheaper compared to other major Japanese cities. Monthly living expenses are around 120,000 yen, which is relatively low for Japan, making it a very livable city.

仙台での生活費の目安は月額12万円と全国平均よりも安く、暮らしやすい都市と言えます。

Average Monthly Living Cost by Region

地域別平均生活費/月



Approximate Monthly Living Expenses for Students

一般的な学生の1ヵ月の生活費(目安)

Rent 家賃	Student Dormitory: 10,000 yen to 30,000 yen/month Private Accommodations: 35,000 yen to 60,000 yen/month 学生寮: 約1-3万円/月 アパート: 約3.5-6万円/月
Utilities 水道光熱費	Electricity, gas, water etc: Approx. 10,000 yen/month 電気・ガス・水道など: 約1万円/月
Landline Phone 電話代	2,000 yen/month + usage fees 基本料金約2,000円 + 通話料/月
Food 食費	40,000 yen to 50,000 yen/month 4-5万円/月

Source: Lifestyle Survey of Privately Financed International Students 2017, Japan Student Services Organization (JASSO)
出典: JASSO平成29年度私費外国人留学生生活実態調査

Housing 住居・寮

International students are provided housing in dormitories, such as the Tohoku University International House and University House.

Tohoku University provides international students with various types of housing support to help them find suitable housing relatively easily.

Housing costs vary depending on location and other conditions.

東北大学では、留学生に対してさまざまなハウジングサポートを行っていますので、自分に合った宿舎を安心して探すことができます。住居費は、地域差その他の条件により異なりますが、およそ次のとおりです。

		Eligibility		Rent* per month	Maintenance Fee per month	Deposit	Duration			
Room Type		Undergrad	Grad							
International House										
Sanjo I	Single	○	○	13,000	1,000	30,000	6-12 months			
	Couple	○	○	21,000						
	Family	○	○	25,000						
Sanjo II	Single	○	○	22,800						
	Couple	○	○	32,000						
	Family	○	○	50,000						
Higashi Sendai	Single	○	○	10,000						
	Single	○	○	22,000						
	Couple	○	○	33,000						
University House										
Sanjo	Single A	○		21,600				2,500	30,000	6-12 months
	Single B		○	22,000				3,100		
Sanjo II	Single	○	○	22,000	2,500					
Sanjo III	Single	○	○	22,000	1,500					
Nagamachi	Single	○	○	22,000	1,500					
Katahira	Single		○	25,000	1,000					
Aobayama	Single	○	○	28,000	1,500	6-24 months				

*水道光熱費は含まれません。Utilities such as electricity, water, and gas are not included.

Private apartment

		(in Japanese yen)			
		Rent per month	Maintenance Fee	Utilities	Deposit/Key money
Private apartment	Single Approx. 35,000-60,000	★	★	★	★

*物件によりさまざまです。契約手数料・仲介料がかかる場合もあります。Fees vary depending on the apartment. The real estate agent might charge handling or mediation fees.

Tutor System チューター制度

Newly enrolled international students are provided tutors, recruited from the Tohoku University student body, to advise them on their studies and daily lives and help them adjust to their new environment as quickly as possible.

入学当初の留学生に対して、東北大学の学生がチューターとなり、学習上のことや、日常生活上の助言を行い、1日も早く新しい環境に慣れるための制度です。

Financial Aid

奨学金

A variety of scholarship opportunities are offered to international students at Tohoku university. Most scholarships accept applications from students already enrolled.

外国人留学生を対象とした多様な奨学金制度があります。入学後の申請が一般的です。

Japanese Government (MEXT) Scholarship

<http://www.studyjapan.go.jp/en/toj/toj0302e.html>

There are two ways to apply for the Japanese Government (Ministry of Education, Culture, Sports, Science and Technology; MEXT) Scholarship. Once selected, awardees benefit from fee waivers and a monthly stipend*1 until the stipulated period*2.

- *1. 147,000 yen for doctoral students at Tohoku University (as of the year 2018)
- *2. Years usually required to complete the program (e.g. 2 years for master course)

日本政府(文部科学省)奨学金

国費外国人留学生(文部科学省奨学金)へは、次の2つの応募方法があります。採用者は、標準修了年限*2まで授業料等免除及び奨学金の給付*1を受けることができます。

- *1. 博士後期課程147,000円/月(2018年度現在) 他在籍課程等により異なる。
- *2. 課程を修了するのに通常必要とされる年数 (例; 博士前期課程の場合、入学から2年間)

Applying from outside of Japan before Admission

1. Embassy Recommendation

You apply for a scholarship through an embassy or consulate general of Japan in your country or region of residence, take a primary screening, and then choose the universities you wish to enter. Admission can be in April or October.

2. University Recommendation

You apply for the scholarship through Tohoku University as a prospective applicant for admission. Admission under this scheme is only in October.

海外から応募する場合

1. 大使館推薦

居住する国・地域の公館へ申請し、一次審査通過後に入学する大学を選択します。入学前に半年間の日本語課程を受けるのが一般的です。入学時期は4月と10月から選べます。

2. 大学推薦

出願予定者として、東北大学を通じて申請します。入学時期は10月です。

Monbukagakusho Honors Scholarship

http://www.jasso.go.jp/en/study_j/scholarships/index.html

Self-financed international students can apply for the Monbukagakusho Honors Scholarship offered by the Japanese Student Services Organization (JASSO) through Tohoku University. Once selected, awardees benefit from monthly stipends (48,000 yen) for up to 12 months.

文部科学省外国人留学生学習奨励費(留学生受け入れ促進プログラム)

私費外国人留学生が東北大学を通じて申請し、採用されると(独)日本学生支援機構(JASSO)から、最長12ヶ月間奨学金(48,000円/月)が給付されます。

Tohoku University President Fellowship

This scholarship system is unique to Tohoku University. It provides an amount covering tuition fees for international students of excellent character and academic standing. For application information, students should inquire with their desired faculty or graduate school.

東北大学外国人留学生総長特別奨学生

東北大学独自の奨学生制度で、人物、学業ともに優れた外国人留学生に対し、授業料相当額を支給します。

Other Scholarships

http://www.jasso.go.jp/en/study_j/scholarships/index.html

Some private foundations or other organizations in Japan offer scholarships for international students. These scholarships vary with regards to recruitment procedures, eligible fields of study and amount.

その他の奨学金

民間財団等の奨学金制度は、募集、対象者・分野、金額、期間等はそれぞれ異なるため、個別に確認が必要です。

Student Organizations

学生による留学生の支援団体

International support organizations are active at Tohoku University, so there are numerous international exchange activities on campus. International students can deepen their interaction with Japanese students through various international exchange events held at the university.

学生による国際交流

東北大学では、留学生を支援する団体が活発に活動し、キャンパスでの国際交流もさかんです。学内で開催される様々な国際交流行事を通じて、日本人学生と交流を深めることができます。

TUFSA (Tohoku University Foreign Students Association)

This is the main organization for international students at Tohoku University, consisting of students from Asia, Europe and South/North America. It has a long history, having been founded in 1965. Shortly, it will celebrate its 50th anniversary. This organization also holds a long-running international festival each year. This event, which attracts over 3,000 visitors every year, is one of the Tohoku area's largest international events. It also holds exchange trips, welcome parties, dances and sports competitions.

40年以上の歴史ある国際まつりを毎年主催。毎年3,000人以上が来客するお祭りは、東北地方で最も大きな国際イベントの一つです。交流旅行、歓迎会パーティ、ダンスパーティ、スポーツ大会なども開催しています。

<http://www.tufsa.net/>



TUMCA (Tohoku University Muslim Cultural Association)

This association promotes cultural exchange and friendship with Japanese people. It participates in the Tohoku University International Festival and Sendai World Festa every year. It also enables international exchange by holding a cooking class each month.

文化交流や日本人との交友関係を促進しています。東北大学国際祭りや仙台地球フェスタに毎年参加。国際交流ができる料理教室を毎月開催しています。

<https://www.facebook.com/TUMCA>



IPLANET

This organization supports exchange students in the International Program in Liberal Arts (IPLA). They plan special events such as cooking classes, cultural experiences, and welcome and farewell parties. They also organize the Global Café, in which IPLA students teach their native languages and cultures. Many members assist IPLA students as tutors in various matters from study to daily life.

人文・社会科学短期留学生受入プログラム(IPLA)の学生を支援しています。料理教室、日本文化体験、歓迎会やお別れ会といったイベントの企画から、グローバル・カフェの運営や学習や生活を援助するチューターなども行っています。

<https://www.facebook.com/iplanet.tohoku/>



@home

This organization is operated by Japanese students and conducts exchange activities between Japanese and international students. It cooperates with the International Hour exchange parties for international and Japanese students and in helping international students start their lives in Sendai while participating in planning activities.

日本人学生が運営する団体で、留学生と日本人学生が交流できるような活動を行っています。留学生と日本人の交流パーティ「IH」や留学生の仙台での生活スタートをお手伝いするなど協力し合いながら企画をしています。

<https://www.insc.tohoku.ac.jp/~athome/>



Contact Information

連絡先一覧

Faculty, Research Institute, etc.	E-mail	Phone	Campus
Student Exchange Division	Inbound Exchange Program	studyab@grp.tohoku.ac.jp	Kawauchi
	FGL Programs	tohoku-fgl@grp.tohoku.ac.jp	Kawauchi
	International Support Office	supportoffice@grp.tohoku.ac.jp	Kawauchi
Faculty of Arts and Letters	art-kyom@grp.tohoku.ac.jp	+81-22-795-6005	Kawauchi
Faculty of Education	sed-kyomu@grp.tohoku.ac.jp	+81-22-795-6105	Kawauchi
School of Law	law-kyom@grp.tohoku.ac.jp	+81-22-795-6249 (FAX)	Kawauchi
Faculty of Economics	eco-kyom@grp.tohoku.ac.jp	+81-22-795-6265	Kawauchi
Faculty of Science	sci-kyom@grp.tohoku.ac.jp	+81-22-795-5829	Aobayama
School of Medicine	Medical Sciences	med-kyom@grp.tohoku.ac.jp	Seiryō
	Health Sciences	cms-kyom@grp.tohoku.ac.jp	Seiryō
School of Dentistry	den-kyom@grp.tohoku.ac.jp	+81-22-717-8248	Seiryō
Faculty of Pharmaceutical Sciences	kyoumu@mail.pharm.tohoku.ac.jp	+81-22-795-6803	Aobayama
School of Engineering	eng-kyom@grp.tohoku.ac.jp	+81-22-795-5818	Aobayama
Faculty of Agriculture	agr-kyom@grp.tohoku.ac.jp	+81-22-757-4007	Aobayama
Graduate School of Arts and Letters	art-kyom@grp.tohoku.ac.jp	+81-22-795-6005	Kawauchi
Graduate School of Education	sed-kyomu@grp.tohoku.ac.jp	+81-22-795-6105	Kawauchi
Graduate School of Law	law-kyom@grp.tohoku.ac.jp	+81-22-795-6249 (FAX)	Kawauchi
Graduate School of Economics and Management	eco-kyom@grp.tohoku.ac.jp	+81-22-795-6265	Kawauchi
Graduate School of Science	sci-in@grp.tohoku.ac.jp	+81-22-795-5829	Aobayama
Graduate School of Medicine	m-daigakuin@grp.tohoku.ac.jp	+81-22-717-8010	Seiryō
Graduate School of Dentistry	international@dent.tohoku.ac.jp	+81-22-717-8248	Seiryō
Graduate School of Pharmaceutical Sciences	kyoumu@mail.pharm.tohoku.ac.jp	+81-22-795-6803	Aobayama
Graduate School of Engineering	eng-in@grp.tohoku.ac.jp	+81-22-795-5820	Aobayama
Graduate School of Agricultural Science	agr-kyom@grp.tohoku.ac.jp	+81-22-757-4007	Aobayama
Graduate School of International Cultural Studies	int-kkdk@grp.tohoku.ac.jp	+81-22-795-7556	Kawauchi
Graduate School of Information Sciences	is-kyom@grp.tohoku.ac.jp	+81-22-795-5814	Aobayama
Graduate School of Life Sciences	lif-kyom@grp.tohoku.ac.jp	+81-22-217-5706	Katahira
Graduate School of Environmental Studies	kankyō.kyomu@grp.tohoku.ac.jp	+81-22-752-2235	Aobayama
Graduate School of Biomedical Engineering	bme-kyom@grp.tohoku.ac.jp	+81-22-795-4824	Aobayama
Law School	law-pro@grp.tohoku.ac.jp	+81-22-217-4947 (FAX)	Katahira
School of Public Policy	law-pro@grp.tohoku.ac.jp	+81-22-217-4947 (FAX)	Katahira
Accounting School	as-jimu@grp.tohoku.ac.jp	+81-22-217-6276	Katahira
Institute for Materials Research (IMR)	imr-som@imr.tohoku.ac.jp	+81-22-215-2181	Katahira
Institute of Development, Aging and Cancer	ida-som@grp.tohoku.ac.jp	+81-22-717-8443	Seiryō
Institute of Fluid Science	shomu@ifs.tohoku.ac.jp	+81-22-217-5302	Katahira
Research Institute of Electrical Communication	somu@riec.tohoku.ac.jp	+81-22-217-5420	Katahira
Institute of Multidisciplinary Research for Advanced Materials	tagen-kenkyo@grp.tohoku.ac.jp	+81-22-217-5208	Katahira
International Research Institute of Disaster Science	irides-syomu@grp.tohoku.ac.jp	+81-22-752-2011	Aobayama
Cyclotron and Radioisotope Center	cyric-jim@grp.tohoku.ac.jp	+81-22-795-7800	Aobayama
Advanced Institute for Materials Research	aimr-soumu@grp.tohoku.ac.jp	+81-22-217-5922	Katahira
Admission Division (Undergraduate Program in Japanese)	nyushi2@grp.tohoku.ac.jp	+81-22-795-4804	Kawauchi

Campuses

キャンパス

Located on four campuses in the city of Sendai, the university is comprised of 10 undergraduate faculties, 15 graduate schools, 6 research institutes, 14 research centers and the University Hospital.

東北大学には、仙台市内に4つのキャンパスがあります。10学部、15研究科、6附置研究所、14研究センター等、及び大学病院から成り立っています。

