

ATTN: Japanese Language Program at Kawauchi Students

- A Tohoku-dai ID is necessary to take Japanese Language Program classes.
If you have not received your ID, please contact your department.
- Please carefully read the Guide on the pages below before applying for a Nihongo ID.
- You must log in to the campus network to apply for a Nihongo ID.
(Please remember to enable the VPN service in your device settings.)
You can apply for the Nihongo ID from overseas.

Campus wi-fi

<https://www.dc.tohoku.ac.jp/guide/wifi/wifi-e.html>

VPN service

<https://www.tains.tohoku.ac.jp/contents/remote/vpnstudent.html>

- Access the following URL from the campus network to log in to the academic affairs system and apply for a Nihongo ID.
<https://jlpk.bureau.tohoku.ac.jp/entry/>
- Both online and in-person classes for the Japanese Language Program at Kawauchi use Google Classroom. When attending in-person classes, please comply with Tohoku University's Emergency Action Plan (BCP).
- Check the Google Classroom codes of the classes you want to take on the Japanese Language Program website and join the Classroom.
<https://www.jlpk.ihe.tohoku.ac.jp/files/JLPK/classroomcode.pdf>



- We will answer your inquiries by email.
If you inquire after 16:00 (JST) or on a holiday, we will respond on the next business day. Depending on the content of the inquiry, it may take us a while to answer. Thank you for your patience.
(We cannot answer inquiries about the Tohoku-dai ID or campus network.)
- Please read the Enrollment Guide, which will be updated as needed, on the Japanese Language Program website.

Japanese Language Program website

<https://www.jlpk.ihe.tohoku.ac.jp/program/>

Tohoku University Online Class Guide

<https://sites.google.com/view/teleclass-tohoku/forstudents>

Institute for Excellence in Higher Education
Tohoku University

A Guide to the Tohoku University Japanese Language Program at Kawauchi (Updated March 26, 2025)

First Term, AY 2025 Tohoku University Institute for Excellence in Higher Education

The Institute for Excellence in Higher Education offers the Japanese Language Program for International Students to improve the Japanese language proficiency of foreign students and researchers at Tohoku University. We hope that it will facilitate your everyday activities and research. There are a variety of classes, from beginner to advanced levels, so you can study at the Japanese level appropriate for you. The first semester begins in April and the second semester begins in October.

Table of Contents

| | |
|--|----|
| 1. Nihongo ID Application/Class Registration | 1 |
| 2. Notes on Attending Class | 4 |
| 3. Orientation video | 5 |
| 4. Level and Subject Codes | 6 |
| 5. Grading and Progression System | 7 |
| 6. Eligibility for Classes | 9 |
| 7. Subjects and Timetable by level | 10 |
| Level 1 (Beginning) | 10 |
| Level 2 (Basic) | 11 |
| Level 3 (Pre-Intermediate) | 12 |
| Level 4 (Intermediate) | 13 |
| Level 5 (Upper-Intermediate) | 14 |
| Level 6 (Advanced) | 15 |
| Level 0~6 Intercultural Collaborative Learning List..... | 16 |
| 8. Class Schedule by level..... | 17 |
| 9. Contact Information | 20 |
| 10. Kawauchi Campus Map | 21 |
| 11. Classroom Locations | 22 |

Both online and in-person classes for the Japanese Language Program at Kawauchi use Google Classroom.

Program Term

April 8(Tue.) to August 5(Tue.)

Nihongo ID Application/Class Registration Schedule

BE SURE TO REGISTER DURING THE REGISTRATION PERIOD!

First Semester: April 8 (Tue.) through August 5 (Tue.)

Nihongo ID Application Period: March 24 (Mon.) – April 21 (Mon.)

Class Registration Period: April 17 (Thu.) - May 7 (Wed.)

2th Quarter: June 4 (Wed.) through August 5 (Tue.)

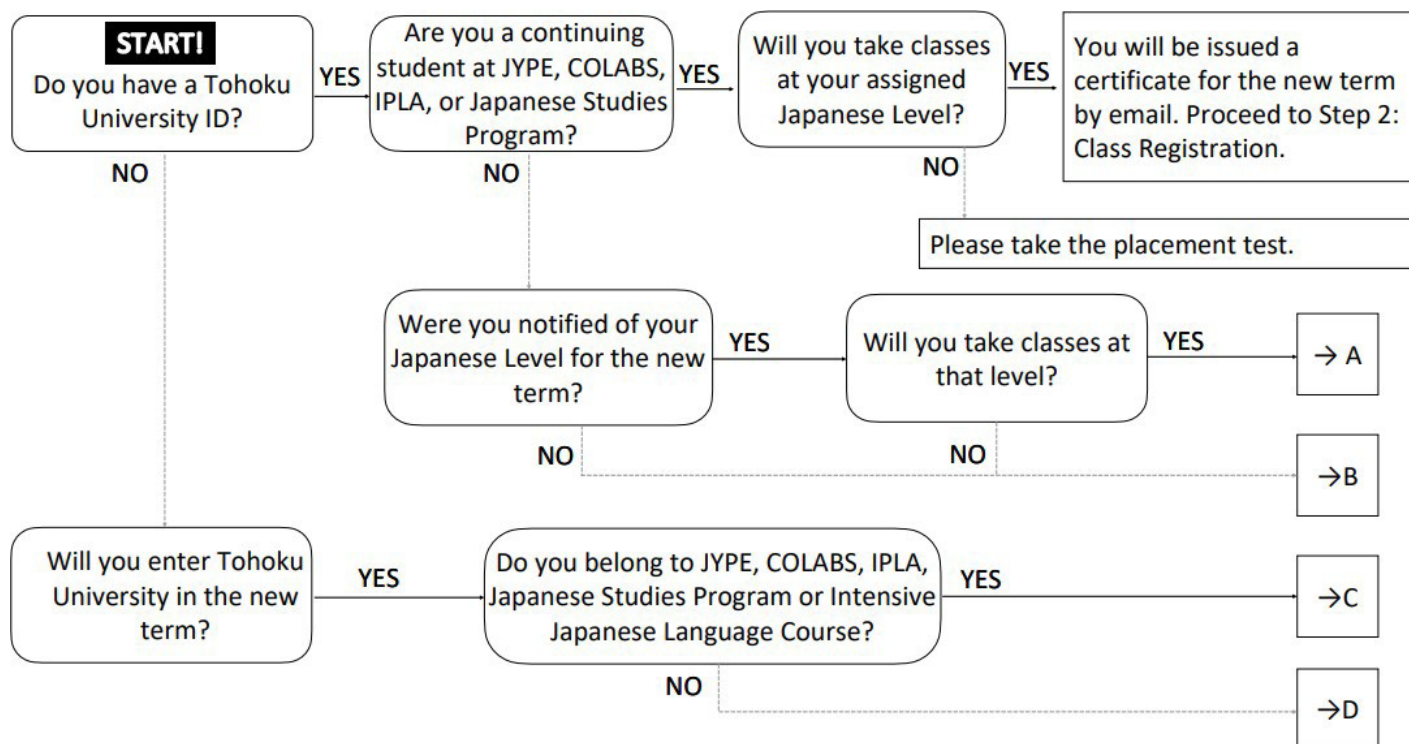
(Courses in the latter half of the term)

Nihongo ID Application Period: May 29 (Thu.) – June 4 (Wed.)

Class Registration Period: June 2 (Mon.) – June 13 (Fri.)

- ※ Deadlines for dropping classes are as follows.
- Term-long Classes: May 30 (Fri.)
- Half-term Classes (first part of the term): May 9 (Fri.)
- Half-term Classes (second part of the term): June 30 (Mon.)

1. Nihongo ID Application/Class Registration



※ You require a Nihongo ID and certificate for the current term to take classes. You cannot use your Nihongo ID from the previous term.

Step 1: Nihongo ID application

March 24 (Mon.) - April 21 (Mon.)

(Courses in the latter half of the term: May 29 (Thu.) – June 4 (Wed.))

PT=Placement test

*It may take a few days to issue the Japanese language program ID and level certificate.
Please acquire them well before the deadline.

A (enrolled at TU, have an assigned Japanese level, will not take the PT):

(1) Log in to the academic affairs system from the on-campus network to apply for a Nihongo ID.

URL: <https://jlpk.bureau.tohoku.ac.jp/entry/>

*Please be sure to register your Nihongo ID from the previous term and password with the system.

(2) You will receive a Nihongo ID and Excel file by email. The Excel file is for those who are taking the placement test, so you need not submit it.

(3) Later, you will be sent a certificate showing your Japanese level for the new term.

(4) After the term starts, please perform Step 2.

B-1 (enrolled at TU, beginner, will not take the PT):

(1) Log in to the academic affairs system from the on-campus network to apply for a Nihongo ID.

URL: <https://jlpk.bureau.tohoku.ac.jp/entry/>

*Please be sure to choose “beginner” at the question 12 on the system.

(2) You will receive a Nihongo ID by email. Please complete the preparatory assignment on the website below before the start of classes.

URL: <https://www.jlpk.ihe.tohoku.ac.jp/kana/>

(3) Later, you will receive a Level 1 (beginner) certificate by email.

(4) After the term starts, please perform Step 2.

B-2 (enrolled at TU, studied Japanese before, will take the PT):

(1) Log in to the academic affairs system from the on-campus network to apply for a Nihongo ID.

URL: <https://jlpk.bureau.tohoku.ac.jp/entry/>

* If you have a Nihongo ID and password from the previous term, please be sure to register them with the system.

(2) You will receive a Nihongo ID and Excel file by email. You will also be provided a link to information on the placement test.

(3) Take the online placement test.

(4) Enter your test results in the Excel file and send it within 3 days after applying for a Nihongo ID to the provided email address.

(5) You will be sent a certificate showing your Japanese level. If you were notified of a level for the new term, but also have a level determined by your test result, your level will be whichever is higher.

(6) After the term starts, please perform Step 2.

C-1 (not yet enrolled at TU, beginner, participating in the above programs, will not take the PT):

(1) You will receive a Nihongo ID by email. Please complete the preparatory assignment on the website below before the start of classes.

URL: <https://www.jlpk.ihe.tohoku.ac.jp/kana/>

(2) Later, you will receive a Level 1 (beginner) certificate by email.

(3) After entering TU, please perform Step 2.

C-2 (not yet enrolled at TU, studied Japanese before, participating in the above programs, will take the PT):

- (1) You will receive a Nihongo ID and Excel file by email. You will also be provided a link to information on the placement test.
- (2) Take the online placement test.
- (3) Enter your test results in the Excel file and send it within 3 days after applying for a Nihongo ID to the provided email address.
- (4) You will be sent a certificate showing your Japanese level.
- (5) After entering TU, please perform Step 2.

D-1 (not yet enrolled at TU, beginner, general, will not take the PT):

- (1) After entering TU, log in to the academic affairs system from the on-campus network to apply for a Nihongo ID.
URL: <https://jlpk.bureau.tohoku.ac.jp/entry/>
*Please be sure to choose “beginner” at the question 12 on the system.
- (2) You will receive a Nihongo ID by email. Please complete the preparatory assignment on the website below before the start of classes.
URL: <https://www.jlpk.ihe.tohoku.ac.jp/kana/>
- (3) Later, you will receive a Level 1 (beginner) certificate by email.
- (4) Please perform Step 2.

D-2 (not yet enrolled at TU, studied Japanese before, general, will take the PT):

- (1) After entering TU, log in to the academic affairs system from the on-campus network to apply for a Nihongo ID.
URL: <https://jlpk.bureau.tohoku.ac.jp/entry/>
- (2) You will receive a Nihongo ID and Excel file by email. You will also be provided a link to information on the placement test.
- (3) Take the online placement test.
- (4) Enter your test results in the Excel file and send it within 3 days after applying for a Nihongo ID to the provided email address.
- (5) You will be sent a certificate showing your Japanese level.
- (6) Please perform Step 2.

Attending Classes

April 8 (Tue.) –
(Courses in the latter half of the term: June 4 (Wed.) –)

- (1) Please look at the timetable and syllabus for your level and choose the classes you will take.

URL: <https://www.jlpk.ihe.tohoku.ac.jp/syllabi/>

Please check the class code on the HP and register for Google Classroom.

URL: <https://www.jlpk.ihe.tohoku.ac.jp/files/JLPK/classroomcode.pdf>

- (2) Please join classes suitable for your level. Please show your certificate and ask for the instructor's permission.

*Class sizes are limited. Students will be accepted on a first-come basis.

*Some classes preferentially accept students from certain programs.

*If you decide not to take a class, please contact your instructor immediately and withdraw from Google Classroom.

Step 2: Class Registration

April 17 (Thu.) - May 7 (Wed.)

(Courses in the latter half of the term: June 2 (Mon.) – June 13 (Fri.))

Log in to the academic affairs system and register your classes using the class registration screen.

Academic affairs system : <https://jlpk.bureau.tohoku.ac.jp/student/login.php>

※ You will only be able to register only classes for which you have received permission from the instructors.

※ IPLA students will be informed about registration in a separate email. Do NOT register with the above system.

*Courses in the latter half of the term

| | JLP course code |
|------------------------------|-------------------------------|
| Level 1 (Beginner) | M100 |
| Level 2 (Basic) | C250b/c, A250b/c |
| Level 3 (Pre-intermediate) | A350, C350-R/W, C350-L/S |
| Level 5 (Upper-Intermediate) | SW500, HS500(Intensive class) |

2. Notes on Attending Class

1. Be sure to register for classes. If you do not, you will not be able to take classes offered by this program.
2. You cannot register for classes after the deadline (May 7(Wed.)).
※ The deadline to register for classes taught in the latter half of the term is June 13(Fri.).
3. Read the syllabus before registering for classes to learn about class goals, content, and how performance is evaluated.

Syllabus: <https://www.jlpk.ihe.tohoku.ac.jp/syllabi/>

(after March 24)

4. Please purchase your textbooks at the bookstore in the Kawauchi Campus Welfare Facilities (see B01 in the Kawauchi Campus Map). Using copied textbooks (paper photocopies, or digital copies downloaded from the Internet) in class is forbidden. Students using such copies will not be permitted to attend class. Making illegal copies of copyrighted materials is forbidden under Japanese law.

5. Class sizes are limited. Students will be accepted on a first-come basis, so you may not be able to take all your first-choice classes.

| | |
|---|-----------|
| Intensive Learning Classes up to Pre-intermediate (excluding H150), NS060 | Limit: 10 |
| C100, C110ab, C120, M100, R150ab, H150ab, K150ab, LJ100, C200, C210ab, C220, R250, K250, XR300, FT400, LC420, SC420, CP520, DU500, PC520, JM500, FM520, PW500, SF500, HS500, MH600, AD000, CC020 | Limit: 15 |
| K100, C320, C420, BJ480 | Limit: 20 |
| Other | Limit: 25 |

6. If you must be absent from class, inform the instructor directly or via a classmate. If you do not attend at least two-thirds of the total number of classes, you will receive a "D" (fail).
7. Failure to follow the above rules may result in losing eligibility to attend classes in this program. In addition, students who display a conspicuous lack of motivation to study, such as failing to complete any assignments, missing examinations without providing a valid reason, etc. may become ineligible for this program's classes.

3. Orientation video

The video below contains instructions to guide you through enrollment, from applying for a Nihongo ID to class registration. Please watch it.

<https://www.jljk.ihe.tohoku.ac.jp/video/>

<http://www.he.tohoku.ac.jp/SJLE/video/>

4. Level and Subject Codes

1. Japanese levels are numbered 1 through 6. Attainment goals are shown in the below table.

| | Attainment Goals | | |
|---------------------------------|---|----------|------|
| | | CEFR/JFS | JLPT |
| Level 1 (Beginner) | Students will acquire conversation, reading, and writing abilities necessary for daily life. | A1 | N5 |
| Level 2 (Basic) | Students will acquire speaking, listening, reading, and writing abilities for a variety of everyday situations. | A2.1 | N4 |
| Level 3 (Pre-intermediate) | Students will acquire basic Japanese skills needed for student life and attending university classes in Japan. | A2.2 | N3 |
| Level 4 (Intermediate) | Students will acquire skills needed to read articles and essays on familiar topics of interest and write simple reports. They will also learn to listen to lectures and express their own opinions in Japanese. | B1 | N2 |
| Level 5 (Upper-Intermediate) | Students will acquire Japanese skills needed to read academic texts, write reports, listen to lectures, and make presentations. | B2 | N1 |
| Level 6 (Advanced) | Students will acquire Japanese skills needed to understand specialized academic texts, write reports, listen to lectures related to their majors, and give seminar presentations. | C1 | |

CEFR: Common European Framework of Reference for Languages

JFS: JF Standard for Japanese-Language Education

JLPT: Japanese Language Proficiency Test

2. Please see below for an explanation of Subject Codes.

B 1 0 0

Abbreviated Class Subject

| | |
|---|--|
| C (Comprehensive Japanese) | Learn grammar and vocabulary according to the students' level, extend "listening" "talking" "reading" "writing" skills, and comprehensively acquire Japanese language proficiency necessary for student life in Japan. |
| B (Basic Japanese for Business Communication) | Learn elementary conversational skills needed for various aspects of everyday life in Japan, and simple expressions used in business. |
| L (Listening Comprehension) | Acquire listening skills necessary for student life, such as listening to lectures, understanding explanations, and so on. |
| S (Speaking/Conversation) | Acquire speaking skills necessary to student life, learn to make oral presentations. |
| R (Reading Comprehension) | Acquire fundamental reading comprehension skills necessary to read specialized/academic texts. |
| W (Writing/Composition) | Acquire fundamental writing skills necessary to write research plans, research papers, etc. |
| A (Applicative Practice) | Acquire the ability to apply the Japanese language. |
| H (Hiragana/Katakana) | Learn hiragana and katakana syllabaries. |
| K (Kanji/Vocabulary) | Learn kanji and its related vocabulary. |

Japanese Level (Levels 1-6)

Priority/Exclusive Program

| | |
|---|---|
| 0 | No Priority/ Non-exclusive |
| 1 | JYPE/COLABS |
| 2 | IPLA |
| 5 | Intensive Japanese Language Program |
| 6 | Japanese Language & Culture Study Program |
| 7 | GPEM |
| 8 | DATentre (Employment Support Program) |
| 9 | General Education |

5. Grading and Progression System

1. The grading scale for this program is as follows.

| | |
|----|---|
| AA | Particularly excellent (90-100 points). |
| A | Excellent (80-89 points). |
| B | Good (70-79 points). |
| C | Passed (60-69 points). |
| D | Failed (0-59 points). |
| E | Withdrew from the class. |

- ※ You will be notified of your grades at the end of each term.
- ※ If you wish to withdraw from a class, contact the class's instructor. JYPE, COLABS, and IPLA students should contact the Student Exchange Division. If you stop attending class without withdrawing, you will receive a "D."
- ※ Deadlines for dropping classes are as follows.
Term-long Classes: May 30 (Fri.)
Half-term Classes (first part of the term): May 9 (Fri.)
Half-term Classes (second part of the term): June 30 (Mon.)
- ※ You will also receive a "D" if you do not attend at least two-thirds of the total number of classes. If you require an academic transcript (Seiseki Shoumeisho), please request one from the International Education Section of the Student Exchange Division (p.20) using the URL below.
<https://forms.gle/zQ6hp9WikZcb5X616>
- ※ In general, only JYPE, COLABS, and IPLA students receive credit for classes registered in the Japanese Language Program; other students will not receive credit. However, some departments may approve credits for these classes. For details, inquire with the relevant staff at your department.

2. This program's placement test waiver system is described below.

In the Japanese Language Education Program students undergo a placement test at the beginning of the term and take classes appropriate to their level. However, students taking classes for consecutive terms may take classes one level higher than their current level in the following term without retaking the placement test if they meet the conditions in the table below (note that the following conditions pertain to grades obtained within a single semester and do not apply to grades acquired over multiple semesters).

| Current Term | Conditions | Following Term |
|--------------|---|----------------|
| Level 1 | Achieve a grade of "A" or "AA" in one of the following: C100, C110, C120, C140, or C150 | →Level 2 |
| Level 2 | Achieve a grade of "A" or "AA" in one of the following: C200, C210, C220, or C250 | →Level 3 |
| Level 3 | Achieve a grade of "A" or "AA" in one of the combinations numbered ① to ⑤ below ① C300 or C320 ② (C310-R/W or C350-R/W) and (C310-L/S or C350-L/S) ③ (C310-R/W or C350-R/W) and one skill-based class ④ (C310-L/S or C350-L/S) and one skill-based class ⑤ Three skill-based classes *Skill-based classes: L300, S300, R300, W300 | →Level 4 |
| Level 4 | Achieve a grade of "A" or "AA" in one of the combinations numbered ① to ⑤ below ① C400 or C420 ② C410-R/W and C410-L/S ③ C410-R/W and one skill-based class ④ C410-L/S and one skill-based class ⑤ Three skill-based classes* *Skill-based classes: R400, S400, L400, W400 | →Level 5 |
| Level 5 | Achieve a grade of "A" or "AA" in ① or ② below ① C500 and one skill-based class ② Three skill-based classes* *Skill-based classes: R500, S590, L500, W500 | →Level 6 |

*Two "B" grades will be counted as one "A" grade

Continuing JYPE, COLABS, and IPLA students

- Continuing students who are Level 1 to 3 ONLY may proceed to the next higher "Tentative" level with "B" or "C" grades for the conditions shown in the table above.
- Students of all levels who obtained grades of "C" or higher in the previous term CANNOT register/take the same classes again in the following term.

Students in Intensive Learning Classes

If you obtain a grade of "A" or better in C150 or C250, you may take classes that are one difficulty level higher than your current level in the second half of the term. If you obtain a grade of "B" or "C" in C150 or C250, you may take the next higher "Tentative" difficulty level but only if you will continue taking the class in the second half of the term.

6. Eligibility for Classes

Classes that can be taken at each level are as follows.

- ※ If your level is marked "Tentative," you may register for classes both at your tentative level, and one level below. (E.g. if you are "Level 4 (Tentative)," you may register for both Level 4 and Level 3 classes at the same time.)
- ※ Those JYPE, COLABS, or IPLA student who are judged to be "Tentative" 2, 3, or 4 level have to decide whether to enroll in classes EITHER in your tentative level OR one level below. You cannot register for classes both at your tentative level and one level below at the same time (for example, if you are "Level 4 (tentative)," you must choose whether to register for Level 3 classes or Level 4 classes). Those JYPE, COLABS, or IPLA student who are judged to be "Tentative" 5 or 6 level may enroll in classes in your tentative level and those one level below simultaneously (for example, if you are "Level 6 (tentative)," you may enroll in Level 5 classes and Level 6 classes simultaneously).

| Levels | Comprehensive | Listening | Speaking | Reading | Writing | Application/ Practical | Kana | Miscellaneous |
|--------|--|-----------|----------|---------|---------|---------------------------|--------|--|
| 1 | C100, C110ab, C120, C150ab, M100 | | | R150ab | | A150ab | H150ab | AD000, CC020, LJ100 |
| 2 | C200, C210ab, C220, C250a, C250bc | | | R250 | | A250a, A250bc | | AD000, CC020, LJ100, XR300 |
| 3 | C320, C310-L/S, C310-R/W, C350-L/S, C350-R/W | L300 | S300 | R300 | W300 | A350 | | AD000, CC020, LJ100, XR300 |
| 4 | C420, C410-L/S, C410-R/W | L400 | S400 | R400 | W400 | | | AD000, CC020, XR300, BJ480, FT400, LC420, SC420, DU500, PC520, FM520, SF500, NS060* |
| 5 | C500 | L500 | S590 | R500 | W500 | | | AD000, CC020, BJ480, FT400, LC420, SC420, CP520, DU500, PC520, JM500, FM520, PW500, SF500, SW500, HS500, MH600, NS060* |
| 6 | | L690 | S690 | R690 | W690 | | | AD000, CC020, LC420, SC420, CP520, DU500, PC520, JM500, FM520, PW500, SF500, SW500, HS500, MH600, NS060* |

1. Classes marked with an asterisk (*) are exclusively for that program's students. Students from other programs cannot take those classes.

2. You cannot take 2 or more classes whose codes begin with the same letter (e.g. C210 and C220, R400 and R500 etc.). Also, you cannot simultaneously take C classes with C-L/S or C-R/W classes (However, we recommend taking C-L/S and C-R/W simultaneously. you can simultaneously take C-L/S with S or L classes, and C-R/W with R or W classes).

| Kanji Level | Kanji class |
|-------------|--------------|
| K1 | K100, K150ab |
| K2 | K200, K250 |
| K3 | K300ab |
| K4 | K400 |
| K5 | K500 |
| K6 | K600 |

3. You must attend every session of class even if the class meets two or more times eachweek.

4. If a two-letter code appears in the "Other" section, the class is a seminar. These are Intercultural Collaborative Learning, except for classes marked BJ, SW, HS, and NS International and Japanese students take Intercultural Collaborative Learning together. They participate in discussions and cooperative projects to deepen their intercultural understanding. Special auditing students, non-degree students, undergraduate students, and graduate students can receive credit for Intercultural Collaborative Learning if they register them as General Education subjects. For further details, inquire with your department's Academic Affairs Section. (p.16)

5. For kanji classes, please select just one class at your designated level, or one level below or above that level. However, if the instructor does not give permission, you cannot take the class.

7. Subjects and Timetable by Level

Level 1 (Beginning)

| Course Title | JLP course code | Class | Schedule | Notes |
|--|-----------------|-------|-------------------|---------------------------------|
| Beginning Comprehensive Japanese | C100 | | Wed 5-6 · Fri 5-6 | Online class |
| | C110 | a | Mon 1-2 · Wed 1-2 | a and b cover the same content. |
| | | b | | |
| | C120 | | Wed 1-2 · Fri 1-2 | |
| | | | | |
| Minimal Japanese | M100 | | Tue 4-5 · Thu 4-5 | Latter half of term only |
| Beginning Japanese Reading Comprehension | R150 | a | Mon 3 | a and b cover the same content. |
| | | b | | |
| | | | | |
| | | | | |
| Beginning Japanese Kanji/Vocabulary | K100 | | Mon 3 | |
| | K150 | a | Thu 3 | a and b cover the same content. |
| | | b | | |

| | | | |
|--|--|--|--|
| | | | |
| | | | |
| | | | |
| | | | |

Google Classroom codes: <https://www.jlpk.ihe.tohoku.ac.jp/files/JLPK/classroomcode.pdf>

Timetable① Course code Class Instructor (Classroom※²)

■ : Intercultural Collaborative Learning (p.16)

| : Intercultural Collaborative Learning (p.16) | | | | | | |
|---|-------------------------|--------------------------|--------------------------|--------------------------|----------------------------|--------------------------|
| | 1 8 : 50- 10 : 20 | 2 10 : 30- 12 : 00 | 3 13 : 00- 14 : 30 | 4 14 : 40- 16 : 10 | 5 16 : 20- 17 : 50 | 6 18 : 00- 19 : 30 |
| M o n | C110a Ms. Azumi (C306) | R150a Ms.Mishima (R105) | | | | |
| | C110b Ms. Mikoda(C402) | R150b Ms. Azumi (R115) | | | | |
| | | K100 Ms. Yokosawa (C402) | | | | |
| | | | | | | |
| T u e | | | | M100 Ms. Endo(C101) | | |
| | | | | | | |
| W e d | C110a Ms. Oyama(C306) | | | | | |
| | C110b Ms. Azumi (C307) | | | | | |
| | C120 Ms. Backley (C401) | | | | C100 Ms. Uchiyama (Online) | |
| T h u | | K150a Ms. Sugaya (R105) | M100 Ms. Suzuki(A303) | | | |
| | | K150b Ms. Mikoda(R115) | | | | |
| | | | | | | |
| | | | | | | |
| F r i | C120 Ms. Ohori(C404) | | | | C100 Ms. Kikuchi(Online) | |
| | | | | | | |
| | | | | | | |

| | | | | |
|--|--|--|--|--|
| | | | | |
| | | | | |
| | | | | |
| | | | | |
| | | | | |

※²The classrooms which are titled with "R" are located in International Exchange Building (A12 in the Kawauchi Campus Map p.21).

Level 2 (Basic)

| Course Title | JLP course code | Class | Schedule | Notes |
|--------------------------------------|-----------------|-------|-------------------|---------------------------------|
| Basic Comprehensive Japanese | C200 | | Mon 5-6 · Thu 5-6 | Online class |
| | C210 | a | Mon 1-2 · Wed 1-2 | a and b cover the same content. |
| | | b | | |
| | C220 | | Wed 1-2 · Fri 1-2 | |
| | | | | |
| | | | | |
| | | | | |
| Basic Japanese Reading Comprehension | R250 | | Mon 3 | |
| Basic Japanese Applicative Practice | | | | |
| | | | | |
| | | | | |
| Basic Japanese Kanji/Vocabulary | K200 | | Mon 3 | |
| | K250 | | Thu 3 | |

| | | | |
|--|--|--|--|
| | | | |
| | | | |
| | | | |

Other Intercultural Collaborative Learning classes are available in addition to those shown above. (p.16)

Google Classroom codes: <https://www.jlpk.ihe.tohoku.ac.jp/files/JLPK/classroomcode.pdf>

Timetable Course code Class Instructor (Classroom※²) : Intercultural Collaborative Learning (p.16)

| timetable | | 1 8 : 50-10 : 20 | | 2 10 : 30-12 : 00 | | 3 13 : 00-14 : 30 | | 4 14 : 40-16 : 10 | | 5 16 : 20-17 : 50 | | 6 18 : 00-19 : 30 | |
|-----------|---------------------------|---------------------|---------------------|-----------------------|--|----------------------|--|----------------------|--|-----------------------|--|----------------------|--|
| Mon. | C210a Mr. Choi(C401) | | | R250 Ms. Usui(C403) | | | | | | C200 Ms. Yan (Online) | | | |
| | C210b Ms. Mishima(C307) | | | | | | | | | | | | |
| | | | | | | | | | | | | | |
| | | | | | | | | | | | | | |
| | | | K200 Mr. Choi(C401) | | | | | | | | | | |
| Tue. | | | | | | | | | | | | | |
| | | | | | | | | | | | | | |
| | | | | | | | | | | | | | |
| Wed. | C210a Ms. Mikoda(C402) | | | | | | | | | | | | |
| | C210b Mr. Daikuhara(C403) | | | | | | | | | | | | |
| | C220 Ms. Takei(C404) | | | | | | | | | | | | |
| Thu. | | | | K250 Ms. Azumi (C405) | | | | | | C200 Mr. Choi(Online) | | | |
| | | | | | | | | | | | | | |
| | | | | | | | | | | | | | |
| Fri. | C220 Mr. Mori(C405) | | | | | | | | | | | | |
| | | | | | | | | | | | | | |
| | | | | | | | | | | | | | |
| | | | | | | | | | | | | | |

※¹In-person class: More details on Google Classroom

※²The classrooms which are titled with "R" are located in International Exchange Building (A12 in the Kawauchi Campus Map).

Level 3 (Pre- Intermediate)

| Course Title | JLP course code | Class | Schedule | Notes |
|--|-----------------|-------|-------------------|---------------------------------|
| Pre-Intermediate Comprehensive Japanese | C320 | | Wed 1-2 · Fri 1-2 | |
| Pre-Intermediate Comprehensive Japanese (Reading/Writing) | C310-R/W | | Wed 1-2 | |
| | | | | |
| Pre-Intermediate Comprehensive Japanese (Listening/Speaking) | C310-L/S | | Mon 1-2 | |
| | | | | |
| Pre-Intermediate Japanese Listening Comprehension | L300 | | Fri 4 | Online class |
| Pre-Intermediate Japanese Speaking/Conversation | S300 | | Thu 4 | |
| Pre-Intermediate Japanese Reading Comprehension | R300 | | Wed 3 | |
| Pre-Intermediate Japanese Writing/Composition | W300 | | Tue 3 | |
| Pre-Intermediate Japanese Applicative Practice | | | | |
| Pre-Intermediate Japanese Kanji/Vocabulary | K300 | a | Tue 3 | a and b cover the same content. |
| | | b | Fri 3 | |

| | | | |
|--|--|--|--|
| | | | |
| | | | |
| | | | |
| | | | |

Google Classroom codes: <https://www.jlpk.ihe.tohoku.ac.jp/files/JLPK/classroomcode.pdf>

Timetable | | | | |-------------|-------|------------------------| | Course code | Class | Instructor (Classroom) | |-------------|-------|------------------------| : Intercultural Collaborative Learning (p.16)

| | 1 8 : 50-10 : 20 | 2 10 : 30-12 : 00 | 3 13 : 00-14 : 30 | 4 14 : 40-16 : 10 | 5 16 : 20-17 : 50 | 6 18 : 00-19 : 30 |
|------|-----------------------------|----------------------|---------------------------|---------------------------|----------------------|----------------------|
| Mon. | C310-L/S Ms. Yokosawa(C403) | | | | | |
| | | | | | | |
| Tue. | | | K300a Ms. Sugaya(C401) | | | |
| | | | W300 Ms. Sawabe(C404) | | | |
| Wed. | C310-R/W Ms. Mishima(C406) | | R300 Mr. Uehara(C404) | | | |
| | C320 Ms. Usui(C405) | | | | | |
| Thu. | | | | S300 Ms. Shukuri(C404) | | |
| | | | | | | |
| Fri. | C320 Ms. Azumi (C406) | | K300b Mr. Choi(C407) | L300 Ms. Azumi(Online) | | |
| | | | | | | |

※¹In-person class: More details on Google Classroom

Level 4 (Intermediate)

| Course Title | JLP course code | Schedule | Notes |
|--|-----------------|-------------------|--------------|
| Intermediate Comprehensive Japanese | C420 | Wed 1-2 · Fri 1-2 | |
| Intermediate Comprehensive Japanese (Reading/Writing) | C410-R/W | Wed 1-2 | |
| Intermediate Comprehensive Japanese (Listening/Speaking) | C410-L/S | Mon 1-2 | |
| Intermediate Japanese Listening Comprehension | L400 | Fri 5 | Online class |
| Intermediate Japanese Speaking/Conversation | S400 | Tue 3 | |
| Intermediate Japanese Reading Comprehension | R400 | Mon 4 | |
| Intermediate Japanese Writing/Composition | W400 | Tue 1 | |
| | | | |
| Intermediate Japanese Kanji/Vocabulary | K400 | Wed 3 | |
| | | | |

| | | | |
|--|--|--|--|
| | | | |
| | | | |
| | | | |
| | | | |
| | | | |
| | | | |

Google Classroom codes: <https://www.jlpk.ihe.tohoku.ac.jp/files/JLPK/classroomcode.pdf>

Timetable Course code Class Instructor (Classroom) ■ : Intercultural Collaborative Learning (p.16)

| | 1 8 : 50-10 : 20 | 2 10 : 30-12 : 00 | 3 13 : 00-14 : 30 | 4 14 : 40-16 : 10 | 5 16 : 20-17 : 50 | 6 18 : 00-19 : 30 |
|------|---|----------------------|----------------------------|----------------------|--------------------------|----------------------|
| Mon. | C410-L/S Mr. Mori(C404) | | | R400 Ms. Usui(C403) | | |
| Tue. | W400 Ms. Takahashi (C404) | | S400 Mr. Nakamura(A405) | | | |
| Wed. | C410-R/W Ms. Suzuki(C408) C420 Ms. Ohori(C407) | | K400 Ms. Mikoda(C402) | | | |
| Thu. | | | | | | |
| Fri. | C420 Mr. Choi(C407) | | | | L400 Mr. Choi(Online) | |

※¹ In-person class : More details on Google Classroom

Level 5 (Upper-Intermediate)

| Course Title | JLP course code | Schedule | Notes |
|---|-----------------|----------|--------------|
| Upper-Intermediate Comprehensive Japanese | C500 | Fri 1-2 | |
| Upper-Intermediate Japanese Listening Comprehension | L500 | Fri 5 | Online class |
| | | | |
| Upper-Intermediate Japanese Reading Comprehension | R500 | Wed 4 | |
| Upper-Intermediate Japanese Writing/Composition | W500 | Mon 3 | |
| Upper-Intermediate Japanese Kanji/Vocabulary | K500 | Tue 3 | |
| | | | |
| | | | |
| | | | |

| | | | |
|--|--|--|--|
| | | | |
| | | | |
| | | | |
| | | | |
| | | | |
| | | | |
| | | | |
| | | | |
| | | | |
| | | | |

Google Classroom codes: <https://www.jlpk.ihe.tohoku.ac.jp/files/JLPK/classroomcode.pdf>

Timetable

| | 1 8 : 50-10 : 20 | 2 10 : 30-12 : 00 | 3 13 : 00-14 : 30 | 4 14 : 40-16 : 10 | 5 16 : 20-17 : 50 | 6 18 : 00-19 : 30 |
|------|-----------------------|----------------------|-----------------------------|--------------------------|----------------------------------|----------------------|
| Mon. | | | W500 Mr. Daikuhara(C307) | | | |
| Tue. | | | K500 Ms. Hayashi(A306) | | | |
| Wed. | | | | R500 Mr. Uehara(C404) | | |
| Thu. | | | | | | |
| Fri. | C500 Ms. Mikoda(C408) | | | | L500 Mr. Ichinose (Online) | |

※¹ In-person class: More details on Google Classroom

Level 6 (Advanced)

| Course Title | JLP course code | Schedule | Notes |
|------------------------------------|-----------------|----------|-------|
| | | | |
| | | | |
| | | | |
| | | | |
| Advanced Japanese Kanji/Vocabulary | K600 | Thu 3 | |
| | | | |

| | | | |
|--|--|--|--|
| | | | |
| | | | |
| | | | |
| | | | |

Google Classroom codes: <https://www.jlpk.ihe.tohoku.ac.jp/files/JLPK/classroomcode.pdf>

Timetable Course code Class Instructor (Classroom) : Intercultural Collaborative Learning (p.16)

| | 1 8 : 50-10 : 20 | 2 10 : 30-12 : 00 | 3 13 : 00-14 : 30 | 4 14 : 40-16 : 10 | 5 16 : 20-17 : 50 | 6 18 : 00-19 : 30 |
|------|---------------------|----------------------|---------------------------|----------------------|----------------------|----------------------|
| Mon. | | | | | | |
| Tue. | | | | | | |
| Wed. | | | | | | |
| Thu. | | | K600 Ms. Hayashi(A204) | | | |
| Fri. | | | | | | |

※'In-person class: More details on Google Classroom

Level 0～6 Intercultural Collaborative Learning List

Intercultural Collaborative Learning: International and Japanese students take Intercultural Collaborative Learning together. They participate in discussions and cooperative projects to deepen their intercultural understanding.

※In some cases, special auditing students, credited non-degree students, and undergraduate students can receive credit for Intercultural Collaborative Learning classes if they register them as General Education subjects.

Inquire with your department's Educational Affairs Section for details and complete registration within the General Education enrollment period.

| Course Title | JLP course code | General Education Course Code | The course schedule | Recommended Level: ◎ Available Level: ○ | | | | | |
|--|-----------------|-------------------------------|---------------------|--|---|---|---|---|---|
| | | | | 1 | 2 | 3 | 4 | 5 | 6 |
| Beginner Aikido learning with Japanese students | AD000 | CB43307 | Thu 3 | ◎ | ◎ | ◎ | ◎ | ◎ | ◎ |
| Connecting Local Communities and the World: Problem-based Learning Project | CC020 | CB43111 | Thu 3 | ◎ | ◎ | ◎ | ◎ | ◎ | ◎ |
| Learning Japanese Culture through Comedy | LJ100 | CB35102 | Wed 5 | ◎ | ◎ | ○ | | | |
| Connecting the World via XR and the Metaverse | XR300 | CB25102 | Wed 4 | | ○ | ◎ | ◎ | | |
| Funny Talks and Language | FT400 | CB12110 | Mon 2 | | | | ◎ | ◎ | |
| Unique Aspects of Japanese Language and Culture | LC420 | CB33113 | Wed 3 | | | | ◎ | ◎ | ○ |
| Seeing Home Country and Area from Japan | SC420 | CB54104 | Fri 4 | | | | ◎ | ◎ | ○ |
| Cooperative Project with Students from Different Backgrounds | CP520 | CB22126 | Tue 2 | | | | | ◎ | ◎ |
| Deepening one's understanding of oneself and others | DU500 | CB35101 | Wed 5 | | | | ○ | ◎ | ◎ |
| Participate in social activities in Sendai to solve problems | PC520 | CB32119 | Wed 2 | | | | ○ | ◎ | ◎ |
| Japanese Language and Culture in Movies | JM500 | CB24111 | Tue 4 | | | | | ◎ | ◎ |
| Learn about Japanese fermented food and consider the overseas expansion of Sendai Miso | FM520 | CB25103 | Tue 5 | | | | ○ | ◎ | ◎ |
| Playback Theater Workshop : basic | PW500 | CB12109 | Mon 2 | | | | | ◎ | ◎ |
| Creating a Short Film through International Collaboration | SF500 | CB45116 | Thu 5 | | | | ○ | ◎ | ◎ |
| Intellectual History of Modern Japan | MH600 | CB52108 | Fri 2 | | | | | ○ | ◎ |

7. Class Schedule by level

Level 1

| | April | May | June | July | August |
|-------|--------|-----|------|------|--------|
| C100 | 4/9 | | | 7/16 | |
| C110a | 4/9 | | | 7/14 | |
| C110b | 4/9 | | | 7/14 | |
| C120 | 4/9 | | | 7/16 | |
| C150a | 4/11 | | 6/6 | | |
| C150b | 4/11 | | 6/6 | | |
| M100 | | | 6/10 | 7/24 | |
| R150a | 4/14 | | | 7/14 | |
| R150b | 4/14 | | | 7/14 | |
| A150a | 4/15 | | 6/17 | | |
| A150b | 4/15 | | 6/17 | | |
| H150a | 4/8-10 | | | | |
| H150b | 4/8-10 | | | | |
| K100 | 4/14 | | | 7/14 | |
| K150a | 4/17 | | | 7/17 | |
| K150b | 4/17 | | | 7/17 | |
| LJ100 | 4/9 | | | 7/16 | |
| AD000 | 4/10 | | | 7/17 | |
| CC020 | 4/10 | | | 7/17 | |

Level 2

| | April | May | June | July | August |
|-------|-------|-----|------|------|--------|
| C200 | 4/10 | | | 7/17 | |
| C210a | 4/9 | | | 7/28 | |
| C210b | 4/9 | | | 7/14 | |
| C220 | 4/9 | | | 7/16 | |
| C250a | 4/10 | | 6/2 | | |
| C250b | | | 6/9 | 7/28 | |
| C250c | | | 6/9 | 7/28 | |
| R250 | 4/14 | | | 7/28 | |
| A250a | 4/15 | | 6/10 | | |
| A250b | | | 6/24 | 7/29 | |
| A250c | | | 6/24 | 7/29 | |
| K200 | 4/14 | | | 7/28 | |
| K250 | 4/10 | | | 7/10 | |
| AD000 | 4/10 | | | 7/17 | |
| CC020 | 4/10 | | | 7/17 | |

Level 3

| | April | May | June | July | August |
|----------|-------|-----|------|------|--------|
| C320 | 4/9 | | | 7/18 | |
| C310-R/W | 4/9 | | | 7/9 | |
| C350-R/W | | | 6/6 | 7/22 | |
| C310-L/S | 4/14 | | | 7/14 | |
| C350-L/S | | | 6/9 | 7/28 | |
| L300 | 4/18 | | | 7/25 | |
| S300 | 4/10 | | | 7/10 | |
| R300 | 4/9 | | | 7/9 | |
| W300 | 4/8 | | | 7/22 | |
| A350 | | | 6/17 | 7/29 | |
| K300a | 4/8 | | | 7/22 | |
| K300b | 4/11 | | | 7/18 | |
| XR300 | 4/9 | | | 7/16 | |
| AD000 | 4/10 | | | 7/17 | |
| CC020 | 4/10 | | | 7/17 | |

Level 4

| | April | May | June | July | August |
|----------|-------|------|------|------|--------|
| C420 | 4/9 | | | 7/18 | |
| C410-R/W | 4/9 | | | 7/9 | |
| C410-L/S | 4/14 | | | 7/14 | |
| L400 | 4/11 | | | 7/18 | |
| S400 | 4/8 | | | 7/22 | |
| R400 | 4/14 | | | 7/28 | |
| W400 | 4/8 | | | 7/22 | |
| BJ480 | 4/10 | 5/29 | | | |
| K400 | 4/9 | | | 7/9 | |
| NS060 | 4/9 | | | 7/23 | |
| FT400 | 4/14 | | | 7/28 | |
| LC420 | 4/9 | | | 7/16 | |
| SC420 | 4/11 | | | 7/25 | |
| AD000 | 4/10 | | | 7/17 | |
| CC020 | 4/10 | | | 7/17 | |

Level 5

| | April | May | June | July | August |
|-------|-------|-----|--|------|--------|
| C500 | 4/11 | | | 7/18 | |
| L500 | 4/11 | | | 7/18 | |
| R500 | 4/9 | | | 7/9 | |
| S590 | 4/16 | | | 7/23 | |
| W500 | 4/14 | | | 7/14 | |
| K500 | 4/8 | | | 7/22 | |
| SW500 | | | 6/4 | 7/23 | |
| HS500 | | | Intensive Course : Aug. 4th, 5th, 6th, and 7th | | |
| NS060 | 4/9 | | | 7/23 | |
| CP520 | 4/8 | | | 7/29 | |
| DU500 | 4/9 | | | 7/16 | |
| PC520 | 4/9 | | | 7/16 | |
| JM500 | 4/8 | | | 7/29 | |
| FM520 | 4/8 | | | 7/29 | |
| PW500 | 4/14 | | | 7/14 | |
| SF500 | 4/10 | | | 7/17 | |
| AD000 | 4/10 | | | 7/17 | |
| CC020 | 4/10 | | | 7/17 | |

Level 6

| | April | May | June | July | August |
|-------|-------|-----|------|------|--------|
| L690 | 4/8 | | | 7/29 | |
| S690 | 4/10 | | | 7/24 | |
| R690 | 4/8 | | | 7/29 | |
| W690 | 4/10 | | | 7/17 | |
| K600 | 4/10 | | | 7/10 | |
| NS060 | 4/9 | | | 7/23 | |
| MH600 | 4/11 | | | 7/25 | |
| AD000 | 4/10 | | | 7/17 | |
| CC020 | 4/10 | | | 7/17 | |

8. Contact Information

Frequently Asked Questions are summarized below. Please check them before making inquiries.

<https://www.jljk.ihe.tohoku.ac.jp/inquiry/>

Inquiries about Japanese Classes

If you are not sure which subjects to take, if you want to change your level, or if you have a problem with a class, please contact the person in charge of the relevant program by email. In your email, please include your name, program name, Nihongo ID, Japanese level, Kanji level, and a your question or issue.

| Program Name | | Coordinator (☆: main coordinator in charge) | Department/Email Address |
|--------------------------------------|-----------------------------|---|---|
| Japanese Language Program in general | | ☆Professor Natsue SUGAYA | Kawauchi Kita Campus, Kawakita Joint Building 522 Email: natsue.sugaya.e1 * tohoku.ac.jp |
| | | Associate Professor Yuko SAWABE | Kawauchi Kita Campus, Kawakita Joint Building 521 Email: yuko.sawabe.b8 * tohoku.ac.jp |
| | | Associate Professor Wataru NAKAMURA | Kawauchi Kita Campus, Kawakita Joint Building 523 Email: wataru.nakamura.a8 * tohoku.ac.jp |
| | | Associate Professor Masako HAYASHI | Kawauchi Kita Campus, Kawakita Joint Building 519 Email: masako.hayashi.c5 * tohoku.ac.jp |
| JYPE COLABS IPLA | | ☆Associate Professor Wataru NAKAMURA | Kawauchi Kita Campus, Kawakita Joint Building 523 Email: wataru.nakamura.a8 * tohoku.ac.jp |
| | | Professor Natsue SUGAYA | Kawauchi Kita Campus, Kawakita Joint Building 522 Email: natsue.sugaya.e1 * tohoku.ac.jp |
| Intensive Japanese Language Program | LEVEL 1→2 3 or higher | Associate Professor Yukiko SHUKURI | Kawauchi Kita Campus, Kawakita Joint Building 518 Email: yukiko.shukuri.a5 * tohoku.ac.jp |
| | LEVEL 2→3 | Associate Professor Yuko SAWABE | Kawauchi Kita Campus, Kawakita Joint Building 521 Email: yuko.sawabe.b8 * tohoku.ac.jp |
| Japanese Studies Program | | Professor Natsue SUGAYA | Kawauchi Kita Campus, Kawakita Joint Building 522 Email: natsue.sugaya.e1 * tohoku.ac.jp |

※ The location of the Kawakita Joint Building is shown on A07 in the Kawauchi Campus Map.

※ Replace * with @ in email addresses.

※ If you need to contact class instructors, please do so through Google Classroom.

Inquiries about Official Procedures

Student Exchange Division, International Education Section
Kawauchi Kita Campus Education and Student Support Center, 2F
(See A01 in the Kawauchi Campus Map)
Email: sed2*grp.tohoku.ac.jp

(Nihongo ID application, class registration, placement test, etc.)

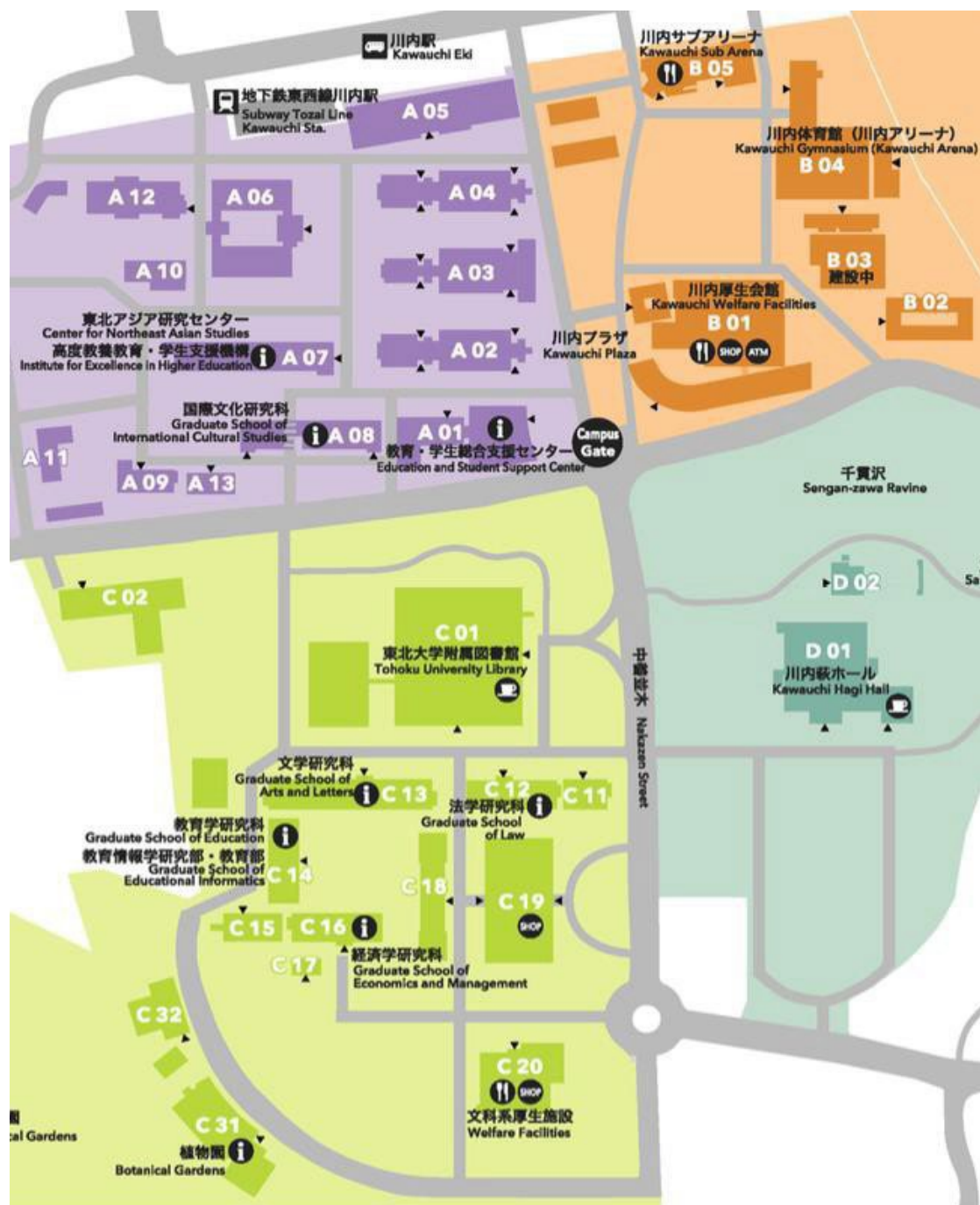
Japanese Language Program at Kawauchi
Kawauchi Kita Campus International Exchange Building 1F R113 (see A12 in the Kawauchi Campus Map)
Email: adm-jljk*g-mail.tohoku-university.jp

Note: 1. Replace * with @ in email addresses

2. We cannot respond to inquiries on weekends or holidays.

3. We do not issue hours certificates.

9. Kawauchi Campus Map



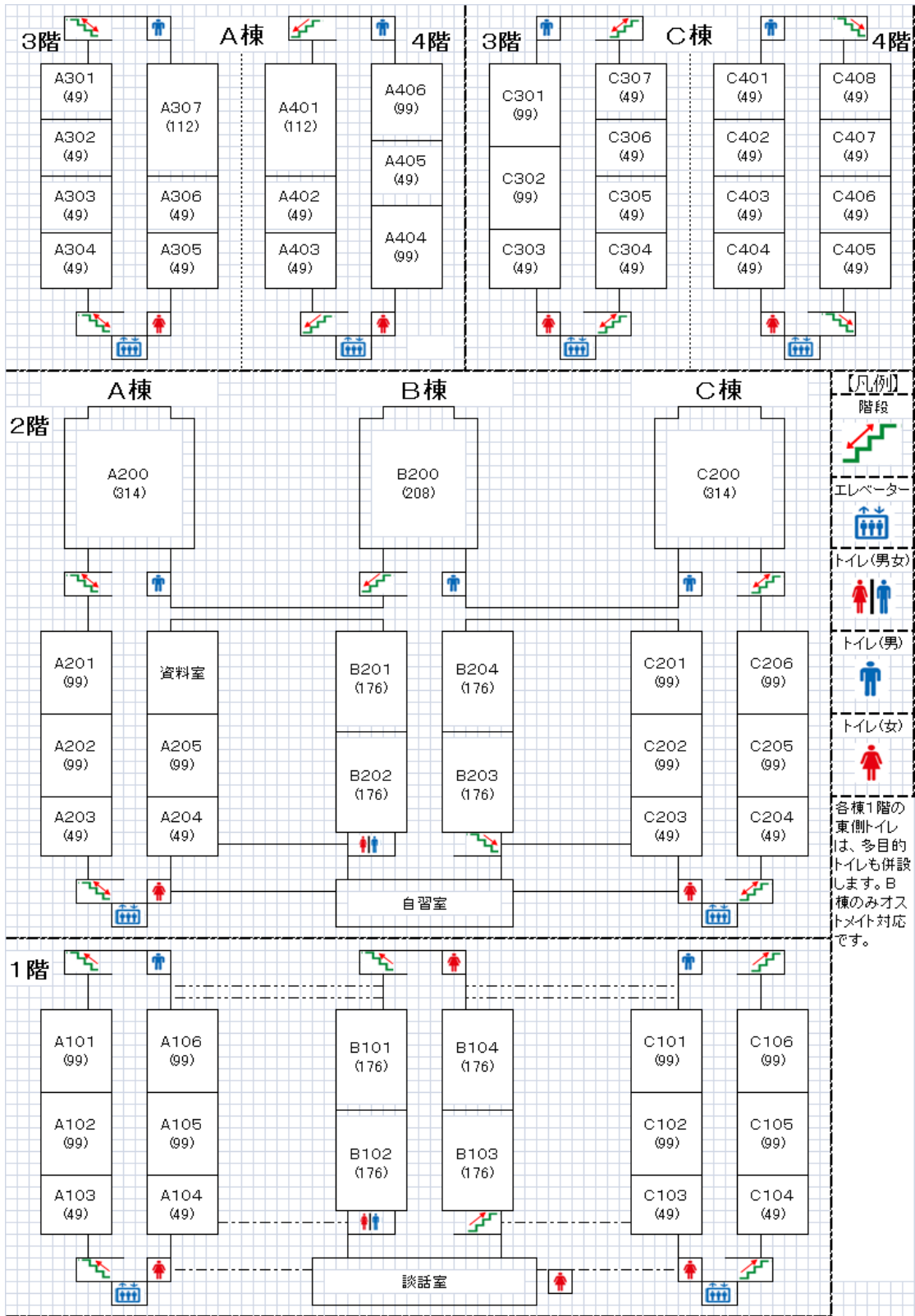
- A 01 教育・学生総合支援センター
Education and Student Support Center
- A 02 講義棟A棟
Lecture Rooms A
- A 03 講義棟B棟
Lecture Rooms B
- A 04 講義棟C棟
Lecture Rooms C
- A 05 マルチメディア教育研究棟 (教育情報基盤センター)
Multimedia Education and Research Complex (Center for Information Technology in Education)
- A 06 学生実験棟
Student Laboratories
- A 07 川北合同研究棟
Kawauchi Research Forum
(高度教養教育・学生支援機構/東北アジア研究センター)
(Institute for Excellence in Higher Education / Center for Northeast Asian Studies)
- A 08 国際文化研究棟
Graduate School of International Cultural Studies
- A 09 保健管理センター
Student Health Care Center
- A 10 教育研究基盤支援棟 4
Education and Research Base Support Building 4
- A 11 教育研究基盤支援棟 5
Education and Research Base Support Building 5
- A 12 国際交流棟
International Exchange Building
- A 13 学生相談所
University Counseling Center

- B 01 川内厚生会館
Kawauchi Welfare Facilities
- B 02 川内サークル部室棟
Kawauchi Circle and Club Building
- B 03 川内課外活動共用施設 (川内ホール)
Kawauchi Extracurricular Activity Shared Facilities (Kawauchi Hall)
- B 04 川内体育館 (川内アリーナ)
Kawauchi Gymnasium (Kawauchi Arena)
- B 05 川内サブアリーナ
Kawauchi Sub Arena

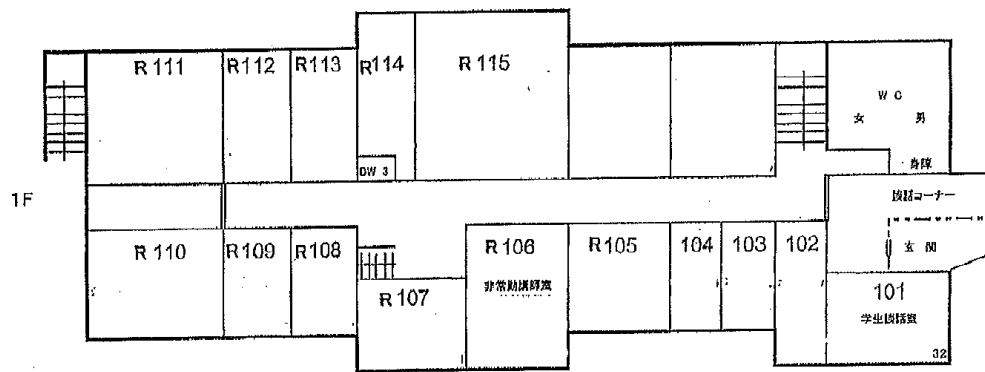
- C 01 東北大学附属図書館
Tohoku University Library
- C 02 入試センター
Admission Center
- C 11 文・法合同研究棟
Arts and Letters / Law Joint Building
- C 12 法学研究科棟
Graduate School of Law
- C 13 文学研究科棟
Graduate School of Arts and Letters
- C 14 文科系総合研究棟 (教育学研究科)
New Humanities Building (Graduate School of Education)
- C 15 文科系合同研究棟
Humanities Building
- C 16 経済学研究科棟
Graduate School of Economics and Management
- C 17 経済学研究科演習室
Seminar Rooms
- C 18 中講義棟
Lecture Rooms
- C 19 文科系総合講義棟
Lecture Rooms
- C 20 文科系厚生施設 (メイプルパーク川内)
Welfare Facilities (Maple Park Kawauchi)

10. Classroom Locations

A, B, and C Classrooms (A02, A03, A04)



International Exchange Building (A12)



Multimedia Education and Research Complex (A05)

