

ATTN: Japanese Language Program at Kawauchi Students

-Due to the COVID-19 pandemic, currently all inquiries for the Student Exchange Division are being conducted by email only.

Please do not telephone or come to the office in person.

We will respond to email as quickly as possible but there may be some delay. We ask for your patience and understanding.

Email: sed2@grp.tohoku.ac.jp

-A Tohoku-dai ID is necessary to take Japanese Language Program classes. If you have not received your ID, please contact your department.

-Please carefully read the Guide on the pages below before registering for classes.

-You must log in to the campus network to register for these classes.

Campus wi-fi

<https://www.dc.tohoku.ac.jp/guide/wifi/wifi-e.html>

VPN service

<https://www.tains.tohoku.ac.jp/contents/remote/vpnstudent.html>

-Access the following URL from the campus network to log in to the academic affairs system and register for classes.

<https://jlpk.bureau.tohoku.ac.jp/entry/>

-For the time being, classes for the Japanese Language Program at Kawauchi will be held online using Google Classroom, excluding some classes for co-learning seminar. We ask all students to please follow the Tohoku University Emergency Action Plan (BCP).

-Please join Classroom using the class codes (see the class guide or class code list) for the classes you want to take.

-Please read the Enrollment Guide, which will be updated as needed, on the Japanese Language Program website.

Japanese Language Program website

<http://www.ihe.tohoku.ac.jp/SJLE/>

Tohoku University Online Class Guide

<https://sites.google.com/view/teleclass-tohoku/forstudents>

Institute for Excellence in Higher Education

Tohoku University

A Guide to the Tohoku University Japanese Language Program at Kawauchi (Updated September 29, 2021)

Second Term, AY 2021
Tohoku University Institute for Excellence in Higher Education

The Institute for Excellence in Higher Education offers the Japanese Language Program for International Students to improve the Japanese language proficiency of foreign students and researchers at Tohoku University, and other universities in Sendai. We hope that it will facilitate your everyday activities and research. There are a variety of classes, from beginner to advanced levels, so you can study at the Japanese level appropriate for you.

Table of Contents

1. Application/Class Registration
2. Notes on Attending Class
3. Orientation video
4. Level and Subject Codes
5. Grading and Progression System
6. Eligibility for Classes
7. Subjects and Timetable by Level
8. Class Schedule by level
9. Contact Information
10. Kawauchi Campus Map
11. Classroom Locations

The majority of JLPK classes will be conducted online using Google Classroom, excluding some classes for co-learning seminar.

Program Term

October 1 (Fri.) to February 3 (Thu.)

The schedule may change due to the novel coronavirus pandemic. We ask for your understanding and cooperation.

Application/Class Registration Schedule
BE SURE TO REGISTER DURING THE REGISTRATION PERIOD!

Second Semester: October 1 (Fri.) through February 3 (Thu.)

Application Period: September 21 (Tue.) - **October 14 (Thu.)**

Registration Period: October 8 (Fri.) - **October 21 (Thu.)**

4th Quarter: November 29 (Mon.) through February 3 (Thu.)

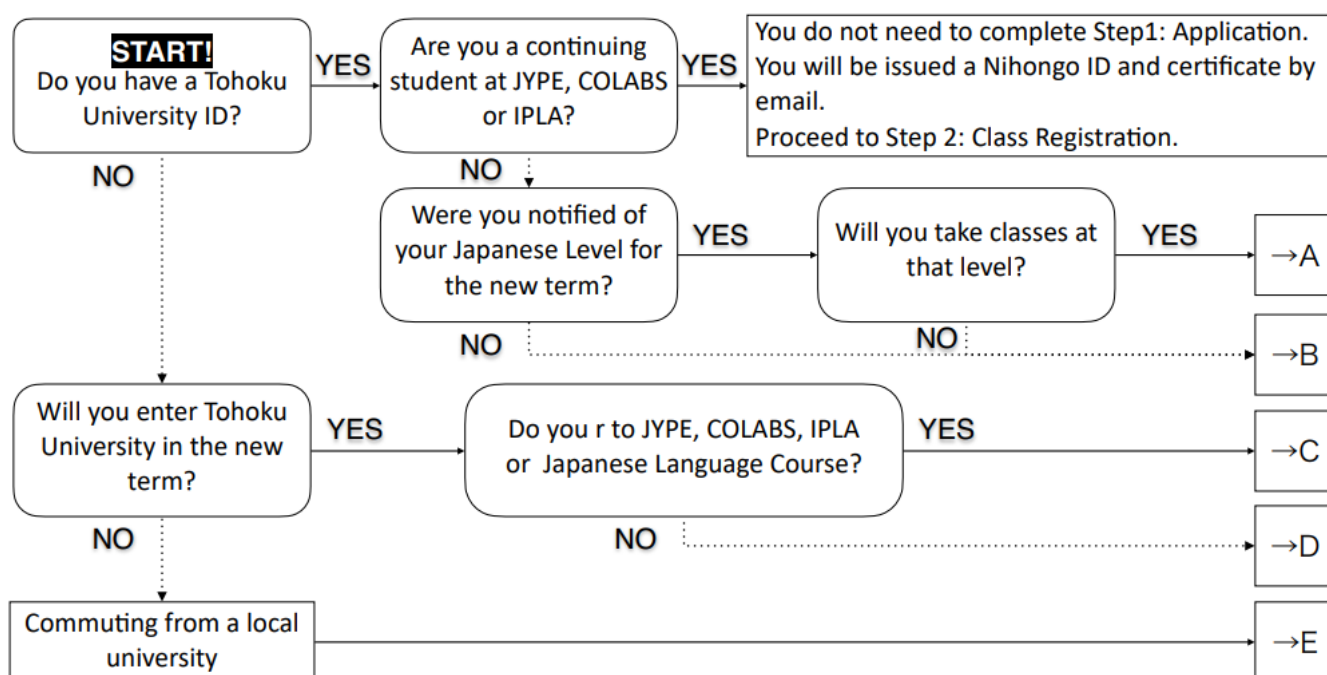
Application Period for Half-Term Classes (Second Part of Term):

November 18 (Thu.) – December 2 (Thu.)

Registration Period for Half-Term Classes (Second Part of Term):

December 1 (Wed.) - December 8 (Wed.)

1. Application/Class Registration



You must submit an application even if you applied during the previous term!

Step 1: Application

A (enrolled at TU, have an assigned Japanese level, will not take the PT):

- (1) Log in to the academic affairs system from the on-campus network to apply for classes.
 URL: <https://jlpk.bureau.tohoku.ac.jp/entry/>
 *Please be sure to register your Nihongo ID from the previous term and password with the system.
 *Applications are accepted from September 21 to October 14.
 *Applications for classes taught in the latter half of the term are accepted from November 18 to December 2.
- (2) You will receive a Nihongo ID and Excel file by email. The Excel file is for those who are taking the placement test, so you need not submit it.
- (3) Later, you will be sent a certificate showing your Japanese level for the new term.
- (4) After the term starts, please perform Step 2.

B-1 (enrolled at TU, beginner, will not take the PT):

- (1) Log in to the academic affairs system from the on-campus network to apply for classes.
URL: <https://jlpk.bureau.tohoku.ac.jp/entry/>
 - *Please be sure to choose “beginner” at the question 12 on the system.
 - *Applications are accepted from September 21 to October 14.
 - *Applications for classes taught in the latter half of the term are accepted from November 18 to December 2.
- (2) You will receive a Nihongo ID by email. Please complete the preparatory assignment on the website below before the start of classes.
URL: <http://www.he.tohoku.ac.jp/SJLE/kana/>
- (3) Later, you will receive a Level 1 (beginner) certificate.
- (4) After the term starts, please perform Step 2.

B-2 (enrolled at TU, studied Japanese before, will take the PT):

- (1) Log in to the academic affairs system from the on-campus network to apply for classes.
URL: <https://jlpk.bureau.tohoku.ac.jp/entry/>
 - * If you have a Nihongo ID and password from the previous term, please be sure to register them with the system.
 - *Applications are accepted from September 21 to October 14.
 - *Applications for classes taught in the latter half of the term are accepted from November 18 to December 2.
- (2) You will receive a Nihongo ID and Excel file by email. You will also be provided a link to information on the placement test.
- (3) Take the online placement test.
- (4) Enter your test results in the Excel file and send it to the provided email address.
- (5) You will be sent a certificate showing your Japanese level. If you were notified of a level for the new term, but also have a level determined by your test result, your level will be whichever is higher.
- (6) After the term starts, please perform Step 2.

C-1 (not yet enrolled at TU, beginner, participating in the above programs, will not take the PT):

- (1) You will receive a Nihongo ID by email. Please complete the preparatory assignment on the website below before the start of classes.
URL: <http://www.he.tohoku.ac.jp/SJLE/kana/>
- (2) Later, you will receive a Level 1 (beginner) certificate.
- (3) After entering TU, please perform Step 2.

C-2 (not yet enrolled at TU, studied Japanese before, participating in the above programs, will take the PT):

- (1) You will receive a Nihongo ID and Excel file by email. You will also be provided a link to information on the placement test.
- (2) Take the online placement test.
- (3) Enter your test results on the Excel file and send it to the provided email address.
- (4) You will be sent a certificate showing your Japanese level.
- (5) After entering TU, please perform Step 2.

D-1 (not yet enrolled at TU, beginner, general, will not take the PT):

- (1) After entering TU, log in to the academic affairs system from the on-campus network to apply for classes.
URL: <https://jlpk.bureau.tohoku.ac.jp/entry/>
 - *Please be sure to choose “beginner” at the question 12 on the system.
 - *Applications are accepted from September 21 to October 14.
 - *Applications for classes taught in the latter half of the term are accepted from November 18 to December 2.
- (2) You will receive a Nihongo ID by email. Please complete the preparatory assignment on the website below before the start of classes.
URL: <http://www.he.tohoku.ac.jp/SJLE/kana/>
- (3) Later, you will receive a Level 1 (beginner) certificate.
- (4) Please perform Step 2.

D-2 (not yet enrolled at TU, studied Japanese before, general, will take the PT):

- (1) After entering TU, log in to the academic affairs system from the on-campus network to apply for classes.
URL: <https://jlpk.bureau.tohoku.ac.jp/entry/>
*Applications are accepted from September 21 to October 14.
*Applications for classes taught in the latter half of the term are accepted from November 18 to December 2.
- (2) You will receive a Nihongo ID and Excel file by email. You will also be provided a link to information on the placement test.
- (3) Take the online placement test.
- (4) Enter your test results in the Excel file and send it to the provided email address.
- (5) You will be sent a certificate showing your Japanese level.
- (6) Please perform Step 2.

E (not affiliated with TU, will take the PT):

- (1) Send an email to the below address, informing us of your desire to take classes in the Japanese Language Program.
Address: jlpk@g-mail.tohoku-university.jp
*Applications are accepted from September 21 to October 14.
*Applications for classes taught in the latter half of the term are accepted from November 18 to December 2.
*If you are unable to create a Tohoku University ID (Tohoku University email address), you will not be able to take online classes.
- (2) You will receive a survey by email.
- (3) Enter your answers on the survey form and return it by email.
- (4) You will receive a Nihongo ID and Excel file by email. You will also be provided a link to information on the placement test.
- (5) Take the online placement test.
- (6) Enter your test results on the Excel file and send it to the provided email address.
- (7) If you are rated Level 2 (basic) or higher, you will be issued a Nihongo ID and certificate by email.
- (8) Please perform Step 2.

Step 2: Class Registration

- (1) Please join classes suitable for your level; if you wish to register after attending the first class, show your certificate and ask for the instructor's permission.
*Class sizes are limited. Students will be accepted on a first-come basis.
*Some classes preferentially accept students from certain programs.
- (2) Please join the Google Classrooms for the classes you are taking. Please do this even for classes held on campus.
- (3) Log in to the academic affairs system and register your classes using the class registration screen.
URL: <https://jlpk.bureau.tohoku.ac.jp/student/login.php>
 - ※ You will only be able to register only classes for which you have received permission from the instructors.
 - ※ IPLA students will be informed about registration in a separate email. Do NOT register with the above system.
 - ※ Class registrations are accepted from October 8 to October 21.
 - ※ Registrations for classes taught in the latter half of the term are accepted from December 1 to December 8.

*Courses in the latter half of the term

	JLP course code
Level 1 (Beginner)	M100
Level 2 (Basic)	C250b/c, R250a/b, A250b/c
Level 3 (Pre-intermediate)	A350, C350-R/W, C350-L/S, K350
Level 4 (Intermediate)	BJ480 (Intensive Class)
Level5 (Upper-Intermediate)	HS500, SW500

2. Notes on Attending Class

1. Be sure to register for classes. If you do not, you will not be able to take classes offered by this program.
2. You cannot register for classes after the deadline (October 21).
 - ※ The deadline to register for classes taught in the latter half of the term is December 8.
3. Students enrolled at universities in and around Sendai are eligible to take classes. Relatives etc. of international students are not eligible to attend classes.
 - ※ Those enrolled in universities other than Tohoku University are eligible to take classes if they are Level 2 or higher.
4. Read the syllabus before registering for classes to learn about class goals, content, and how performance is evaluated.

Syllabus: <http://www.he.tohoku.ac.jp/SJLE/syllabi/> (after September 22)

5. Please purchase your textbooks at the bookstore in the Kawauchi Campus Welfare Facilities (see B01 in the Kawauchi Campus Map). Using copied textbooks (paper photocopies, or digital copies downloaded from the Internet) in class is forbidden. Students using such copies will not be permitted to attend class. Making illegal copies of copyrighted materials is forbidden under Japanese law.
6. Class sizes are limited. Students will be accepted on a first-come basis, so you may not be able to take all your first-choice classes.

Intensive Learning Classes up to Pre-intermediate (excluding H150 and K151), NS060, RS020	Limit: 10
C100, C110, C120, B170, M100, H150, C200, C210, C220, B270, BJ480, N480, CM400, HJ420, PE420, SC420, L500, N580, CP520, IU520, JC520, JS500, LV500, PW500, TC520, L690, S690, R690, W690, BJ680, GC680, IC600, MH600, TW600, SE600, ML000	Limit: 15
K101, K102, K151, C320, S300, C420, S400, S590	Limit: 20
Other	Limit: 25

7. If you must be absent from class, inform the instructor directly or via a classmate. If you do not attend at least two-thirds of the total number of classes, you will receive a "D" (fail).
8. Failure to follow the above rules may result in losing eligibility to attend classes in this program.

3. Orientation video

The video below contains instructions to guide you through enrollment, from basic registration to signing up for classes. Please watch it.

<http://www.he.tohoku.ac.jp/SJLE/video/>

4. Level and Subject Codes

1. Japanese levels are numbered 1 through 6. Attainment goals are shown in the below table.

	Attainment Goals	CEFR/JFS	JLPT
		Level 1 (Beginner)	Students will acquire conversation, reading, and writing abilities necessary for daily life.
Level 2 (Basic)	Students will acquire speaking, listening, reading, and writing abilities for a variety of everyday situations.	A2.1	N4
Level 3 (Pre-intermediate)	Students will acquire basic Japanese skills needed for student life and attending university classes in Japan.	A2.2	N3
Level 4 (Intermediate)	Students will acquire skills needed to read articles and essays on familiar topics of interest and write simple reports. They will also learn to listen to lectures and express their own opinions in Japanese.	B1	N2
Level 5 (Upper-Intermediate)	Students will acquire Japanese skills needed to read academic texts, write reports, listen to lectures, and make presentations.	B2	N1
Level 6 (Advanced)	Students will acquire Japanese skills needed to understand specialized academic texts, write reports, listen to lectures related to their majors, and give seminar presentations.	C1	

CEFR: Common European Framework of Reference for Languages

JFS: JF Standard for Japanese-Language Education

JLPT: Japanese Language Proficiency Test

2. Please see below for an explanation of Subject Codes.

B 1 0 0

Abbreviated Class Subject

C(Comprehensive Japanese)	Learn grammar and vocabulary according to the students' level, extend "listening" "talking" "reading" "writing" skills, and comprehensively acquire Japanese language proficiency necessary for student life in Japan.
B (Basic Japanese for Business Communication)	Learn elementary conversational skills needed for various aspects of everyday life in Japan, and simple expressions used in business.
G (Grammar)	Study grammar, build fundamental Japanese skills.
L (Listening Comprehension)	Acquire listening skills necessary for student life, such as listening to lectures, understanding explanations, and so on.
S (Speaking/Conversation)	Acquire speaking skills necessary to student life, learn to make oral presentations.
R (Reading Comprehension)	Acquire fundamental reading comprehension skills necessary to read specialized/academic texts.
W (Writing/Composition)	Acquire fundamental writing skills necessary to write research plans, research papers, etc.
A(Applicative Practice)	Acquire the ability to apply the Japanese language.
H (Hiragana/Katakana)	Learn hiragana and katakana syllabaries.
K (Kanji/Vocabulary)	Learn kanji and its related vocabulary.

Japanese Level (Levels 1-6)

Priority/Exclusive Program	
0	No Priority/ Non-exclusive
1	JYPE/COLABS
2	IPLA
5	Intensive Japanese Language Program
6	Japanese Language & Culture Study Program
7	GPEM
8	DATentre (Employment Support Program)
9	General Education

Countries that use/do not use Chinese characters

0	No restrictions
1	For students from countries that do not use Chinese characters
2	For students from countries that use Chinese characters

5. Grading and Progression System

1. The grading scale for this program is as follows.

AA	Particularly excellent (90-100 points).
A	Excellent (80-89 points).
B	Good (70-79 points).
C	Passed (60-69 points).
D	Failed (0-59 points).
E	Withdrew from the class.

- ※ You will be notified of your grades at the end of each term. Upon request, your academic advisor can be notified of your grades too.
- ※ If you wish to withdraw from a class, contact the class's instructor. JYPE, COLABS, and IPLA students should contact the Student Exchange Division. If you stop attending class without withdrawing, you will receive a "D."
- ※ Deadlines for dropping classes are as follows.
Term-long Classes: November 30
Half-term Classes (first part of the term): November 12
Half-term Classes (second part of the term): December 24
- ※ You will also receive a "D" if you do not attend at least two-thirds of the total number of classes.
- ※ If you require an Academic Report (Rishuu Shoumeisho), please ask for it at the International Education Section of the Student Exchange Division (p.16).
- ※ In general, only JYPE, COLABS, and IPLA students receive credit for classes registered in the Japanese Language Program; other students will not receive credit. However, some departments may approve credits for these classes. For details, inquire with the relevant staff at your department.

2. This program's progression system is as follows.

JYPE(Level 1-2), COLABS(Level 1-2), and IPLA(Level 1-2) Students

If you obtain a C or better, and your credits are approved, you may proceed to the next difficulty level the following term.

Students in Intensive Learning Classes

If you obtain a grade of "A" or better in C150 or C250, you may take classes that are one difficulty level higher than your current level in the second half of the term. If you obtain a grade of "B" or "C" in C150 or C250, you may proceed to the next "Tentative" difficulty level in the second half of the term.

Other students

If you fulfill the conditions indicated on the table below, you may proceed to the next difficulty level the following term without taking a placement test.

Current Term	Conditions	Following Term
Level 1	Obtain an "AA" or "A" grade in both C1 and K1.	→Level 2
Level 2	Obtain an "AA" or "A" grade in both C2 and K2.	→Level 3
Level 3	1. Obtain an "AA" or "A" grade in C3 or C4. 2. Obtain 2 "AA" or "A" grades in both C-L/S or C-R/W and another Level 3 or 4 course. ※1	→Level 4
Level 4	or 3. Obtain more than 3 "AA" or "A" grades in Level 3 or 4 courses other than C3, C4, L/S or R/W. ※1 ※2	→Level 5
Level 5	1. Obtain 2 "AA" or "A" grades in both C5 and another level 5 course, ※1 or 2. Obtain more than 3 "AA" or "A" grades in level 5 courses other than C5. ※1 ※2	→Level 6

※1 Except the grades of Kanji classes

※2 Obtaining 2 "B" grades is considered equal to obtaining an "A"

6. Eligibility for Classes

Classes that can be taken at each level are as follows.

- ※ If your level is marked "Tentative," you may register for classes both at your tentative level, and one level below. (E.g. if you are "Level 4 (Tentative)," you may register for both Level 4 and Level 3 classes at the same time.)
- ※ If you are a JYPE, COLABS, or IPLA student you must register for classes either in your tentative level, or one level below. You cannot register for classes both at your tentative level and one level below at the same time. (E.g. if you are "Level 4 (Tentative)," you must choose whether to register for Level 3 classes or Level 4 classes.)

Levels		Comprehensive	Listening	Speaking	Reading	Writing	Application/ Practical	Kana	Miscellaneous
1	2 (Tentative)	C100, C110, C120, C150a, C150b*, B170, M100			R150a, R150b*		A150a, A150b*	H150	
2	3 (Tentative)	C200, C210, C220, C250a/b, C250c*, B270			R250a, R250b*		A250a/b, A250c*		ML000
3	4 (Tentative)	C320, C310-L/S, C310-R/W, C350-L/S, C350-R/W	L300	S300	R300	W300	A350		ML000
4	5 (Tentative)	C420, C410-L/S, C410-R/W	L400	S400	R400	W400			ML000, N480, BJ480, CM400, HJ420, PE420, SC420, RS020, NS060*
5	6 (Tentative)	C500	L500	S590	R500	W500			ML000, BJ480, CM400, HJ420, PE420, SC420, N580, TC520, CP520, IU520, JC520, JS500, LV500, PW500, WP500, CJ500, SW500, HS500, RS020, NS060*
6			L690	S690	R690	W690			ML000, TC520, CP520, IU520, JC520, JS500, LV500, PW500, WP500, CJ500, SW500, HS500, BJ680, JB600, GC680, IC600, MH600, TW600, SE600, PH600, RS020, NS060*

1. Classes marked with an asterisk (*) are exclusively for that program's students. Students from other programs cannot take those classes.
2. You cannot take 2 or more classes whose codes begin with the same letter (e.g. C210 and C220, R400 and R500 etc.). Also, you cannot simultaneously take C classes with C-L/S or C-R/W classes (However, we recommend taking C-L/S and C-R/W simultaneously. you can simultaneously take C-L/S with S or L classes, and C-R/W with R or W classes).
3. You must attend every session of class even if the class meets two or more times each week.
4. If you are a JYPE, COLABS, or IPLA student continuing from the previous term, and your certificate is marked "J only" (E.g. J3only, J2only, etc.) you may register only for the designated "Japanese" classes in your exchange program and a Kanji class.
5. If a two-letter code appears in the "Other" section, the class is a seminar. These are International Co-learning Seminars, except for classes marked BJ, CJ, SW, HS, PH, RS and NS. International and Japanese students take International Co-learning Seminars together. They participate in discussions and cooperative projects to deepen their intercultural understanding. Special auditing students, non-degree students, undergraduate students, and graduate students can receive credit for International Co-learning Seminars if they register them as General Education subjects. For further details, inquire with your department's Academic Affairs Section.
6. For kanji classes, please select just one class at your designated level, or one level below or above that level. However, if the instructor does not give permission, you cannot take the class
7. APRU VSE students can take the following classes only: C100a, C200, C310-R/W, C410-R/W, N480 and N580.

Kanji Level	Kanji
K1	K101, K102, K151
K2	K201, K202, K250
K3	K300, K350
K4	K400
K5	K501, K502

7. Subjects and Timetable by Level

Level 1(Beginning)

Course Title	JLP course code	Class	The course schedule	Notes	Google Classroom Code
Beginning Comprehensive Japanese	C100	a	Mon 4-5 · Thu 4-5	Online class a and b will provide same contents. (Same as below)	6gfa3qs
		b	Tue 1-2 · Fri 1-2		z4kwosj
	C110		Mon 1-2 · Thu 1-2		islmkyp
	C120	a	Wed 1-2 · Fri 1-2		muc3vfp
		b	Wed 5-6 · Fri 5-6		asmz2te
	C150	a	Mon 1-2 · Tue 1-2 · Thu 1-2 · Fri 1-2	Express	5sgaiow
b		Mon 1-2 · Tue 1-2 · Thu 1-2 · Fri 1-2	Only Intensive Japanese Language Course students Express	sjdgw6z	
Beginning Japanese for Business Communication	B170		Wed1-2		dcxg7cy
Minimal Japanese	M100		Tue 4-5 · Thu 4-5		u5gnstd
Beginning Japanese Reading Comprehension	R150	a	Tue3 · Fri3	Express	6jluqyn
		b	Tue3 · Fri3	Only Intensive Japanese Language Course students Express	6kucnlf
Beginning Japanese Applicative Practice	A150	a	Mon 4	Express	6my453z
		b	Mon 4	Only Intensive Japanese Language Course students Express	6i73jqr
Hiragana/Katakana	H150	a	Oct. 4 - Oct. 7		jqap4gy
		b	Oct. 4 - Oct. 7		xmjeraf
Beginning Japanese Kanji/Vocabulary	K101	a	Mon 3 · Thu 3		26yeop2
		b	Wed 3 · Fri 3		d3dbzknk
	K102		Tue 3	For students who have Kanji background	uzlq4p7
	K151	a	Mon 3 · Thu 3		6ljlwg6
b		Mon 3 · Thu 3		lub6vpu	

Timetable① Course code Class Instructor

	1 8 : 50- 10 : 20	2 10 : 30- 12 : 00	3 13 : 00- 14 : 30	4 14 : 40- 16 : 10	5 16 : 20- 17 : 50	6 18 : 00- 19 : 30
Mon.	C150a Ms. Usui	K151a Ms. Mikoda	A150a Mr. Soejima	C100a Ms. Degura	C120b Ms. Usui	
	C150b Ms. Uchiyama					
	C110 Ms. Yan	K101a Ms. Seki				
Tue.	C150a Ms. Kikuchi	R150a Ms. Hayashi	M100 Ms. Abe			
	C150b Ms. Abe	R150b Ms. Yan				
	C100b Ms. Seki	K102 Ms. Shukuri				
Wed.	C120a Ms. Kikuchi	K101b Ms. Kashiwagi				
	B170 Ms. Backley					
Thu.	C150a Ms. Ohori	K151a Ms. Yan	M100 Mr. Choi	C100a Ms. Suzuki		
	C150b Ms. Shukuri	K151b Ms. Kashiwagi				
	C110 Ms. Moriwaki	K101a Ms. Degura				
Fri.	C150a Ms. Tachibana	R150a Ms. Miyu Takahashi			C120b Ms. Miyu Takahashi	
	C150b Ms. Mishima	R150b Ms. Usui				
	C100b Ms. Azumi	K101b Ms. Degura				
	C120a Ms. Backley					

Timetable② : H150

3days intensive course to master Hiragana and Katakana

		1 8 : 50- 10 : 20	2 10 : 30- 12 : 00	3 13 : 00- 14 : 30
Oct.4 Mon.	a	Ms. Usui		Ms. Mikoda
	b	Ms. Uchiyama		Ms. Uchiyama
Oct.5 Tue.	a	Ms. Kikuchi		Ms. Hayashi
	b	Ms. Abe		Ms. Yan
Oct.7 Thu.	a	Ms. Ohori		Ms. Yan
	b	Ms. Shukuri		Ms. Kashiwagi

Level 2(Basic)

Course Title	JLP course code	Class	The course schedule	Notes	Google Classroom Code
Basic Comprehensive Japanese	C200		Mon 4-5 · Thu 4-5	Online class	guh15xb
	C210		Mon 1-2 · Thu 1-2		eusscnu
	C220	a	Wed 1-2 · Fri 1-2	a, b (and c) will provide same contents. (Same as below)	dnsmkhu
		b	Wed 5-6 · Fri 5-6		6vkvx7t
	C250	a	Mon 1-2 · Tue 1-2 · Thu 1-2 · Fri 1-2	Express	f6gz456
		b	Mon 1-2 · Tue 1-2 · Thu 1-2 · Fri 1-2		xjhxuin
c		Mon 1-2 · Tue 1-2 · Thu 1-2 · Fri 1-2	Only Intensive Japanese Language Course students Express	qxpqgul	
Basic Japanese for Business Communication	B270		Wed 1-2		nn47ors
Basic Japanese Reading Comprehension	R250	a	Tue 3 · Fri 3	Express	4oe7icv
		b	Tue 3 · Fri 3	Only Intensive Japanese Language Course students Express	q3wnxm4
Basic Japanese Applicative Practice	A250	a	Tue 4	Express	wfq44fc
		b	Mon 4		6z53jo5
		c	Mon 4	Only Intensive Japanese Language Course students Express	kysjnb3
Basic Japanese Kanji/Vocabulary	K201		Mon 3 · Thu 3		jf35cf
	K202		Wed 3	For students who have Kanji background	udieshq
	K250		Mon 3 · Tue 3 · Thu 3 · Fri 3	Express	dt2to7o

Basic Co-learning Seminar	JLP course code	The course schedule	Course Code	Google Classroom Code
Japanese Literature in English & Japanese	ML000	Thu 4	CB44207	iwtzh7x

Timetable

	1 8 : 50-10 : 20	2 10 : 30-12 : 00	3 13 : 00-14 : 30	4 14 : 40-16 : 10	5 16 : 20-17 : 50	6 18 : 00-19 : 30	
Mon.	C250b Ms. Usui		K250 Ms. Yokosawa	A250b Mr. Soejima			
	C250c Ms. Uchiyama			A250c Mr. Uehara			
	C250a Mr. Choi		K201 Ms. Ohori	C200 Mr. Choi			
	C210 Ms. Ohori						
Tue.	C250b Ms. Kikuchi		R250a Ms. Hayashi	A250a Ms. Endo			
	C250c Ms. Abe		R250b Ms. Yan				
	C250a Ms. Yokosawa		K250 Ms. Azumi				
Wed.	C220a Ms. Kashiwagi		K202 Ms. Mishima		C220b Ms. Miyu Takahashi		
	B270 Ms. Suzuki						
Thu.	C250b Ms. Ohori		K250 Mr. Choi	C200 Ms. Yan			
	C250c Ms. Shukuri						
	C250a Ms. Kashiwagi		K201 Ms. Moriwaki	ML000 Ms. M. Mushiake			
	C210 Ms. Azumi						
Fri.	C250b Ms. Tachibana		R250a Ms. Miyu Takahashi		C220b Mr. Choi		
	C250c Ms. Mishima		R250b Ms. Usui				
	C250a Ms. Moriwaki		K250 Ms. Endo				
	C220a Mr. Mori						

※ : Co-learning Seminar(p.7)

Level 3 (Pre- Intermediate)

Course Title	JLP course code	The course schedule	Notes	Google Classroom Code
Pre-Intermediate Comprehensive Japanese	C320	Wed 1-2 · Fri 1-2		fe7jfx4
Pre-Intermediate Comprehensive Japanese (Reading/Writing)	C310-R/W	Thu 1-2	Online class	n4xvfvk
	C350-R/W	Tue 1-2 · Fri 1-2	Express	j7ygs4
Pre-Intermediate Comprehensive Japanese (Listening/Speaking)	C310-L/S	Mon 1-2		zttfnp
	C350-L/S	Mon 1-2 · Thu 1-2	Express	3voh3h5
Pre-Intermediate Japanese Listening Comprehension	L300	Fri 4		cxdsxhf
Pre-Intermediate Japanese Speaking/Conversation	S300	Thu 4		wiysp4t
Pre-intermediate Japanese Reading Comprehension	R300	Wed 5		qjic3yh
Pre-Intermediate Japanese Writing/Composition	W300	Tue 4		lbcx3bc
Pre-Intermediate Japanese Applicative Practice	A350	Tue 4	Express	oetjgeq
Pre-Intermediate Japanese Kanji/Vocabulary	K300	Tue 3 · Fri 3		kouc6jb
	K350	Mon 3 · Tue 3 · Thu 3 · Fri 3	Express	bpgsh3

Pre-Intermediate Co-learning Seminar	JLP course code	The course schedule	Course Code	Google Classroom Code
Japanese Literature in English & Japanese	ML000	Thu 4	CB44207	iwtzh7x

Timetable

	1 8 : 50-10 : 20	2 10 : 30-12 : 00	3 13 : 00-14 : 30	4 14 : 40-16 : 10	5 16 : 20-17 : 50
Mon.	C350-L/S Mr. Choi		K350 Ms. Yokosawa		
	C310-L/S Ms. Yokosawa				
Tue.	C350-R/W Ms. Yokosawa		K350 Ms. Azumi	A350 Ms. Endo	
			K300 Ms. Backley	W300 Ms. Azumi	
Wed.	C320 Ms. Azumi				R300 Mr. Uehara
Thu.	C350-L/S Ms. Kashiwagi		K350 Mr. Choi	S300 Ms. Shukuri	
	C310-R/W Ms. Mikoda			ML000 Ms. M. Mushiake	
Fri.	C350-R/W Ms. Moriwaki		K350 Ms. Endo	L300 Ms. Mikoda	
	C320 Ms. Usui		K300 Ms. Azumi		

※ : Co-learning Seminar(p.7)

Level 4 (Intermediate)

Course Title	JLP course code	The course schedule	Notes	Google Classroom Code
Intermediate Comprehensive Japanese	C420	Wed 1-2 · Fri 1-2		kqmc44
Intermediate Comprehensive Japanese (Reading/Writing)	C410-R/W	Thu1-2	Online class	dpss4t5
Intermediate Comprehensive Japanese (Listening/Speaking)	C410-L/S	Mon 1-2		azd2onv
Intermediate Japanese Listening Comprehension	L400	Fri 4		an7qm2j
Intermediate Japanese Speaking/Conversation	S400	Tue 3		kt46ezq
Intermediate Japanese Reading Comprehension	R400	Mon 4		o4zi3er
Intermediate Japanese Writing/Composition	W400	Tue 1		grfi4s6
Intermediate Japanese Kanji/Vocabulary	K400	Mon 3 · Fri 3		t2fz4x7
Advanced Business Japanese	BJ480	Intensive Class Feb. 10,14,15,16 2 nd – 3 rd class	xupoko@gmail.com Replace * with @. Those who wish to enroll should send an email to the address above by Jan. 13.	peqs4fy
Intermediate Japanese for JLPT N2	N480	Thu 3	Online class	4bhdqjp
Japanese Language and Culture Seminar	NS060	Wed 1	Only Japanese Language & Culture Study Program students	kbssu2r
Research Seminar	RS020	Tue 5		5vs4hyx

Intermediate Co-learning Seminar	JLP course code	The course schedule	Course Code	Google Classroom Code
Language for Controlling People and Media Literacy	CM400	Mon 3	CB13205	x3qk4m7
Japanese Honorific Expressions Useful for University Life	HJ420	Thu 3	CB43209	o5swhwt
Developing Performative Exercises for Japanese Conversation	PE420	Wed 3	CB33260	xi6qit5
Seeing Home Country and Area from Japan	SC420	Fri 3	CB53204	hua7nof
Japanese Literature in English & Japanese	ML000	Thu 4	CB44207	iwtzh7x

Timetable

	1 8 : 50-10 : 20	2 10 : 30-12 : 00	3 13 : 00-14 : 30	4 14 : 40-16 : 10	5 16 : 20-17 : 50
Mon.	C410-L/S Mr. Mori		K400 Ms. Hayashi CM400 Ms. Shukuri	R400 Ms. Yan	
Tue.	W400 Ms. A. Takahashi		S400 Mr. Nakamura		RS020 Mr. Nakamura
Wed.	C420 Ms. Mishima NS060 Mr. Soejima		PE420 Ms. Backley		
Thu.	C410-R/W Ms. Uchiyama		N480 Mr. Seto HJ420 Ms. Hayashi	ML000 Ms. M. Mushiake	
Fri.	C420 Ms. Degura		K400 Ms. Moriwaki SC420 Ms. Mishima	L400 Ms. Shukuri	

※ : Co-learning Seminar(p.7)

Level 5 (Upper-Intermediate)

Course Title	JLP course code	The course schedule	Notes	Google Classroom Code
Upper-Intermediate Comprehensive Japanese	C500	Fri 1-2	Online class	t77ddjy
Upper-Intermediate Japanese Listening Comprehension	L500	Fri 4		neqc4xv
Upper-Intermediate Japanese Speaking/Conversation	S590	Thu 1	General Education : Japanese D-1, D-2 Course code : CB41206, CB41207	y6gih7c
Upper-Intermediate Japanese Reading Comprehension	R500	Mon 4		d4n663a
Upper-Intermediate Japanese Writing/Composition	W500	Tue 4		k2iczp7
Upper-Intermediate Japanese Kanji/Vocabulary	K501	Wed 3		j4burvn
	K502	Wed 4	For students who have Kanji background	zlpxn4z
Upper-Intermediate Japanese for JLPT N1	N580	Wed 3	Online class	7n33qlw
Upper-Intermediate Japanese Culture Seminar: An introduction to Classical Japanese Writings	CJ500	Mon 4		t2llepl
Upper-Intermediate Japanese Culture Seminar: An Introduction to Sino-Japanese Writings	SW500	Tue 5		umesls3
Upper-Intermediate Japanese Culture Seminar: An Introduction to Early Modern Handwritten Sources	HS500	Wed 5		ld2277t
Japanese Language and Culture Seminar	NS060	Wed 1	Only Japanese Language & Culture Study Program students	kbssu2r
Research Seminar	RS020	Tue 5		5vs4hyx

Upper-Intermediate Co-learning Seminar	JLP course code	The course schedule	Course Code	Google Classroom Code
Collaborative Project	CP520	Wed 2	CB32215	rrsfhfo
Intercultural Understanding	IU520	Thu 2	CB42211	uthuyyj
Japanese Culture and Communication	JC520	Mon 3	CB13204	ipccaxw
Japanese Language and Culture in Songs	JS500	Tue 5	CB25208	misjs4f
Language Varieties in Japanese	LV500	Tue 1	CB21204	f3frwye
Playback Theater Workshop : Advanced	PW500	Mon 3	CB13203	7u5gbnx
Liven Up Sendai by Activating the Shopping Streets in Sendai	TC520	Tue 2	CB22210	fwwiaye
Japanese Literature in English & Japanese	ML000	Thu 4	CB44207	iwtzh7x

Timetable

	1 8 : 50-10 : 20	2 10 : 30-12 : 00	3 13 : 00-14 : 30	4 14 : 40-16 : 10	5 16 : 20-17 : 50
Mon.			JC520 Ms. S. Sato PW500 Mr. H. Mushiake	R500 Ms. Yokosawa CJ500 Ms. S. Sato	
Tue.	LV500 Mr. Soejima	TC520 Ms. Watanabe		W500 Ms. S. Sato	RS020 Mr. Nakamura SW500 Mr. Tomono JS500 Mr. Uehara
Wed.	NS060 Mr. Soejima	CP520 Ms. Mino Takahashi	K501 Ms. Hayashi N580 Ms. Hori	K502 Ms. Hayashi	HS500 Mr. Aratake
Thu.	S590 Mr. Soejima	IU520 Ms. Watanabe		ML000 Ms. M. Mushiake	
Fri.	C500 Ms. Mikoda			L500 Mr. Ichinose	

※ : Co-learning Seminar (p.7)

Level 6 (Advanced)

Course Title	JLP course code	The course schedule	Notes	Google Classroom Code
Advanced Japanese Listening Comprehension	L690	Tue 2	General Education : Japanese F-1, F-2 Course code : CB22212, CB22213	3rl4bgj
Advanced Japanese Speaking/Conversation	S690	Thu 2	General Education : Japanese B-1, B-2 Course code : CB42213, CB42214	wep74jf
Advanced Japanese Reading Comprehension	R690	Tue 3	General Education : Japanese J-1, J-2 Course code : CB23208, CB23209	twg74n4
Advanced Japanese Writing/Composition	W690	Thu 3	General Education : Japanese H-1, H-2 Course code : CB43211, CB43212	uuyitta
Advanced Business Japanese	BJ680	Thu 6		gtgnes7
Advanced Japanese Culture Seminar: Pre-modern History and Thoughts in Japan	PH600	Thu 5		bhve4ea
Japanese Language and Culture Seminar	NS060	Wed 1	Only Japanese Language & Culture Study Program students	kbssu2r
Research Seminar	RS020	Tue 5		5vs4hyx

Advanced Co-learning Seminar	JLP course code	Class	The course schedule	Course Code	Google Classroom Code
Buddhism and Japan	JB600		Mon 2	CB12206	fyovnnq
Global Communication	GC680	a	Tue 1	CB21205	vaqbz7k
		b	Tue 3	CB23207	ql4k3x6
Intercultural Communication Studies: Basics	IC600		Mon 5	CB15206	r5vdllb
Intellectual History of Modern Japan	MH600		Thu 2	CB42210	mllqs5t
Critical Thinking and Logical Writing	TW600		Tue 4	CB24211	rab4chm
Japanese Society from an External Viewpoint	SE600		Tue 4	CB24212	vwut7d3
Japanese Literature in English & Japanese	ML000		Thu 4	CB44207	iwtzh7x

Timetable

	1 8 : 50-10 : 20	2 10 : 30-12 : 00	3 13 : 00-14 : 30	4 14 : 40-16 : 10	5 16 : 20-17 : 50	6 18 : 00-19 : 30
Mon.		JB600 Mr. Klautau			IC600 Ms. Yamamoto	
Tue.	GC680a Ms. Yamamoto	L690 Ms. Sugaya	GC680b Ms. Yamamoto R690 Ms. Sugaya	SE600 Mr. Nakamura TW600 Mr. Kushimoto	RS020 Mr. Nakamura	
Wed.	NS060 Mr. Soejima					
Thu.		S690 Ms. Saito MH600 Mr. Morikawa	W690 Ms. Saito	ML000 Ms. M. Mushiake	PH600 Mr. Sonehara	BJ680 Ms. Suzuki
Fri.						

※ : Co-learning Seminar (p.7)

8. Class Schedule by level

Level 1

	Oct.	Nov.	Dec.	Jan.	Feb.
C100a	10/4			1/17	
C100b	10/1			1/25	
C110	10/4			1/17	
C120a•b	10/1			1/21	
C150a•b	10/8		11/29		
B170	10/6			1/26	
M100			12/2	1/25	
R150a•b	10/8		11/30		
A150a•b	10/11		11/22		
H150a•b	10/4	10/7			
K101a	10/4			1/17	
K101b	10/1			1/19	
K102	10/5			1/25	
K151a•b	10/11			1/20	

Level 2

	Oct.	Nov.	Dec.	Jan.	Feb.
C200	10/4			1/13	
C210	10/4			1/20	
C220a•b	10/1			1/19	
C250a	10/4		11/19		
C250b•c			11/30	1/24	
B270	10/6			1/26	
R250a•b			12/3	1/28	
A250a	10/5		11/16		
A250b•c			11/29	1/24	
K201	10/4			1/13	
K202	10/6			1/19	
K250	10/4		11/19		
ML000	10/7			1/20	

Level 3

	Oct.	Nov.	Dec.	Jan.	Feb.
C320	10/8				2/3
C310-R/W	10/7			1/13	
C350-R/W			11/26	1/21	
C310-L/S	10/4			1/17	
C350-L/S			11/29	1/24	
L300	10/1			1/21	
S300	10/7			1/13	
R300	10/6			1/19	
W300	10/12				2/1
A350			11/30	1/18	
K300	10/1			1/18	
K350			11/22	1/18	
ML000	10/7			1/20	

Level 4

	Oct.	Nov.	Dec.	Jan.	Feb.
C420	10/6			1/28	
C410-R/W	10/7			1/13	
C410-L/S	10/4			1/17	
L400	10/1			1/21	
S400	10/5			1/18	
R400	10/4			1/17	
W400	10/5			1/25	
K400	10/4			1/21	
BJ480	Intensive Course : Feb. 10th, 14th, 15th, and 16th				
N480	10/7	11/25			
CM400	10/4			1/24	
HJ420	10/7			1/20	
PE420	10/6			1/26	
SC420	10/1			1/28	
ML000	10/7			1/20	
NS060	10/6			1/26	
RS020	10/5			1/25	

Level 5

	Oct.	Nov.	Dec.	Jan.	Feb.
C500	10/1			1/21	
L500	10/1			1/21	
S590	10/7			1/27	
R500	10/4			1/17	
W500	10/5			1/18	
K501	10/6			1/19	
K502	10/6			1/19	
N580	10/6			12/1	
CP520	10/6			1/26	
IU520	10/7			1/20	
JC520	10/4			1/24	
JS500	10/5			1/25	
LV500	10/5			1/25	
PW500	10/4			1/24	
TC520	10/5			1/25	
CJ500	10/4			1/17	
SW500			12/7		2/1
HS500			12/1		1/26
ML000	10/7			1/20	
NS060	10/6			1/26	
RS020	10/5			1/25	

Level 6

	Oct.	Nov.	Dec.	Jan.	Feb.
L690	10/5				2/1
S690	10/7			1/27	
R690	10/5				2/1
W690	10/7			1/27	
BJ680	10/7			1/20	
JB600	10/4			1/24	
GC680a - b	10/5			1/25	
IC600	10/4			1/24	
MH600	10/7			1/20	
TW600	10/5			1/25	
SE600	10/5			1/25	
PH600	10/7			1/13	
ML000	10/7			1/20	
NS060	10/6			1/26	
RS020	10/5			1/25	

9. Contact Information

Inquiries about Japanese Classes

If you don't know which classes to register, or have problems with your classes, please ask your program coordinator. Please send an inquiry by email first. If you need to meet in person, please make an appointment by email.

Program Name	Coordinator (upper row : main coordinator in charge)	Department/Email Address
Japanese Language Program in general	Associate Professor Masako HAYASHI	Kawauchi Kita Campus, Kawakita Joint Building 519 Email: masako.hayashi.c5 * tohoku.ac.jp
	Associate Professor Wataru NAKAMURA	Kawauchi Kita Campus, Kawakita Joint Building 523 Email: wataru.nakamura.a8 * tohoku.ac.jp
JYPE COLABS	Professor Satoshi UEHARA	Kawauchi Kita Campus, Kawakita Joint Building 520 Email: uehara * he.tohoku.ac.jp
	Professor Natsue SUGAYA	Kawauchi Kita Campus, Kawakita Joint Building 522 Email: natsue.sugaya.e1 * tohoku.ac.jp
IPLA	Associate Professor Wataru NAKAMURA	Kawauchi Kita Campus, Kawakita Joint Building 523 Email: wataru.nakamura.a8 * tohoku.ac.jp
	Senior Assistant Professor Yukiko SHUKURI	Kawauchi Kita Campus, Kawakita Joint Building 518 Email: yukiko.shukuri.a5 * tohoku.ac.jp
Intensive Japanese Language Program	Professor Kensaku SOEJIMA	Kawauchi Kita Campus, Kawakita Joint Building 517 Email: kensaku * tohoku.ac.jp
	Professor Satoshi UEHARA	Kawauchi Kita Campus, Kawakita Joint Building 520 Email: uehara * he.tohoku.ac.jp
Japanese Studies Program	Professor Kensaku SOEJIMA	Kawauchi Kita Campus, Kawakita Joint Building 517 Email: kensaku * tohoku.ac.jp

※ The location of the Kawakita Joint Building is shown on A07 in the Kawauchi Campus Map.

※ Replace * with @ in email addresses.

Inquiries about Official Procedures

Student Exchange Division, International Education Section

Kawauchi Kita Campus Education and Student Support Center, 2F (see A01 in the Kawauchi Campus Map)

Email: sed2*grp.tohoku.ac.jp

(Class Registration, Placement test, etc.)

Japanese Language Program at Kawauchi

Kawauchi Kita Campus International Exchange Building 1F R113 (see A12 in the Kawauchi Campus Map)

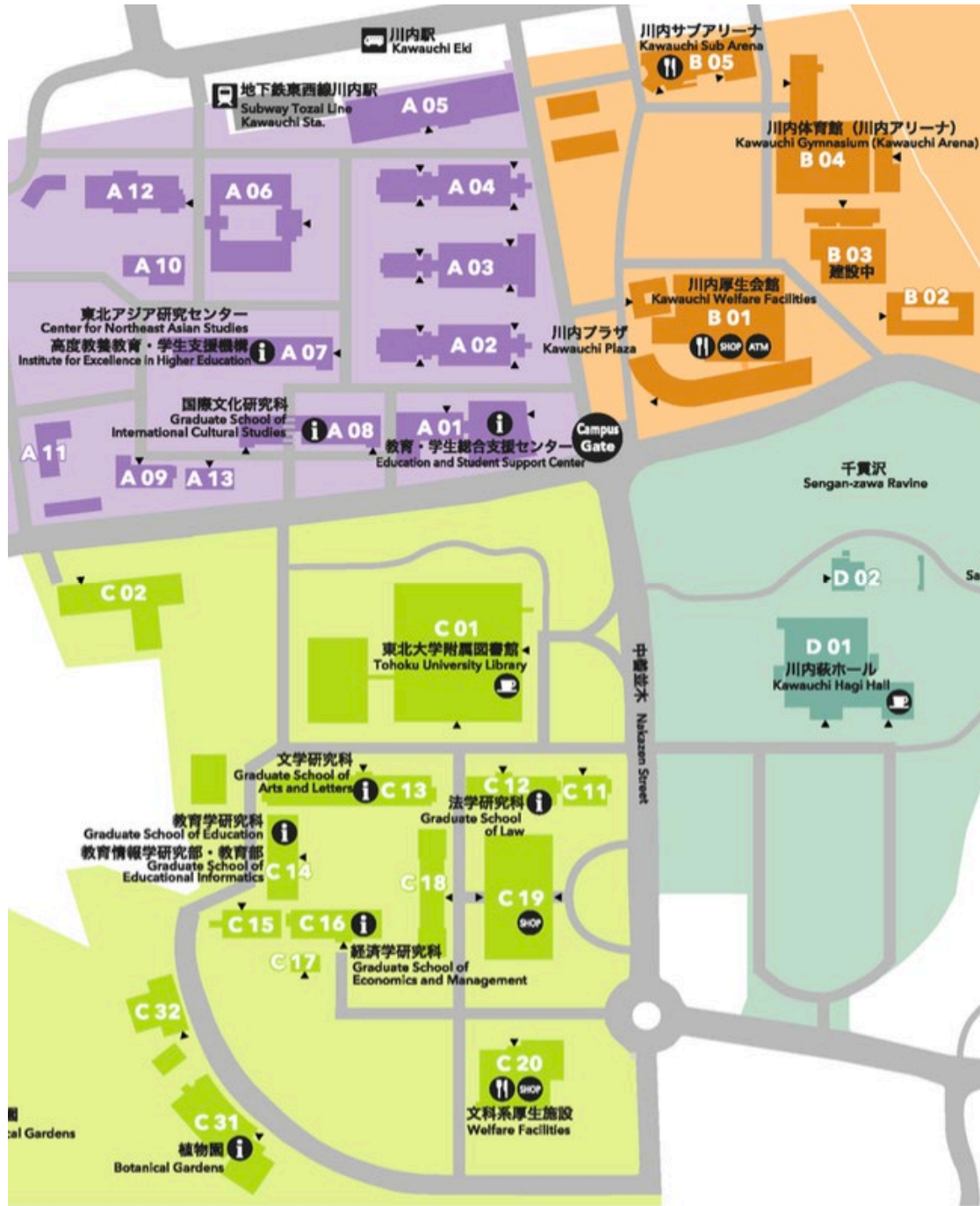
Email: adm-jljk*g-mail.tohoku-university.jp

Note: 1. Replace * with @ in email addresses

2. We cannot respond to inquiries on weekends or holidays.

3. We do not issue hours certificates.

10. Kawauchi Campus Map



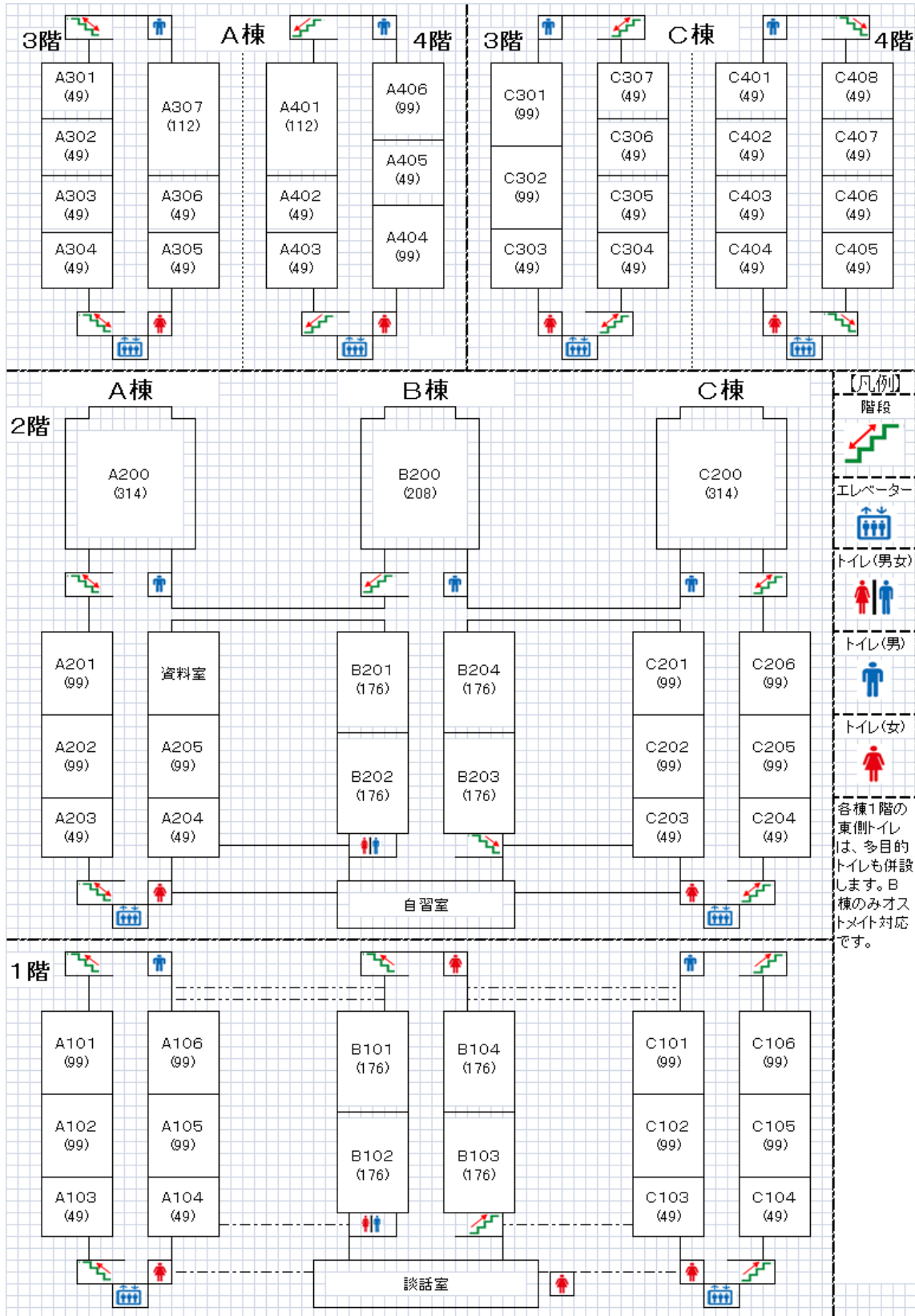
- A 01** 教育・学生総合支援センター
Education and Student Support Center
- A 02** 講義棟A棟
Lecture Rooms A
- A 03** 講義棟B棟
Lecture Rooms B
- A 04** 講義棟C棟
Lecture Rooms C
- A 05** マルチメディア教育研究棟 (教育情報基盤センター)
Multimedia Education and Research Complex (Center for Information Technology in Education)
- A 06** 学生実験棟
Student Laboratories
- A 07** 川北合同研究棟
Kawauchi Research Forum
(高度教養教育・学生支援機構/東北アジア研究センター)
(Institute for Excellence in Higher Education / Center for Northeast Asian Studies)
- A 08** 国際文化研究棟
Graduate School of International Cultural Studies
- A 09** 保健管理センター
Student Health Care Center
- A 10** 教育研究基盤支援棟 4
Education and Research Base Support Building 4
- A 11** 教育研究基盤支援棟 5
Education and Research Base Support Building 5
- A 12** 国際交流棟
International Exchange Building
- A 13** 学生相談所
University Counseling Center

- B 01** 川内厚生会館
Kawauchi Welfare Facilities
- B 02** 川内サークル部室棟
Kawauchi Circle and Club Building
- B 03** 川内課外活動共用施設 (川内ホール)
Kawauchi Extracurricular Activity Shared Facilities (Kawauchi Hall)
- B 04** 川内体育館 (川内アリーナ)
Kawauchi Gymnasium (Kawauchi Arena)
- B 05** 川内サブアリーナ
Kawauchi Sub Arena

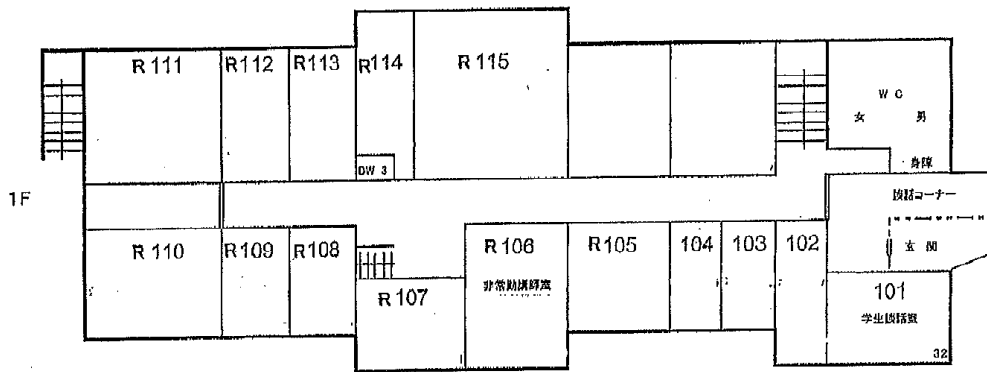
- C 01** 東北大学附属図書館
Tohoku University Library
- C 02** 入試センター
Admission Center
- C 11** 文・法合同研究棟
Arts and Letters / Law Joint Building
- C 12** 法学研究科棟
Graduate School of Law
- C 13** 文学研究科棟
Graduate School of Arts and Letters
- C 14** 文科系総合研究棟 (教育学研究科)
New Humanities Building (Graduate School of Education)
- C 15** 文科系合同研究棟
Graduate School of Economics and Management
- C 16** 経済学研究科棟
Graduate School of Economics and Management
- C 17** 経済学研究科演習室
Seminar Rooms
- C 18** 中講義棟
Lecture Rooms
- C 19** 文科系総合講義棟
Lecture Rooms
- C 20** 文科系厚生施設 (メイプルパーク川内)
Welfare Facilities (Maple Park Kawauchi)

11. Classroom Locations

A, B, and C Classrooms (A02, A03, A04)



International Exchange Building (A12)



Multimedia Education and Research Complex (A05)

