

ATTN: Japanese Language Program at Kawauchi Students

-Due to the COVID-19 pandemic, currently all inquiries for the Student Exchange Division are being conducted by email only.

Please do not telephone or come to the office in person.

We will respond to email as quickly as possible but there may be some delay. We ask for your patience and understanding.

Email: [sed2@grp.tohoku.ac.jp](mailto:sed2@grp.tohoku.ac.jp)

-A Tohoku-dai ID is necessary to take Japanese Language Program classes. If you have not received your ID, please contact your department.

-Please carefully read the Guide on the pages below before registering for classes.

-You must log in to the campus network to register for these classes.

Campus wi-fi

<https://www.dc.tohoku.ac.jp/guide/wifi/wifi-e.html>

VPN service

<https://www.tains.tohoku.ac.jp/contents/remote/vpnstudent.html>

-Access the following URL from the campus network to log in to the academic affairs system and register for classes.

<https://jlpk.bureau.tohoku.ac.jp/entry/>

-For the time being, classes for the Japanese Language Program at Kawauchi will be held online using Google Classroom, excluding some classes for co-learning seminar. We ask all students to please follow the Tohoku University Emergency Action Plan (BCP).

-Please join Classroom using the class codes (see the class guide or class code list) for the classes you want to take.

-Please read the Enrollment Guide, which will be updated as needed, on the Japanese Language Program website.

Japanese Language Program website

<http://www.ihe.tohoku.ac.jp/SJLE/>

Tohoku University Online Class Guide

<https://sites.google.com/view/teleclass-tohoku/forstudents>

Institute for Excellence in Higher Education

Tohoku University

# A Guide to the Tohoku University Japanese Language Program at Kawauchi (Updated May 7, 2021)

First Term, AY 2021

Tohoku University Institute for Excellence in Higher Education

The Institute for Excellence in Higher Education offers the Japanese Language Program for International Students to improve the Japanese language proficiency of foreign students and researchers at Tohoku University, and other universities in Sendai. We hope that it will facilitate your everyday activities and research. There are a variety of classes, from beginner to advanced levels, so you can study at the Japanese level appropriate for you.

## Table of Contents

1. Application/Class Registration
2. Notes on Attending Class
3. Orientation video
4. Level and Subject Codes
5. Grading and Progression System
6. Eligibility for Classes
7. Subjects and Timetable by Level
8. Class Schedule by level
9. Contact Information
10. Kawauchi Campus Map
11. Classroom Locations

The majority of JLPK classes will be conducted online using Google Classroom, excluding some classes for co-learning seminar.

**Program Term**

**April 12 (Mon.) to August 10 (Tue.)**

The schedule may change due to the novel coronavirus pandemic. We ask for your understanding and cooperation.

**Application/Class Registration Schedule**  
**BE SURE TO REGISTER DURING THE REGISTRATION PERIOD!**

**First Semester: April 12 (Mon.) through August 10 (Tue.)**

Application Period: March 16 (Tue.) - April 21 (Wed.)

Registration Period: April 22 (Thu.) - May 6 (Thu.)

**2nd Quarter: June 10 (Thu.) through August 10 (Tue.)**

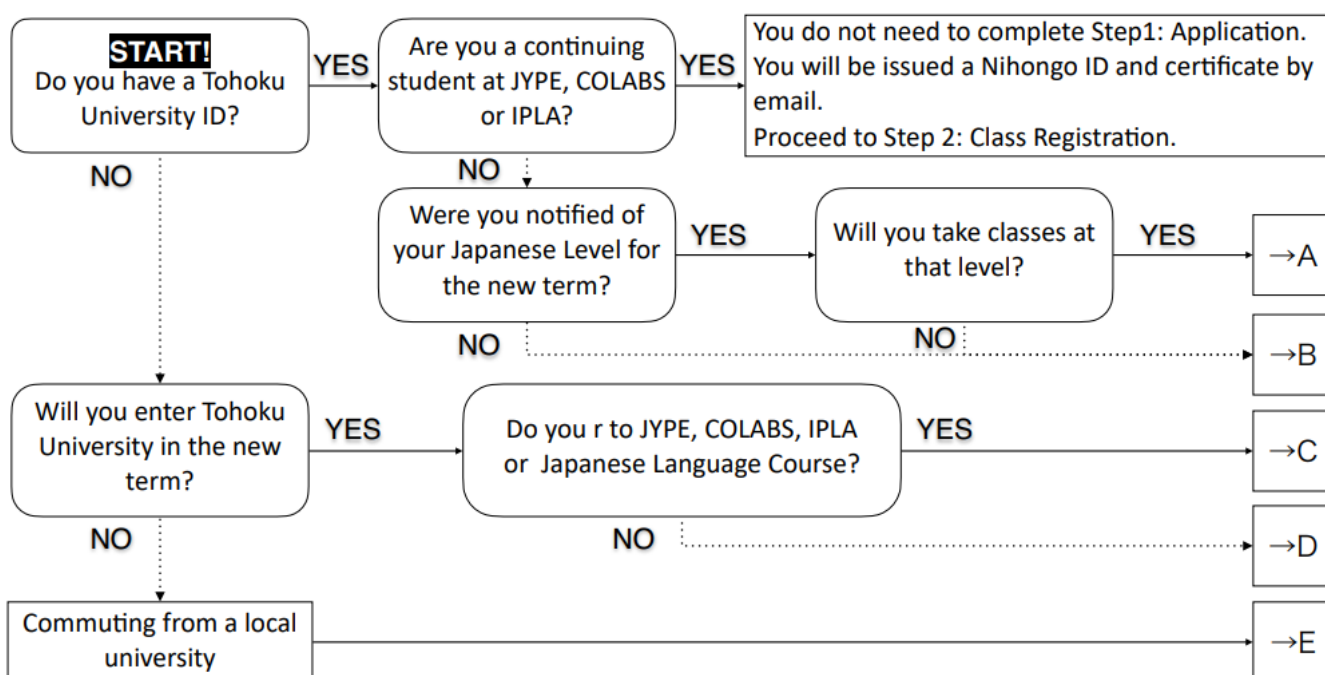
Application Period for Half-Term Classes (Second Part of Term):

May 25 (Tue.) – June 1 (Tue.)

Registration Period for Half-Term Classes (Second Part of Term):

June 2 (Wed.) - June 9 (Wed.)

**1. Application/Class Registration**



**You must submit an application even if you applied during the previous term!**

**Step 1: Application**

**A (enrolled at TU, have an assigned Japanese level, will not take the PT):**

- (1) Log in to the academic affairs system from the on-campus network to apply for classes.  
 URL: <https://jlpk.bureau.tohoku.ac.jp/entry/>  
 \*Please be sure to register your Nihongo ID from the previous term and password with the system.  
 \*Applications are accepted from March 16 to April 21.  
 \*Applications for classes taught in the latter half of the term are accepted from May 25 to June 1.
- (2) You will receive a Nihongo ID and Excel file by email. The Excel file is for those who are taking the placement test, so you need not submit it.
- (3) Later, you will be sent a certificate showing your Japanese level for the new term.
- (4) After the term starts, please perform Step 2.

### **B-1 (enrolled at TU, beginner, will not take the PT):**

- (1) Log in to the academic affairs system from the on-campus network to apply for classes.  
URL: <https://jlpk.bureau.tohoku.ac.jp/entry/>
  - \*Please be sure to choose “beginner” at the question 12 on the system.
  - \*Applications are accepted from March 16 to April 21.
  - \*Applications for classes taught in the latter half of the term are accepted from May 25 to June 1.
- (2) You will receive a Nihongo ID by email. Please complete the preparatory assignment on the website below before the start of classes.  
URL: <http://www.he.tohoku.ac.jp/SJLE/kana/>
- (3) Later, you will receive a Level 1 (beginner) certificate.
- (4) After the term starts, please perform Step 2.

### **B-2 (enrolled at TU, studied Japanese before, will take the PT):**

- (1) Log in to the academic affairs system from the on-campus network to apply for classes.  
URL: <https://jlpk.bureau.tohoku.ac.jp/entry/>
  - \* If you have a Nihongo ID and password from the previous term, please be sure to register them with the system.
  - \*Applications are accepted from March 16 to April 21.
  - \*Applications for classes taught in the latter half of the term are accepted from May 25 to June 1.
- (2) You will receive a Nihongo ID and Excel file by email. You will also be provided a link to information on the placement test.
- (3) Take the online placement test.
- (4) Enter your test results in the Excel file and send it to the provided email address.
- (5) You will be sent a certificate showing your Japanese level. If you were notified of a level for the new term, but also have a level determined by your test result, your level will be whichever is higher.
- (6) After the term starts, please perform Step 2.

### **C-1 (not yet enrolled at TU, beginner, participating in the above programs, will not take the PT):**

- (1) You will receive a Nihongo ID by email. Please complete the preparatory assignment on the website below before the start of classes.  
URL: <http://www.he.tohoku.ac.jp/SJLE/kana/>
- (2) Later, you will receive a Level 1 (beginner) certificate.
- (3) After entering TU, please perform Step 2.

### **C-2 (not yet enrolled at TU, studied Japanese before, participating in the above programs, will take the PT):**

- (1) You will receive a Nihongo ID and Excel file by email. You will also be provided a link to information on the placement test.
- (2) Take the online placement test.
- (3) Enter your test results on the Excel file and send it to the provided email address.
- (4) You will be sent a certificate showing your Japanese level.
- (5) After entering TU, please perform Step 2.

### **D-1 (not yet enrolled at TU, beginner, general, will not take the PT):**

- (1) After entering TU, log in to the academic affairs system from the on-campus network to apply for classes.  
URL: <https://jlpk.bureau.tohoku.ac.jp/entry/>
  - \*Please be sure to choose “beginner” at the question 12 on the system.
  - \*Applications are accepted from March 16 to April 21.
  - \*Applications for classes taught in the latter half of the term are accepted from May 25 to June 1.
- (2) You will receive a Nihongo ID by email. Please complete the preparatory assignment on the website below before the start of classes.  
URL: <http://www.he.tohoku.ac.jp/SJLE/kana/>
- (3) Later, you will receive a Level 1 (beginner) certificate.
- (4) Please perform Step 2.

## D-2 (not yet enrolled at TU, studied Japanese before, general, will take the PT):

- (1) After entering TU, log in to the academic affairs system from the on-campus network to apply for classes.  
URL: <https://jlpk.bureau.tohoku.ac.jp/entry/>  
\*Applications are accepted from March 16 to April 21.  
\*Applications for classes taught in the latter half of the term are accepted from May 25 to June 1.
- (2) You will receive a Nihongo ID and Excel file by email. You will also be provided a link to information on the placement test.
- (3) Take the online placement test.
- (4) Enter your test results in the Excel file and send it to the provided email address.
- (5) You will be sent a certificate showing your Japanese level.
- (6) Please perform Step 2.

## E (not affiliated with TU, will take the PT):

- (1) Send an email to the below address, informing us of your desire to take classes in the Japanese Language Program.

Address: [jlpk@g-mail.tohoku-university.jp](mailto:jlpk@g-mail.tohoku-university.jp)

\*Applications are accepted from March 16 to April 21.

\*Applications for classes taught in the latter half of the term are accepted from May 25 to June 1.

\*If you are unable to create a Tohoku University ID (Tohoku University email address), you will not be able to take online classes.

- (2) You will receive a survey by email.
- (3) Enter your answers on the survey form and return it by email.
- (4) You will receive a Nihongo ID and Excel file by email. You will also be provided a link to information on the placement test.
- (5) Take the online placement test.
- (6) Enter your test results on the Excel file and send it to the provided email address.
- (7) If you are rated Level 2 (basic) or higher, you will be issued a Nihongo ID and certificate by email.
- (8) Please perform Step 2.

### Step 2: Class Registration

- (1) Please join classes suitable for your level; if you wish to register after attending the first class, show your certificate and ask for the instructor's permission.  
\*Class sizes are limited. Students will be accepted on a first-come basis.  
\*Some classes preferentially accept students from certain programs.
- (2) Please join the Google Classrooms for the classes you are taking. Please do this even for classes held on campus.
- (3) Log in to the academic affairs system and register your classes using the class registration screen.  
URL: <https://jlpk.bureau.tohoku.ac.jp/student/login.php>
  - ※ You will only be able to register only classes for which you have received permission from the instructors.
  - ※ IPLA students will be informed about registration in a separate email. Do NOT register with the above system.
  - ※ Class registrations are accepted from April 22 to May 6.
  - ※ Registrations for classes taught in the latter half of the term are accepted from June 2 to June 9.

\*Courses in the latter half of the term

	JLP course code
Level 1 (Beginner)	M100
Level 2 (Basic)	C250b, R250
Level 3 (Pre-intermediate)	A350, G/R350, G/W350, G/L350, G/S350, K350
Level 4 (Intermediate)	BJ480 (Intensive Class)
Level5 (Upper-Intermediate)	HS500 (Intensive Class)

## 2. Notes on Attending Class

1. Be sure to register for classes. If you do not, you will not be able to take classes offered by this program.
2. You cannot register for classes after the deadline (May 6).
  - ※ The deadline to register for classes taught in the latter half of the term is June 9.
3. Students enrolled at universities in and around Sendai are eligible to take classes. Relatives etc. of international students are not eligible to attend classes.
  - ※ Those enrolled in universities other than Tohoku University are eligible to take classes if they are Level 2 or higher.
4. Read the syllabus before registering for classes to learn about class goals, content, and how performance is evaluated.

**Syllabus:** <http://www.he.tohoku.ac.jp/SJLE/syllabi/>

(after April 19)

5. Please purchase your textbooks at the bookstore in the Kawauchi Campus Welfare Facilities (see B01 in the Kawauchi Campus Map). Using copied textbooks (paper photocopies, or digital copies downloaded from the Internet) in class is forbidden. Students using such copies will not be permitted to attend class. Making illegal copies of copyrighted materials is forbidden under Japanese law.
6. Class sizes are limited. Students will be accepted on a first-come basis, so you may not be able to take all your first-choice classes.

Intensive Learning Classes up to Pre-intermediate (excluding H150 and K151), SC420, NS060, RS020	Limit: 10
C100, C110, C120, M100, H150, C200, C210, C220, BJ480, N480, CC420, FT420, MM420, PE420, L500, N580, DU500, HF520, JF520, JL500, JM500, ML500, PW500, HS500, PA500, L690, S690, R690, W690, BJ680, GC680, MH600, PL600, BM600	Limit: 15
K151, K101, K102, C320, C420, S590	Limit: 20
Other	Limit: 25

7. If you must be absent from class, inform the instructor directly or via a classmate. If you do not attend at least two-thirds of the total number of classes, you will receive a "D" (fail).
8. Failure to follow the above rules may result in losing eligibility to attend classes in this program.

## 3. Orientation video

The video below contains instructions to guide you through enrollment, from basic registration to signing up for classes. Please watch it.

<http://www.he.tohoku.ac.jp/SJLE/video/>

## 4. Level and Subject Codes

1. Japanese levels are numbered 1 through 6. Attainment goals are shown in the below table.

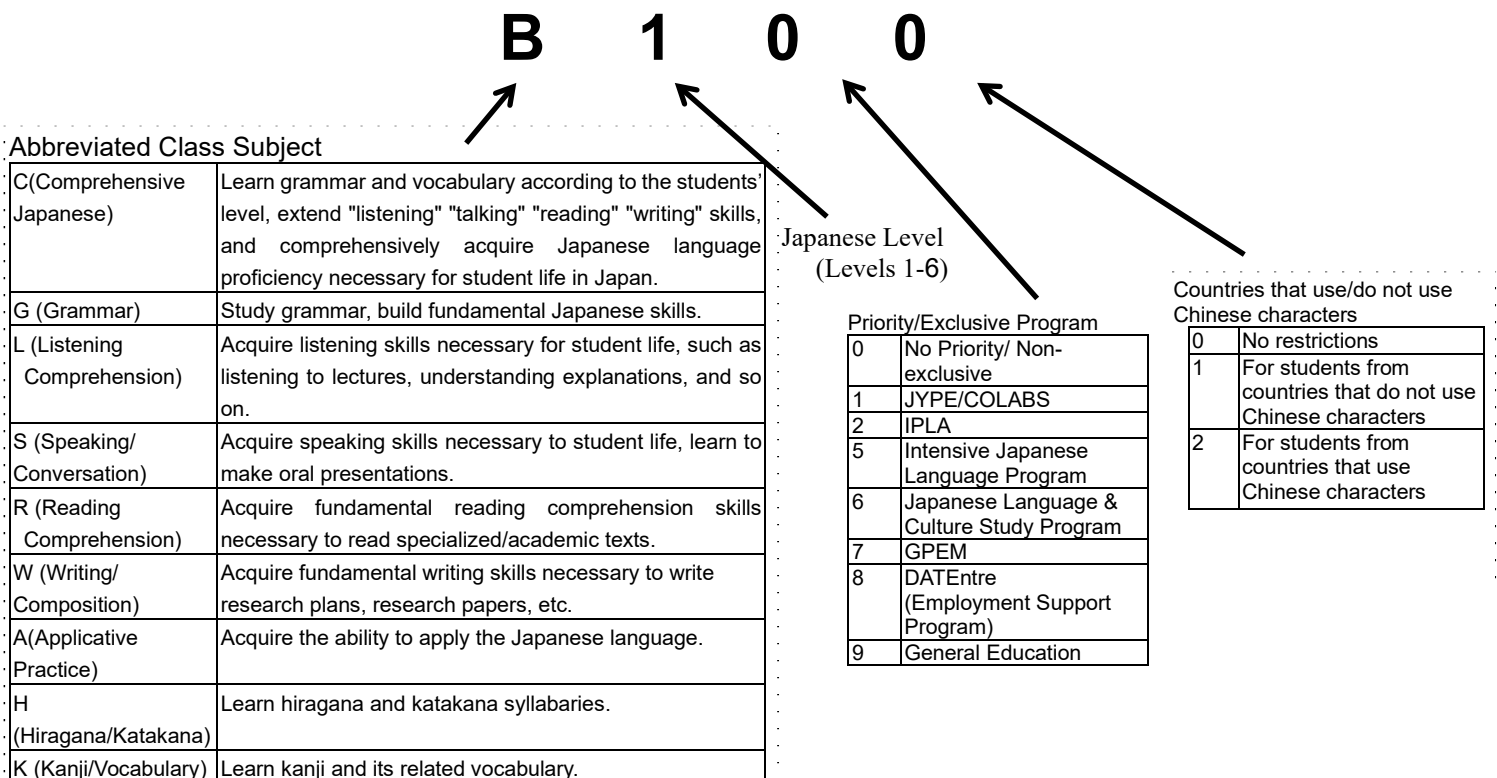
	Attainment Goals	
	CEFR/JFS	JLPT
Level 1 (Beginner)	Students will acquire conversation, reading, and writing abilities necessary for daily life.	A1 N5
Level 2 (Basic)	Students will acquire speaking, listening, reading, and writing abilities for a variety of everyday situations.	A2.1 N4
Level 3 (Pre-intermediate)	Students will acquire basic Japanese skills needed for student life and attending university classes in Japan.	A2.2 N3
Level 4 (Intermediate)	Students will acquire skills needed to read articles and essays on familiar topics of interest and write simple reports. They will also learn to listen to lectures and express their own opinions in Japanese.	B1 N2
Level 5 (Upper-Intermediate)	Students will acquire Japanese skills needed to read academic texts, write reports, listen to lectures, and make presentations.	B2 N1
Level 6 (Advanced)	Students will acquire Japanese skills needed to understand specialized academic texts, write reports, listen to lectures related to their majors, and give seminar presentations.	C1

CEFR: Common European Framework of Reference for Languages

JFS: JF Standard for Japanese-Language Education

JLPT: Japanese Language Proficiency Test

2. Please see below for an explanation of Subject Codes.



## 5. Grading and Progression System

1. The grading scale for this program is as follows.

AA	Particularly excellent (90-100 points).
A	Excellent (80-89 points).
B	Good (70-79 points).
C	Passed (60-69 points).
D	Failed (0-59 points).
E	Withdrew from the class.

- ※ You will be notified of your grades at the end of each term. Upon request, your academic advisor can be notified of your grades too.
- ※ If you wish to withdraw from a class, contact the class's instructor. JYPE, COLABS, and IPLA students should contact the Student Exchange Division. If you stop attending class without withdrawing, you will receive a "D."
- ※ Deadlines for dropping classes are as follows.  
Term-long Classes: May 31  
Half-term Classes (first part of the term): May 10  
Half-term Classes (second part of the term): June 25
- ※ You will also receive a "D" if you do not attend at least two-thirds of the total number of classes.
- ※ If you require an Academic Report (Rishuu Shoumeisho), please ask for it at the International Education Section of the Student Exchange Division (p.16).
- ※ In general, only JYPE, COLABS, and IPLA students receive credit for classes registered in the Japanese Language Program; other students will not receive credit. However, some departments may approve credits for these classes. For details, inquire with the relevant staff at your department.

2. This program's progression system is as follows.

### JYPE(Level 1-2), COLABS(Level 1-2), and IPLA(Level 1-2) Students

If you obtain a C or better, and your credits are approved, you may proceed to the next difficulty level the following term.

### Students in Intensive Learning Classes

If you obtain a grade of "A" or better in C150 or C250, you may take classes that are one difficulty level higher than your current level in the second half of the term. If you obtain a grade of "B" or "C" in C150 or C250, you may proceed to the next "Tentative" difficulty level in the second half of the term.

### Other students

If you fulfill the conditions indicated on the table below, you may proceed to the next difficulty level the following term without taking a placement test.

Current Term	Conditions	Following Term
Level 1	Obtain an "AA" or "A" grade in both C1 and K1.	→Level 2
Level 2	Obtain an "AA" or "A" grade in both C2 and K2.	→Level 3
Level 3	1. Obtain an "AA" or "A" grade in C3 or C4. 2. Obtain 2 "AA" or "A" grades in both C-L/S or C-R/W and another Level 3 or 4 course. ※1	→Level 4
Level 4	or 3. Obtain more than 3 "AA" or "A" grades in Level 3 or 4 courses other than C3, C4, L/S or R/W. ※1 ※2	→Level 5
Level 5	1. Obtain 2 "AA" or "A" grades in both C5 and another level 5 course, ※1 or 2. Obtain more than 3 "AA" or "A" grades in level 5 courses other than C5. ※1 ※2	→Level 6

※1 Except the grades of Kanji classes

※2 Obtaining 2 "B" grades is considered equal to obtaining an "A"



## 6. Eligibility for Classes

Classes that can be taken at each level are as follows.

- ※ If your level is marked "Tentative," you may register for classes both at your tentative level, and one level below. (E.g. if you are "Level 4 (Tentative)," you may register for both Level 4 and Level 3 classes at the same time.)
- ※ If you are a JYPE, COLABS, or IPLA student you must register for classes either in your tentative level, or one level below. You cannot register for classes both at your tentative level and one level below at the same time. (E.g. if you are "Level 4 (Tentative)," you must choose whether to register for Level 3 classes or Level 4 classes.)

2. Levels		Comprehensive	Listening	Speaking	Reading	Writing	Application/ Practical	Kana	Miscellaneous
1	1 (Tentative)	C100, C110, C120, C150, M100			R150		A150	H150	
2	2 (Tentative)	C200, C210, C220, C250a, C250b			R250		A250a, A250b		
3	3 (Tentative)	C310-L/S, C310-R/W, C320	L300, G/L350	S300, G/S350	R300, G/R350	W300, G/W350	A350		
4	4 (Tentative)	C410-L/S, C410-R/W, C420	L400	S400	R400	W400			N480, BJ480, CC420, FT400, MM420, PE420, SC420, RS020, NS060*
5	5 (Tentative)	C500	L500	S590	R500	W500			BJ480, MM420, N580, DU500, HF520, JF520, JL500, JM500, ML500, PW500, HS500, PA500, RS020, NS060*
6	6 (Tentative)		L690	S690	R690	W690			DU500, HF520, JF520, JL500, JM500, ML500, PW500, HS500, PA500, BJ680, GC680, MH600, PL600, BM600, CL600, RS020, NS060*

1. Classes marked with an asterisk (\*) are exclusively for that program's students. Students from other programs cannot take those classes.
2. You cannot take 2 or more classes whose codes begin with the same letter (e.g. C210 and C220, R400 and R500 etc.). Also, you cannot simultaneously take C classes with C-L/S or C-R/W classes (However, we recommend taking C-L/S and C-R/W simultaneously. you can simultaneously take C-L/S with S or L classes, and C-R/W with R or W classes).
3. You must attend every session of class even if the class meets two or more times each week.
4. If you are a JYPE, COLABS, or IPLA student continuing from the previous term, and your certificate is marked "J only" (e.g. J3only, J2only, etc.) you may register only for the designated "Japanese" classes in your exchange program and a Kanji class.
5. If a two-letter code appears in the "Other" section, the class is a seminar. These are International Co-learning Seminars, except for classes marked BJ, CL, HS, PA, RS and NS. International and Japanese students take International Co-learning Seminars together. They participate in discussions and cooperative projects to deepen their intercultural understanding. Special auditing students, non-degree students, undergraduate students, and graduate students can receive credit for International Co-learning Seminars if they register them as General Education subjects. For further details, inquire with your department's Academic Affairs Section.
6. For kanji classes, please select just one class at your designated level, or one level below or above that level. (E.g. If your level is "K2," select one class at level K1, K2, or K3.) However, if the instructor does not give permission, you cannot take the class
7. APRU VSE students can take the following classes only: C100, C200, C310-R/W, C410-R/W, N480 and N580.

Kanji Level	Kanji
K1	K101, K102, K151
K2	K201, K202, K250
K3	K300, K350
K4	K400
K5	K501, K502

## 7. Subjects and Timetable by Level

### Level 1(Beginning)

Course Title	JLP course code	Course Schedule	Notes	Google Classroom Code
Beginning Comprehensive Japanese	C100	Wed 4-5 · Fri 4-5	Online class	hl3q67y
	C110	Mon 1-2 · Wed 1-2		pusiifj
	C120	Wed 1-2 · Fri 1-2		5xiel2s
	C150	Mon 1-2 · Tue 1-2 · Thu 1-2 · Fri 1-2	Express	7hv3fm4
Minimal Japanese	M100	Tue 4-5 · Thu 4-5		dejknjdj
Beginning Japanese Reading Comprehension	R150	Tue 3 · Fri 3	Express	esalqzq
Beginning Japanese Applicative Practice	A150	Tue 4	Express	7vxexxr
Hiragana/Katakana	H150	4/12 – 4/15		72nswjo
Beginning Japanese Kanji/Vocabulary	K101	Mon 3 · Wed 3		soyudzl
	K102	Tue 3	For Students who have Kanji background	pfddnqc
	K151	Mon 3 · Thu 3		badm3hd

Timetable① Course code Class Instructor

	1 8 : 50- 10 : 20	2 10 : 30- 12 : 00	3 13 : 00- 14 : 30	4 14 : 40- 16 : 10	5 16 : 20- 17 : 50
Mon.	C150 Ms. Usui		K151 Ms. Mikoda		
	C110 Ms. Mishima		K101 Ms. Mishima		
Tue.	C150 Ms. Kikuchi		R150 Ms. Hayashi	A150 Mr. Uehara	
			K102 Ms. Shukuri	M100 Ms. Abe	
Wed.	C110 Ms. M. Takahashi		K101 Ms. Kashiwagi	C100 Ms. Usui	
	C120 Ms. Backley				
Thu.	C150 Ms. Shukuri		K151 Ms. Kashiwagi	M100 Mr. Choi	
Fri.	C150 Mr. Choi		R150 Ms. Usui	C100 Ms. M. Takahashi	
	C120 Ms. Azumi				

Timetable②: H150

3days intensive course to master Hiragana and Katakana

	1 8:50 ~ 10:20	2 10:30 ~ 12:00	3 13:00~ 14:30
Apr. 12 Mon.	Ms. Usui		Ms. Mikoda
Apr. 13 Tue.	Ms. Kikuchi		Ms. Hayashi
Apr. 15 Thu.	Ms. Shukuri		Mr. Kashiwagi

## Level 2(Basic)

Course Title	JLP course code	Class	Course Schedule	Notes	Google Classroom Code
Basic Comprehensive Japanese	C200		Mon 4-5•Thu 4-5	Online class	htxz2fl
	C210		Mon 1-2•Wed 1-2		qzetaiy
	C220		Wed 1-2•Fri 1-2		y6leapy y6lorpy
	C250	a	Mon 1-2•Tue 1-2• Thu 1-2•Fri 1-2	Express A and b will provide the same contents. (same below)	uavhwrf
		b	Mon 1-2•Tue 1-2• Thu 1-2•Fri 1-2	Express	2afn4l6
Basic Japanese Reading Comprehension	R250		Tue 3•Fri 3	Express	d3tcfjx
Basic Japanese Applicative Practice	A250	a	Tue 4	Express	7gpyv46
		b	Tue 4	Express	znqpghb
Basic Japanese Kanji/Vocabulary	K201		Mon 3•Thu 3		7d54iyg
	K202		Wed 3	For Students who have Kanji background	ktw66zc
	K250		Mon 3•Tue 3• Thu 3•Fri 3	Express	bc7gavm

### Timetable

	1 8 : 50-10 : 20	2 10 : 30-12 : 00	3 13 : 00-14 : 30	4 14 : 40-16 : 10	5 16 : 20-17 : 50
Mon.	C250a Mr. Choi		K250 Ms. Yokosawa	C200 Mr. Choi	
	C250b Ms. Usui				
	C210 Ms. Seki		K201 Ms. Ohori		
Tue.	C250a Ms. Yokosawa		R250 Ms. Hayashi	A250a Ms. Endo	
	C250b Ms. Kikuchi		K250 Ms. Abe	A250b Mr. Uehara	
Wed.	C210 Ms. Suzuki		K202 Ms. Mishima		
	C220 Ms. Kashiwagi				
Thu.	C250a Ms. Uchiyama		K250 Mr. Choi	C200 Ms. Suzuki	
	C25 b Ms. Shukuri		K201 Ms. Azumi		
Fri.	C250a Ms. Moriwaki		R250 Ms. Usui		
	C250b Mr. Choi		K250 Ms. Endo		
	C220 Ms. Backley				

### Level 3 (Pre- Intermediate)

Course Title	JLP course code	Course Schedule	Notes	Google Classroom Code
Pre-Intermediate Comprehensive Japanese	C320	Wed 1-2•Fri 1-2		mnsfguu
Pre-Intermediate Comprehensive Japanese (Reading/Writing)	C310-R/W	Wed 1-2	Online class	i6n46do
Pre-Intermediate Comprehensive Japanese (Listening/Speaking)	C310-L/S	Mon 1-2		z5xzhk5
Pre-Intermediate Japanese Grammar/Reading	G/R350	Tue 1•Fri 1	Express	sn72tjl
Pre-Intermediate Japanese Grammar/Writing	G/W350	Tue 2•Fri 2	Express	v7f4lcd
Pre-Intermediate Japanese Listening Comprehension	L300	Fri 4		liae46h
Pre-Intermediate Japanese Grammar /Listening	G/L350	Mon 1•Thu 1	Express	b65n2jo
Pre-Intermediate Japanese Speaking/Conversation	S300	Thu 4		s5fn2au
Pre-Intermediate Japanese Grammar /Speaking	G/S350	Mon 2•Thu 2	Express	mcivv5d
Pre-Intermediate Japanese Reading Comprehension	R300	Tue 1		6kifpki
Pre-Intermediate Japanese Writing/Composition	W300	Tue 4		hknylvz
Pre-Intermediate Japanese Applicative Practice	A350	Tue 4		6m6aiq6
Pre-Intermediate Japanese Kanji/Vocabulary	K300	Tue 3•Fri 3		2vjfp7a
	K350	Mon 3•Tue 3•Thu 3•Fri 3	Express	nvwjxs6

### Timetable

	1 8 : 50-10 : 20	2 10 : 30-12 : 00	3 13 : 00-14 : 30	4 14 : 40-16 : 10	5 16 : 20-17 : 50
Mon.	G/L350 Mr. Choi C310-L/S Ms. Yokosawa	G/S350 Mr. Choi	K350 Ms. Yokosawa		
Tue.	G/R350 Ms. Yokosawa R300 Mr. Uehara	G/W350 Ms. Yokosawa	K350 Ms. Abe K300 Ms. Backley	A350 Ms. Endo W300 Ms. Azumi	
Wed.	C320 Ms. Azumi C310-R/W Ms. Mikoda				
Thu.	G/L350 Ms. Uchiyama	G/S350 Ms. Uchiyama	K350 Mr. Choi	S300 Ms. Shukuri	
Fri.	G/R350 Ms. Moriwaki C320 Ms. Usui	G/W350 Ms. Moriwaki	K350 Ms. Endo K300 Ms. Azumi	L300 Ms. Azumi	

## Level 4 (Intermediate)

Course Title	JLP course code	Course Schedule	Notes	Google Classroom Code
Intermediate Comprehensive Japanese	C420	Wed 1-2・Fri 1-2		qswggx6
Intermediate Comprehensive Japanese (Reading/Writing)	C410-R/W	Wed 1-2	Online Class	dltktql
Intermediate Comprehensive Japanese (Listening/Speaking)	C410-L/S	Mon 1-2		z3tspf1
Intermediate Japanese Listening Comprehension	L400	Fri 4		wulfakh
Intermediate Japanese Speaking/Conversation	S400	Thu 4		eq5kdxs
Intermediate Japanese Reading Comprehension	R400	Mon 4		ceawlx6
Intermediate Japanese Writing/Composition	W400	Tue 1		25g7kkj
Intermediate Japanese Kanji/Vocabulary	K400	Tue 5・Fri 3		y5tsw3i
Intermediate Business Japanese	BJ480	Intensive Summer Class 8/20-8/25	First class: 8/20, 10:30-14:30 xupoko@gmail.com Replace * with @. Those who wish to enroll should send an email to the address above by July 1.	ekatsu6
Intermediate Japanese for JLPT N2	N480	Thu 3	Online Class	ymz7nes
Japanese Language and Culture Seminar	NS060	Wed 1	Only Japanese Language & Culture Study Program students	gbdd525
Intermediate Research Seminar	RS020	Tue 3		wb6z4mr

Intermediate Co-learning Seminar	JLP course code	Course Schedule	Course Code	Google Classroom Code
Cross-cultural Communication	CC420	Tue 3	CB23107	bvs5vjd
Funny Talks and Language	FT400	Wed 4	CB34109	qmt7qnr
Multimedia Based Mutual Language and Culture Understanding Through Manga and Anime	MM420	Mon 3	CB00150	dsekix6
Developing Performative Exercises for Japanese Conversation	PE420	Wed 3	CB33112	ocfiar6
Seeing Home Country and Area from Japan	SC420	Fri 4	CB54105	rmdqhvo

### Timetable

	1 8 : 50-10 : 20	2 10 : 30-12 : 00	3 13 : 00-14 : 30	4 14 : 40-16 : 10	5 16 : 20-17 : 50
Mon.	C410-L/S Mr. Mori		MM420 Ms. Hayashi	R400 Ms. Yan	
Tue.	W400 Ms. A. Takahashi		CC420 Ms. Suematsu RS020 Mr. Nakamura		K400 Ms. Hayashi
Wed.	C420 Ms. Degura C410-R/W Ms. Uchiyama NS060 Mr. Soejima		PE420 Ms. Backley	FT400 Ms. Shukuri	
Thu.			N480 Mr. Seto	S400 Ms. Azumi	
Fri.	C420 Ms. Mishima		K400 Ms. Moriwaki	L400 Ms. Mikoda SC420 Ms. Mishima	

※   : Co-learning Seminar(p.7)

## Level 5 (Upper-Intermediate)

Course Title	JLP course code	Course Schedule	Notes	Google Classroom Code
Upper-Intermediate Comprehensive Japanese	C500	Fri 1-2	Online Class	lgtm4wn
Upper-Intermediate Japanese Listening Comprehension	L500	Fri 4		a4w5pt2
Upper-Intermediate Japanese Reading Comprehension	R500	Tue 5		faesjjj
Upper-Intermediate Japanese Speaking/Conversation	S590	Thu 1	General Education: Japanese: C-1, C-2 Course Code: CB41112, CB41113	ya2rhce, v2qwvbw
Upper-Intermediate Japanese Writing	W500	Thu 4		e4p2s55
Upper-Intermediate Japanese Kanji/Vocabulary	K501	Wed 3		ommkxev
	K502	Wed 4		u4q3nat
Upper-Intermediate Japanese for JLPT N1	N580	Wed 3	Online Class	rhlj4lx
Upper-Intermediate Japanese Culture Seminar: An Introduction to Early Modern Handwritten Sources	HS500	Intensive Summer Class 8/23-8/26	First class: 8/23, 8:50-16:10 kenichiro.aratake.c2*tohoku.ac.jp Replace * with @. Those who wish to enroll should send an email to the address above by July 1.	gs43pc6
Upper-intermediate Research Seminar: Practical Japanese for Academic Research	PA500	Tue 2		kcrotun
Japanese Language and Culture Seminar	NS060	Wed 1	Only Japanese Language & Culture Study Program students	gbdd525
Upper-Intermediate Research Seminar	RS020	Tue 3		wb6z4mr

Upper-Intermediate Co-learning Seminar	JLP course code	Course Schedule	Course Code	Google Classroom Code
Deepening One's Understanding of Oneself and Others	DU500	Wed 5	CB35102	uyp2663
Modern Japanese History in Film	HF520	Tue 5	CB25114	nj4jopc
Japanese Language and Culture in Film	JF520	Mon 4	CB00149	scs3c5g
Japanese Language in Contrast	JL500	Wed 2	CB32113	hmf4a46
Japanese Language and Culture in Movies	JM500	Tue 4	CB24115	qr3jst2
Japanese Modern Literature	ML500	Thu 4	CB44109	byhqjaz
Playback Theater Workshop : basic	PW500	Mon 3	CB00036	sv7y5xf

### Timetable

	1 8 : 50-10 : 20	2 10 : 30-12 : 00	3 13 : 00-14 : 30	4 14 : 40-16 : 10	5 16 : 20-17 : 50
Mon.			PW500 Mr. Mushiake	JF520 Mr. Soejima	
Tue.		PA500 Ms. Sugaya	RS020 Mr. Nakamura	JM500 Mr. Nakamura	R500 Mr. Nakamura
					HF520 Mr. Klautau
Wed.	NS060 Mr. Soejima	JL500 Mr. Uehara	N580 Ms. Hori	K502 Ms. Hayashi	DU500 Ms. Kojima
			K501 Ms. Hayashi		
Thu.	S590 Mr. Soejima			W500 Ms. S. Sato	
				ML500 Ms. M. Mushiake	
Fri.	C500 Ms. Mikoda			L500 Mr. Ichinose	

※  : Co-learning Seminar (p.7)

## Level 6 (Advanced)

Course Title	JLP course code	Course Schedule	Notes	Google Classroom Code
Advanced Japanese Listening Comprehension	L690	Tue 2	General Education: Japanese E-1, E-2 Course Code: CB22118, CB22119	3cxuza7, wenlpqu
Advanced Japanese Speaking/Conversation	S690	Thu 2	General Education: Japanese A-1, A-2 Course Code: CB42125, CB42126	sihdszh, qlz5wrc
Advanced Japanese Reading Comprehension	R690	Tue 3	General Education: Japanese I-1, I-2 Course Code: CB23109, CB23110	bewpvja, 4pdocpw
Advanced Japanese Writing/Composition	W690	Thu 3	General Education: Japanese G-1, G-2 Course Code: CB43109, CB43110	x4lvqyl, e32fyrr
Advanced Business Japanese	BJ680	Thu 6		6e2le4p
Advanced Japanese Culture Seminar: Japanese Classical Literature	CL600	Thu 5		4uf3xxz
Japanese Language and Culture Seminar	NS060	Wed 1	Only Japanese Language & Culture Study Program students	gbdd525
Advanced Research Seminar	RS020	Tue 3		wb6z4mr

Advanced Co-learning Seminar	JLP course code	Course Schedule	Course Code	Google Classroom Code
Global Communication	GC680	Tue 1	CB21116	ez4h3gj
Intellectual History of Modern Japan	MH600	Mon 4	CB00005	qnlft243
Intercultural Communication Studies: Application, Personal Leadership	PL600	Mon 2	CB12118	ikb5czw
Japanese Buddhism in the Modern Period	BM600	Mon 5	CB00091	zo7ru6y

### Timetable

	1 8 : 50-10 : 20	2 10 : 30-12 : 00	3 13 : 00-14 : 30	4 14 : 40-16 : 10	5 16 : 20-17 : 50	6 18 : 00-19 : 30
Mon.		PL600 Ms. Yamamoto		MH600 Mr. Morikawa	BM600 Mr. Klautau	
Tue.	GC680 Ms. Yamamoto	L690 Ms. Shukuri	R690 Ms. Sugaya RS020 Mr. Nakamura			
Wed.	NS060 Mr. Soejima					
Thu.		S690 Ms. Saito	W690 Ms. Saito		CL600 Ms. S. Sato	BJ680 Ms. Suzuki
Fri.						

※   : Co-learning Seminar (p.7)

## 8. Class Schedule by level

### Level 1

	April	May	June	July	August
C100	4/14			7/21	
C110	4/12			7/21	
C120	4/14			7/21	
C150	4/16		6/7		
M100			6/10		7/27
R150	4/16		6/4		
A150	4/20		6/8		
H150	4/12 — 4/15				
K101	4/12			7/19	
K102	4/13				7/27
K151	4/19			7/22	

### Level 2

	April	May	June	July	August
C200	4/12			7/15	
C210	4/12			7/19	
C220	4/14			7/16	
C250a	4/12		5/31		
C250b			6/8	7/22	
R250			6/8		7/27
A250a	4/13		6/1		
A250b			6/15		7/27
K201	4/15			7/19	
K202	4/14			7/21	
K250	4/12		5/31		

### Level 3

	April	May	June	July	August
C320	4/16				8/6
C310-R/W	4/14			7/21	
C310-L/S	4/12			7/19	
G/R350		6/1		7/16	
G/W350		6/1		7/16	
L300	4/23				7/30
G/L350		6/3		7/19	
S300	4/15			7/15	
G/S350		6/3		7/19	
R300	4/13			7/20	
W300	4/13			7/20	
A350			6/8	7/20	
K300	4/13			7/16	
K350		6/1		7/16	



### Level 4

	April	May	June	July	August
C420	4/16				8/4
C410-R/W	4/14			7/21	
C410-L/S	4/12			7/19	
L400	4/16			7/16	
S400	4/22			7/22	
R400	4/12			7/19	
W400	4/13			7/20	
K400	4/13			7/16	
BJ480	Summer Intensive Class : 8/20~8/25				
N480	4/15		6/3		
CC420	4/13				7/27
FT400	4/14				8/4
MM420	4/12				7/26
PE420	4/14				8/4
SC420	4/16				7/30
NS060	4/14				8/4
RS020	4/13				7/27

### Level 5

	April	May	June	July	August
C500	4/16			7/16	
L500	4/16			7/16	
R500	4/13			7/20	
S590	4/15				8/5
W500	4/15			7/15	
K501	4/14			7/21	
K502	4/14			7/21	
N580	4/14		6/9		
DU500	4/14				8/4
HF520	4/13				7/27
JF520	4/19				8/2
JL500	4/14				8/4
JM500	4/13				7/27
ML500	4/15			7/22	
PW500	4/12				7/26
HS500	Summer Intensive Class : 8/23~8/26				
PA500	4/13				7/27
NS060	4/14				8/4
RS020	4/13				7/27

### Level 6

	April	May	June	July	August
L690	4/13				8/3
S690	4/15				8/5
R690	4/13				8/3
W690	4/15				8/5
BJ680	4/15			7/22	
GC680	4/13				7/27
MH600	4/12				7/26
PL600	4/12				7/26
BM600	4/12				7/26
CL600	4/15			7/15	
NS060	4/14				8/4
RS020	4/13				7/27

## 9. Contact Information

### Inquiries about Japanese Classes

If you don't know which classes to register, or have problems with your classes, please ask your program coordinator. Please send an inquiry by email first. If you need to meet in person, please make an appointment by email.

Program Name	Coordinator ( upper row : main coordinator in charge)	Department/Email Address
Japanese Language Program in general	Associate Professor Masako HAYASHI	Kawauchi Kita Campus, Kawakita Joint Building 519 Email: masako.hayashi.c5 * tohoku.ac.jp
	Associate Professor Wataru NAKAMURA	Kawauchi Kita Campus, Kawakita Joint Building 523 Email: wataru.nakamura.a8 * tohoku.ac.jp
JYPE COLABS	Professor Satoshi UEHARA	Kawauchi Kita Campus, Kawakita Joint Building 520 Email: uehara * he.tohoku.ac.jp
	Professor Natsue SUGAYA	Kawauchi Kita Campus, Kawakita Joint Building 522 Email: natsue.sugaya.e1 * tohoku.ac.jp
IPLA	Associate Professor Wataru NAKAMURA	Kawauchi Kita Campus, Kawakita Joint Building 523 Email: wataru.nakamura.a8 * tohoku.ac.jp
	Senior Assistant Professor Yukiko SHUKURI	Kawauchi Kita Campus, Kawakita Joint Building 518 Email: yukiko.shukuri.a5 * tohoku.ac.jp
Intensive Japanese Language Program	Professor Kensaku SOEJIMA	Kawauchi Kita Campus, Kawakita Joint Building 517 Email: kensaku * tohoku.ac.jp
	Professor Satoshi UEHARA	Kawauchi Kita Campus, Kawakita Joint Building 520 Email: uehara * he.tohoku.ac.jp
Japanese Studies Program	Professor Kensaku SOEJIMA	Kawauchi Kita Campus, Kawakita Joint Building 517 Email: kensaku * tohoku.ac.jp

※ The location of the Kawakita Joint Building is shown on A07 in the Kawauchi Campus Map.

※ Replace \* with @ in email addresses.

### Inquiries about Official Procedures

Student Exchange Division, International Education Section

Kawauchi Kita Campus Education and Student Support Center, 2F (see A01 in the Kawauchi Campus Map)

Email: sed2\*grp.tohoku.ac.jp

### (Class Registration, Placement test, etc.)

Japanese Language Program at Kawauchi

Kawauchi Kita Campus International Exchange Building 1F R113 (see A12 in the Kawauchi Campus Map)

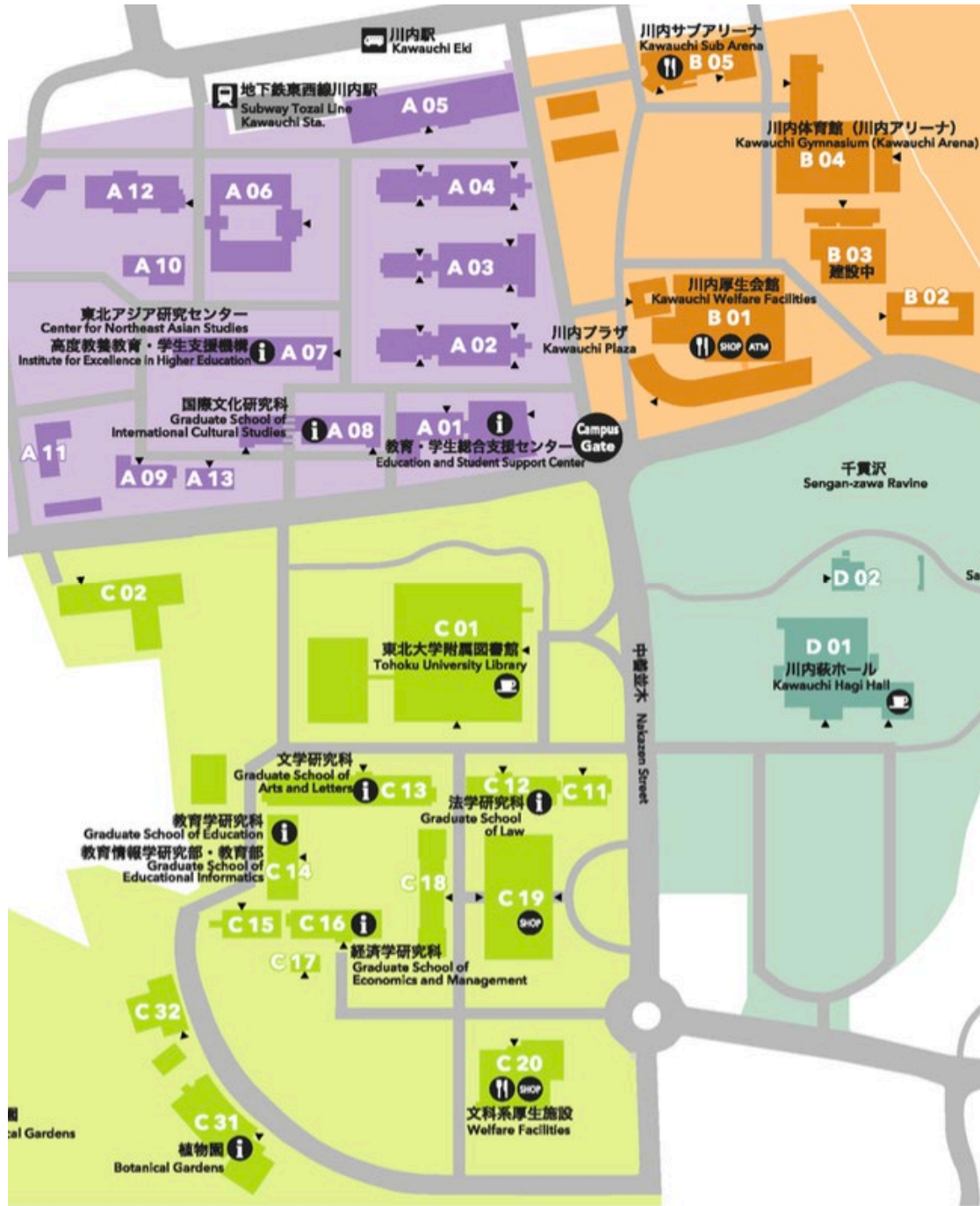
Email: adm-jljk\*g-mail.tohoku-university.jp

Note: 1. Replace \* with @ in email addresses

2. We cannot respond to inquiries on weekends or holidays.

3. We do not issue hours certificates.

# 10. Kawauchi Campus Map



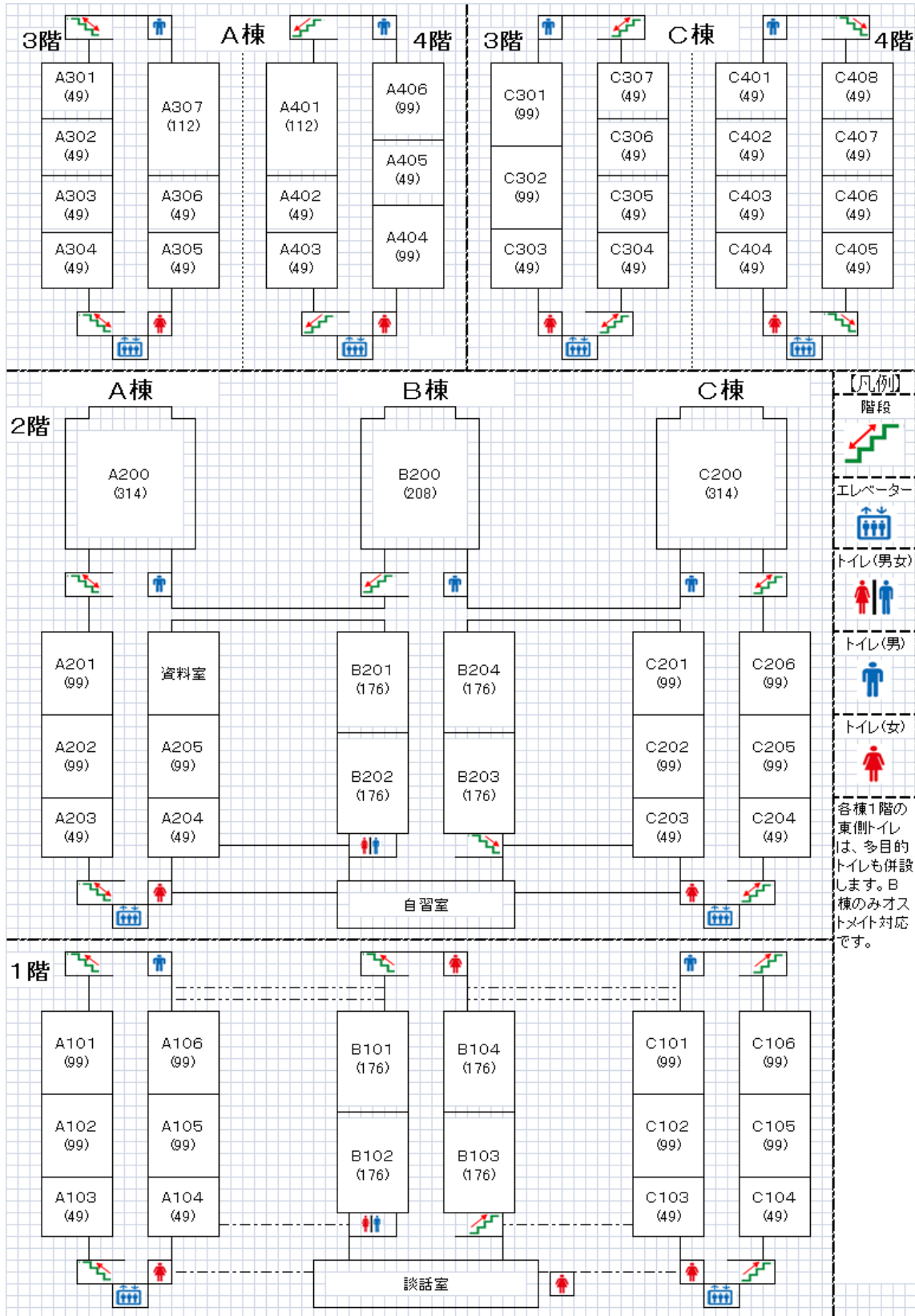
- A 01** 教育・学生総合支援センター  
Education and Student Support Center
- A 02** 講義棟A棟  
Lecture Rooms A
- A 03** 講義棟B棟  
Lecture Rooms B
- A 04** 講義棟C棟  
Lecture Rooms C
- A 05** マルチメディア教育研究棟 (教育情報基盤センター)  
Multimedia Education and Research Complex (Center for Information Technology in Education)
- A 06** 学生実験棟  
Student Laboratories
- A 07** 川北合同研究棟  
Kawauchi Research Forum  
(高度教養教育・学生支援機構/東北アジア研究センター)  
(Institute for Excellence in Higher Education / Center for Northeast Asian Studies)
- A 08** 国際文化研究棟  
Graduate School of International Cultural Studies
- A 09** 保健管理センター  
Student Health Care Center
- A 10** 教育研究基盤支援棟 4  
Education and Research Base Support Building 4
- A 11** 教育研究基盤支援棟 5  
Education and Research Base Support Building 5
- A 12** 国際交流棟  
International Exchange Building
- A 13** 学生相談所  
University Counseling Center

- B 01** 川内厚生会館  
Kawauchi Welfare Facilities
- B 02** 川内サークル部室棟  
Kawauchi Circle and Club Building
- B 03** 川内課外活動共用施設 (川内ホール)  
Kawauchi Extracurricular Activity Shared Facilities (Kawauchi Hall)
- B 04** 川内体育館 (川内アリーナ)  
Kawauchi Gymnasium (Kawauchi Arena)
- B 05** 川内サブアリーナ  
Kawauchi Sub Arena

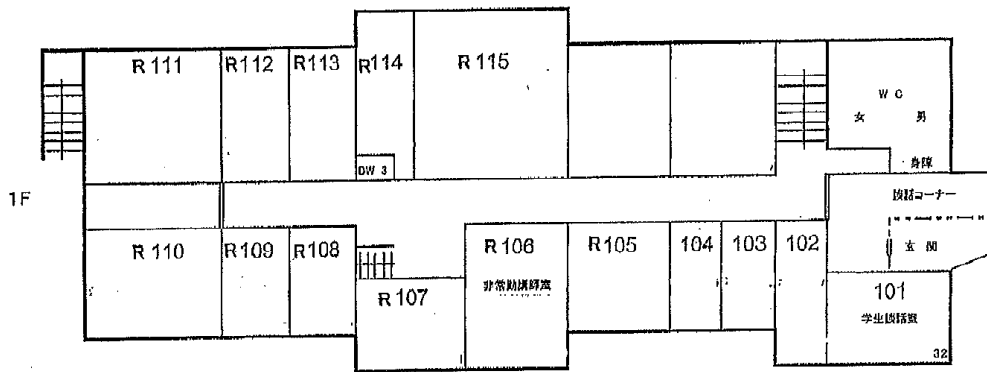
- C 01** 東北大学附属図書館  
Tohoku University Library
- C 02** 入試センター  
Admission Center
- C 11** 文・法合同研究棟  
Arts and Letters / Law Joint Building
- C 12** 法学研究科棟  
Graduate School of Law
- C 13** 文学研究科棟  
Graduate School of Arts and Letters
- C 14** 文科系総合研究棟 (教育学研究科)  
New Humanities Building (Graduate School of Education)
- C 15** 文科系合同研究棟  
Humanities Building
- C 16** 経済学研究科棟  
Graduate School of Economics and Management
- C 17** 経済学研究科演習室  
Seminar Rooms
- C 18** 中講義棟  
Lecture Rooms
- C 19** 文科系総合講義棟  
Lecture Rooms
- C 20** 文科系厚生施設 (メイプルパーク川内)  
Welfare Facilities (Maple Park Kawauchi)

# 11. Classroom Locations

## A, B, and C Classrooms (A02, A03, A04)



# International Exchange Building (A12)



# Multimedia Education and Research Complex (A05)

