

ATTN: Japanese Language Program at Kawauchi Students

-Due to the COVID-19 pandemic, currently all inquiries for the Student Exchange Division are being conducted by email only.

Please do not telephone or come to the office in person.

We will respond to email as quickly as possible but there may be some delay. We ask for your patience and understanding.

Email: sed2@grp.tohoku.ac.jp

-You can log in to the academic affairs system from the on-campus network to apply for classes.

<https://jlpk.bureau.tohoku.ac.jp/entry/>

-To find out how you can log in to the on-campus network, please refer to the link below.

<https://www.tains.tohoku.ac.jp/contents/remote/vpnstudent.html>

- You can use campus Wi-Fi at the university. Please see the URL below for setup instructions.

<https://www.dc.tohoku.ac.jp/guide/wifi/wifi-e.html>

-Classes for the Japanese Language Program at Kawauchi will be conducted online using Google Classroom. Consequently, Class Registration Cards will not be used.

-Please join Classroom using the class codes (see the class guide or class code list) for the classes you want to take.

-Please attend the classes remotely and avoid non-essential outings.

-Please read the Enrollment Guide, which will be updated as needed, on the Japanese Language Program website.

Japanese Language Program website

<http://www.ihe.tohoku.ac.jp/SJLE/>

Tohoku University Online Class Guide

<https://sites.google.com/view/teleclass-tohoku/forstudents>

Institute for Excellence in Higher Education

Tohoku University

A Guide to the Tohoku University Japanese Language Program at Kawauchi (Updated November 24, 2020)

Second Term, AY 2020
Tohoku University Institute for Excellence in Higher Education

The Institute for Excellence in Higher Education offers the Japanese Language Program for International Students to improve the Japanese language proficiency of foreign students and researchers at Tohoku University, and other universities in Sendai. We hope that it will facilitate your everyday activities and research. There are a variety of classes, from beginner to advanced levels, so you can study at the Japanese level appropriate for you.

Table of Contents

1. Application/Class Registration
2. Notes on Attending Class
3. Level and Subject Codes
4. Grading and Progression System
5. Eligibility for Classes
6. Subjects and Timetable by Level
7. Class Schedule by level
8. Contact Information
9. Kawauchi Campus Map
10. Classroom Locations

The majority of JLPK classes will be conducted online using Google Classroom. Consequently, Class Registration Cards will not be used.

Program Term
October 1 (Thu.) to February 3 (Wed.)

The schedule may change due to the novel coronavirus pandemic. We ask for your understanding and cooperation.

Application/Class Registration Schedule
BE SURE TO REGISTER DURING THE REGISTRATION PERIOD!

Second Semester: October 1 (Thu.) through February 3 (Wed.)

Application Period: September 24 (Thu.) - October 15 (Thu.)

Registration Period: October 9 (Fri.) - October 22 (Thu.)

4th Quarter: November 30 (Mon.) through February 3 (Wed.)

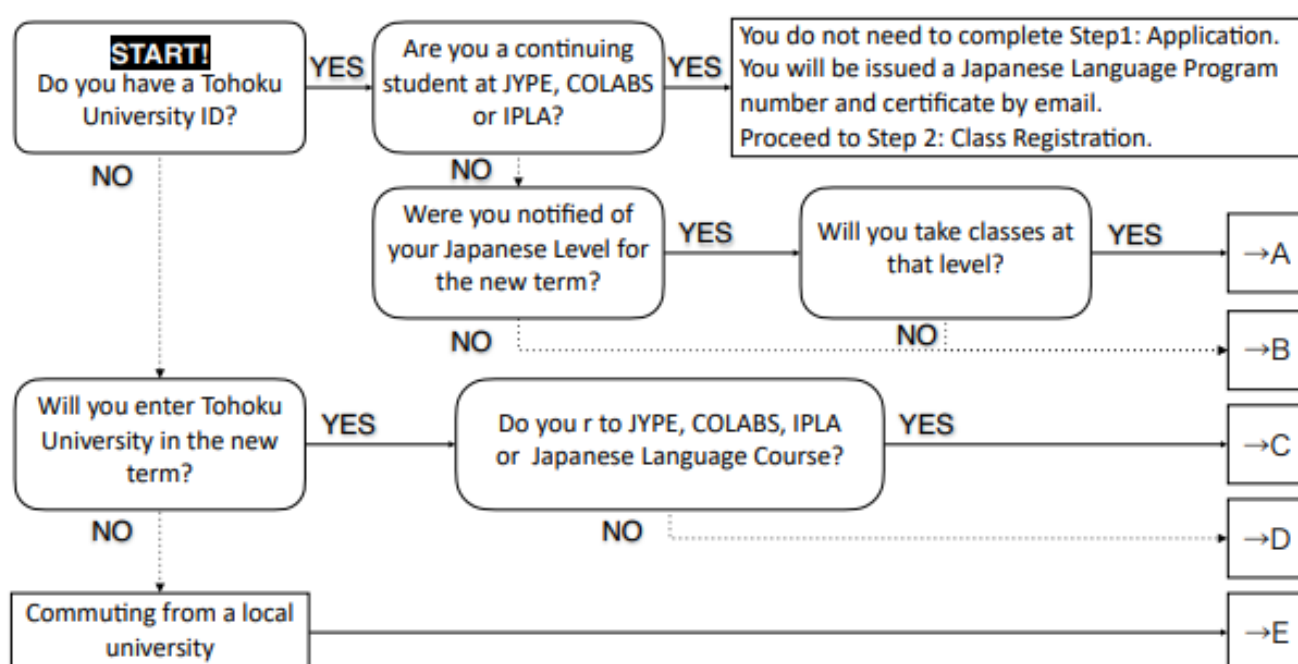
Application Period for Half-Term Classes (Second Part of Term):

November 19 (Thu.) – December 2 (Wed.)

Registration Period for Half-Term Classes (Second Part of Term):

December 1 (Tue.) - December 9 (Wed.)

1. Application/Class Registration



※ You must submit an application even if you applied during the previous term!

Step 1: Application

A (enrolled at TU, have an assigned Japanese level, will not take the PT):

(1) Log in to the academic affairs system from the on-campus network to apply for classes.

URL: <https://jlpk.bureau.tohoku.ac.jp/entry/>

*Please be sure to register your Nihongo ID from the previous term and password with the system.

*Applications are accepted from September 24 to October 15.

*Applications for classes taught in the latter half of the term are accepted from November 19 to December 2.

(2) You will receive a Nihongo ID and Excel file by email. The Excel file is for those who are taking the placement test, so you need not submit it.

(3) Later, you will be sent a certificate showing your Japanese level for the new term.

(4) After the term starts, please perform Step 2.

B-1 (enrolled at TU, beginner, will not take the PT):

- (1) Log in to the academic affairs system from the on-campus network to apply for classes.

URL: <https://jlpk.bureau.tohoku.ac.jp/entry/>

*Please be sure to choose “beginner” at the question 12 on the system.

*Applications are accepted from September 24 to October 15.

*Applications for classes taught in the latter half of the term are accepted from November 19 to December 2.

- (2) You will receive a Nihongo ID by email. Please complete the preparatory assignment on the website below before the start of classes.

URL: <http://www.he.tohoku.ac.jp/SJLE/kana/>

- (3) Later, you will receive a Level 1 (beginner) certificate.

- (4) After the term starts, please perform Step 2.

B-2 (enrolled at TU, studied Japanese before, will take the PT):

- (1) Log in to the academic affairs system from the on-campus network to apply for classes.

URL: <https://jlpk.bureau.tohoku.ac.jp/entry/>

* If you have a Nihongo ID and password from the previous term, please be sure to register them with the system.

*Applications are accepted from September 24 to October 15.

*Applications for classes taught in the latter half of the term are accepted from November 19 to December 2.

- (2) You will receive a Nihongo ID and Excel file by email. You will also be provided a link to information on the placement test.

- (3) Take the online placement test.

- (4) Enter your test results in the Excel file and send it to the provided email address.

- (5) You will be sent a certificate showing your Japanese level. If you were notified of a level for the new term, but also have a level determined by your test result, your level will be whichever is higher.

- (6) After the term starts, please perform Step 2.

C-1 (not yet enrolled at TU, beginner, participating in the above programs, will not take the PT):

- (1) You will receive a Nihongo ID by email. Please complete the preparatory assignment on the website below before the start of classes.

URL: <http://www.he.tohoku.ac.jp/SJLE/kana/>

- (2) Later, you will receive a Level 1 (beginner) certificate.

- (3) After entering TU, please perform Step 2.

C-2 (not yet enrolled at TU, studied Japanese before, participating in the above programs, will take the PT):

- (1) You will receive a Nihongo ID and Excel file by email. You will also be provided a link to information on the placement test.

- (2) Take the online placement test.

- (3) Enter your test results on the Excel file and send it to the provided email address.

- (4) You will be sent a certificate showing your Japanese level.

- (5) After entering TU, please perform Step 2.

D-1 (not yet enrolled at TU, beginner, general, will not take the PT):

- (1) After entering TU, log in to the academic affairs system from the on-campus network to apply for classes.

URL: <https://jlpk.bureau.tohoku.ac.jp/entry/>

*Please be sure to choose “beginner” at the question 12 on the system.

*Applications are accepted from September 24 to October 15.

*Applications for classes taught in the latter half of the term are accepted from November 19 to December 2.

- (2) You will receive a Nihongo ID by email. Please complete the preparatory assignment on the website below before the start of classes.

URL: <http://www.he.tohoku.ac.jp/SJLE/kana/>

- (3) Later, you will receive a Level 1 (beginner) certificate.

- (4) Please perform Step 2.

D-2 (not yet enrolled at TU, studied Japanese before, general, will take the PT):

(1) After entering TU, log in to the academic affairs system from the on-campus network to apply for classes.

URL: <https://jlpk.bureau.tohoku.ac.jp/entry/>

*Applications are accepted from September 24 to October 15.

*Applications for classes taught in the latter half of the term are accepted from November 19 to December 2.

(2) You will receive a Nihongo ID and Excel file by email. You will also be provided a link to information on the placement test.

(3) Take the online placement test.

(4) Enter your test results in the Excel file and send it to the provided email address.

(5) You will be sent a certificate showing your Japanese level.

(6) Please perform Step 2.

E (not affiliated with TU, will take the PT):

(1) Send an email to the below address, informing us of your desire to take classes in the Japanese Language Program.

Address: jlpk@g-mail.tohoku-university.jp

*Applications are accepted from September 24 to October 15.

*Applications for classes taught in the latter half of the term are accepted from November 19 to December 2.

*If you are unable to create a Tohoku University ID (Tohoku University email address), you will not be able to take online classes.

(2) You will receive a survey by email.

(3) Enter your answers on the survey form, and return it by email.

(4) You will receive a Nihongo ID and Excel file by email. You will also be provided a link to information on the placement test.

(5) Take the online placement test.

(6) Enter your test results on the Excel file and send it to the provided email address.

(7) If you are rated Level 2 (basic) or higher, you will be issued a Nihongo ID and certificate by email.

(8) Please perform Step 2.

Step 2: Class Registration

(1) Please join classes suitable for your level; if you wish to register after attending the first class, show your certificate and ask for the instructor's permission.

*Class sizes are limited. Students will be accepted on a first-come basis.

*Some classes preferentially accept students from certain programs.

(2) Log in to the academic affairs system and register your classes using the class registration screen.

URL: <https://jlpk.bureau.tohoku.ac.jp/student/login.php>

※ You will only be able to register only classes for which you have received permission from the instructors.

※ IPLA students will be informed about registration in a separate email. Do NOT register with the above system.

※ Class registrations are accepted from October 9 to October 22.

※ Registrations for classes taught in the latter half of the term are accepted from December 1 to December 9.

*Courses in the latter half of the term

	JLP course code
Level 1 (Beginner)	M100
Level 3 (Pre-intermediate)	A350, G/R350, G/W350, K350, L350, S350
Level 4 (Intermediate)	BJ480(Intensive Class)

2. Notes on Attending Class

1. Be sure to register for classes. If you do not, you will not be able to take classes offered by this program.
2. You cannot register for classes after the deadline (October 22).
※ The deadline to register for classes taught in the latter half of the term is December 9.
3. Students enrolled at universities in and around Sendai are eligible to take classes. Relatives etc. of international students are not eligible to attend classes.
※ Those enrolled in universities other than Tohoku University are eligible to take classes if they are Level 2 or higher.
4. Read the syllabus before registering for classes to learn about class goals, content, and how performance is evaluated.

Syllabus: <http://www.he.tohoku.ac.jp/SJLE/syllabi/> (after September 18)

5. Please purchase your textbooks at the bookstore in the Kawauchi Campus Welfare Facilities (see B01 in the Kawauchi Campus Map). Using copied textbooks (paper photocopies, or digital copies downloaded from the Internet) in class is forbidden. Students using such copies will not be permitted to attend class. Making illegal copies of copyrighted materials is forbidden under Japanese law.
6. Class sizes are limited. Students will be accepted on a first-come basis, so you may not be able to take all your first-choice classes.

Intensive Learning Classes up to Pre-intermediate (excluding H150 and K151), RS030, RS030, RS020	Limit: 10
C100, C110, C120, B170, M100, H150, C200, C210, C220, B270, BJ480, N480, SC420, TC420, L590, N580, CP520, JC520, JM500, JS500, LV500, HJ520, PW500, L690, S690, R690, W690, BJ680, GC680, IC600, IU620, MH600, TW600, ML000	Limit: 15
K151, K101, K102, C320, S300, C420, S400, S500	Limit: 20
Other	Limit: 25

7. If you must be absent from class, inform the instructor directly or via a classmate. If you do not attend at least two-thirds of the total number of classes, you will receive a "D" (fail).
8. Failure to follow the above rules may result in losing eligibility to attend classes in this program.

3. Level and Subject Codes

1. Japanese levels are numbered 1 through 6. Attainment goals are shown in the below table.

	Attainment Goals	CEFR/JFS	JLPT
Level 1 (Beginner)	Students will acquire conversation, reading, and writing abilities necessary for daily life.	A1	N5
Level 2 (Basic)	Students will acquire speaking, listening, reading, and writing abilities for a variety of everyday situations.	A2.1	N4
Level 3 (Pre-intermediate)	Students will acquire basic Japanese skills needed for student life and attending university classes in Japan.	A2.2	N3
Level 4 (Intermediate)	Students will acquire skills needed to read articles and essays on familiar topics of interest and write simple reports. They will also learn to listen to lectures and express their own opinions in Japanese.	B1	N2
Level 5 (Upper-Intermediate)	Students will acquire Japanese skills needed to read academic texts, write reports, listen to lectures, and make presentations.	B2	N1
Level 6 (Advanced)	Students will acquire Japanese skills needed to understand specialized academic texts, write reports, listen to lectures related to their majors, and give seminar presentations.	C1	

CEFR: Common European Framework of Reference for Languages

JFS: JF Standard for Japanese-Language Education

JLPT: Japanese Language Proficiency Test

2. Please see below for an explanation of Subject Codes.

B
1
0
0

Abbreviated Class Subject

C(Comprehensive Japanese)	Learn grammar and vocabulary according to the students' level, extend "listening" "talking" "reading" "writing" skills, and comprehensively acquire Japanese language proficiency necessary for student life in Japan.
B (Basic Japanese for Business Communication)	Learn elementary conversational skills needed for various aspects of everyday life in Japan, and simple expressions used in business.
I (Beginning/Basic Japanese for Interaction)	Learn basic grammar, acquire listening, speaking, reading, and writing skills. Emphasis will be placed on acquiring communication skills.
G (Grammar)	Study grammar, build fundamental Japanese skills.
L (Listening Comprehension)	Acquire listening skills necessary for student life, such as listening to lectures, understanding explanations, and so on.
S (Speaking/Conversation)	Acquire speaking skills necessary to student life, learn to make oral presentations.
R (Reading Comprehension)	Acquire fundamental reading comprehension skills necessary to read specialized/academic texts.
W (Writing/Composition)	Acquire fundamental writing skills necessary to write research plans, research papers, etc.
A(Applicative Practice)	Acquire the ability to apply the Japanese language.
H (Hiragana/Katakana)	Learn hiragana and katakana syllabaries.
K (Kanji/Vocabulary)	Learn kanji and its related vocabulary.

Japanese Level (Levels 1-6)

Priority/Exclusive Program	
0	No Priority/ Non-exclusive
1	JYPE/COLABS
2	IPLA
5	Intensive Japanese Language Program
6	Japanese Language & Culture Study Program
7	GPEM
8	DATentre (Employment Support Program)
9	General Education

Countries that use/do not use Chinese characters

0	No restrictions
1	For students from countries that do not use Chinese characters
2	For students from countries that use Chinese characters

4. Grading and Progression System

1. The grading scale for this program is as follows.

AA	Particularly excellent (90-100 points).
A	Excellent (80-89 points).
B	Good (70-79 points).
C	Passed (60-69 points).
D	Failed (0-59 points).
E	Withdrew from the class.

- ※ You will be notified of your grades at the end of each term. Upon request, your academic advisor can be notified of your grades too.
- ※ If you wish to withdraw from a class, contact the class's instructor. JYPE, COLABS, and IPLA students should contact the Student Exchange Division. If you stop attending class without withdrawing, you will receive a "D."
- ※ Deadlines for dropping classes are as follows.
Term-long Classes: November 30
Half-term Classes (first part of the term): November 13
Half-term Classes (second part of the term): December 25
- ※ You will also receive a "D" if you do not attend at least two-thirds of the total number of classes.
- ※ If you require an Academic Report (Rishuu Shoumeisho), please ask for it at the International Education Section of the Student Exchange Division (p.18).
- ※ In general, only JYPE, COLABS, and IPLA students receive credit for classes registered in the Japanese Language Program; other students will not receive credit. However, some departments may approve credits for these classes. For details, inquire with the relevant staff at your department.

2. This program's progression system is as follows.

JYPE(Level 1-2), COLABS(Level 1-2), and IPLA(Level 1-2) Students

If you obtain a C or better, and your credits are approved, you may proceed to the next difficulty level the following term.

Students in Intensive Learning Classes

If you obtain a grade of "A" or better in C150 or C250, you may take classes that are one difficulty level higher than your current level in the second half of the term. If you obtain a grade of "B" or "C" in C150 or C250, you may proceed to the next "Tentative" difficulty level in the second half of the term.

Other students

If you fulfill the conditions indicated on the table below, you may proceed to the next difficulty level the following term without taking a placement test.

Current Term	Conditions	Following Term
Level 1	Obtain an "AA" or "A" grade in both C1 and K1.	→Level 2
Level 2	Obtain an "AA" or "A" grade in both C2 and K2.	→Level 3
Level 3	1. Obtain an "AA" or "A" grade in C3 or C4. 2. Obtain 2 "AA" or "A" grades in both L/S or R/W and another Level 3 or 4 course. ※1	→Level 4
Level 4	or 3. Obtain more than 3 "AA" or "A" grades in Level 3 or 4 courses other than C3, C4, L/S or R/W. ※1 ※2	→Level 5
Level 5	1. Obtain 2 "AA" or "A" grades in both C5 and another level 5 course, ※1 or 2. Obtain more than 3 "AA" or "A" grades in level 5 courses other than C5. ※1 ※2	→Level 6

※1 Except the grades of Kanji classes

※2 Obtaining 2 "B" grades is considered equal to obtaining an "A"

5. Eligibility for Classes

Classes that can be taken at each level are as follows.

- ※ If your level is marked "Tentative," you may register for classes both at your tentative level, and one level below. (E.g. if you are "Level 4 (Tentative)," you may register for both Level 4 and Level 3 classes at the same time.)
- ※ If you are a JYPE, COLABS, or IPLA student you must register for classes either in your tentative level, or one level below. You cannot register for classes both at your tentative level and one level below at the same time. (E.g. if you are "Level 4 (Tentative)," you must choose whether to register for Level 3 classes or Level 4 classes.)

2. Levels			Comprehensive	Listening	Speaking	Reading	Writing	Application/ Practical	Kana	Miscellaneous
1	2 (Tentative)		C100, C110, C120, C150*, B170, M100			R150*		A150*	H150	
2			C200, C210, C220, C250a, C250b*, B270			R250*		A250a, A250b*		ML000
3	3 (Tentative)		C320	L/S310		R/W310		A350		ML000
4				L300 L350	S300 S350	R300 G/R350	W300 G/W350			
4	4 (Tentative)		C420	L/S410		R/W410				N480, BJ480, SC420, TC420, ML000, RS020*, NS060*
5				L400	S400	R400	W400			
5	5 (Tentative)		C500	L590	S500	R500	W500			TC420, BJ480, N580, CP520, HG500, JC520, JM500, JS500, LV500, HJ520, PW500, CJ500, SW500, HS500, ML000, RS020*, NS060*
6				L690	S690	R690	W690			TC420, CP520, HG500, JC520, JM500, JS500, LV500, HJ520, PW500, CJ500, SW500, HS500, BJ680, GC680, IC600, IU620, MH600, TW600, PH600, ML000, RS020*, NS060*

- Classes marked with an asterisk (*) are exclusively for that program's students. Students from other programs cannot take those classes.
- You cannot take 2 or more classes whose codes begin with the same letter (e.g. C210 and C220, R400 and R500 etc.). Also, you cannot simultaneously take C classes with L/S or R/W classes (however, you can simultaneously take L/S with S or L classes, and R/W with R or W classes).
- You must attend every session of class even if the class meets two or more times each week.
- If you are a COLABS, or IPLA student continuing from the previous term, and your certificate is marked "J only" (e.g. J3only, J2only, etc.) you may register only for the designated "Japanese" classes in your exchange program and a Kanji class.
- If a two-letter code appears in the "Other" section, the class is a seminar. These are International Co-learning Seminars, except for classes marked CJ, SW, HS, PH and RS. International and Japanese students take International Co-learning Seminars together. They participate in discussions and cooperative projects to deepen their intercultural understanding. Special auditing students, non-degree students, undergraduate students, and graduate students can receive credit for International Co-learning Seminars if they register them as General Education subjects. For further details, inquire with your department's Academic Affairs Section.
- For kanji classes, please select just one class at your designated level, or one level below or above that level. (E.g. If your level is "K2," select one class at level K1, K2, or K3.) However, if the instructor does not give permission, you cannot take the class

Kanji Level	Kanji
K1	K101, K102, K151
K2	K201, K202, K250
K3	K300, K350
K4	K400
K5	K501, K502

6. Subjects and Timetable by Level

Level 1(Beginning)

Course Title	JLP course code	Class	The course schedule	Notes	Google Classroom Code
Beginning Comprehensive Japanese	C100	a	Mon 4-5 • Thu 4-5	a,b and c will provide the same contents.	25dwbpr
		b	Tue 1-2 • Fri 1-2		j6vzb53
		c	Wed 4-5 • Fri 4-5		oxqgcmi
	C110		Mon 1-2 • Thu 1-2		geeaut6
	C120		Wed 1-2 • Fri 1-2		nvj7lr7
	C150		Mon 1-2 • Tue 1-2 • Thu 1-2 • Fri 1-2	Only Intensive Japanese Language Course students Express	awjoxtv
Beginning Japanese for Business Communication	B170		Wed 1-2		agqj7si
Minimal Japanese	M100		Tue 4-5 • Thu 4-5		texjszq
Beginning Japanese Reading Comprehension	R150		Tue 4 • Fri 3	Only Intensive Japanese Language Course students Express	wrfhjwz
Beginning Japanese Applicative Practice	A150		Tue 3	Only Intensive Japanese Language Course students Express	ido366e
Hiragana/Katakana	H150		Oct. 8 – Oct. 12		zzvj75o
Beginning Japanese Kanji/Vocabulary	K101		Wed 3 • Fri 3		uxbfpgq
	K102		Tue 3	For students who have Kanji background	6g3lfgk
	K151		Mon 3 • Thu 3		puoo2xw

Timetable① Course code Class Instructor

Instructor: [Name] Course Code: [Code] Class: [Instructor]					
	1 8 : 50- 10 : 20	2 10 : 30- 12 : 00	3 13 : 00- 14 : 30	4 14 : 40- 16 : 10	5 16 : 20- 17 : 50
Mon.	C150 Ms. Mikoda		K151 Mr. Sugawara	C100a Mr. Choi	
	C110 Ms. Mishima				
Tue.	C150 Ms. Usui		A150 Mr. Nakamura	R150 Ms. Hayashi	
	C100b Ms. Abe		K102 Ms. Shukuri	M100 Ms. Abe	
Wed.	C120 Ms. Mishima		K101 Ms. Azumi	C100c Ms. Usui	
	B170 Ms. Backley				
Thu.	C150 Ms. Moriwaki		K151 Ms. Kashiwagi	C100a Ms. Suzuki	
	C110 Ms. Shukuri			M100 Mr. Choi	
Fri.	C150 Ms. Uchiyama		R150 Ms. Usui	C100c Ms. Miu Takahashi	
	C100b Ms. Azumi		K101 Ms. Moriwaki		
	C120 Ms. Mikoda				

Timetable②: H150

3days intensive course to master Hiragana and Katakana

	1 8:50 ~ 10:20	2 10:30 ~ 12:00	3 13:00~ 14:30
Oct. 8 Thu.	Ms. Moriwaki		Ms. Kashiwagi
Oct.9 Fri.	Ms. Uchiyama		Ms. Usui
Oct. 12 Mon.	Ms. Mikoda		Mr. Sugawara


Level 2(Basic)

Course Title	JLP course code	Class	The course schedule	Notes	Google Classroom Code
Basic Comprehensive Japanese	C200		Wed 4-5 • Fri 4-5		grqdat5
	C210		Mon 1-2 • Thu 1-2		rgemrpc
	C220		Wed 1-2 • Fri 1-2		2xpz4fw
	C250	a	Mon 1-2 • Tue 1-2 • Thu 1-2 • Fri 1-2	a and b will provide the same contents.	5h7shpx
		b	Mon 1-2 • Tue 1-2 • Thu 1-2 • Fri 1-2	Only Intensive Japanese Language Course students Express	u4fasfz
Basic Japanese for Business Communication	B270		Wed1-2		entaswv
Basic Japanese Reading Comprehension	R250		Tue 4 • Fri 3	Only Intensive Japanese Language Course students Express	pzrbkcz
Basic Japanese Applicative Practice	A250	a	Tue 4	Express	2oipgff
		b	Tue 3	Only Intensive Japanese Language Course students Express	2ker4fd
Basic Japanese Kanji/Vocabulary	K201		Mon 3 • Thu 3		k3z5fdy
	K202		Wed 3	For students who have Kanji background	ax674it
	K250		Mon 3 • Tue 3 • Thu 3 • Fri 3	Express	5ifbkgw

Basic Co-learning Seminar	JLP course code	The course schedule	Course Code	Google Classroom Code
Japanese Literature in English and Japanese	ML000	Thu 4	CB44206	44tg7b6

Timetable

timetable					
	1 8 : 50-10 : 20	2 10 : 30-12 : 00	3 13 : 00-14 : 30	4 14 : 40-16 : 10	5 16 : 20-17 : 50
Mon.	C210 Ms. Seki		K250 Ms. Uchiyama		
	C250a Mr. Choi		K201 Ms. Shukuri		
	C250b Ms. Mikoda				
Tue.	C250a Ms. Yokosawa		A250b Mr. Nakamura	R250 Ms. Hayashi	
	C250b Ms. Usui		K250 Ms. Yokosawa	A250a Ms. Mikoda	
Wed.	C220 Ms. Kashiwagi		K202 Ms. Y. Sato	C200 Ms. Miu Takahashi	
	B270 Ms. Suzuki				
Thu.	C210 Ms. Azumi		K250 Ms. Saito	ML000 Ms. Mushiake	
	C250a Ms. Kashiwagi		K201 Ms. Azumi		
	C250b Ms. Moriwaki				
Fri.	C220 Ms. Backley		R250 Ms. Usui	C200 Mr. Choi	
	C250a Ms. Moriwaki		K250 Ms. S. Endo		
	C250b Ms. Uchiyama				

※  : Co-learning Seminar(p.7)

Level 3 (Pre- Intermediate)

Course Title	JLP course code	The course schedule	Notes	Google Classroom Code
Pre-Intermediate Comprehensive Japanese	C320	Wed 1-2 ・ Fri 1-2		w2qlvir
Pre-Intermediate Japanese Reading/Writing	R/W310	Thu 1-2		xvudrvp
Pre-Intermediate Japanese Listening/Comprehension & Speaking/Conversation	L/S310	Mon 1-2		qzp2jgp
Pre-Intermediate Japanese Grammar/Reading	G/R350	Tue 1 ・ Fri 1	Express	ju3nvs6
Pre-Intermediate Japanese Grammar/Writing	G/W350	Tue 2 ・ Fri 2	Express	okg4c33
Pre-Intermediate Japanese Listening Comprehension	L300	Mon 4		4plvvsb
	L350	Mon 2 ・ Thu 2	Express	ucvi5v4
Pre-Intermediate Japanese Speaking/Conversation	S300	Fri 4		3rxefwh
	S350	Mon 1 ・ Thu 1	Express	shpcqci
Preintermediate Japanese Reading Comprehension	R300	Tue 1		osvustv
Pre-Intermediate Japanese Writing/Composition	W300	Thu 4		ae32oda
Pre-Intermediate Japanese Applicative Practice	A350	Tue 4	Express	rwfljsg
Pre-Intermediate Japanese Applicative Practice	K300	Tue 3 ・ Fri 3		av74ccc
	K350	Mon 3 ・ Tue 3 ・ Thu 3 ・ Fri 3	Express	v4y6igb

Pre-Intermediate Co-learning Seminar	JLP course code	The course schedule	Course Code	Google Classroom Code
Japanese Literature in English and Japanese	ML000	Thu 4	CB44206	44tg7b6

Timetable

	1 8 : 50-10 : 20	2 10 : 30-12 : 00	3 13 : 00-14 : 30	4 14 : 40-16 : 10	5 16 : 20-17 : 50
Mon.	S350 Mr. Choi	L350 Mr. Choi	K350 Ms. Uchiyama	L300 Mr. Sugawara	
	L/S310 Ms. Yokosawa				
Tue.	G/R350 Ms. Yokosawa	G/W350 Ms. Yokosawa	K350 Ms. Yokosawa	A350 Ms. Mikoda	
	R300 Mr. Uehara		K300 Ms. Mikoda		
Wed.	C320 Ms. Azumi				
Thu.	S350 Ms. Kashiwagi	L350 Ms. Kashiwagi	K350 Ms. Saito	W300 Ms. Azumi	
	R/W310 Ms. Mikoda			ML000 Ms. Mushiake	
Fri.	G/R350 Ms. Moriwaki	G/W350 Ms. Moriwaki	K350 Ms. S. Endo	S300 Ms. Shukuri	
	C320 Ms. Usui		K300 Ms. Backley		

※ : Co-learning Seminar(p.7)

Level 4 (Intermediate)

Course Title	JLP course code	The course schedule	Notes	Google Classroom Code
Intermediate Comprehensive Japanese	C420	Wed 1-2 · Fri 1-2		zgx24bq
Intermediate Japanese Reading/Writing	R/W410	Thu 1-2		xhmce3u
Intermediate Japanese Listening/Comprehension & Speaking/Conversation	L/S410	Mon 1-2		us63pf3
Intermediate Japanese Listening Comprehension	L400	Mon 4		up5med3
Intermediate Japanese Speaking/Conversation	S400	Fri 4		dehlkd2
Intermediate Japanese Reading Comprehension	R400	Tue 3		gbwut3j
Intermediate Japanese Writing/Composition	W400	Tue 1		v5chlhv
Intermediate Japanese Kanji/Vocabulary	K400	Mon 3 · Fri 3		kxahvyu
Intermediate Business Japanese	BJ480	Intensive class	Feb. 12 th , 15 th , 16 th , & 17 th 2 nd & 3 rd class xupoko@gmail.com Replace * with @. Those who wish to enroll should send an email to the address above by Jan. 14th	6sjxttv
Intermediate Japanese for JLPT N2	N480	Thu 3		vfmrcyg
Japanese Language and Culture Seminar	NS060	Thu 1	Only Japanese Language & Culture Study Program students	yeqjvse
Intermediate Research Seminar	RS020	Wed 3	Only IPLA students	jwrzap2

Intermediate Co-learning Seminar	JLP course code	The course schedule	Course Code	Google Classroom Code
Seeing Home Country and Area from Japan	SC420	Fri 3	CB53201	qnnzerq
Liven up Sendai by activating the shopping streets in Sendai	TC420	Tue 2	CB55210	xsslz6n
Japanese Literature in English and Japanese	ML000	Thu 4	CB44206	44tg7b6

Timetable

	1 8 : 50-10 : 20	2 10 : 30-12 : 00	3 13 : 00-14 : 30	4 14 : 40-16 : 10	5 16 : 20-17 : 50
Mon.	L/S410 Mr. Sugawara		K400 Ms. Hayashi	L400 Ms. Shukuri	
Tue.	W400 Ms. A. Takahashi	TC420 Ms. Watanabe · Ms. Shimmi	R400 Mr. Uehara		
Wed.	C420 Mr. Soejima		RS020 Ms. Hayashi		
Thu.	R/W410 Ms. Uchiyama NS060 Mr. Soejima		N480 Mr. Seto	ML000 Ms. Mushiake	
Fri.	C420 Ms. Mishima		K400 Ms. Uchiyama SC420 Ms. Mishima	S400 Ms. Mikoda	

※ : Co-learning Seminar(p.7)

Level 5 (Upper-Intermediate)

Course Title	JLP course code	The course schedule	Notes	Google Classroom Code
Upper-Intermediate Comprehensive Japanese	C500	Fri 1-2		ykcxxke
Upper-Intermediate Japanese Listening Comprehension	L590	Thu 2	General Education: Japanese B-1, B-2 Course Code : CB42225, CB42226	cf. ISTU
Upper-Intermediate Japanese Speaking/Conversation	S500	Fri 4		mlgv2gy
Upper-Intermediate Japanese Reading Comprehension	R500	Tue 5		vbjkz23
Upper-Intermediate Japanese Writing/Composition	W500	Thu 4		zpv5mcm
Upper-Intermediate Japanese Kanji/Vocabulary	K501	Mon 5		xq6f2a5
	K502	Wed 5	For students who have Kanji background	6yxob4n
Upper-Intermediate Japanese for JLPT N1	N580	Wed 3		h34k6ap
Japanese Language and Culture Seminar	NS060	Thu 1	Only Japanese Language & Culture Study Program students	yeqjvse
Upper-Intermediate Research Seminar	RS020	Wed 3	Only IPLA students	jwrzap2
Upper-Intermediate Japanese Culture Seminar: An introduction to Classical Japanese Writings	CJ500	Mon 4		4jjo57d
Upper-Intermediate Japanese Culture Seminar: An Introduction to Sino-Japanese Writings	SW500	Tue 4		2zopybv
Upper-Intermediate Japanese Culture Seminar: An Introduction to Early Modern Handwritten Sources	HS500	Wed 5	Face to face class/ classroom A303	

Upper-Intermediate Co-learning Seminar	JLP course code	The course schedule	Course Code	Google Classroom Code
Collaborative Project	CP520	Wed 2	CB32217	mbzipj7
Japanese Culture and Communication	JC520	Mon 3	CB13206	sit7j6y
Japanese Language and Culture in Movies	JM500	Tue 4	CB24212	t3sannr
Japanese Language and Culture in Songs	JS500	Tue 5	CB25203	3o3psnc
Language Varieties in Japanese	LV500	Tue 1	CB21206	n3tf3ok
Honorifics and Japanese useful for university life: Exploring Japanese from the perspective of international students	HJ520	Thu 3	CB43212	iizmuoy
Playback Theater Workshop: advanced	PW500	Mon 3	CB13203	ntt4cee
Japanese Literature in English and Japanese	ML000	Thu 4	CB44206	44tg7b6

Timetable

	1 8 : 50-10 : 20	2 10 : 30-12 : 00	3 13 : 00-14 : 30	4 14 : 40-16 : 10	5 16 : 20-17 : 50
Mon.			JC520 Ms. S. Sato PW500 Mr. Mushiake	CJ500 Ms. S. Sato	K501 Ms. Hayashi
Tue.	LV500 Mr. Soejima			SW500 Mr. Tomono JM500 Mr. Nakamura	R500 Mr. Nakamura JS500 Mr. Uehara
Wed.		CP520 Ms. Mino Takahashi	RS020 Ms. Hayashi N580 Mr. K. Endo		K502 Ms. Hayashi HS500 Mr. Aratake
Thu.	NS060 Mr. Soejima	L590 Mr. Yoshimoto	HJ520 Ms. Hayashi	W500 Mr. Sugawara ML000 Ms. Mushiake	
Fri.	C500 Mr. Sugawara			S500 Mr. Ichinose	

※ : Co-learning Seminar (p.7)

Level 6 (Advanced)

Course Title	JLP course code	The course schedule	Notes	Google Classroom Code
Advanced Japanese Listening Comprehension	L690	Tue 2	General Education: Japanese F-1, F-2 Course Code : CB22230, CB22241	czmiqen
Advanced Japanese Speaking/Conversation	S690	Thu 1	General Education: Japanese D-1, D-2 Course Code : CB41207, CB41208	cf. ISTU
Advanced Japanese Reading Comprehension	R690	Tue 3	General Education: Japanese J-1, J-2 Course Code : CB23225, CB23232	wywxpfs
Advanced Japanese Writing/Composition	W690	Thu 3	General Education: Japanese H-1, H-2 Course Code : CB43214, CB43215	cf. ISTU
Advanced Business Japanese	BJ680	Thu 6		u5crhvg
Japanese Language and Culture Seminar	NS060	Thu 1	Only Japanese Language & Culture Study Program students	yeqjvse
Advanced Research Seminar	RS020	Wed 3	Only IPLA students	jwrzap2
Advanced Japanese Culture Seminar: Pre-modern History and Thoughts in Japan	PH600	Thu 5		cstronw

Advanced Co-learning Seminar	JLP course code	Class	The course schedule	Course Code	Google Classroom Code
Global Communication	GC680	a	Tue 1	CB21205	xxdsgnm
		b	Tue 3	CB23204	lew4hj4
Intercultural Communication Studies: Basics	IC600		Mon 5	CB15205	zswdn5t
Intercultural Understanding	IU620		Thu 2	CB42210	grcq2ey
Intellectual History of Modern Japan	MH600		Thu 2	CB42209	bhwtyjl
Critical thinking and logical writing	TW600		Tue 4	CB24207	6zjirym
Japanese Literature in English and Japanese	ML000		Thu 4	CB44206	44tg7b6

Timetable

	1 8 : 50-10 : 20	2 10 : 30-12 : 00	3 13 : 00-14 : 30	4 14 : 40-16 : 10	5 16 : 20-17 : 50	6 18 : 00-19 : 30
Mon.					IC600 Ms. Yamamoto A403	
Tue.	GC680a Ms. Yamamoto	L690 Ms. Sugaya	GC680b Ms. Yamamoto R690 Ms. Sugaya	TW600 Mr. Kushimoto		
Wed.			RS020 Ms. Hayashi			
Thu.	S690 Mr. Yoshimoto NS060 Mr. Soejima	MH600 Mr. Morikawa IU620 Ms. Watanabe	W690 Mr. Yoshimoto	ML000 Ms. Mushiake	PH600 Mr. Sonehara	BJ680 Ms. Suzuki
Fri.						

※ : Co-learning Seminar (p.7)

7. Class Schedule by level

Level 1

	Oct.	Nov.	Dec.	Jan.	Feb.
C100a	10/5			1/21	
C100b	10/2			1/22	
C100c	10/2			1/20	
C110	10/5			1/25	
C120	10/2			1/20	
C150	10/13		12/3		
B170	10/7			1/20	
M100			12/3	1/26	
R150	10/13		12/4		
A150	10/13		12/1		
H150	10/8—10/12				
K101	10/9			1/22	
K102	10/6			1/26	
K151	10/15			1/28	

Level 2

	Oct.	Nov.	Dec.	Jan.	Feb.
C200	10/2			1/13	
C210	10/1			1/14	
C220	10/2			1/13	
C250a	10/8	11/27			
C250b			12/4	1/29	
B270	10/7			1/20	
R250			12/8	2/3	
A250a	10/13		12/1		
A250b			12/8	1/26	
K201	10/1			1/14	
K202	10/7			1/13	
K250	10/8	11/27			
ML000	10/1			1/21	

Level 3

	Oct.	Nov.	Dec.	Jan.	Feb.
C320	10/9			2/3	
R/W310	10/1			1/21	
L/S310	10/5			1/18	
G/R350			12/1	1/22	
G/W350			12/1	1/22	
L300	10/5			1/18	
L350		11/30		1/21	
S300	10/9			1/29	
S350		11/30		1/21	
R300	10/6			1/19	
W300	10/8			1/21	
A350			12/8	1/26	
K300	10/2			1/19	
K350		11/30		1/25	
ML000	10/1			1/21	

Level 4

	Oct.	Nov.	Dec.	Jan.	Feb.
C420	10/2			1/22	
R/W410	10/1			1/14	
L/S410	10/5			1/18	
L400	10/5			1/18	
S400	10/2			1/22	
R400	10/6			1/19	
W400	10/6			1/19	
K400	10/2			1/22	
BJ480		Intensive Class: Feb. 12th, 15th, 16th, & 17th (2nd & 3rd class)			
N480	10/1	11/19			
SC420	10/2			1/29	
TC420	10/6			1/26	
ML000	10/1			1/21	
NS060	10/1			1/21	
RS020	10/7			1/20	

Level 5

	Oct.	Nov.	Dec.	Jan.	Feb.
C500	10/2			1/22	
L590	10/1			1/28	
S500	10/2			1/22	
R500	10/6			1/19	
W500	10/8			1/21	
K501	10/5			1/18	
K502	10/7			1/13	
N580	10/7	11/25			
CP520	10/7			1/20	
JC520	10/5			1/25	
JM500	10/6			1/26	
JS500	10/6			1/26	
LV500	10/6			1/26	
HJ520	10/1			1/21	
PW500	10/5			1/25	
CJ500	10/5			1/25	
SW500			12/1	1/26	
HS500			12/2	1/27	
ML000	10/1			1/21	
NS060	10/1			1/21	
RS020	10/7			1/20	

Level 6

	Oct.	Nov.	Dec.	Jan.	Feb.
L690	10/6				2/2
S690	10/1			1/28	
R690	10/6				2/2
W690	10/1			1/28	
BJ680	10/8			1/28	
GC680a	10/6			1/26	
GC680b	10/6			1/26	
IC600	10/5			1/25	
IU620	10/1			1/21	
MH600	10/1			1/21	
TW600	10/6			1/26	
PH600	10/1			1/14	
ML000	10/1			1/21	
NS060	10/1			1/21	
RS020	10/7			1/20	

8. Contact Information

Inquiries about Japanese Classes

If you don't know which classes to register, or have problems with your classes, please ask your program coordinator. Please send an inquiry by email first. If you need to meet in person, please make an appointment by email.

Program Name	Coordinator (upper row : main coordinator in charge)	Department/Email Address
JYPE COLABS	Professor Satoshi UEHARA	Kawauchi Kita Campus, Kawakita Joint Building 520 Email: uehara * he.tohoku.ac.jp
	Associate Professor Kensaku SOEJIMA	Kawauchi Kita Campus, Kawakita Joint Building 517 Email: kensaku * tohoku.ac.jp
IPLA	Associate Professor Masako HAYASHI	Kawauchi Kita Campus, Kawakita Joint Building 519 Email: masako * tohoku.ac.jp
	Associate Professor Wataru NAKAMURA	Kawauchi Kita Campus, Kawakita Joint Building 523 Email: wataru.nakamura.a8 * tohoku.ac.jp
Intensive Japanese Language Program	Associate Professor Wataru NAKAMURA	Kawauchi Kita Campus, Kawakita Joint Building 523 Email: wataru.nakamura.a8 * tohoku.ac.jp
	Associate Professor Masako HAYASHI	Kawauchi Kita Campus, Kawakita Joint Building 519 Email: masako * tohoku.ac.jp
Japanese Studies Program	Associate Professor Kensaku SOEJIMA	Kawauchi Kita Campus, Kawakita Joint Building 517 Email: kensaku * tohoku.ac.jp
Miscellaneous	Associate Professor Kensaku SOEJIMA	Kawauchi Kita Campus, Kawakita Joint Building 517 Email: kensaku * tohoku.ac.jp
	Professor Satoshi UEHARA	Kawauchi Kita Campus, Kawakita Joint Building 520 Email: uehara * he.tohoku.ac.jp

※ The location of the Kawakita Joint Building is shown on A07 in the Kawauchi Campus Map.

※ Replace * with @ in email addresses.

Inquiries about Official Procedures

(Class Registration, Issuance of Academic Reports (Rishuu Shoumeisho) etc.)

Student Exchange Division, International Education Section

Kawauchi Kita Campus Education and Student Support Center, 2F (see A01 in the Kawauchi Campus Map)

Phone: 022-795-7817

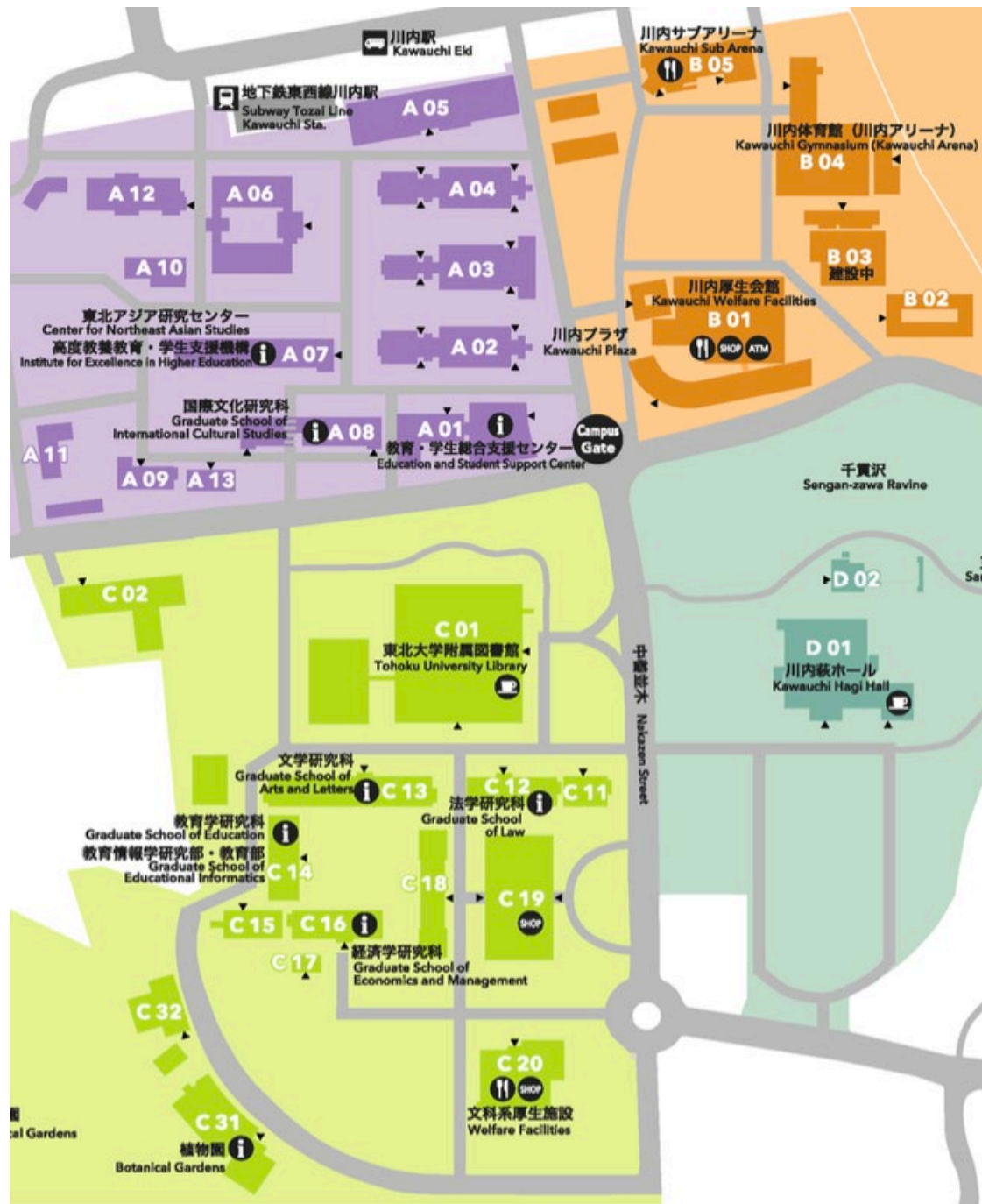
Email: sed2*grp.tohoku.ac.jp

Replace * with @ in email addresses

Note: 1. We cannot respond to inquiries on weekends or holidays.

2. We do not issue hours certificates.

9. Kawauchi Campus Map



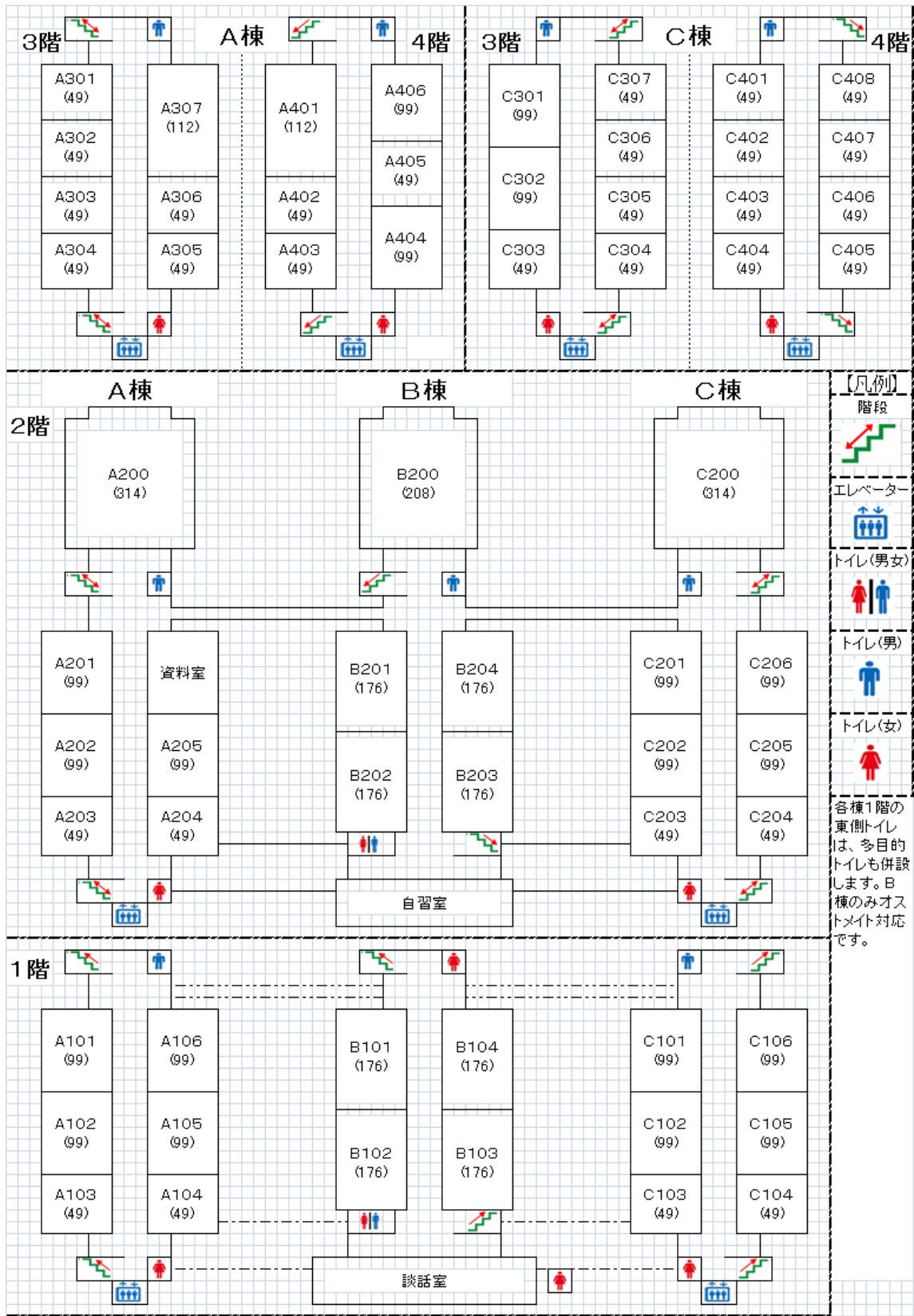
- A 01** 教育・学生総合支援センター
Education and Student Support Center
- A 02** 講義棟A棟
Lecture Rooms A
- A 03** 講義棟B棟
Lecture Rooms B
- A 04** 講義棟C棟
Lecture Rooms C
- A 05** マルチメディア教育研究棟 (教育情報基盤センター)
Multimedia Education and Research Complex (Center for Information Technology in Education)
- A 06** 学生実験棟
Student Laboratories
- A 07** 川北合同研究棟
Kawauchi Research Forum
(高度教養教育・学生支援機構/東北アジア研究センター)
(Institute for Excellence in Higher Education / Center for Northeast Asian Studies)
- A 08** 国際文化研究棟
Graduate School of International Cultural Studies
- A 09** 保健管理センター
Student Health Care Center
- A 10** 教育研究基盤支援棟 4
Education and Research Base Support Building 4
- A 11** 教育研究基盤支援棟 5
Education and Research Base Support Building 5
- A 12** 国際交流棟
International Exchange Building
- A 13** 学生相談所
University Counseling Center

- B 01** 川内厚生会館
Kawauchi Welfare Facilities
- B 02** 川内サークル部室棟
Kawauchi Circle and Club Building
- B 03** 川内課外活動共用施設 (川内ホール)
Kawauchi Extracurricular Activity Shared Facilities (Kawauchi Hall)
- B 04** 川内体育館 (川内アリーナ)
Kawauchi Gymnasium (Kawauchi Arena)
- B 05** 川内サブアリーナ
Kawauchi Sub Arena

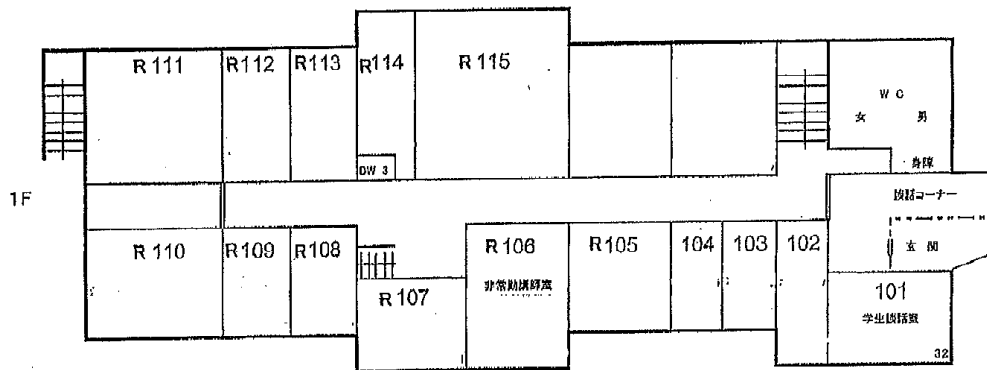
- C 01** 東北大学附属図書館
Tohoku University Library
- C 02** 入試センター
Admission Center
- C 11** 文・法合同研究棟
Arts and Letters / Law Joint Building
- C 12** 法学研究科棟
Graduate School of Law
- C 13** 文学研究科棟
Graduate School of Arts and Letters
- C 14** 文科系総合研究棟 (教育学研究科)
New Humanities Building (Graduate School of Education)
- C 15** 文科系合同研究棟
Humanities Building
- C 16** 経済学研究科棟
Graduate School of Economics and Management
- C 17** 経済学研究科演習室
Seminar Rooms
- C 18** 中講義棟
Lecture Rooms
- C 19** 文科系総合講義棟
Lecture Rooms
- C 20** 文科系厚生施設 (メイプルパーク川内)
Welfare Facilities (Maple Park Kawauchi)

10. Classroom Locations

A, B, and C Classrooms (A02, A03, A04)



International Exchange Building (A12)



Multimedia Education and Research Complex (A05)

