

ATTN: Japanese Language Program at Kawauchi Students

-Due to the COVID-19 pandemic, currently all inquiries for the Student Exchange Division are being conducted by email only.

Please do not telephone or come to the office in person.

We will respond to email as quickly as possible but there may be some delay. We ask for your patience and understanding.

Email: sed2@grp.tohoku.ac.jp

-You can log in to the academic affairs system from the on-campus network to apply for classes. Please refer to the link below for the instruction of setting your devices.

<https://www.dc.tohoku.ac.jp/guide/wifi/wifi-e.html>

-To find out how you can log in to the on-campus network, please refer to the link below.

<https://www.tains.tohoku.ac.jp/contents/remote/vpnstudent.html>

-Classes for the Japanese Language Program at Kawauchi will be conducted online using Google Classroom. Consequently, Class Registration Cards will not be used.

-Please join Classroom using the class codes (see the class guide or class code list) for the classes you want to take.

-Please attend the classes remotely and avoid non-essential outings.

-Please read the Enrollment Guide, which will be updated as needed, on the Japanese Language Program website.

Japanese Language Program website

<http://www.ihe.tohoku.ac.jp/SJLE/>

Tohoku University Online Class Guide

<https://sites.google.com/view/teleclass-tohoku/forstudents>

Institute for Excellence in Higher Education

Tohoku University

A Guide to the Tohoku University Japanese Language Program at Kawauchi (Updated July 1, 2020)

First Term, AY 2020

Tohoku University Institute for Excellence in Higher Education

The Institute for Excellence in Higher Education offers the Japanese Language Program for International Students to improve the Japanese language proficiency of foreign students and researchers at Tohoku University, and other universities in Sendai. We hope that it will facilitate your everyday activities and research. There are a variety of classes, from beginner to advanced levels, so you can study at the Japanese level appropriate for you.

Table of Contents

1. Application/Class Registration
2. Notes on Attending Class
3. Orientation and Registration Guidance
4. Level and Subject Codes
5. Grading and Progression System
6. Eligibility for Classes
7. Subjects and Timetable by Level
8. Class Schedule by level
9. ~~e-learning Program~~ — **【Canceled】**
10. Contact Information
11. Kawauchi Campus Map
12. Classroom Locations

Classes for the Japanese Language Program at Kawauchi will be conducted online using Google Classroom. Consequently, Class Registration Cards will not be used.

Program Term

April 20(Mon.) to August 12(Wed.)

The schedule may change due to the novel coronavirus pandemic. We ask for your understanding and cooperation.

Application/Class Registration Schedule

BE SURE TO REGISTER DURING THE REGISTRATION PERIOD!

First Semester: April 20 (Thu) through August 12 (Wed)

Application Period: March 25 (Wed.) - May 7 (Thu.)

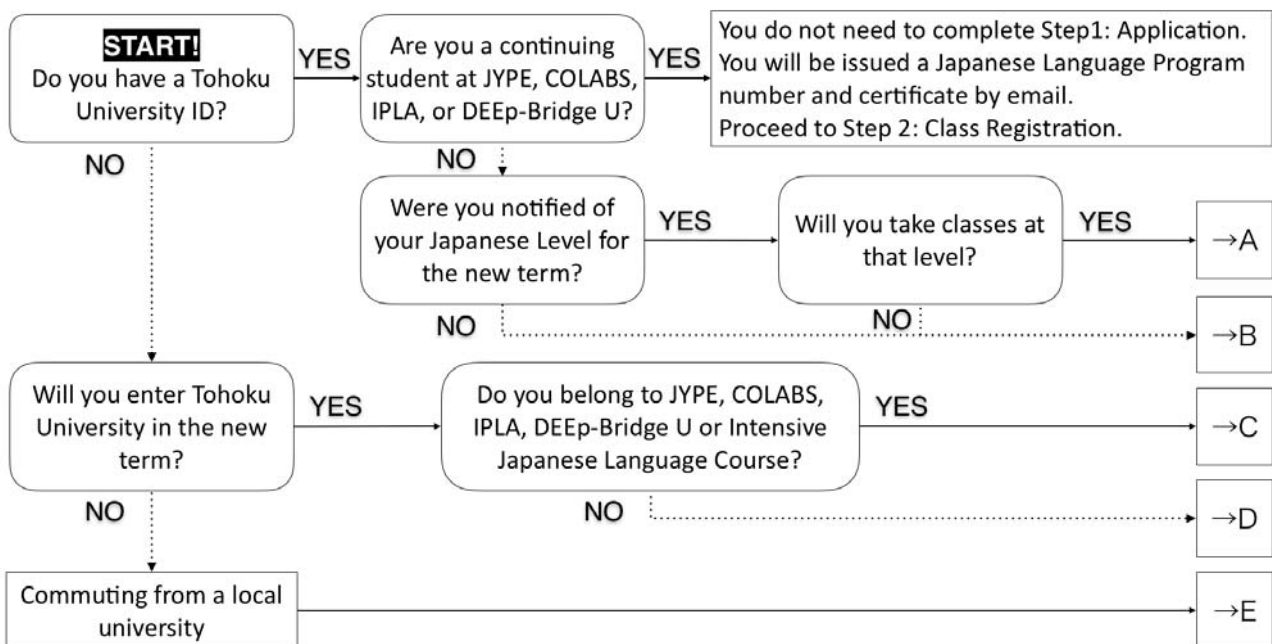
Registration Period: April 15 (Wed.) - May 14 (Thu.)

Second Quarter: June 18 (Thu) through August 12 (Wed)

Application Period for Half-Term Classes (Second Part of Term): June 4 (Thu.) – June 17 (Wed.)

Registration Period for Half-Term Classes (Second Part of Term): June 11 (Thu.) - July 1 (Wed.)

1. Application/Class Registration



※ You must submit an application even if you applied during the previous term!

Step 1: Application

A (enrolled at TU, have an assigned Japanese level, will not take the PT):

(1) Log in to the academic affairs system from the on-campus network to apply for classes.

URL: <https://jlpk.bureau.tohoku.ac.jp/entry/>

*Please be sure to register your Japanese Language Program number from the previous term and password with the system.

*Applications are accepted from March 25 to May 7.

*Applications for classes taught in the latter half of the term are accepted from June 4 to June 17.

(2) You will receive a Japanese Language Program number and Excel file by email. The Excel file is for those who are taking the placement test, so you need not submit it.

(3) Later, you will be sent a certificate showing your Japanese level for the new term.

(4) After the term starts, please perform Step 2.

B-1 (enrolled at TU, beginner, will not take the PT):

(1) Log in to the academic affairs system from the on-campus network to apply for classes.

URL: <https://jlpk.bureau.tohoku.ac.jp/entry/>

*Please be sure to choose "beginner" at the question 12 on the system.

*Applications are accepted from March 25 to May 7.

*Applications for classes taught in the latter half of the term are accepted from June 4 to June 17.

(2) You will receive a Japanese Language Program number by email. Please complete the preparatory assignment on the website below before the start of classes.

URL: <http://www.he.tohoku.ac.jp/SJLE/kana/>

(3) Later, you will receive a Level 1 (beginner) certificate.

(4) After the term starts, please perform Step 2.

B-2 (enrolled at TU, studied Japanese before, will take the PT):

(1) Log in to the academic affairs system from the on-campus network to apply for classes.

URL: <https://jlpk.bureau.tohoku.ac.jp/entry/>

* If you have a Japanese Language Program number and password from the previous term, please be sure to register them with the system.

*Applications are accepted from March 25 to May 7.

*Applications for classes taught in the latter half of the term are accepted from June 4 to June 17.

(2) You will receive a Japanese Language Program number and Excel file by email. You will also be provided a link to information on the placement test.

(3) Take the online placement test.

(4) Enter your test results in the Excel file and send it to the provided email address.

(5) You will be sent a certificate showing your Japanese level. If you were notified of a level for the new term, but also have a level determined by your test result, your level will be whichever is higher.

(6) After the term starts, please perform Step 2.

C-1 (not yet enrolled at TU, beginner, participating in the above programs, will not take the PT):

(1) You will receive a Japanese Language Program number by email. Please complete the preparatory assignment on the website below before the start of classes.

URL: <http://www.he.tohoku.ac.jp/SJLE/kana/>

(2) Later, you will receive a Level 1 (beginner) certificate.

(3) After entering TU, please perform Step 2.

C-2 (not yet enrolled at TU, studied Japanese before, participating in the above programs, will take the PT):

(1) You will receive a Japanese Language Program number and Excel file by email. You will also be provided a link to information on the placement test.

(2) Take the online placement test.

(3) Enter your test results on the Excel file and send it to the provided email address.

(4) You will be sent a certificate showing your Japanese level.

(5) After entering TU, please perform Step 2.

D-1 (not yet enrolled at TU, beginner, general, will not take the PT):

(1) After entering TU, log in to the academic affairs system from the on-campus network to apply for classes.

URL: <https://jlpk.bureau.tohoku.ac.jp/entry/>

*Please be sure to choose "beginner" at the question 12 on the system.

*Applications are accepted from March 25 to May 7.

*Applications for classes taught in the latter half of the term are accepted from June 4 to June 17.

(2) You will receive a Japanese Language Program number by email. Please complete the preparatory assignment on the website below before the start of classes.

URL: <http://www.he.tohoku.ac.jp/SJLE/kana/>

(3) Later, you will receive a Level 1 (beginner) certificate.

(4) Please perform Step 2.

D-2 (not yet enrolled at TU, studied Japanese before, general, will take the PT):

(1) After entering TU, log in to the academic affairs system from the on-campus network to apply for classes.

URL: <https://jlpk.bureau.tohoku.ac.jp/entry/>

*Applications are accepted from March 25 to May 7.

*Applications for classes taught in the latter half of the term are accepted from June 4 to June 17.

(2) You will receive a Japanese Language Program number and Excel file by email. You will also be provided a link to information on the placement test.

(3) Take the online placement test.

(4) Enter your test results in the Excel file and send it to the provided email address.

(5) You will be sent a certificate showing your Japanese level.

(6) Please perform Step 2.

E (not affiliated with TU, will take the PT):

(1) Send an email to the below address, informing us of your desire to take classes in the Japanese Language Program.

Address: jlpk@g-mail.tohoku-university.jp

*Applications are accepted from March 25 to May 7

*Applications for classes taught in the latter half of the term are accepted from June 4 to June 17.

(2) You will receive a survey by email.

(3) Enter your answers on the survey form, and return it by email.

(4) You will receive a Japanese Language Program number and Excel file by email. You will also be provided a link to information on the placement test.

(5) Take the online placement test.

(6) Enter your test results on the Excel file and send it to the provided email address.

(7) If you are rated Level 2 (basic) or higher, you will be issued a Japanese Language Program number and certificate by email.

(8) Please perform Step 2.

Step 2: Class Registration

【Change】 Class Registration Cards are no longer required.

~~(1) Fill out the required items on the Class Registration Cards attached at the end of this guide.~~

~~(2) Take your certificate and Class Registration Cards to classes suitable for your level; if you wish to register after attending the first class, ask for the instructor's permission.~~

~~*Class sizes are limited. Students will be accepted on a first-come basis.~~

~~*Some classes preferentially accept students from certain programs.~~

~~(3) After receiving permission to take the class, give the Class Registration Card to the instructor.~~

~~*If the class is taught by multiple instructors, give the Class Registration Card to just one of them.~~

(4) Log in to the academic affairs system and register your classes using the class registration screen.

URL: <https://jlpk.bureau.tohoku.ac.jp/student/login.php>

You will only be able to register only classes for which you have received permission from the instructors.

IPLA, and DEEp-Bridge U students will be informed about registration in a separate email. Do NOT register with the above system.

~~Class registrations are accepted from April 13 to May 14.~~

Registrations for classes taught in the latter half of the term are accepted from June 11 to June 24.

*Courses in the latter half of the term

	JLP course code
Level 1 (Beginner)	A150b, C150b, H150b, K151b, M100, R150b
Level 2 (Basic)	A250b, C250b, R250
Level 3 (Pre-intermediate)	A350, G/R350, G/W350, K350, L350, S350
Level 4 (Intermediate)	BJ480(Intensive Summer Class)
Level 5 (Upper-Intermediate)	HS500(Intensive Summer Class)

2. Notes on Attending Class

1. Be sure to register for classes. If you do not, you will not be able to take classes offered by this program.
2. You cannot register for classes after the deadline (May 14).
The deadline to register for classes taught in the latter half of the term is June 24.
3. Students enrolled at universities in and around Sendai are eligible to take classes. Relatives etc. of international students are not eligible to attend classes.
Those enrolled in universities other than Tohoku University are eligible to take classes if they are Level 2 or higher.
4. ~~Read the syllabus before registering for classes to learn about class goals, content, and how performance is evaluated. If you have questions about registration or class content, please come to Registration Guidance (p.4).~~

Syllabus: <http://www.he.tohoku.ac.jp/SJLE/syllabi/> (after March 25)

5. Please purchase your textbooks at the bookstore in the Kawauchi Campus Welfare Facilities (see B01 in the Kawauchi Campus Map). Using copied textbooks (paper photocopies, or digital copies downloaded from the Internet) in class is forbidden. Students using such copies will not be permitted to attend class. Making illegal copies of copyrighted materials is forbidden under Japanese law.
6. Class sizes are limited. Students will be accepted on a first-come basis, so you may not be able to take all your first-choice classes.

Intensive Learning Classes up to Pre-intermediate (excluding H150 and K151), RS030, RS030, RS030	Limit: 10
C100, C110, H150, C200, C210, C220, I220, N480, CC430, PE430, SC430, L590, N580, CD500, DU500, HG500, ML500, PA500, L690, S690, R690, W690, BJ680, GC680, HR600, JB600, PL600, SE600	Limit: 15
K151, K101, C320, S300, C440, S400, S500	Limit: 20
Other	Limit: 25

7. If you must be absent from class, inform the instructor directly or via a classmate. If you do not attend at least two-thirds of the total number of classes, you will receive a "D" (fail).
8. Important notices are posted on the bulletin boards on the south side of Lecture Room building A (see A02 in the Kawauchi Campus Map). Please check these periodically.
9. Failure to follow the above rules may result in losing eligibility to attend classes in this program.

3. Orientation and Registration Guidance

Orientation and Registration Guidance will be held as per the below schedule. Please attend one of the following sessions if you can.

【Canceled】

	1 st	2 nd
Date/ Time	April 17 (Fri) 10:50~11:50	April 22 (Wed) 12:15~13:00
Place	B104	A302

Orientation and Registration Guidance will be held separately for the Intensive Japanese Language Course students.

4. Level and Subject Codes

1. Japanese levels are numbered 1 through 6. Attainment goals are shown in the below table.

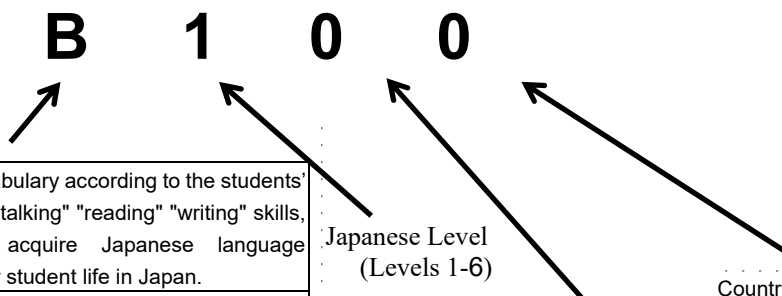
	Attainment Goals	CEFR/JFS	JLPT
		Level 1 (Beginner)	Students will acquire conversation, reading, and writing abilities necessary for daily life.
Level 2 (Basic)	Students will acquire speaking, listening, reading, and writing abilities for a variety of everyday situations.	A2.1	N4
Level 3 (Pre-intermediate)	Students will acquire basic Japanese skills needed for student life and attending university classes in Japan.	A2.2	N3
Level 4 (Intermediate)	Students will acquire skills needed to read articles and essays on familiar topics of interest and write simple reports. They will also learn to listen to lectures and express their own opinions in Japanese.	B1	N2
Level 5 (Upper-Intermediate)	Students will acquire Japanese skills needed to read academic texts, write reports, listen to lectures, and make presentations.	B2	N1
Level 6 (Advanced)	Students will acquire Japanese skills needed to understand specialized academic texts, write reports, listen to lectures related to their majors, and give seminar presentations.	C1	

CEFR: Common European Framework of Reference for Languages

JFS: JF Standard for Japanese-Language Education

JLPT: Japanese Language Proficiency Test

2. Please see below for an explanation of Subject Codes.



Abbreviated Class Subject

C(Comprehensive Japanese)	Learn grammar and vocabulary according to the students' level, extend "listening" "talking" "reading" "writing" skills, and comprehensively acquire Japanese language proficiency necessary for student life in Japan.
B (Basic Japanese for Business Communication)	Learn elementary conversational skills needed for various aspects of everyday life in Japan, and simple expressions used in business.
I (Beginning/Basic Japanese for Interaction)	Learn basic grammar, acquire listening, speaking, reading, and writing skills. Emphasis will be placed on acquiring communication skills.
G (Grammar)	Study grammar, build fundamental Japanese skills.
L (Listening Comprehension)	Acquire listening skills necessary for student life, such as listening to lectures, understanding explanations, and so on.
S (Speaking/Conversation)	Acquire speaking skills necessary to student life, learn to make oral presentations.
R (Reading Comprehension)	Acquire fundamental reading comprehension skills necessary to read specialized/academic texts.
W (Writing/Composition)	Acquire fundamental writing skills necessary to write research plans, research papers, etc.
A(Applicative Practice)	Acquire the ability to apply the Japanese language.
H (Hiragana/Katakana)	Learn hiragana and katakana syllabaries.
K (Kanji/Vocabulary)	Learn kanji and its related vocabulary.

Japanese Level
(Levels 1-6)

Priority/Exclusive Program

0	No Priority/ Non-exclusive
1	JYPE/COLABS
2	IPLA
3	DEEp-BridgeU (DEEp-Bridge undergraduate students)
4	IPLA/DEEp-BridgeU
5	Intensive Japanese Language Program
6	Japan-Korea Cooperative Program
7	GPEM
8	DATEntre (Employment Support Program)
9	General Education

Countries that use/do not use Chinese characters

0	No restrictions
1	For students from countries that do not use Chinese characters
2	For students from countries that use Chinese characters

5. Grading and Progression System

1. The grading scale for this program is as follows.

AA	Particularly excellent (90-100 points).
A	Excellent (80-89 points).
B	Good (70-79 points).
C	Passed (60-69 points).
D	Failed (0-59 points).
E	Withdrew from the class.

You will be notified of your grades at the end of each term. Upon request, your academic advisor can be notified of your grades too.

If you wish to withdraw from a class, contact the class's instructor. JYPE, COLABS, IPLA, and DEEP-BridgeU (DEEP-Bridge undergraduate) students should contact the Student Exchange Division. If you stop attending class without withdrawing, you will receive a "D."

Deadlines for dropping classes are as follows.

Term-long Classes: June 12

Half-term Classes (first part of the term): May 22

Half-term Classes (second part of the term): July 10

You will also receive a "D" if you do not attend at least two-thirds of the total number of classes.

If you require an Academic Report (Rishuu Shoumeisho), please ask for it at the International Education Section of the Student Exchange Division (p.18).

In general, only JYPE, COLABS, IPLA, and DEEP-BridgeU students receive credit for classes registered in the Japanese Language Program; other students will not receive credit. However, some departments may approve credits for these classes. For details, inquire with the relevant staff at your department.

2. This program's progression system is as follows.

JYPE(Level 1-2), COLABS(Level 1-2), IPLA(Level 1-2), and DEEP-BridgeU Students

If you obtain a C or better, and your credits are approved, you may proceed to the next difficulty level the following term.

Students in Intensive Learning Classes

If you obtain a grade of "A" or better in C150 or C250, you may take classes that are one difficulty level higher than your current level in the second half of the term. If you obtain a grade of "B" or "C" in C150 or C250, you may proceed to the next "Tentative" difficulty level in the second half of the term.

Other students

If you fulfill the conditions indicated on the table below, you may proceed to the next difficulty level the following term without taking a placement test.

Current Term	Conditions	Following Term
Level 1	Obtain an "AA" or "A" grade in both C1 and K1.	→Level 2
Level 2	Obtain an "AA" or "A" grade in both C2 and K2.	→Level 3
Level 3	1. Obtain an "AA" or "A" grade in C3 or C4. 2. Obtain 2 "AA" or "A" grades in both L/S or R/W and another Level 3 or 4 course.	→Level 4
Level 4	or 3. Obtain more than 3 "AA" or "A" grades in Level 3 or 4 courses other than C3, C4, L/S or R/W.	→Level 5
Level 5	1. Obtain 2 "AA" or "A" grades in both C5 and another level 5 course, or 2. Obtain more than 3 "AA" or "A" grades in level 5 courses other than C5.	→Level 6

*Obtaining 2 "B" grades is considered equal to obtaining an "A"

6. Eligibility for Classes

Classes that can be taken at each level are as follows.

If your level is marked "Tentative," you may register for classes both at your tentative level, and one level below. (E.g. if you are "Level 4 (Tentative)," you may register for both Level 4 and Level 3 classes at the same time.)

If you are a JYPE, COLABS, IPLA, or DEEP-BridgeU student you must register for classes either in your tentative level, or one level below. You cannot register for classes both at your tentative level and one level below at the same time. (E.g. if you are "Level 4 (Tentative)," you must choose whether to register for Level 3 classes or Level 4 classes.)

2. Levels		Comprehensive	Listening	Speaking	Reading	Writing	Application/ Practical	Kana	Miscellaneous
1	2 (Tentative)	C100, C110, C150, M100			R150		A150	H150a, H150b	
2		C200, C210, C220, C250a, C250b, C250c, I220			R250		A250a, A250b, A250c		
3	3 (Tentative)	C320	L/S310		R/W310		A350		
			L300 L350	S300 S350	R300 G/R350	W300 G/W350			
4	4 (Tentative)	C440	L/S410		R/W410				N480, BJ480, CC430, PE430, SC430, , RS030*
			L400	S400	R400	W400			
5	5 (Tentative)	C500	L590	S500	R500	W500			BJ480, N580, DU500 HG500, JL500 ML500, HS500, PA500, RS030*
6			L690	S690	R690	W690			BJ680, DU500, HG500, JL500, ML500, HS500, PA500 GC680, JB600 PL600, SE600, CL600, RS030*

- Classes marked with an asterisk (*) are exclusively for that program's students. Students from other programs cannot take those classes.
- You cannot take 2 or more classes whose codes begin with the same letter (e.g. C210 and C220, R400 and R500 etc.). Also, you cannot simultaneously take C classes with L/S or R/W classes (however, you can simultaneously take L/S with S or L classes, and R/W with R or W classes).
- You must attend every session of class even if the class meets two or more times each week.
- If you are a JYPE, COLABS, or IPLA student continuing from the previous term, and your certificate is marked "J only" (e.g. J3only, J2only, etc.) you may register only for the designated "Japanese" classes in your exchange program and a Kanji class.
- If a two-letter code appears in the "Other" section, the class is a seminar. These are International Co-learning Seminars, except for classes marked CJ, SW, HS, PH and RS. International and Japanese students take International Co-learning Seminars together. They participate in discussions and cooperative projects to deepen their intercultural understanding. Special auditing students, non-degree students, undergraduate students, and graduate students can receive credit for International Co-learning Seminars if they register them as General Education subjects. For further details, inquire with your department's Academic Affairs Section.
- For kanji classes, please select just one class at your designated level, or one level below or above that level. (E.g. If your level is "K2," select one class at level K1, K2, or K3.) However, if the instructor does not give permission, you cannot take the class

Kanji Level	Kanji
K1	K101, K102, K151
K2	K201, K250
K3	K300, K350
K4	K400
K5	K500

7. Subjects and Timetable by Level

Level 1(Beginning)

Course Title	JLP course code	Class	The course schedule	Notes	Google Classroom Class code
Beginning Comprehensive Japanese	C100		Wed 4-5•Fri 4-5		xnjrwgy
	C110		Mon 1-2•Wed 1-2		swoaltd
	C150	a	Mon 1-2•Tue 1-2 Thu 1-2•Fri 1-2	Express	uufniic
		b	Mon 1-2•Tue 1-2 Thu 1-2•Fri 1-2	Express Course in the 2nd quarter	xdctcfh
Minimal Japanese	M100		Tue. 4-5•Thu 4-5	Course in the 2nd quarter	bh4xpww
Beginning Japanese Reading Comprehension	R150	a	Tue 4•Fri 3	Express	deh5bnv
		b	Tue 4•Fri 3	Express Course in the 2nd quarter	dx7jffc
Beginning Japanese Applicative Practice	A150	a	Tue 3	Express	n4eubir
		b	Tue 3	Express Course in the 2nd quarter	6gpt5x5
Hiragana/Katakana	H150	a	4/20 – 4/23		5qelkev
		b	6/18 – 6/22	Course in the 2nd quarter	2s6qof4
Beginning Japanese Kanji/Vocabulary	K101		Mon 3•Wed 3		idagu2k
	K151	a	Mon 3•Thu 3		jcwknej
		b	Mon 3•Thu 3	Course in the 2nd quarter	aqsjmgt

Timetable Course code Class Instructor (Classroom)

	1 8:50- 10:20	2 10:30- 12:00	3 13:00- 14:30	4 14:40- 16:10	5 16:20- 17:50
Mon	C150a Ms. Mikoda (R115) /C150b Ms.Mishima(R107)		K151a Ms. Azumi (C401) /K151b Ms. Seki (C402)		
	C110 Ms. Seki (C407)		K101 Ms. Mishima (C104)		
Tue	C150a Ms. Moriwaki (R115) /C150b Ms. Usui (R107)		A150a Mr. Nakamura (R115) /A150b Ms. Hayashi (R107)	R150a Ms. Hayashi (R115) /R150b Ms. Y Sato (R107)	
				/M100 Ms Abe(A402)	
Wed	C110 Ms. Kashiwagi (C406)		K101 Ms.Suzuki (C406)	C100 Ms. Usui (C103)	
Thu	C150a Ms. Azumi (R115) /C150b Ms.Mikoda (R107)		K151a Ms. Mikoda (C406) /K151b Ms. Kashiwagi (C407)	/M100 Mr. Choi (C201)	
	C150a Ms. Uchiyama (R115) /C150b Mr. Choi (R107)		R150a Ms. M. Takahashi (R115) /R150b Ms. Usui (R107)	C100 Ms. M. Takahashi (A305)	

Timetable②: H150

3days intensive course to master Hiragana and Katakana

	Class	1 8:50 ~ 10:20	2 10:30 ~ 12:00	3 13:00~ 14:30
Apr. 20 Mon	a	Ms. Mikoda		Ms. Azumi
Apr. 21 Tue	a	Ms. Moriwaki		Ms. Haiashi
Apr. 23 Thu	a	Ms. Azumi		Ms. Mikoda
June 18 Thu	b	Ms. Mikoda		Ms. Kashiwagi
June 19 Fri	b	Mr. Choi		Ms. Usui
June 22 Mon	b	Ms. Mishima		Ms. Seki

Class a: classroom R115
Class b: classroom R107

The classrooms which are titled with "R" are located in International Exchange Building (A12 in the Kawauchi Campus Map).

Level 2(Basic)

Course Title	JLP course code	Class	The course schedule	Notes	Google Classroom Class code
Basic Comprehensive Japanese	C200		Mon 4-5•Thu 4-5		v54bln3
	C210	a	Mon 1-2•Wed 1-2	a and b will provide the same contents. (same below)	zd4azsx
		b	Mon 1-2•Wed 1-2		6yvsla6
	C220		Wed 1-2•Fri 1-2		6vesimv
	C250	a	Mon 1-2•Tue 1-2 Thu 1-2•Fri 1-2	Express	qivlg46
b		Mon 1-2•Tue 1-2 Thu 1-2•Fri 1-2	Express Course in the 2nd quarter	07jxsbk	
Basic Japanese for Interaction	I220		Wed 1-2•Fri 1-2		Inzilty
Basic Japanese Reading Comprehension	R250		Tue 4•Fri 3	Express Course in the 2nd quarter	yxkai44
Basic Japanese Applicative Practice	A250	a	Tue 4	Express	anjggph
		b	Tue 3	Express Course in the 2nd quarter	e5hg3yr
Basic Japanese Kanji/Vocabulary	K201		Tue 3•Fri 3		5rk3exxx
	K202		Wed 3		zoqfdnw
	K250		Mon 3•Tue 3 Thu 3•Fri 3	Express	bhc2k7c

Timetable

	1 8:50-10:20	2 10:30-12:00	3 13:00-14:30	4 14:40-16:10	5 16:20-17:50
Mon	C250a Mr. Choi (R105) /C250b Ms. Mikoda (R115)		K250 Mr. Sugawara (C403)	C200 Mr. Choi (C103)	
	C210a Ms. Azumi (C404) C210b Ms. Uchiyama (C405)				
Tue	C250a Ms. Yokosawa (R105) /C250b Ms. Moriwaki (R115)		/A250b Ms. Hayashi (R115)	/R250 Ms. Hayashi (R115)	
			K250 Ms. Y.Sato (C405)		
			K201 Ms. Abe (C403)		
Wed	C210a Ms. Mishima (C304) C210b Ms. Suzuki (C307)		K202 Ms. Y Sato (C408)		
	C220 Ms. Backley (C402)				
	I220 Ms. Usui (C408)				
Thu	C250a Ms. Kashiwagi (R105) /C250b Ms. Azumi (R115)		K250 Ms. Saito (C402)	C200 Ms. Suzuki (C206)	
Fri	C250a Ms. Moriwaki (R105) /C250b Ms. Uchiyama (R115)		/R250 Ms. M. Takahashi (R115)	A250a Mr. Choi (R105)	
			K250 Ms. S Endo (C402)		
	C220 Ms. Azumi (C402)		K201 Ms. Moriwaki (C403)		
	I220 Ms. Backley (C408)				

The classrooms which are titled with "R" are located in International Exchange Building (A12 in the Kawauchi Campus Map).

Level 3 (Pre- Intermediate)

Course Title	JLP course code	The course schedule	Notes	Google Classroom Class code
Pre-Intermediate Comprehensive Japanese	C320	Wed 1-2•Fri 1-2		nmf4ob
Pre-Intermediate Japanese Reading Comprehension/Writing	R/W310	Wed 1-2		giwfgn
Pre-Intermediate Japanese Listening Comprehension/Speaking	L/S310	Mon 1-2		5its6q6
Pre-Intermediate Japanese Grammar/Reading	G/R350	Tue 1•Fri 1	Express Course in the 2nd quarter	7cn7ggg
Pre-Intermediate Japanese Grammar/Writing	G/W350	Tue 2•Fri 2	Express Course in the 2nd quarter	mku5elo
Pre-Intermediate Japanese Listening Comprehension	L300	Thu 4		qvjuaw3
	L350	Mon 1•Thu 1	Express Course in the 2nd quarter	pnauuxo
Pre-Intermediate Japanese Speaking/Conversation	S300	Fri 4		uopksl3
	S350	Mon 2•Thu 2	Express Course in the 2nd quarter	y3ro5az
Pre-Intermediate Japanese Reading Comprehension	R300	Tue 1		rwyhepr
Pre-Intermediate Japanese Writing/Composition	W300	Mon 4		hq6woxa
Pre-Intermediate Japanese Applicative Practice	A350	Fri 4	Express Course in the 2nd quarter	opukiz6
Pre-Intermediate Japanese Kanji/Vocabulary	K300	Tue 3•Fri 3		p2ullcj
	K350	Mon 3•Tue 3 Thu 3•Fri 3	Express Course in the 2nd quarter	7qv2t3o

Timetable

	1 8:50-10:20	2 10:30-12:00	3 13:00-14:30	4 14:40-16:10	5 16:20-17:50
Mon	/L350 Mr. Choi (R105) L/S310 Ms. Yokosawa (C306)	/S350 Mr. Choi (R105)	/K350 Mr. Sugawara (C403)	W300 Ms.Uchiyama (C406)	
Tue	/G/R350 Ms. Yokosawa (R105) R300 Mr. Uehara (C406)	/G/W350 Ms. Yokosawa (R105)	/K350 Ms. Y Sato (C405) K300 Ms. Moriwaki (C404)		
Wed	C320 Ms. Azumi (C403) R/W310 Ms. Mikoda (C202)				
Thu	/L350 Ms. Kashiwagi (R105)	/S350 Ms. Kashiwagi (R105)	/K350 Ms. Saito (C402)	L300 Ms Azumi (C407)	
Fri	/G/R350 Ms. Moriwaki (R105) C320 Ms. Usui (C403)	/G/W350 Ms. Moriwaki (R105)	/K350 Ms. S Endo (C402) K300 Ms. Backley (C204)	S300 Ms. Mikoda (C302) /A350 Mr. Choi (R105)	

The classrooms which are titled with "R" are located in International Exchange Building (A12 in the Kawauchi Campus Map).

Level 4 (Intermediate)

Course Title	JLP course code	The course schedule	Notes	Google Classroom Class code
Intermediate Comprehensive Japanese	C440	Wed 1-2 Fri 1-2		2tbk42r
Intermediate Japanese Reading Comprehension/Writing	R/W410	Wed 1-2		tj3iw4g
Intermediate Japanese Listening Comprehension/Speaking	L/S410	Mon 1-2		ws7k7yb
Intermediate Japanese Listening Comprehension	L400	Thu 4		jhk6sof
Intermediate Japanese Speaking/Conversation	S400	Fri 4		o2fouzy
Intermediate Japanese Reading Comprehension	R400	Tue 2		bx6kvho
Intermediate Japanese Writing/Composition	W400	Tue 1		otrmieu
Intermediate Japanese Kanji/Vocabulary	K400	Wed 3 Fri 3		hbzm3ng
Intermediate Japanese for JLPT N2	N480	Thu 3		gvyv6wz
Intermediate Business Japanese	BJ480	Intensive Summer Class 8/20-8/25	Classroom: R105 First class: 8/20, 10:30-14:30 xupoko@gmail.com Replace * with @. Those who wish to enroll should send an email to the address above by July 1.	lohxzps
Intermediate Research Seminar	RS030	a Tue 5	Only DEEP-Bridge U students	q7oenq5
		b Wed 4		oji4lec
		c Tue 4		5gfo6rf

Intermediate Co-learning Seminar Title	JLP course code	The course schedule	Notes	Google Classroom Class code
Cross-cultural Communication	CC430	Tue 3	Course Code: CB23106	5xma5pj
Developing Performative Exercises for Japanese Conversation	PE430	Wed 3	Course Code: CB33114	zjnfk3x
Seeing Home Country and Area from Japan	SC430	Fri 4	Course Code: CB54107	y4gtikx

Timetable

	1 8:50-10:20	2 10:30-12:00	3 13:00-14:30	4 14:40-16:10	5 16:20-17:50
Mon	L/S410 Mr. Sugawara (C403)				
Tue	W400 Ms. A. Takahashi (C407)	R400 Mr. Uehara (C407)	CC430 Ms. Suematsu (A404)	RS030c Ms. S Sato (C408)	RS030a Mr. Nakamura (C104)
Wed	C440 Mr. Soejima (C404)		K400 Ms. Mikoda (C402)	RS030b Ms. Hayashi (C104)	
	R/W410 Ms. Uchiyama (C301)		PE430 Ms. Backley (C307)		
Thu			N480 Mr. Seto (C404)	L400 Ms. Mikoda (C406)	
Fri	C440 Ms. Mishima (C404)		K400 Ms. Uchiyama (C404)	S400 Mr. Sugawara (C303)	
				SC430 Ms. Mishima (C406)	

☐ : Co-learning Seminar(p.7)

Level 5 (Upper-Intermediate)

Course Title	JLP course code	Clas s	The course schedule	Notes	Google Classroom Class code
Upper-Intermediate Comprehensive Japanese	C500		Fri 1-2		vez7fpb
Upper-Intermediate Japanese Listening Comprehension	L590		Thu 2	General Education : Japanese A-1, A-2 Course Code : CB42123, CB42124	cf. ISTU
Upper-Intermediate Japanese Reading Comprehension	R500		Tue 4		x522vqr
Upper-Intermediate Japanese Speaking/Conversation	S500		Fri 4		ik7mvp3
Upper-Intermediate Japanese Writing/Composition	W500		Wed 4		xe36c4u
Upper-Intermediate Japanese Kanji/Vocabulary	K500	a	Wed 5	a and b will provide the same contents.	ghm4lgl
		b	Thu 3		e4a7hr3
Upper-Intermediate Japanese for JLPT N1	N580		Wed 3		xbfyzpg
Upper-Intermediate Japanese Culture Seminar: An Introduction to Early Modern Handwritten Sources	HS500		Intensive Summer Class 8/17-8/21	Classroom: R115 First class: 8/17, 8:50-16:10 kenichiro.aratake.c2*tohoku.ac.jp Replace * with @. Those who wish to enroll should send an email to the address above by July 1.	3lzu47z
Upper-intermediate Research Seminar: Practical Japanese for Academic Research	PA500		Tue 2		czkieqr
Upper-Intermediate Research Seminar	RS030	a	Tue 5	Only DEEP-Bridge U students	q7oenq5
		b	Wed 4		oji4lec
		c	Tue 4		5gfo6rf

Upper-Intermediate Co-learning Seminar Title	JLP course code	The course schedule	Notes	Google Classroom Class code
Deepening One's Understanding of Oneself and Others	DU500	Wed 5	Course Code: CB35102	4o4ay76
How to Build a Global Career	HG500	Tue 4	Course Code: CB24114	ey5bvrn
Japanese Language in Contrast	JL500	Wed 2	Course Code: CB32114	wp62suv
Japanese Modern Literature	ML500	Thu 4	Course Code: CB44108	kk4umhi

Timetable

	1 8:50-10:20	2 10:30-12:00	3 13:00-14:30	4 14:40-16:10	5 16:20-17:50	
M						
Tue		PA500 Ms. Sugaya (C406)		R500 Ms. yokosawa (C406) HG500 Ms. Monma (A403) RS030c Ms. S Sato (C408)	RS030a Mr. Nakamura (C104)	
			N580 Mr. K Endo (C404)	W500 Ms. S. Sato (C405) RS030b Ms. Hayashi (C104)		K500a Ms. Hayashi (C104) DU500 Ms. Kojima (A305)
				K500b Ms. Hayashi (C403)		ML500 Ms. M Mushiake (A305)
Fri	C500 Mr. Sugawara (C405)			S500 Mr. Ichinose (C304)		

☐ : Co-learning Seminar (p.7)

Level 6 (Advanced)

Course Title	JLP course code	Class	The course schedule	Notes	Google Classroom Class code
Advanced Japanese Listening Comprehension	L690		Tue 2	General Education : Japanese E-1, E-2 Course Code : CB22137, CB22148	n72xgsr
Advanced Japanese Speaking/Conversation	S690		Thu 1	General Education : Japanese C-1, C-2 Course Code : CB41114, CB41115	cf. ISTU.
Advanced Japanese Reading Comprehension	R690		Tue 3	General Education : Japanese I-1, I-2 Course Code : CB23125, CB23132	6srisvz
Advanced Japanese Writing/Composition	W690		Thu 3	General Education : Japanese G-1, G-2 Course Code : CB43108, CB43109	cf. ISTU
Advanced Business Japanese	BJ680		Thu 6		5hjkn4
Advanced Japanese Culture Seminar: Japanese Classical Literature	CL600		Wed 3		bkazmoz
Advanced Research Seminar	RS030		Tue 5	Only DEEP-Bridge U students	q7oenq5
			Wed 4		oji4lec
			Tue 4		5gfo6rf

Advanced Co-learning Seminar Title	JLP course code		The course schedule	Notes	Google Classroom Class code
Global Communication	GC680		Tue 1	Course Code : CB21127	cf. ISTU
Understanding of Human Resources Management Systems on Japanese Companies and How to Work	HR600		Wed 5	Course Code : CB35103	oihlivp
Buddhism and Japan	JB600	a	Tue 2	Course Code : CB22106	4rbq3sb
		b	Wed 2	Course Code : CB12206	wtnxc7o
Intercultural Communication Studies :Application, Personal Leadership	PL600		Mon 2	Course Code : CB12119	cf. ISTU
Japanese Society from External Perspectives	SE600		Tue 4	Course Code : CB24113	vx4z2yx

Timetable

	1 8:50-10:20	2 10:30-12:00	3 13:00-14:30	4 14:40-16:10	5 16:20-17:50	6 18:00-19:30
Mon		PL600 Ms. Yamamoto (C307)				
Tue	GC680 Ms. Yamamoto (A303)	L690 Mr. Soejima (C402)	R690 Ms. Sugaya (C402)	SE600 Mr. Nakamura (C104)	RS030a Mr. Nakamura (C104)	
		JB600a Mr. Klautau (C305)		RS030c Ms. Sato (C408)		
Wed		JB600b Mr. Klautau (C203)	CL600 Ms. S. Sato (C405)	RS030b Ms. Hayashi (C104)	HR600 Mr. Takeuchi (A403)	
Thu	S690 Mr. Yoshimoto (C104)		W690 Mr. Yoshimoto (C102)			BJ680 Ms. Suzuki (A205)
Fri						

: Co-learning Seminar (p.7)

8. Class Schedule by level

Level 1

	April	May	June	July	August
C100	4/22			7/29	
C110	4/20			7/27	
C150a	4/24		6/12		
C150b			6/23		8/6
M100			6/18	7/30	
R150a	4/24		6/12		
R150b			6/23		8/7
A150a	4/28		6/16		
A150b			6/23		8/4
H150a	4/20—4/23				
H150b			6/18—6/22		
K101	4/22			7/27	
K151a	4/27			7/23	
K151b			6/25		8/6

Level 2

	April	May	June	July	August
C200	4/20			7/20	
C210a	4/20			7/23	
C210b	4/20			7/22	
C220	4/22			7/24	
C250a	4/20		6/8		
C250b			6/15	7/27	
I220	4/22			7/24	
R250a			6/16	7/31	
A250a	4/24		6/5		
A250b			6/23		8/4
K201	4/21			7/24	
K202	4/22			7/29	
K250	4/20		6/5		

Level 3

	April	May	June	July	August
C320		5/1			8/7
R/W310	4/22			7/29	
L/S310	4/20			7/27	
G/R350			6/9	7/21	
G/W350			6/9	7/21	
L300	4/30			7/30	
L350			6/11	7/20	
S300		5/1		7/31	
S350			6/11	7/20	
R300	4/21			7/28	
W300	4/20			7/27	
A350			6/12	7/24	
K300	4/21			7/24	
K350			6/8	7/20	

Level 4

	April	May	June	July	August
C440	4/24				8/5
R/W410	4/22			7/29	
L/S410	4/20			7/20	
L400	4/30			7/30	
S400	4/24			7/24	
R400	4/21			7/28	
W400	4/21			7/28	
K400	4/22			7/24	
N480		5/7	6/25		
BJ480					夏季集中講義 8/20-8/24
CC430	4/21				8/4
PE430	4/22				8/5
SC430	4/24			7/31	
RS030a	4/21				8/4
RS030b	4/22				8/5
RS030c	4/21				8/4

Level 5

	April	May	June	July	August
C500	4/24			7/24	
L590	4/23				8/6
R500	4/28				8/4
S500	4/24			7/24	
W500	4/22			7/29	
K500a	4/22			7/29	
K500b	4/23			7/23	
N580		5/6		6/24	
HS500					夏季集中講義 8/17-8/21
DU500	4/22				8/5
HG500	4/21				8/4
JL500	4/22				8/5
ML500	4/23			7/30	
PA500	4/21				8/4
RS030a	4/21				8/4
RS030b	4/22				8/5
RS030c	4/21				8/4

Level 6

	April	May	June	July	August
L690	4/21				8/11
S690	4/23				8/6
R690	4/21				8/11
W690	4/23				8/6
BJ680	4/23			7/30	
GC680	4/21				8/3
PL600	4/20			7/27	
SE600	4/21				8/4
HR600	4/22				8/5
JB600a	4/21				8/4
JB600b	4/22				8/5
CL600	4/22			7/29	
RS030a	4/21				8/4
RS030b	4/22				8/5
RS030c	4/21				8/4

9. E-learning Program【Canceled】

E-learning is a form of study using the Internet. It enables you to study Japanese using Japanese language learning programs and tools on the Web.

1. URLs for Japanese E-learning programs can be found below.

<http://nihongo-e-na.com/eng/>

<http://nihongo-e-na.com/jpn/>

~~2. ALC NetAcademy Japanese Course 2~~

~~This is an E-learning program used at Tohoku University. Using this program requires a Tohoku University student number and password. If you don't have an ID and password, please inquire at your department's Academic Affairs Section or General Affairs Section. It will take about one week to obtain them.~~

Levels	Basic through Intermediate
Course Type	Characters (1 unit), Reading (30 units), Listening (30 units), Vocabulary (300 units), Mini-Test (12 units)
Instructions	On campus: log in to https://netacademy.cite.tohoku.ac.jp/anet2/ (use your student ID number and password) Off campus: requires SRP authentication (attend the guidance session if you don't know how to do this)

~~3. e-learning Program Guidance~~

~~Guidance sessions for the e-learning program will be held as follows. At these sessions, we will explain how to use various online programs.~~

~~April 24 (Fri.): 13:00 - 14:30 (Google Classroom Class code:TBA)~~

~~May 1 (Fri.): 13:00 - 14:30 (Google Classroom Class code:TBA)~~

10. Contact Information

Inquiries about Japanese Classes

If you don't know which classes to register, or have problems with your classes, please ask your program coordinator. Please send an inquiry by email first. If you need to meet in person, please make an appointment by email.

Program Name	Coordinator (upper row : main coordinator in charge)	Department/Email Address
JYPE COLABS	Professor Satoshi UEHARA	Kawauchi Kita Campus, Kawakita Joint Building 520 Email: uehara * he.tohoku.ac.jp
	Associate Professor Kensaku SOEJIMA	Kawauchi Kita Campus, Kawakita Joint Building 517 Email: kensaku * tohoku.ac.jp
IPLA	Associate Professor Masako HAYASHI	Kawauchi Kita Campus, Kawakita Joint Building 519 Email: masako * tohoku.ac.jp
	Associate Professor Wataru NAKAMURA	Kawauchi Kita Campus, Kawakita Joint Building 523 Email: wataru.nakamura.a8 * tohoku.ac.jp
DEEP-Bridge	Associate Professor Masako HAYASHI	Kawauchi Kita Campus, Kawakita Joint Building 519 Email: masako * tohoku.ac.jp
	Associate Professor Wataru NAKAMURA	Kawauchi Kita Campus, Kawakita Joint Building 523 Email: wataru.nakamura.a8 * tohoku.ac.jp
Intensive Japanese Language Program	Associate Professor Wataru NAKAMURA	Kawauchi Kita Campus, Kawakita Joint Building 523 Email: wataru.nakamura.a8 * tohoku.ac.jp
	Associate Professor Masako HAYASHI	Kawauchi Kita Campus, Kawakita Joint Building 519 Email: masako * tohoku.ac.jp
Miscellaneous	Associate Professor Kensaku SOEJIMA	Kawauchi Kita Campus, Kawakita Joint Building 517 Email: kensaku * tohoku.ac.jp
	Professor Satoshi UEHARA	Kawauchi Kita Campus, Kawakita Joint Building 520 Email: uehara * he.tohoku.ac.jp

The location of the Kawakita Joint Building is shown on A07 in the Kawauchi Campus Map.
Replace * with @ in email addresses.

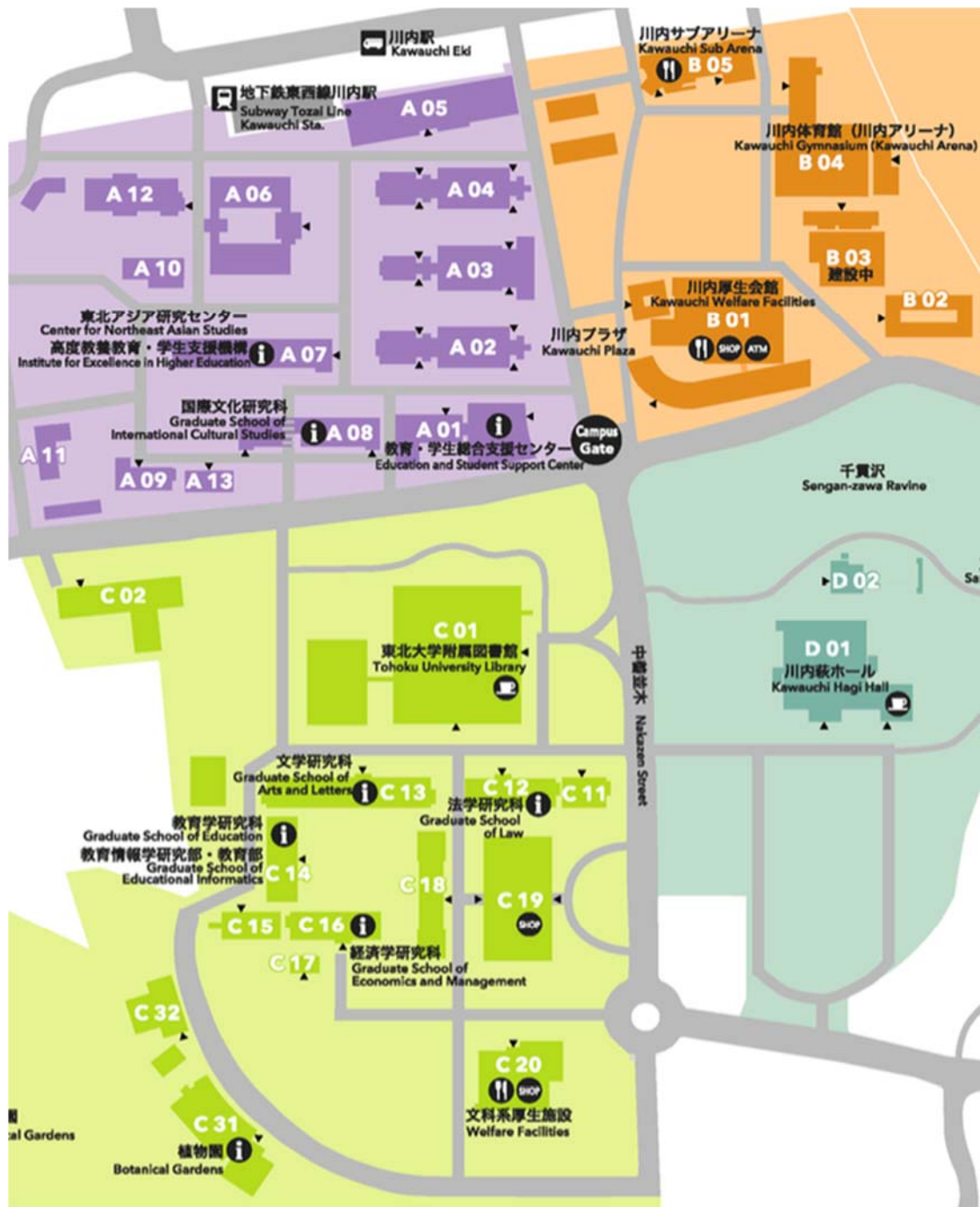
Inquiries about Official Procedures

(Class Registration, Issuance of Academic Reports (Rishuu Shoumeisho) etc.)

Student Exchange Division, International Education Section
Kawauchi Kita Campus Education and Student Support Center, 2F (see A01 in the Kawauchi Campus Map)
Phone: 022-795-7817
Email: sed2*grp.tohoku.ac.jp
Replace * with @ in email addresses

- Note: 1. We cannot respond to inquiries on weekends or holidays.
2. We do not issue hours certificates.

11. Kawauchi Campus Map



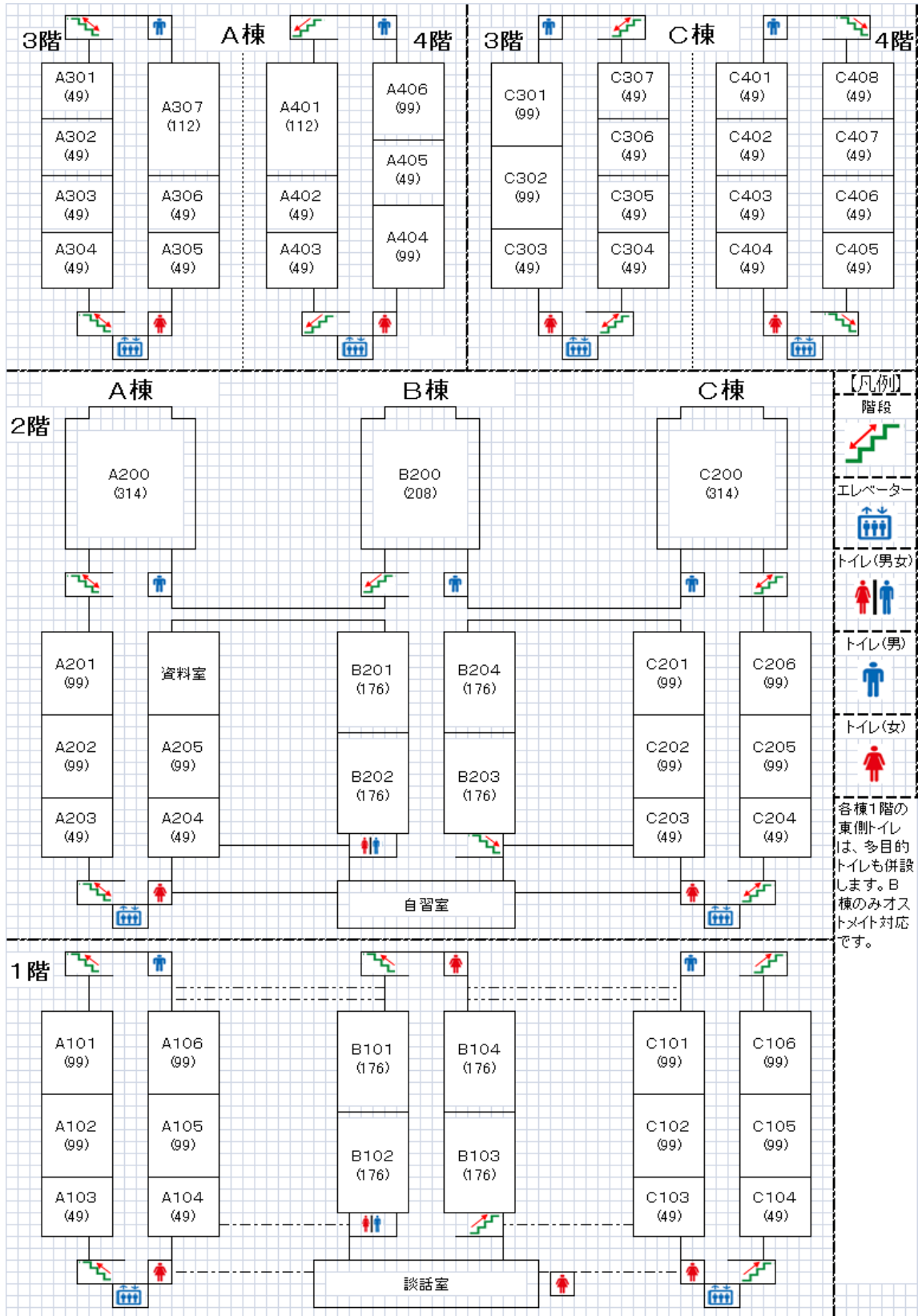
- A 01** 教育・学生総合支援センター
Education and Student Support Center
- A 02** 講義棟A棟
Lecture Rooms A
- A 03** 講義棟B棟
Lecture Rooms B
- A 04** 講義棟C棟
Lecture Rooms C
- A 05** マルチメディア教育研究棟 (教育情報基盤センター)
Multimedia Education and Research Center (Center for Information Technology in Education)
- A 06** 学生実験棟
Student Laboratories
- A 07** 川北合同研究棟
Kawanishi Research Forum
(高度教養教育・学生支援機構/東北アジア研究センター)
(Institute for Excellence in Higher Education / Center for Northeast Asian Studies)
- A 08** 国際文化研究棟
Graduate School of International Cultural Studies
- A 09** 保健管理センター
Student Health Care Center
- A 10** 教育研究基盤支援棟 4
Education and Research Base Support Building 4
- A 11** 教育研究基盤支援棟 5
Education and Research Base Support Building 5
- A 12** 国際交流棟
International Exchange Building
- A 13** 学生相談所
University Counseling Center

- B 01** 川内厚生会館
Kawauchi Welfare Facilities
- B 02** 川内サークル部室棟
Kawauchi Circle and Club Building
- B 03** 川内課外活動共用施設 (川内ホール)
Kawauchi Extracurricular Activity Shared Facilities (Kawauchi Hall)
- B 04** 川内体育館 (川内アリーナ)
Kawauchi Gymnasium (Kawauchi Arena)
- B 05** 川内サブアリーナ
Kawauchi Sub Arena

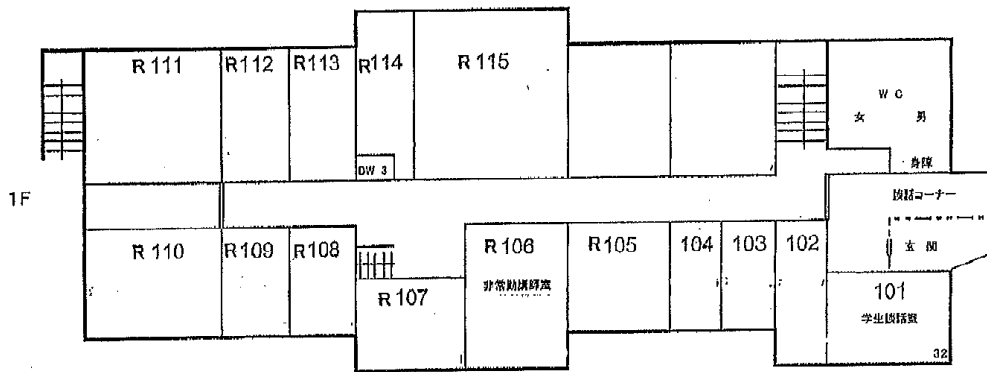
- C 01** 東北大学附属図書館
Tohoku University Library
- C 02** 入試センター
Admission Center
- C 11** 文・法合同研究棟
Arts and Letters / Law Joint Building
- C 12** 法学研究科棟
Graduate School of Law
- C 13** 文学研究科棟
Graduate School of Arts and Letters
- C 14** 文科系総合研究棟 (教育学研究科)
New Humanities Building (Graduate School of Education)
- C 15** 文科系合同研究棟
Humanities Building
- C 16** 経済学研究科棟
Graduate School of Economics and Management
- C 17** 経済学研究科演習室
Seminar Rooms
- C 18** 中講義棟
Lecture Rooms
- C 19** 文科系総合講義棟
Lecture Rooms
- C 20** 文科系厚生施設 (メイプルパーク川内)
Welfare Facilities (Maple Park Kawauchi)

12. Classroom Locations

A, B, and C Classrooms (A02, A03, A04)



International Exchange Building (A12)



Multimedia Education and Research Complex (A05)

