

A Guide to the Tohoku University Japanese Language Program at Kawauchi (Updated October 4, 2019)

Second Term, AY 2019
Tohoku University Institute for Excellence in Higher Education

The Institute for Excellence in Higher Education offers the Japanese Language Program for International Students to improve the Japanese language proficiency of foreign students and researchers at Tohoku University, and other universities in Sendai. We hope that it will facilitate your everyday activities and research. There are a variety of classes, from beginner to advanced levels, so you can study at the Japanese level appropriate for you.

Table of Contents

1. Application/Class Registration
 2. Notes on Attending Class
 3. Orientation and Registration Guidance
 4. Level and Subject Codes
 5. Grading and Progression System
 6. Eligibility for Classes
 7. Subjects and Timetable by Level
 8. Class Schedule by level
 9. e-learning Program
 10. Contact Information
 11. Kawauchi Campus Map
 12. Classroom Locations
- Appendix: Class Registration Cards

Application/Class Registration Schedule
BE SURE TO REGISTER DURING THE REGISTRATION PERIOD!

Application Period: September 12 (Thu.) - October 17 (Thu.)

Registration Period: October 16 (Wed.) - 24 (Thu.)

Application Period for Half-Term Classes (Second Part of Term): November 21 (Thu.) - 28 (Thu.)

Registration Period for Half-Term Classes (Second Part of Term): December 3 (Tue.) - 11 (Wed.)

1. Application/Class Registration

Do you have a Tohoku University ID?	→YES	Are you an undergraduate JYPE, COLABS, IPLA, or DEEp-Bridge U student continuing from the fspring 2019 term?	→YES	You do not need to complete Step1: Application. You will be issued a Japanese Language Program number and certificate by email. Proceed to Step 2: Class Registration.				
			→NO	Were you notified of your Japanese level for the new term?	→YES	Will you take classes at that level?	→YES	→A
	NO				→NO		→B	
	→NO	Will you enter Tohoku University in the new term?		→YES	Do you belong to JYPE, COLABS, IPLA, DEEp-Bridge Undergraduate, the Intensive Japanese Language Course, or the Japan-Korea Cooperative Program?	→YES	→C	
→NO (Commuting from a local university)				→NO		→D		
					→NO (Commuting from a local university)	→E		

※You must submit an application even if you applied during the previous term.

Step 1: Application

A (enrolled at TU, have an assigned Japanese level, will not take the PT):

(1) Log in to the academic affairs system from the on-campus network to apply for classes.

URL: <https://jlpk.bureau.tohoku.ac.jp/entry/>

*Please be sure to register your Japanese Language Program number from the previous term and password with the system.

*Applications are accepted from September 12 to October 17.

Applications for classes taught in the latter half of the term are accepted from November 21 to November 28.

(2) You will receive a Japanese Language Program number and Excel file by email. The Excel file is for those who are taking the placement test, so you need not submit it.

(3) Later, you will be sent a certificate showing your Japanese level for the new term.

(4) After the term starts, please perform Step 2.

B-1 (enrolled at TU, beginner, will not take the PT):

(1) Log in to the academic affairs system from the on-campus network to apply for classes.

URL: <https://jlpk.bureau.tohoku.ac.jp/entry/>

*Please be sure to choose "beginner" at the question 12 on the system.

*Applications are accepted from September 12 to October 17.

Applications for classes taught in the latter half of the term are accepted from November 21 to November 28.

(2) You will receive a Japanese Language Program number and Excel file by email. The Excel file is for those who are taking the placement test, so you need not submit it. Instead, visit the following website for the important information regarding a pre-first class assignment for you:

URL: <http://www.he.tohoku.ac.jp/SJLE/kana/>

- (3) Later, you will receive a Level 1 (beginner) certificate.
- (4) After the term starts, please perform Step 2.

B-2 (enrolled at TU, studied Japanese before, will take the PT):

- (1) Log in to the academic affairs system from the on-campus network to apply for classes.
URL: <https://jlpk.bureau.tohoku.ac.jp/entry/>
 - * If you have a Japanese Language Program number and password from the previous term, please be sure to register them with the system.
 - *Applications are accepted from September 12 to October 17.
 - *Applications for classes taught in the latter half of the term* are accepted from November 21 to November 28.
- (2) You will receive a Japanese Language Program number and Excel file by email. You will also be provided a link to information on the placement test.
- (3) Take the online placement test.
- (4) Enter your test results in the Excel file and send it to the provided email address.
- (5) You will be sent a certificate showing your Japanese level. If you were notified of a level for the new term, but also have a level determined by your test result, your level will be whichever is higher.
- (6) After the term starts, please perform Step 2.

C-1 (not yet enrolled at TU, beginner, participating in the above programs, will not take the PT):

- (1) You will receive a Japanese Language Program number and Excel file by email. The Excel file is for those who are taking the placement test, so you need not submit it. Instead, visit the following website for the important information regarding a pre-first class assignment for you:
URL: <http://www.he.tohoku.ac.jp/SJLE/kana/>
- (2) Later, you will receive a Level 1 (beginner) certificate.
- (3) After entering TU, please perform Step 2.

C-2 (not yet enrolled at TU, studied Japanese before, participating in the above programs, will take the PT):

- (1) You will receive a Japanese Language Program number and Excel file by email. You will also be provided a link to information on the placement test.
- (2) Take the online placement test.
- (3) Enter your test results on the Excel file and send it to the provided email address.
- (4) You will be sent a certificate showing your Japanese level.
- (5) After entering TU, please perform Step 2.

D-1 (not yet enrolled at TU, beginner, general, will not take the PT):

- (1) After entering TU, log in to the academic affairs system from the on-campus network to apply for classes.
URL: <https://jlpk.bureau.tohoku.ac.jp/entry/>
 - *Please be sure to choose "beginner" at the question 12 on the system.
 - *Applications are accepted from September 12 to October 17.
 - *Applications for classes taught in the latter half of the term* are accepted from November 21 to November 28.
- (2) You will receive a Japanese Language Program number and Excel file by email. The Excel file is for those who are taking the placement test, so you need not submit it. Instead, visit the following website for the important information regarding a pre-first class assignment for you:
URL: <http://www.he.tohoku.ac.jp/SJLE/kana/>
- (3) Later, you will receive a Level 1 (beginner) certificate.
- (4) Please perform Step 2.

D-2 (not yet enrolled at TU, studied Japanese before, general, will take the PT):

- (1) After entering TU, log in to the academic affairs system from the on-campus network to apply for classes.
URL: <https://jlpk.bureau.tohoku.ac.jp/entry/>
 - *Applications are accepted from September 12 to October 17.
 - *Applications for classes taught in the latter half of the term* are accepted from November 21 to November 28.
- (2) You will receive a Japanese Language Program number and Excel file by email. You will also be provided a link to information on the placement test.
- (3) Take the online placement test.

- (4) Enter your test results in the Excel file and send it to the provided email address.
- (5) You will be sent a certificate showing your Japanese level.
- (6) Please perform Step 2.

E (not affiliated with TU, will take the PT):

- (1) Send an email to the below address, informing us of your desire to take classes in the Japanese Language Program.

Address: jlpk@g-mail.tohoku-university.jp

*Applications are accepted from September 12 to October 17.

Applications for classes taught in the latter half of the term are accepted from November 21 to November 28.

- (2) You will receive a survey by email.
- (3) Enter your answers on the survey form, and return it by email.
- (4) You will receive a Japanese Language Program number and Excel file by email. You will also be provided a link to information on the placement test.
- (5) Take the online placement test.
- (6) Enter your test results on the Excel file and send it to the provided email address.
- (7) If you are rated Level 2 (basic) or higher, you will be issued a Japanese Language Program number and certificate by email.
- (8) Please perform Step 2.

Step 2: Class Registration

- (1) Fill out the required items on the Class Registration Cards attached at the end of this guide.
- (2) Take your certificate and Class Registration Cards to classes suitable for your level; if you wish to register after attending the first class, ask for the instructor's permission.
 - *Class sizes are limited. Students will be accepted on a first-come basis.
 - *Some classes preferentially accept students from certain programs.
- (3) After receiving permission to take the class, give the Class Registration Card to the instructor.
 - *If the class is taught by multiple instructors, give the Class Registration Card to just one of them.
- (4) Log in to the academic affairs system and register your classes using the class registration screen.
 - URL: <https://jlpk.bureau.tohoku.ac.jp/student/login.php>
 - ※ You will only be able to register only classes for which you have received permission from the instructors.
 - ※ IPLA, and DEEp-Bridge U students will be informed about registration in a separate email. Do NOT register with the above system.
 - ※ Class registrations are accepted from October 16 to October 24.
 - ※ Registrations for classes taught in the latter half of the term* are accepted from December 3 to December 11.

*Courses in the latter half of the term

	JLP course code
Level 1 (Beginner)	M100
Level 2 (Basic)	C250, R250, A250b
Level 3 (Pre-intermediate)	L350, S350, G/R350, G/W350, A350, K350
Level 4 (Upper-Intermediate)	SW500, HS500

2. Notes on Attending Class

- 1. Be sure to register for classes. If you do not, you will not be able to take classes offered by this program.
- 2. You cannot register for classes after the deadline (October 24).
 - ※ The deadline to register for classes taught in the latter half of the term is December 11.

3. Students enrolled at universities in and around Sendai are eligible to take classes. Relatives etc. of international students are not eligible to attend classes.
 - ※ Those enrolled in universities other than Tohoku University are eligible to take classes if they are Level 2 or higher.
4. Read the syllabus before registering for classes to learn about class goals, content, and how performance is evaluated. If you have questions about registration or class content, please come to Registration Guidance (p.4).

Syllabus: <http://www.he.tohoku.ac.jp/SJLE/syllabi/> (after September 20)

5. Please purchase your textbooks at the bookstore in the Kawauchi Campus Welfare Facilities (see B01 in the Kawauchi Campus Map). Using copied textbooks (paper photocopies, or digital copies downloaded from the Internet) in class is forbidden. Students using such copies will not be permitted to attend class. Making illegal copies of copyrighted materials is forbidden under Japanese law.
6. Class sizes are limited. Students will be accepted on a first-come basis, so you may not be able to take all your first-choice classes.

Intensive learning Classes up to Pre-intermediate (excluding H150 and K151), R030	Limit: 10
C100, C110, C120, I120, B170, M100, H150, C200, C210, C220, B270, N480, IU430, SC430, PB480, L590, N580, CP530, HG500, JC530, JM500, JS500, LV500, MC500, JH530, PW500, L690, S690, R690, W690, BJ680, EP600, GC680, HR600, IC600, JB600, MH600, TW600, ML000	Limit: 15
K151, K101, K102, C320, S300, C440, S400, S500	Limit: 20
Other	Limit: 25

7. If you must be absent from class, inform the instructor directly or via a classmate. If you do not attend at least two-thirds of the total number of classes, you will receive a "D" (fail).
8. Important notices are posted on the bulletin boards on the south side of Lecture Room building A (see A02 in the Kawauchi Campus Map). Please check these periodically.
9. Failure to follow the above rules may result in losing eligibility to attend classes in this program.

3. Orientation and Registration Guidance

Orientation and Registration Guidance will be held as per the below schedule. Please attend one of the following sessions if you can.

	1st IPLA students & others	2 nd only JYPE/COLABS students	3 rd	4 th only DEEP-BridgeU student
Date/ Time	October 2 (Wed) 10:30~11:30	October 3 (Thu) 10:30~11:30	October 11 (Fri) 12:15~13:00	October 7 (Mon) October 8 (Tue) 12:10-12:50
Place	A401	A401	B101	R115

※ Orientation and Registration Guidance will be held separately for the Intensive Japanese Language Course students.

4. Level and Subject Codes

1. Japanese levels are numbered 1 through 6. Attainment goals are shown in the below table.

	Attainment Goals		
		CEFR/JFS	JLPT
Level 1 (Beginner)	Students will acquire conversation, reading, and writing abilities necessary for daily life.	A1	N5
Level 2 (Basic)	Students will acquire speaking, listening, reading, and writing abilities for a variety of everyday situations.	A2.1	N4
Level 3 (Pre-intermediate)	Students will acquire basic Japanese skills needed for student life and attending university classes in Japan.	A2.2	N3
Level 4 (Intermediate)	Students will acquire skills needed to read articles and essays on familiar topics of interest and write simple reports. They will also learn to listen to lectures and express their own opinions in Japanese.	B1	N2
Level 5 (Upper-Intermediate)	Students will acquire Japanese skills needed to read academic texts, write reports, listen to lectures, and make presentations.	B2	N1
Level 6 (Advanced)	Students will acquire Japanese skills needed to understand specialized academic texts, write reports, listen to lectures related to their majors, and give seminar presentations.	C1	

CEFR: Common European Framework of Reference for Languages

JFS: JF Standard for Japanese-Language Education

JLPT: Japanese Language Proficiency Test

2. Please see below for an explanation of Subject Codes.

B 1 0 0

C(Comprehensive Japanese)	Learn grammar and vocabulary according to the students' level, extend "listening" "talking" "reading" "writing" skills, and comprehensively acquire Japanese language proficiency necessary for student life in Japan.
B (Basic Japanese for Business Communication)	Learn elementary conversational skills needed for various aspects of everyday life in Japan, and simple expressions used in business.
I (Beginning/Basic Japanese for Interaction)	Learn basic grammar, acquire listening, speaking, reading, and writing skills. Emphasis will be placed on acquiring communication skills.
G (Grammar)	Study grammar, build fundamental Japanese skills.
L (Listening Comprehension)	Acquire listening skills necessary for student life, such as listening to lectures, understanding explanations, and so on.
S (Speaking/Conversation)	Acquire speaking skills necessary to student life, learn to make oral presentations.
R (Reading Comprehension)	Acquire fundamental reading comprehension skills necessary to read specialized/academic texts.
W (Writing/Composition)	Acquire fundamental writing skills necessary to write research plans, research papers, etc.
A(Applicative Practice)	Acquire the ability to apply the Japanese language.
H (Hiragana/Katakana)	Learn hiragana and katakana syllabaries.
K (Kanji/Vocabulary)	Learn kanji and its related vocabulary.

0	No Priority/ Non-exclusive
1	JYPE/COLABS
2	IPLA
3	DEEp-BridgeU (DEEp-Bridge undergraduate students)
4	IPLA/DEEp-BridgeU
5	Intensive Japanese Language Course
6	Japan-Korea Cooperative Program
7	GPEM
8	DATEntre (Employment Support Program)
9	General Education

0	No restrictions
1	For students from countries that do not use Chinese characters
2	For students from countries that use Chinese characters

5. Grading and Progression System

1. The grading scale for this program is as follows.

AA	Particularly excellent (90-100 points).
A	Excellent (80-89 points).
B	Good (70-79 points).
C	Passed (60-69 points).
D	Failed (0-59 points).
E	Withdrew from the class.

- ※ You will be notified of your grades at the end of each term. Upon request, your academic advisor can be notified of your grades too.
- ※ If you wish to withdraw from a class, contact the class's instructor. JYPE, COLABS, IPLA, and DEEP-BridgeU (DEEP-Bridge undergraduate) students should contact the Student Exchange Division. If you stop attending class without withdrawing, you will receive a "D."
- ※ Deadlines for dropping classes are as follows.
Term-long Classes: November 28
Half-term Classes (first part of the term): November 14
Half-term Classes (second part of the term): December 25
- ※ You will also receive a "D" if you do not attend at least two-thirds of the total number of classes.
- ※ If you require an Academic Report (Seiseki Shoumeisho), please ask for it at the International Education Section of the Student Exchange Division (p.18).
- ※ In general, only JYPE, COLABS, IPLA, and DEEP-BridgeU students receive credit for classes registered in the Japanese Language Program; other students will not receive credit. However, some departments may approve credits for these classes. For details, inquire with the relevant staff at your department.

2. This program's progression system is as follows.

JYPE(Level 1-2), COLABS(Level 1-2), IPLA(Level 1-2), and DEEP-BridgeU Students

If you obtain a C or better, and your credits are approved, you may proceed to the next difficulty level the following term.

Other students

If you fulfill the conditions indicated on the table below, you may proceed to the next difficulty level the following term without taking a placement test.

Current Term	Conditions	Following Term
Level 1	Obtain an "AA" or "A" grade in both C1 and K1.	→Level 2
Level 2	Obtain an "AA" or "A" grade in both C2 and K2.	→Level 3
Level 3	1. Obtain an "AA" or "A" grade in C3 or C4, or 2. Obtain more than 3 "AA" or "A" grades in Level 3 or 4 courses* other than C3 and C4.※	→Level 4
Level 4		→Level 5
Level 5	1. Obtain 2 "AA" or "A" grades in both C5 and another level 5 course*, or 2. Obtain more than 3 "AA" or "A" grades in level 5 courses* other than C5.※	→Level 6

* Excluding K's grades.

※Obtaining 2 "B" grades is considered equal to obtaining an "A"

6. Eligibility for Classes

Classes that can be taken at each level are as follows.

- ※ If your level is marked "Tentative," you may register for classes both at your tentative level, and one level below. (E.g. if you are "Level 4 (Tentative)," you may register for both Level 4 and Level 3 classes at the same time.)
- ※ If you are a JYPE, COLABS, IPLA, or DEEp-BridgeU student you must register for classes either in your tentative level, or one level below. You cannot register for classes both at your tentative level and one level below at the same time. (E.g. if you are "Level 4 (Tentative)," you must choose whether to register for Level 3 classes or Level 4 classes.)

Levels		Comprehensive	Speaking	Listening	Reading	Writing	Application/ Practical	Kana	Miscellaneous
1	2 (Tentative)	C100, C110, C120, C150*, I120, B170, M100			R150*		A150*	H150	E000
2	3 (Tentative)	C210, C220, C250a, C250b*, B270			R250*		A250a A250b*		E000, ML000
3	4 (Tentative)	C320	L/S310		R/W310		A350*		E000, ML000
			S300 S350	L300 L350	R300 G/R350	W300 G/W350			
4	5 (Tentative)	C440	L/S410		R/W410				N480, IU430, SC430, PB480, RS030*, E000, ML000
			S400	L400	R400	W400			
5	6 (Tentative)	C560	S500	L590	R500	W500	A560*		PB480, N580, CJ500, SW500, HS500, CP530, HG500, JC530, JH530, JM500, JS500, LV500, MC500, PW500, RS030, ML000, E000
6			S690	L690	R690	W690			PB480, CJ500, SW500, HS500, CP530, HG500, JC530, JH530, JM500, JS500, LV500, MC500, PW500, BJ680, PH600, EP600, GC680 HR600, IC600, JB600, MH600, TW600, RS030*, ML000, E000

1. Classes marked with an asterisk (*) are exclusively for that program's students. Students from other programs cannot take those classes.
2. You cannot take more than 1 class whose codes begin with the same letter (e.g. C210 and C220, R400 and R500 etc.). You may take L/S and S or L classes. R/W and R or W classes at the same time.
3. You must attend every session of class even if the class meets two or more times each week.
4. If you are a JYPE, COLABS, or IPLA student continuing from the previous term, and your certificate is marked "J only" (e.g. J3only, J2only, etc.) you may register only for the designated "Japanese" classes in your exchange program and a Kanji class.
5. If a two-letter code appears in the "Other" section, the class is a seminar. These are International Co-learning Seminars, except for classes marked CJ, SW, HS, PH and RS. International and Japanese students take International Co-learning Seminars together. They participate in discussions and cooperative projects to deepen their intercultural understanding. Special auditing students, non-degree students, undergraduate students, and graduate students can receive credit for International Co-learning Seminars if they register them as General Education subjects. For further details, inquire with your department's Academic Affairs Section.
6. For kanji classes, please select just one class at your designated level, or one level below or above that level. (E.g. If your level is "K2," select one class at level K1, K2, or K3.) However, if the instructor does not give permission, you cannot take the class.

Kanji Level	Kanji
K1	K101, K102, K151
K2	K201, K250
K3	K300, K350
K4	K400
K5	K500

7. Subjects and Timetable by Level

Level 1(Beginning)

Course Title	JLP course code	Class	The course schedule	Notes
Beginning Comprehensive Japanese	C100	a	Tue 4-5・Thu 4-5	a、b、and c will provide the same contents. (same below)
		b	Tue 1-2・Fri 1-2	
		c	Wed 4-5・Fri 4-5	
	C110	a	Mon 1-2・Thu 1-2	
		b	Mon 1-2・Thu 1-2	
		c	Mon 1-2・Thu 1-2	
C120		Wed 1-2・Fri 1-2		
C150		Mon 1-2・Tue 1-2 Thu 1-2・Fri 1-2	Only Intensive Japanese Language Course Students Express	
Beginning Japanese for Interaction	I120		Wed 1-2・Fri 1-2	
Beginning Japanese for Business Communication	B170		Wed 1-2	
Minimal Japanese	M100		Tue 4-5・Thu 4-5	
Beginning Japanese Reading Comprehension	R150		Tue 4・Fri 3	Only Intensive Japanese Language Course Students Express
Beginning Japanese Applicative Practice	A150		Tue 3	Only Intensive Japanese Language Course Students Express
Hiragana/Katakana	H150		10/3 – 10/7	
Beginning Japanese Kanji/Vocabulary	K101	a	Wed 3・Fri 3	For students who have Kanji background
		b	Mon 3・Thu 3	
	K102		Mon 3・Thu 3	
	K151		Mon 3・Thu 3	
e-learning	E000		Fri 3	

Timetable① Course code Class Instructor (Classroom)

	1 8 : 50- 10 : 20	2 10 : 30- 12 : 00	3 13 : 00- 14 : 30	4 14 : 40- 16 : 10	5 16 : 20- 17 : 50
Mon	C150 Ms. Mikoda (R115)	K151 Ms. Seki (C401)			
	C110a Ms. Mishima (C401) b Ms. Azumi (C402) c Ms. Seki (C403)	K101b Ms. Y. Sato (C402) K102 Ms. Mishima (C403)			
	C150 Ms. Ono (R115)	A150 Mr. Nakamura (R115)	R150 Ms. Hayashi(R115)		
Tue	C100b Ms. Abe (C401)		C100a Ms. Murakami (C105) M100 Ms. Uchiyama (C106)		
Wed	C120 Ms. Mishima (C401) I120 Ms. Usui (C402) B170 Ms. Backley (C403)	K101a Ms. Backley (C301)	C100c Ms. Usui (A402)		
	C150 Ms. Yamaguchi (R115)	K151 Mr. Choi (C401)	C100a Ms. Backley(A101)		
	C110a Ms. Ono (C401) b Ms. Kashiwagi (C402) c Mr. Sugawara (C403)	K101b Ms. Backley (C402) K102 Ms. Y. Sato (C403)	M100 Ms. Mikoda (A205)		
Fri	C150 Ms. Uchiyama (R115) C100b Ms. Azumi (C401) C120 Ms. Mikoda (C402) I120 Ms. Backley (C403)	R150 Ms. Usui (R115) K101a Mr. Choi(C401) E000 Ms. Oshitani(M203)	C100c Mr. Choi (A103)		

Timetable②: H150

3days intensive course to master Hiragana and Katakana

	1 8 : 50 ~ 10 : 20	2 10 : 30 ~ 12 : 00	3 13 : 00 ~ 14 : 30
10/3 (Thu)	Ms. Yamaguchi (R115)	Mr. Choi (C401)	
10/4 (Fri)	Ms. Uchiyama (R115)	Ms. Usui (R115)	
10/7 (Mon)	Ms. Mikoda (R115)	Ms. Seki (C401)	

※ The classrooms which are titled with "R" are located in International Exchange Building (A12 in the Kawauchi Campus Map).

Level 2(Basic)

Course Title	JLP course code	Class	The course schedule	Notes
Basic Comprehensive Japanese	C210	a	Mon 1-2・Thu 1-2	a、b will provide the same contents. (same below)
		b	Mon 1-2・Thu 1-2	
	C220	a	Wed 1-2・Fri 1-2	
		b	Wed 1-2・Fri 1-2	
	C250	a	Mon 1-2・Tue 1-2 Thu 1-2・Fri 1-2	b are only for Intensive Japanese Language Course Students Express
		b	Mon 1-2・Tue 1-2 Thu 1-2・Fri 1-2	
Basic Japanese for Business Communication	B270		Wed1-2	
Basic Japanese Reading Comprehension	R250		Tue 4・Fri 3	Only Intensive Japanese Language Course Students Express
Basic Japanese Applicative Practice	A250	a	Tue 4	b are only for Intensive Japanese Language Course Students Express
		b	Tue 3	
Basic Japanese Kanji/Vocabulary	K201		Tue 3・Thu 3	
	K250		Mon 3・Tue 3 Thu 3・Fri 3	Express
Co-learning Seminar: Japanese Literature in English and Japanese	ML000		Thu 4	Course Code : CB44213
e-learning	E000		Fri 3	

Timetable

	1 8 : 50-10 : 20	2 10 : 30-12 : 00	3 13 : 00-14 : 30	4 14 : 40-16 : 10
Mon	C250a Mr. Choi (R107) b Ms. Mikoda (R115)		K250 Ms. Yokosawa (R115)	
	C210a Ms. Uchiyama (C404) b Ms. Yamaguchi (C405)			
Tue	C250a Ms. Yokosawa (R107) b Ms. Ono (R115)		A250b Mr. Nakamura (R115)	R250 Ms. Hayashi (R115)
			K250 Ms. Yokosawa (R107)	
			K201 Ms. Uchiyama (C401)	A250a Ms. Abe (R107)
Wed	C220a Ms. Miyu Takahashi (C404) b Ms. Kashiwagi (C405)			
	B270 Ms. Suzuki (C406)			
Thu	C250a Ms. Moriwaki (R107) b Ms. Yamaguchi (R115)		K250 Ms. Saito (R107)	ML000 Ms. Mushiake (A105)
	C210a Ms. Azumi (C404) b Ms. Suzuki (C405)		K201 Ms. Azumi (C404)	
Fri	C250a Ms. Moriwaki (R107) b Ms. Uchiyama (R115)		R250 Ms. Usui (R115)	
			K250 Mr. Sugawara (R107)	
	C220a Ms. Yamaguchi (C404) b Ms. Miyu Takahashi (C405)		E000 Ms. Oshitani (M203)	

※ The classrooms which are titled with "R" are located in International Exchange Building (A12 in the Kawauchi Campus Map).

※ : Co-learning Seminar (p. 7)

Level 3 (Pre- Intermediate)

Course Title	JLP course code	The course schedule	Notes
Pre-Intermediate Comprehensive Japanese	C320	Wed 1-2 · Fri 1-2	
Pre-Intermediate Japanese Listening/Comprehension & Speaking/Conversation	L/S310	Mon 1-2	
Pre-Intermediate Japanese Reading/Writing	R/W310	Thu 1-2	
Pre-Intermediate Japanese Grammar/Reading	G/R350	Tue 1 · Fri 1	Express
Pre-Intermediate Japanese Grammar/Writing	G/W350	Tue 2 · Fri 2	Express
Pre-Intermediate Japanese Listening Comprehension	L300	Wed4	
	L350	Mon1 · Thu1	Express
Pre-Intermediate Japanese Speaking/Conversation	S300	Tue2	
	S350	Mon2 · Thu2	Express
Preintermediate Japanese Reading Comprehension	R300	Tue1	
Pre-Intermediate Japanese Writing/Composition	W300	Thu3	
Pre-Intermediate Japanese Applicative Practice	A350	Tue4	Express
Pre-Intermediate Japanese Kanji/Vocabulary	K300	Tue3 · Fri3	
	K350	Mon 3 · Tue 3 Thu 3 · Fri 3	Express
Co-learning Seminar: Japanese Literature in English and Japanese	ML000	Thu 4	Course Code : CB44213
e-learning	E000	Fri 3	

Timetable

	1 8 : 50-10 : 20	2 10 : 30-12 : 00	3 13 : 00-14 : 30	4 14 : 40-16 : 10
Mon	L350 Mr. Choi (R107)	S350 Mr. Choi (R107)	K350 Ms. Yokosawa (R115)	
	L/S310 Ms. Yokosawa (C406)			
Tue	G/R350 Ms. Yokosawa (R107)	G/W350 Ms. Yokosawa (R107)	K350 Ms. Yokosawa (R107)	A350 Ms. Abe (R107)
	R300 Mr. Uehara (C402)	S300 Ms. Usui (C402)	K300 Ms. Abe (C402)	
Wed	C320 Ms. Azumi (C407)			L300 Ms. Murakami (A403)
Thu	L350 Ms. Moriwaki (R107)	S350 Ms. Moriwaki (R107)	K350 Ms. Saito (R107)	ML000 Ms. Mushiake (A105)
	R/W310 Ms. Mikoda (C406)		W300 Ms. Yamaguchi (C405)	
Fri	G/R350 Ms. Moriwaki (R107)	G/W350 Ms. Moriwaki (R107)	K350 Mr. Sugawara (R107)	
	C320 Ms. Usui (C406)		K300 Ms. Endo (C402)	
			E000 Ms. Oshitani (M203)	

※ The classrooms which are titled with "R" are located in International Exchange Building (A12 in the Kawauchi Campus Map).

※ : Co-learning Seminar (p. 7)

Level 4 (Intermediate)

Course Title	JLP course code	The course schedule	Notes
Intermediate Comprehensive Japanese	C440	Wed 1-2 · Fri 1-2	
Intermediate Japanese Listening/Comprehension & Speaking/Conversation	L/S410	Mon 1-2	
Intermediate Japanese Reading/Writing	R/W410	Thu 1-2	
Intermediate Japanese Listening Comprehension	L400	Wed 3	
Intermediate Japanese Speaking/Conversation	S400	Mon3	
Intermediate Japanese Reading Comprehension	R400	Tue 2	
Intermediate Japanese Writing/Composition	W400	Tue 1	
Intermediate Japanese Kanji/Vocabulary	K400	Mon5 · Fri 4	
Intermediate Japanese for JLPT N2	N480	Thu 3	
Research Seminar	RS030	a	Only DEEP-BridgeU Students a and b will provide the same contents.
		b	
e-learning	E000	Fri 3	

Intermediate Co-learning Seminar Title	JLP course code	The course schedule	Notes
Intercultural Understanding	IU430	Thu 2	Course Code : CB42213
Solve regional problems in Naruko Onsen through tourism business	PB480	Mon 5	Course Code : CB15214
Seeing Home Country and Area from Japan	SC430	Fri 3	Course Code : CB53213
Japanese Literature in English and Japanese	ML000	Thu 4	Course Code : CB44213

Timetable

	1 8 : 50-10 : 20	2 10 : 30-12 : 00	3 13 : 00-14 : 30	4 14 : 40-16 : 10	5 16 : 20-17 : 50
Mon	L/S410 Mr. Sugawara (C407)		S400 Mr. Sugawara (C404)		K400 Ms. Hayashi (A103) PB480 Ms. Watanabe (A102)
Tue	W400 Ms. A.Takahashi (M303)	R400 Mr. Uehara (C403)			RS030a Mr. Nakamura (C102)
Wed	C440 Mr. Soejima (C408)		L400 Ms. Kashiwagi (C304)	RS030b Ms. Hayashi (A405)	
Thu	R/W410 Ms. Uchiyama (C407)		N480 Mr. K.Endo(C406)	ML000 Ms. Mushiake (A105)	
		IU430 Ms. Watanabe (C101)			
Fri	C440 Ms. Mishima (C407)		SC430 Ms. Mishima (C307) E000 Ms. Oshitani (M203)	K400 Ms. Uchiyama (C401)	

※ : Co-learning Seminar(p.8)

Level 5 (Upper-Intermediate)

Course Title	JLP course code	Class	The course schedule	Notes
Upper-Intermediate Comprehensive Japanese	C560		Fri 1-2	
Upper-Intermediate Japanese Listening Comprehension	L590		Thu 2	General Education: B-1, B-2 Course Code: CB42203,CB42204
Upper-Intermediate Japanese Speaking/Conversation	S500		Tue 1	
Upper-Intermediate Japanese Reading Comprehension	R500		Mon 5	
Upper-Intermediate Japanese Writing/Composition	W500		Mon 4	
Upper-Intermediate Japanese Applicative Practice	A560		Tue 3	Only for Japan-Korea Cooperative Program Students
Upper-Intermediate Japanese Kanji/Vocabulary	K500	a	Mon 3	a, b will provide the same contents. (same below)
		b	Wed 5	
Upper-Intermediate Japanese for JLPT N1	N580		Wed 3	
Upper-Intermediate Japanese Culture Seminar: An introduction to Classical Japanese Writings	CJ500		Mon 4	
Upper-Intermediate Japanese Culture Seminar: An Introduction to Sino-Japanese Writings	SW500		Tue 4	
Upper-Intermediate Japanese Culture Seminar: An Introduction to Early Modern Handwritten Sources	HS500		Wed 5	
Research Seminar	RS030	a	Tue 5	Only DEEP-BridgeU Students
		b	Wed 4	
e-learning	E000		Fri 3	

Upper-Intermediate Co-learning Seminar Title	JLP course code	The course schedule	Notes
Collaborative Project	CP530	Wed 2	Course Code : CB32249
How to build a global career	HG500	Tue 3	Course Code : CB23249
Japanese Culture and Communication	JC530	Mon 3	Course Code : CB13223
Japanese honorific expressions useful for university life	JH530	Thu 3	Course Code : CB43244
Japanese Language and Culture in Movies	JM500	Tue 4	Course Code : CB24256
Japanese Language and Culture in Songs	JS500	Tue 5	Course Code : CB25218
Language Varieties in Japanese	LV500	Tue 1	Course Code : CB21206
Living in Multicultural Japanese Society	MC500	Fri 4	Course Code : CB54208
Playback Theater Workshop : advanced	PW500	Mon 3	Course Code : CB13220
Japanese Literature in English and Japanese	ML000	Thu 4	Course Code : CB44213

Timetable

	1 8 : 50-10 : 20	2 10 : 30-12 : 00	3 13 : 00-14 : 30	4 14 : 40-16 : 10	5 16 : 20-17 : 50
Mon			K500a Ms. Hayashi (A204)	W500 Mr. Sugawara (C402)	R500 Ichinose (A405)
			JC530 Ms. S. Sato (A307)	CJ500 Ms. S. Sato (C401)	
			PW500 Ms. Mushiake (C303)		
Tue	S500 Ms. Usui (C403)		A560 Ms. S.Sato (A307)	SW500 Mr. Tomono (C401)	RS030a Mr. Nakamura (C102)
	LV500 Mr. Soejima (A304)		HG500 Ms. Monma (C103)	JM500 Mr. Nakamura (C104)	JS500 Mr. Uehara (A307)
Wed		CP530 Ms. Mino Takahashi (A402)	N580 Mr. Seto (C305)	RS030b Ms. Hayashi (A405)	K500b Ms. Hayashi (A405) HS500 Mr. Aratake (A303)
Thu		L590 Mr. Yoshimoto (M304)	JH530 Ms. Hayashi (A303)	ML000 Ms. Mushiake (A105)	
Fri	C560 Mr. Sugawara (C408)		E000 Ms. Oshitani (M203)	MC500 Ms. Oshitani (A402)	

※ : Co-learning Seminar (p.8)

Level 6 (Advanced)

Course Title	JLP course code	Class	The course schedule	Notes
Advanced Japanese Listening Comprehension	L690		Tue 2	General Education : F-1,F-2 Course Code : CB22210, CB22220
Advanced Japanese Speaking/Conversation	S690		Thu 4	General Education : D-1,D-2 Course Code : CB44203, CB44204
Advanced Japanese Reading Comprehension	R690		Tue 3	General Education : J-1, J-2 Course Code : CB23213, CB23224
Advanced Japanese Writing/Composition	W690		Thu 3	General Education : H-1, H-2 Course Code : CB43203, CB43206
Advanced Business Japanese	BJ680	a	Wed 3	a, b will provide the same contents. (same below)
		b	Thu 6	
Advanced Japanese Culture Seminar: Pre-modern History and Thoughts in Japan	PH600		Thu 5	
Research Seminar	RS030	a	Tue 5	Only DEEP-BridgeU Students
		b	Wed 4	
e-learning	E000		Fri 3	

Advanced Co-learning Seminar Title	JLP course code	Class	The course schedule	Notes
Japanese Employment Practices and Their Changes	EP600		Mon 1	Course Code : CB11253
Global Communication	GC680	a	Tue 1	Course Code : CB21207
		b	Tue 3	Course Code : CB23247
Understanding of Human Resources Management Systems on Japanese companies and how to work	HR600		Wed 5	Course Code : CB35206
Intercultural Communication Studies: Basics	IC600		Mon 5	Course Code : CB15212
Buddhism and Japan	JB600		Mon 2	Course Code : CB12221
Intellectual History of Modern Japan	MH600		Thu 2	Course Code : CB42212
Critical thinking and logical writing	TW600		Tue 4	Course Code : CB24255
Japanese Literature in English and Japanese	ML000		Thu 4	Course Code : CB44213

Timetable

	1 8 : 50-10 : 20	2 10 : 30-12 : 00	3 13 : 00-14 : 30	4 14 : 40-16 : 10	5 16 : 20-17 : 50	6 18 : 00-19 : 30
Mon	EP600 Ms. Suematsu (A403)	JB600 Mr. Klautau (C102)			IC600 Ms. Yamamoto (A403)	
Tue	GC680a Ms. Yamamoto (A303)	L690 Ms. Sugaya (C303)	R690 Ms. Sugaya (C303)	TW600 Mr. Kushimoto (C303)	RS030a Mr. Nakamura (C102)	
			GC680b Ms. Yamamoto (A304)			
Wed			BJ680a Ms. Suzuki (C306)	RS030b Ms. Hayashi (A405)	HR600 Mr. Takeuchi (A306)	
Thu		MH600 Mr. Morikawa (A307)	W690 Mr. Yoshimoto (A305)	S690 Mr. Yoshimoto (A305)	PH600 Mr. Sonehara (B101)	BJ680b Ms. Suzuki (A301)
				ML000 Ms. Mushiaki (A105)		
Fri			E000 Ms. Oshitani (M203)			

※ : Co-learning Seminar (p.8)

8. Class Schedule by level

Level 1

	Oct.	Nov.	Dec.	Jan.	Feb.
C100 a	10/1			1/16	
C100 b	10/4			1/24	
C100 c	10/4			1/24	
C110 a	10/7			1/27	
C110 b	10/7			1/27	
C110 c	10/7			1/27	
C120	10/4			1/24	
C150	10/8	11/26			
I120	10/4			1/24	
B170	10/2			1/23	
M100		11/14		1/16	
R150	10/8	11/26			
A150	10/8	11/26			
H150	10/3 10/7				
K101a	10/2			1/15	
K101b	10/3			1/16	
K102	10/3			1/20	
K151	10/10			1/27	
E000	10/4			1/24	

Level 2

	Oct.	Nov.	Dec.	Jan.	Feb.
C210a	10/7			1/27	
C210b	10/7			1/20	
C220a	10/4			1/22	
C220b	10/4			1/22	
C250a	10/3	11/21			
C250b		11/28		1/24	
B270	10/2			1/22	
R250		11/29		1/31	
A250a	10/8	11/26			
A250b			12/3	1/21	
K201	10/1			1/14	
K250	10/3	11/21			
E000	10/4			1/24	
ML000	10/4			1/23	

Level 3

	Oct.	Nov.	Dec.	Jan.	Feb.
C320	10/4			1/29	
L/S310	10/7			1/20	
R/W310	10/10			1/23	
G/R350		11/22		1/14	
G/W350		11/22		1/14	
L300	10/2			1/15	
L350		11/25		1/16	
S300	10/1			1/14	
S350		11/25		1/16	
R300	10/1				1/4
W300	10/3			1/16	
A350			12/3	1/21	
K300	10/1			1/14	
K350		11/22		1/20	
E000	10/4			1/24	
ML000	10/4			1/23	

Level 4

	Oct.	Nov.	Dec.	Jan.	Feb.
C440	10/4			1/29	
L/S410	10/7			1/20	
R/W410	10/10			1/23	
L400	10/2			1/15	
S400	10/7			1/20	
R400	10/1			1/14	
W400	10/1			1/21	
K400	10/4			1/20	
N480	10/3			1/23	
IU430	10/3			1/23	
PB480	10/7 -- 10/21 -- 10/28	-----11/30	-----12/7 ----12/16		
SC430	10/4			1/31	
RS030a	10/1			1/21	
RS030b	10/2			1/22	
E000	10/4			1/24	
ML000	10/4			1/23	

Level 5

	Oct.	Nov.	Dec.	Jan.	Feb.
C560	10/4			1/24	
L590	10/3			1/30	
S500	10/1			1/14	
R500	10/7			1/20	
W500	10/7			1/20	
A560	10/8			1/21	
K500a	10/7			1/20	
K500b	10/2			1/15	
N580	10/2			1/22	
CJ500	10/7			1/20	
SW500		11/26		11/28	
HS500		11/27		11/29	
CP530	10/2			1/22	
HG500	10/1			1/21	
JC530	10/7			1/27	
JM500	10/1			1/21	
JS500	10/1			1/21	
LV500	10/1			1/28	
MC500	10/4			1/31	
JH530	10/3			1/23	
PW500	10/7	-----	-----	1/27	ワークショップ 1/25-26
RS030a	10/1			1/21	
RS030b	10/2			1/22	
E000	10/4			1/24	
ML000	10/4			1/23	

Level 6

	Oct.	Nov.	Dec.	Jan.	Feb.
L690	10/1			1/28	
S690	10/3			1/30	
R690	10/1			1/28	
W690	10/3			1/30	
BJ680a	10/2			1/22	
BJ680b	10/3			1/23	
PH600	10/3			1/16	
JB600	10/7			1/27	
EP600	10/7			1/27	
GC680a	10/1			1/21	
GC680b	10/1			1/21	
HR600	10/2			1/22	
IC600	10/7			1/27	
MH600	10/3			1/23	
TW600	10/1			1/21	
RS030a	10/1			1/21	
RS030b	10/2			1/22	
E000	10/4			1/24	
ML000	10/4			1/23	

9. e-learning Program

e-learning is a form of study using the Internet. It enables you to study Japanese using Japanese language-learning programs and tools on the Web.

1. URLs for Japanese e-learning programs can be found below.

<http://nihongo-e-na.com/eng/>

<http://nihongo-e-na.com/jpn/>

2. ALC NetAcademy Japanese Course 2

This is an e-learning program used at Tohoku University. Using this program requires a Tohoku University student number and password. If you don't have an ID and password, please inquire at your department's Academic Affairs Section or General Affairs Section. It will take about one week to obtain them.

Levels	Basic through Intermediate
Course Type	Characters (1 unit), Reading (30 units), Listening (30 units), Vocabulary (300 units), Mini-Test (12 units)
Instructions	On campus: log in to https://netacademy.cite.tohoku.ac.jp/onet2/ (use your student ID number and password) Off campus: requires SRP authentication (attend the guidance session if you don't know how to do this)

3. e-learning Program Guidance

Guidance sessions for the e-learning program will be held as follows. At these sessions, we will explain how to use various programs, with an emphasis on ALC NetAcademy.

October 4 (Fri.): 13:00-14:30 M203 (Multimedia Education and Research Complex)

October 11 (Fri.): 13:00-14:30 M203 (Multimedia Education and Research Complex)

10. Contact Information

Inquiries about Japanese Classes

If you don't know which classes to register, or have problems with your classes, please ask your program coordinator. Please send an inquiry by email first. If you need to meet in person, please make an appointment by email.

Program Name	Coordinator (upper row : main coordinator in charge)	Department/Email Address
JYPE COLABS	Professor Satoshi UEHARA	Kawauchi Kita Campus, Kawakita Joint Building 520 Email: uehara * he.tohoku.ac.jp
	Associate Professor Kensaku SOEJIMA	Kawauchi Kita Campus, Kawakita Joint Building 517 Email: kensaku * tohoku.ac.jp
IPLA	Senior Assistant Professor Masako HAYASHI	Kawauchi Kita Campus, Kawakita Joint Building 519 Email: masako * tohoku.ac.jp
	Associate Professor Wataru NAKAMURA	Kawauchi Kita Campus, Kawakita Joint Building 523 Email: wataru.nakamura.a8 * tohoku.ac.jp
DEEP-Bridge	Senior Assistant Professor Masako HAYASHI	Kawauchi Kita Campus, Kawakita Joint Building 519 Email: masako * tohoku.ac.jp
	Associate Professor Wataru NAKAMURA	Kawauchi Kita Campus, Kawakita Joint Building 523 Email: wataru.nakamura.a8 * tohoku.ac.jp
Intensive Japanese Language Course	Associate Professor Wataru NAKAMURA	Kawauchi Kita Campus, Kawakita Joint Building 523 Email: wataru.nakamura.a8 * tohoku.ac.jp
	Senior Assistant Professor Masako HAYASHI	Kawauchi Kita Campus, Kawakita Joint Building 519 Email: masako * tohoku.ac.jp
Japan-Korea Program	Professor Sekiko SATO	Kawauchi Kita Campus, Kawakita Joint Building 518 Email: sekiko.sato.e8*tohoku.ac.jp
	Associate Professor Kensaku SOEJIMA	Kawauchi Kita Campus, Kawakita Joint Building 517 Email: kensaku * tohoku.ac.jp
Miscellaneous	Associate Professor Kensaku SOEJIMA	Kawauchi Kita Campus, Kawakita Joint Building 517 Email: kensaku * tohoku.ac.jp
	Professor Satoshi UEHARA	Kawauchi Kita Campus, Kawakita Joint Building 520 Email: uehara * he.tohoku.ac.jp

※ The location of the Kawakita Joint Building is shown on A07 in the Kawauchi Campus Map.

※ Replace * with @ in email addresses.

Inquiries about Official Procedures

(Class Registration, Issuance of Academic Reports (Seiseki Shoumeisho) etc.)

Student Exchange Division, International Education Section
Kawauchi Kita Campus Education and Student Support Center, 2F (see A01 in the Kawauchi Campus
Map)

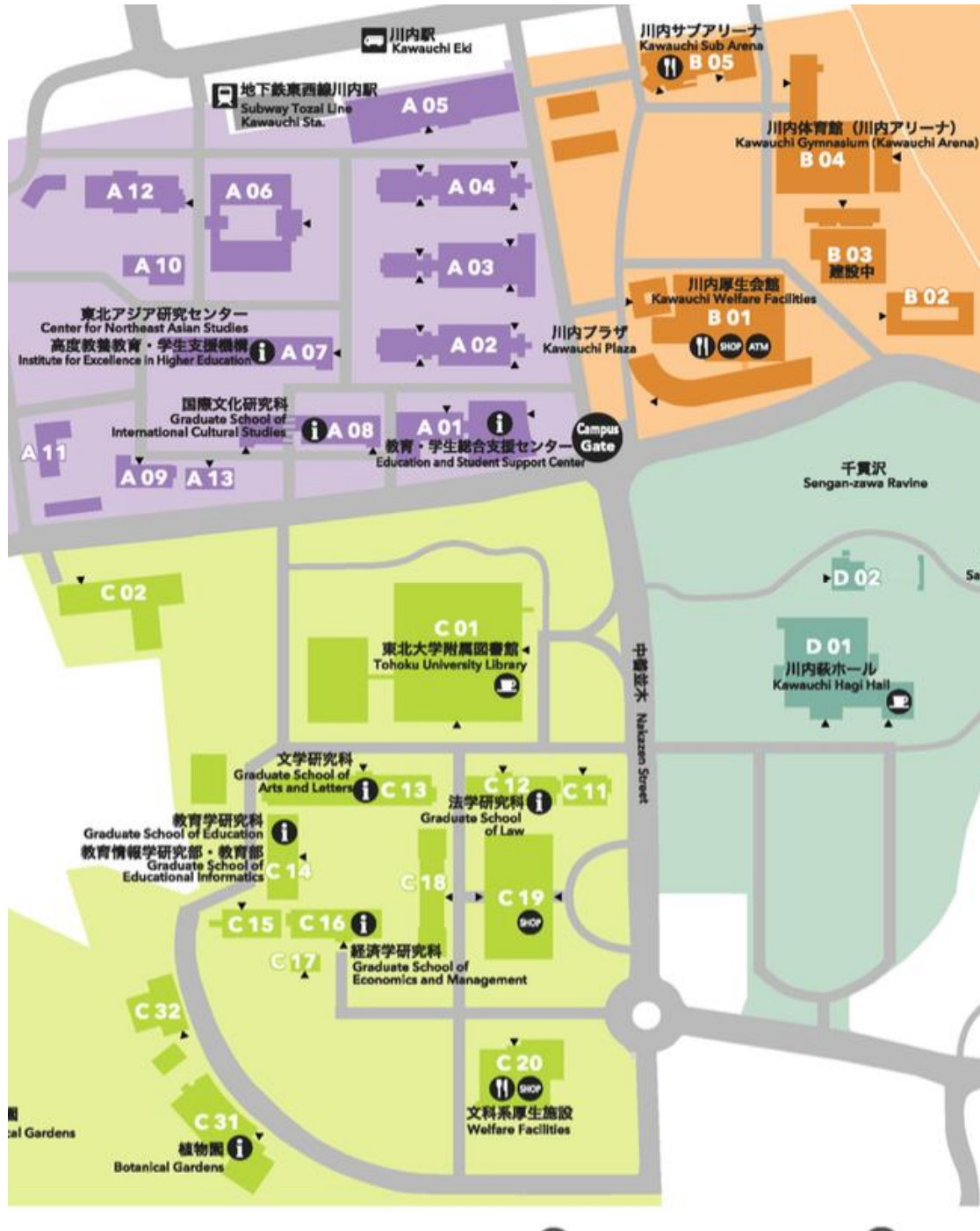
Phone: 022-795-7817

Email: sed2*grp.tohoku.ac.jp

Replace * with @ in email addresses.

Note: We do not issue hours certificates.

11. Kawauchi Campus Map



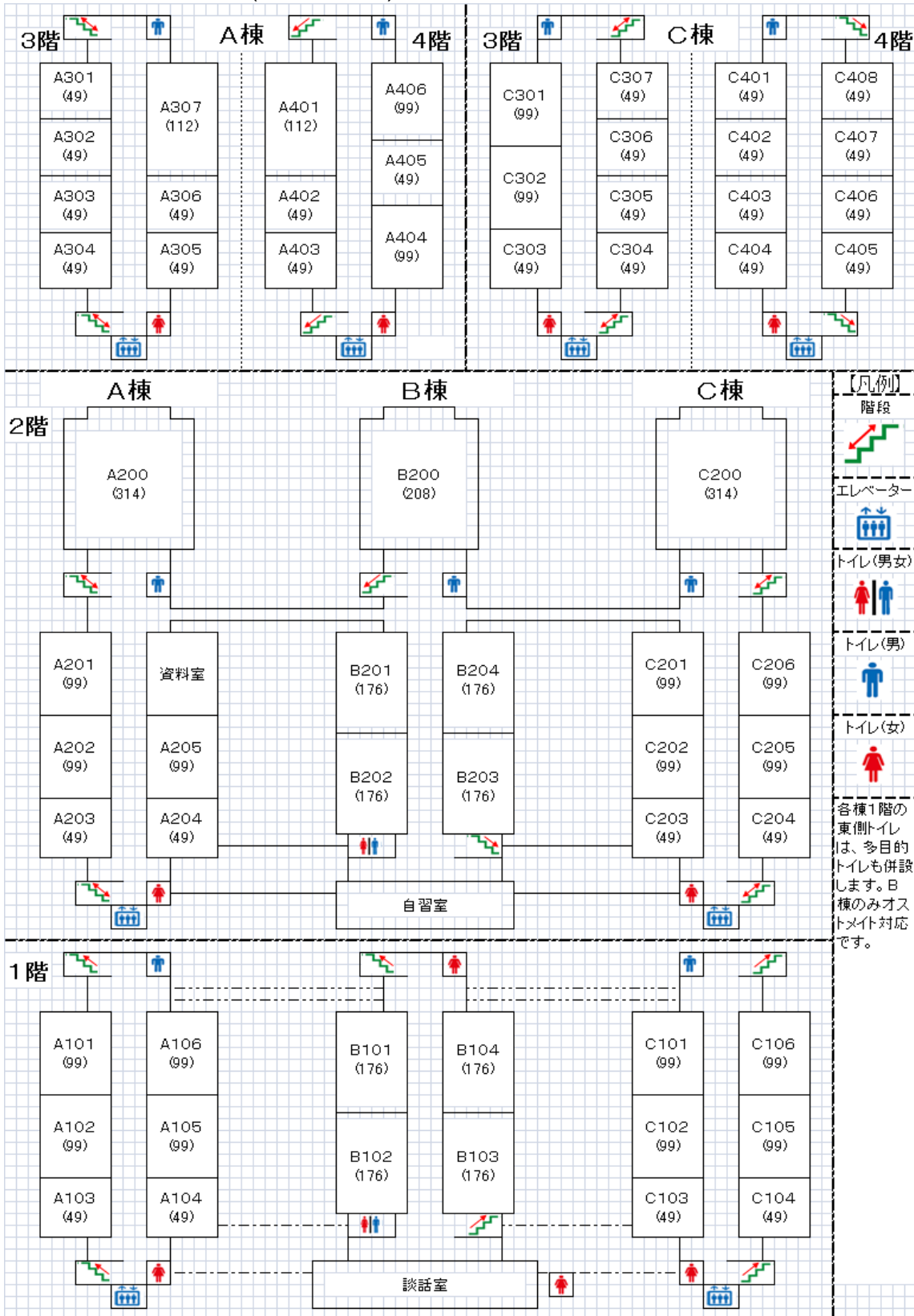
- A 01** 教育・学生総合支援センター
Education and Student Support Center
- A 02** 講義棟A棟
Lecture Rooms A
- A 03** 講義棟B棟
Lecture Rooms B
- A 04** 講義棟C棟
Lecture Rooms C
- A 05** マルチメディア教育研究棟 (教育情報基盤センター)
Multimedia Education and Research Complex (Center for Information Technology in Education)
- A 06** 学生実験棟
Student Laboratories
- A 07** 川北合同研究棟
Kawauchi Research Forum
(高度教養教育・学生支援機構/東北アジア研究センター)
(Institute for Excellence in Higher Education / Center for Northeast Asian Studies)
- A 08** 国際文化研究棟
Graduate School of International Cultural Studies
- A 09** 保健管理センター
Student Health Care Center
- A 10** 教育研究基盤支援棟 4
Education and Research Base Support Building 4
- A 11** 教育研究基盤支援棟 5
Education and Research Base Support Building 5
- A 12** 国際交流棟
International Exchange Building
- A 13** 学生相談所
University Counseling Center

- B 01** 川内厚生会館
Kawauchi Welfare Facilities
- B 02** 川内サークル部室棟
Kawauchi Circle and Club Building
- B 03** 川内課外活動共用施設 (川内ホール)
Kawauchi Extracurricular Activity Shared Facilities (Kawauchi Hall)
- B 04** 川内体育館 (川内アリーナ)
Kawauchi Gymnasium (Kawauchi Arena)
- B 05** 川内サブアリーナ
Kawauchi Sub Arena

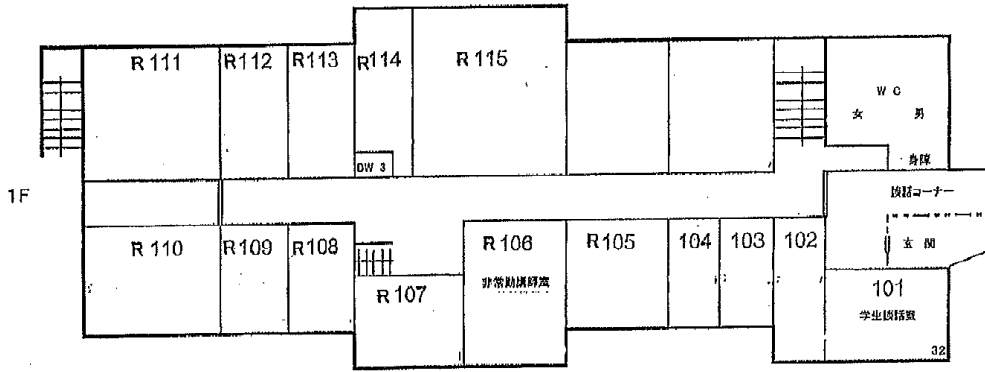
- C 01** 東北大学附属図書館
Tohoku University Library
- C 02** 入試センター
Admission Center
- C 11** 文・法合同研究棟
Arts and Letters / Law Joint Building
- C 12** 法学研究科棟
Graduate School of Law
- C 13** 文学研究科棟
Graduate School of Arts and Letters
- C 14** 文科系総合研究棟 (教育学研究科)
New Humanities Building (Graduate School of Education)
- C 15** 文科系合同研究棟
Graduate School of Economics and Management
- C 16** 経済学研究科棟
Graduate School of Economics and Management
- C 17** 経済学研究科演習室
Seminar Rooms
- C 18** 中講義棟
Lecture Rooms
- C 19** 文科系総合講義棟
Lecture Rooms
- C 20** 文科系厚生施設 (メイプルパーク川内)
Welfare Facilities (Maple Park Kawauchi)

12. Classroom Locations

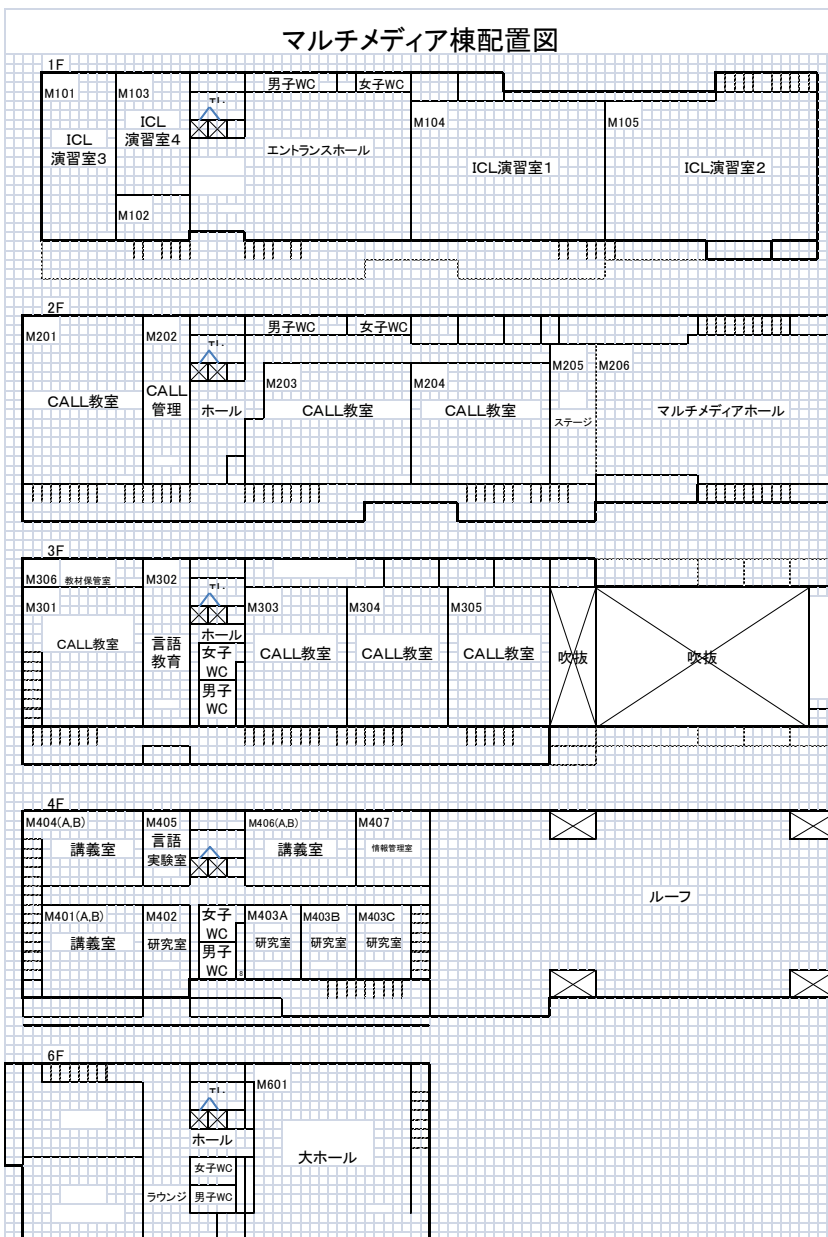
A, B, and C Classrooms (A02, A03, A04)



International Exchange Building (A12)



Multimedia Education and Research Complex (A05)



Student

→

Class Instructor

Class Registration Card (Submit to Class Instructor)

Name	hEnglishAlphabetFamilyname Familyname	Middlename	hKanjiFamilyname Familyname	J19B□□□□		
Enrollment Status	<input type="checkbox"/> Undergraduate <input type="checkbox"/> Graduate (<input type="checkbox"/> MA <input type="checkbox"/> Doctoral) <input type="checkbox"/> Undergrad. Research Student <input type="checkbox"/> Grad. Research Student <input type="checkbox"/> Research Institute Research Student <input type="checkbox"/> Exchange Student (<input type="checkbox"/> JYPE/ <input type="checkbox"/> COLABS/ <input type="checkbox"/> IPLA/ <input type="checkbox"/> DEEP <input type="checkbox"/> DEEp-BridgeU <input type="checkbox"/> DEEp-BridgeG/ <input type="checkbox"/> Other _____) <input type="checkbox"/> Other _____			Japanese Level (Kanji Level)		
				Department		
				Academic Advisor's Name		
Subject		Day	M T W Th F	Period	1 2 3 4 5 6	

Class Registration Card (Submit to Class Instructor)

Name	hEnglishAlphabetFamilyname Familyname	Middlename	hKanjiFamilyname Familyname	J19B□□□□		
Enrollment Status	<input type="checkbox"/> Undergraduate <input type="checkbox"/> Graduate (<input type="checkbox"/> MA <input type="checkbox"/> Doctoral) <input type="checkbox"/> Undergrad. Research Student <input type="checkbox"/> Grad. Research Student <input type="checkbox"/> Research Institute Research Student <input type="checkbox"/> Exchange Student (<input type="checkbox"/> JYPE/ <input type="checkbox"/> COLABS/ <input type="checkbox"/> IPLA/ <input type="checkbox"/> DEEP <input type="checkbox"/> DEEp-BridgeU <input type="checkbox"/> DEEp-BridgeG/ <input type="checkbox"/> Other _____) <input type="checkbox"/> Other _____			Japanese Level (Kanji Level)		
				Department		
				Academic Advisor's Name		
Subject		Day	M T W Th F	Period	1 2 3 4 5 6	

Class Registration Card (Submit to Class Instructor)

Name	hEnglishAlphabetFamilyname Familyname	Middlename	hKanjiFamilyname Familyname	J19B□□□□		
Enrollment Status	<input type="checkbox"/> Undergraduate <input type="checkbox"/> Graduate (<input type="checkbox"/> MA <input type="checkbox"/> Doctoral) <input type="checkbox"/> Undergrad. Research Student <input type="checkbox"/> Grad. Research Student <input type="checkbox"/> Research Institute Research Student <input type="checkbox"/> Exchange Student (<input type="checkbox"/> JYPE/ <input type="checkbox"/> COLABS/ <input type="checkbox"/> IPLA/ <input type="checkbox"/> DEEP <input type="checkbox"/> DEEp-BridgeU <input type="checkbox"/> DEEp-BridgeG/ <input type="checkbox"/> Other _____) <input type="checkbox"/> Other _____			Japanese Level (Kanji Level)		
				Department		
				Academic Advisor's Name		
Subject		Day	M T W Th F	Period	1 2 3 4 5 6	

Class Registration Card (Submit to Class Instructor)

Name	hEnglishAlphabetFamilyname Familyname	Middlename	hKanjiFamilyname Familyname	J19B□□□□		
Enrollment Status	<input type="checkbox"/> Undergraduate <input type="checkbox"/> Graduate (<input type="checkbox"/> MA <input type="checkbox"/> Doctoral) <input type="checkbox"/> Undergrad. Research Student <input type="checkbox"/> Grad. Research Student <input type="checkbox"/> Research Institute Research Student <input type="checkbox"/> Exchange Student (<input type="checkbox"/> JYPE/ <input type="checkbox"/> COLABS/ <input type="checkbox"/> IPLA/ <input type="checkbox"/> DEEP <input type="checkbox"/> DEEp-BridgeU <input type="checkbox"/> DEEp-BridgeG/ <input type="checkbox"/> Other _____) <input type="checkbox"/> Other _____			Japanese Level (Kanji Level)		
				Department		
				Academic Advisor's Name		
Subject		Day	M T W Th F	Period	1 2 3 4 5 6	