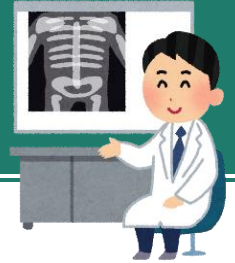


Academic Year 2019

# Fall Chest X-rays

For students enrolling in October 2019



## Date/Time

○ October 21 (Mon) 11:30 ~ 12:30 (Be punctual!)

※ Undergraduate Students

※ Graduate students/non-degree students (Science, Pharmaceutical Sciences, Engineering, Information Sciences, Environmental Studies, all research institutes)

○ October 23 (Wed) 11:30 ~ 12:30 (Be punctual!)

※ Graduate students/non-degree students (Arts and Letters, Education, Law, Economics and Management, Medicine, Dentistry, Agricultural Science, Life Sciences, International Cultural Studies, Educational Informatics, Biomedical Engineering)

If you are unable to come on the day designated for your department, you may come on the other day.

## Place

Student Health Care Center (Kawauchi Kita Campus)A09

※ There are no parking spaces, so please come by public transportation etc.



Student Health Care Center(A09)

## Eligibility

### Students enrolling in October 2019

(It includes non-degree students who enrolled in May 2019 or later and will be enrolled for one month or longer.)

※ The above excludes students who underwent the Student Medical Examinations held in May 2019 (example: transfer students).

※ Excludes students who underwent Student Medical Examinations in May 2019.

## Bring

Student ID card, or document (such as enrollment notice) that shows your name and student ID number.

**Note: If you do not bring the above, you will not be able to undergo the examination!**

### 《Instructions》\*Please refer to the attached.

Please wear a plain t-shirt for the x-ray.

(Do not wear printed or embroidered shirts, or clothes with joined bottoms and tops, such as one-piece dresses etc.)

Do not wear shirts with metal parts or buttons. Do not wear necklaces etc.

If you have long hair, please tie it back with an elastic band etc.

### 《X-ray Results and Medical Exam Certificates》

※ If you require additional tests, you will be contacted by phone by around November 15.

※ If you require a medical examination certificate, additional tests will be necessary (internal exam, blood pressure, height/weight, eyesight). Please call the Student Health Care Center (022-795-7829) to make an appointment. Issuing medical examination certificates requires some preparation time. Please inquire on or after November 28th.

### 《Working Students》

If you underwent a medical exam that included a chest x-ray at your place of employment (or are scheduled to do so), you do not need to undergo the fall chest x-ray if you bring a photocopy of your results to the Student Health Care Center. However, in this case the center will be unable to issue a Medical Examination Certificate.

### 《Student Medical Examinations from Next Year》

Please undergo the Student Medical Examination in May from next year on.

In the event of an emergency (natural disaster etc.), please see the Student Health Care Center website:

<http://www.health.ihe.tohoku.ac.jp/>

Inquiries: Student Health Care Center, Examination Office Tel 022-795-7829

