

A Guide to the Tohoku University Japanese Language Program at Kawauchi (Updated April 11, 2019)

First Term, AY 2019
Tohoku University Institute for Excellence in Higher Education

The Institute for Excellence in Higher Education offers the Japanese Language Program for International Students to improve the Japanese language proficiency of foreign students and researchers at Tohoku University, and other universities in Sendai. We hope that it will facilitate your everyday activities and research. There are a variety of classes, from beginner to advanced levels, so you can study at the Japanese level appropriate for you.

Table of Contents

1. Application/Class Registration
 2. Notes on Attending Class
 3. Orientation and Registration Guidance
 4. Level and Subject Codes
 5. Grading and Progression System
 6. Eligibility for Classes
 7. Subjects and Timetable by Level
 8. Class Schedule by level
 9. E-learning Program
 10. Contact Information
 11. Kawauchi Campus Map
 12. Classroom Locations
- Appendix: Class Registration Cards

Application/Class Registration Schedule

BE SURE TO REGISTER DURING THE REGISTRATION PERIOD!

Application Period: March 14 (Thu.) - April 18 (Thu.)

Registration Period: April 16 (Tue.) - 25 (Thu.)

Application Period for Half-Term Classes (Second Part of Term): May 22 (Wed.) - 30 (Thu.)

Registration Period for Half-Term Classes (Second Part of Term): June 4 (Tue.) - 11 (Tue.)

1. Application/Class Registration

Do you have a Tohoku University ID?	→YES	Are you an undergraduate JYPE, COLABS, IPLA, or DEEP-Bridge U student continuing from the fall 2018 term?	→YES	You do not need to complete Step1: Application. You will be issued a Japanese Language Program number and certificate by email. Proceed to Step 2: Class Registration.				
			→NO	Were you notified of your Japanese level for the new term?	→YES	Will you take classes at that level?	→YES	→A
					→NO		→B	
					NO			
	→NO	Will you enter Tohoku University in the new term?			→YES	Do you belong to JYPE, COLABS, IPLA, DEEP-Bridge Undergraduate, the Intensive Japanese Language Course, or the Japan-Korea Cooperative Program?	→YES	→C
							→NO	→D
→NO (Commuting from a local university)					→E			

※You must submit an application even if you applied during the previous term.

Step 1: Application

A (enrolled at TU, have an assigned Japanese level, will not take the PT):

(1) Log in to the academic affairs system from the on-campus network to apply for classes.

URL: <https://jlpk.bureau.tohoku.ac.jp/entry/>

*Please be sure to register your Japanese Language Program number from the previous term and password with the system.

*Applications are accepted from March 14 to April 18.

*Applications for classes taught in the latter half of the term are accepted from May 22 to May 30.

(2) You will receive a Japanese Language Program number and Excel file by email. The Excel file is for those who are taking the placement test, so you need not submit it.

(3) Later, you will be sent a certificate showing your Japanese level for the new term.

(4) After the term starts, please perform Step 2.

B-1 (enrolled at TU, beginner, will not take the PT):

(1) Log in to the academic affairs system from the on-campus network to apply for classes.

URL: <https://jlpk.bureau.tohoku.ac.jp/entry/>

*Please be sure to choose "beginner" at the question 12 on the system.

*Applications are accepted from March 14 to April 18.

*Applications for classes taught in the latter half of the term are accepted from May 22 to May 30.

(2) You will receive a Japanese Language Program number and Excel file by email. The Excel file is for those who are taking the placement test, so you need not submit it.

(3) Later, you will receive a Level 1 (beginner) certificate.

(4) After the term starts, please perform Step 2.

B-2 (enrolled at TU, studied Japanese before, will take the PT):

(1) Log in to the academic affairs system from the on-campus network to apply for classes.

URL: <https://jlpk.bureau.tohoku.ac.jp/entry/>

* If you have a Japanese Language Program number and password from the previous term, please be sure to register them with the system.

*Applications are accepted from March 14 to April 18.

*Applications for classes taught in the latter half of the term are accepted from May 22 to May 30.

(2) You will receive a Japanese Language Program number and Excel file by email. You will also be provided a link to information on the placement test.

(3) Take the online placement test.

(4) Enter your test results in the Excel file and send it to the provided email address.

(5) You will be sent a certificate showing your Japanese level. If you were notified of a level for the new term, but also have a level determined by your test result, your level will be whichever is higher.

(6) After the term starts, please perform Step 2.

C-1 (not yet enrolled at TU, beginner, participating in the above programs, will not take the PT):

(1) You will receive a Japanese Language Program number and Excel file by email. The Excel file is for those who are taking the placement test, so you need not submit it.

(2) Later, you will receive a Level 1 (beginner) certificate.

(3) After entering TU, please perform Step 2.

C-2 (not yet enrolled at TU, studied Japanese before, participating in the above programs, will take the PT):

(1) You will receive a Japanese Language Program number and Excel file by email. You will also be provided a link to information on the placement test.

(2) Take the online placement test.

(3) Enter your test results on the Excel file and send it to the provided email address.

(4) You will be sent a certificate showing your Japanese level.

(5) After entering TU, please perform Step 2.

D-1 (not yet enrolled at TU, beginner, general, will not take the PT):

(1) After entering TU, log in to the academic affairs system from the on-campus network to apply for classes.

URL: <https://jlpk.bureau.tohoku.ac.jp/entry/>

*Please be sure to choose "beginner" at the question 12 on the system.

*Applications are accepted from March 14 to April 18.

*Applications for classes taught in the latter half of the term are accepted from May 22 to May 30.

(2) You will receive a Japanese Language Program number and Excel file by email. The Excel file is for those who are taking the placement test, so you need not submit it.

(3) Later, you will receive a Level 1 (beginner) certificate.

(4) Please perform Step 2.

D-2 (not yet enrolled at TU, studied Japanese before, general, will take the PT):

(1) After entering TU, log in to the academic affairs system from the on-campus network to apply for classes.

URL: <https://jlpk.bureau.tohoku.ac.jp/entry/>

*Applications are accepted from March 14 to April 18.

*Applications for classes taught in the latter half of the term are accepted from May 22 to May 30.

(2) You will receive a Japanese Language Program number and Excel file by email. You will also be provided a link to information on the placement test.

(3) Take the online placement test.

(4) Enter your test results in the Excel file and send it to the provided email address.

(5) You will be sent a certificate showing your Japanese level.

(6) Please perform Step 2.

E (not affiliated with TU, will take the PT):

(1) Send an email to the below address, informing us of your desire to take classes in the Japanese Language Program.

Address: jlpk@g-mail.tohoku-university.jp

*Applications are accepted from March 14 to April 18.

*Applications for classes taught in the latter half of the term are accepted from May 22 to May 30.

- (2) You will receive a survey by email.
- (3) Enter your answers on the survey form, and return it by email.
- (4) You will receive a Japanese Language Program number and Excel file by email. You will also be provided a link to information on the placement test.
- (5) Take the online placement test.
- (6) Enter your test results on the Excel file and send it to the provided email address.
- (7) If you are rated Level 2 (basic) or higher, you will be issued a Japanese Language Program number and certificate by email.
- (8) Please perform Step 2.

Step 2: Class Registration

- (1) Fill out the required items on the Class Registration Cards attached at the end of this guide.
- (2) Take your certificate and Class Registration Cards to classes suitable for your level; if you wish to register after attending the first class, ask for the instructor's permission.
 - *Class sizes are limited. Students will be accepted on a first-come basis.
 - *Some classes preferentially accept students from certain programs.
- (3) After receiving permission to take the class, give the Class Registration Card to the instructor.
 - *If the class is taught by multiple instructors, give the Class Registration Card to just one of them.
- (4) Log in to the academic affairs system and register your classes using the class registration screen.
 - URL: <https://ilpk.bureau.tohoku.ac.jp/student/login.php>
 - ※ You will only be able to register only classes for which you have received permission from the instructors.
 - ※ IPLA, and DEEP-Bridge U students will be informed about registration in a separate email. Do NOT register with the above system.
 - ※ Class registrations are accepted from April 16 to April 25.
 - ※ Registrations for classes taught in the latter half of the term are accepted from June 4 to June 11.

2. Notes on Attending Class

1. Be sure to register for classes. If you do not, you will not be able to take classes offered by this program.
2. You cannot register for classes after the deadline (April 25).
 - ※ The deadline to register for classes taught in the latter half of the term is June 11.
3. Students enrolled at universities in and around Sendai are eligible to take classes. Relatives etc. of international students are not eligible to attend classes.
 - ※ Those enrolled in universities other than Tohoku University are eligible to take classes if they are Level 2 or higher.
4. Read the syllabus before registering for classes to learn about class goals, content, and how performance is evaluated. If you have questions about registration or class content, please come to Registration Guidance (p.4).

Syllabus: <http://www.he.tohoku.ac.jp/SJLE/syllabi/>

(after March 20)

5. Please purchase your textbooks at the bookstore in the Kawauchi Campus Welfare Facilities (see B01 in the Kawauchi Campus Map). Using copied textbooks (paper photocopies, or digital copies downloaded from the Internet) in class is forbidden. Students using such copies will not be permitted to attend class. Making illegal copies of copyrighted materials is forbidden under Japanese law.

6. Class sizes are limited. Students will be accepted on a first-come basis, so you may not be able to take all your first-choice classes.

Intensive Learning Classes up to Pre-intermediate (excluding H150 and K151), RS430, RS530, RS630	Limit: 10
C100, C110, I120, H150, C200, C210, C220, I220, N480, CC430, MM400, PE430, SC430, RP480, L590, N580, AW530, CD500, DU500, HF530, HG500, JF530, JL500, ML500, PW500, HS500, PA500, WT500, L690, S690, R690, W690, BJ680, EC600, GC680, HR600, JB600, MH600, PL600, SE600	Limit: 15
K151, K101, C320, S300, C440, S400, S500	Limit: 20
Other	Limit: 25

7. If you must be absent from class, inform the instructor directly or via a classmate. If you do not attend at least two-thirds of the total number of classes, you will receive a "D" (fail).
8. Important notices are posted on the bulletin boards on the south side of Lecture Room building A (see A02 in the Kawauchi Campus Map). Please check these periodically.
9. Failure to follow the above rules may result in losing eligibility to attend classes in this program.

3. Orientation and Registration Guidance

Orientation and Registration Guidance will be held as per the below schedule. Please attend one of the following sessions if you can.

	1st IPLA students & others	2nd only JYPE/COLABS students	3rd
Date/ Time	April 5 (Fri) 10:30~11:30	April 8 (Mon) 10:30~11:30	April 11 (Thu) 12:15~13:00
Place	B101	C105	B104

	4th	5th only DEEp-BridgeU students
Date/ Time	April 15 (Mon) 12:15~13:00	April 17 (Wed) 12:10~12:50
Place	B103	C103

- ※ Orientation and Registration Guidance will be held separately for the Intensive Japanese Language Course students.

4. Level and Subject Codes

1. Japanese levels are numbered 1 through 6. Attainment goals are shown in the below table.

	Attainment Goals		
		CEFR/JFS	JLPT
Level 1 (Beginner)	Students will acquire conversation, reading, and writing abilities necessary for daily life.	A1	N5
Level 2 (Basic)	Students will acquire speaking, listening, reading, and writing abilities for a variety of everyday situations.	A2.1	N4
Level 3 (Pre-intermediate)	Students will acquire basic Japanese skills needed for student life and attending university classes in Japan.	A2.2	N3
Level 4 (Intermediate)	Students will acquire skills needed to read articles and essays on familiar topics of interest and write simple reports. They will also learn to listen to lectures and express their own opinions in Japanese.	B1	N2
Level 5 (Upper-Intermediate)	Students will acquire Japanese skills needed to read academic texts, write reports, listen to lectures, and make presentations.	B2	N1
Level 6 (Advanced)	Students will acquire Japanese skills needed to understand specialized academic texts, write reports, listen to lectures related to their majors, and give seminar presentations.	C1	
Level 7Level (Superior)	Students will acquire Japanese skills needed to critically read specialized academic texts, write research plans and research papers, participate in discussions at seminars, and make academic presentations.		

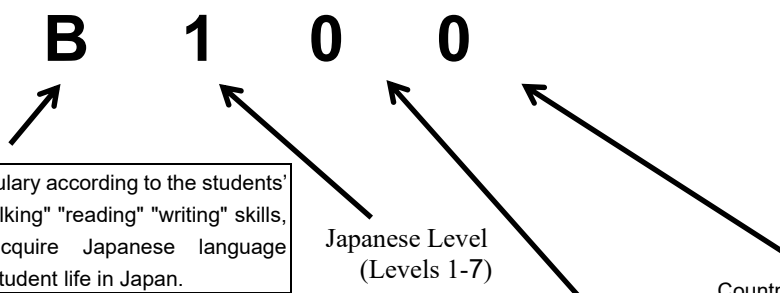
CEFR: Common European Framework of Reference for Languages

JFS: JF Standard for Japanese-Language Education

JLPT: Japanese Language Proficiency Test

※Level 7 classes are open only to DEEp-BridgeU (DEEp-Bridge undergraduate students) who completed Level 6 in the second term of the previous academic year.

2. Please see below for an explanation of Subject Codes.



Abbreviated Class Subject

C(Comprehensive Japanese)	Learn grammar and vocabulary according to the students' level, extend "listening" "talking" "reading" "writing" skills, and comprehensively acquire Japanese language proficiency necessary for student life in Japan.
B (Basic Japanese for Business Communication)	Learn elementary conversational skills needed for various aspects of everyday life in Japan, and simple expressions used in business.
I (Beginning/Basic Japanese for Interaction)	Learn basic grammar, acquire listening, speaking, reading, and writing skills. Emphasis will be placed on acquiring communication skills.
G (Grammar)	Study grammar, build fundamental Japanese skills.
L (Listening Comprehension)	Acquire listening skills necessary for student life, such as listening to lectures, understanding explanations, and so on.
S (Speaking/Conversation)	Acquire speaking skills necessary to student life, learn to make oral presentations.
R (Reading Comprehension)	Acquire fundamental reading comprehension skills necessary to read specialized/academic texts.
W (Writing/Composition)	Acquire fundamental writing skills necessary to write research plans, research papers, etc.
A(Applicative Practice)	Acquire the ability to apply the Japanese language.
H (Hiragana/Katakana)	Learn hiragana and katakana syllabaries.
K (Kanji/Vocabulary)	Learn kanji and its related vocabulary.

Japanese Level
(Levels 1-7)

Priority/Exclusive Program

0	No Priority/ Non-exclusive
1	JYPE/COLABS
2	IPLA
3	DEEp-BridgeU (DEEp-Bridge undergraduate students)
4	IPLA/DEEp-BridgeU
5	Intensive Japanese Language Program
6	Japan-Korea Cooperative Program
7	GPEM
8	DATEntre (Employment Support Program)
9	General Education

Countries that use/do not use Chinese characters

0	No restrictions
1	For students from countries that do not use Chinese characters
2	For students from countries that use Chinese characters

5. Grading and Progression System

1. The grading scale for this program is as follows.

AA	Particularly excellent (90-100 points).
A	Excellent (80-89 points).
B	Good (70-79 points).
C	Passed (60-69 points).
D	Failed (0-59 points).
E	Withdrew from the class.

- ※ You will be notified of your grades at the end of each term. Upon request, your academic advisor can be notified of your grades too.
- ※ If you wish to withdraw from a class, contact the class's instructor. JYPE, COLABS, IPLA, and DEEP-BridgeU (DEEP-Bridge undergraduate) students should contact the Student Exchange Division. If you stop attending class without withdrawing, you will receive a "D."
- ※ Deadlines for dropping classes are as follows.
Term-long Classes: May 31
Half-term Classes (first part of the term): May 10
Half-term Classes (second part of the term): June 28
- ※ You will also receive a "D" if you do not attend at least two-thirds of the total number of classes.
- ※ If you require an Academic Report (Rishuu Shoumeisho), please ask for it at the International Education Section of the Student Exchange Division (p.18).
- ※ In general, only JYPE, COLABS, IPLA, and DEEP-BridgeU students receive credit for classes registered in the Japanese Language Program; other students will not receive credit. However, some departments may approve credits for these classes. For details, inquire with the relevant staff at your department.

2. This program's progression system is as follows.

JYPE(Level 1-2), COLABS(Level 1-2), IPLA(Level 1-2), and DEEP-BridgeU Students

If you obtain a C or better, and your credits are approved, you may proceed to the next difficulty level the following term.

Other students

If you fulfill the conditions indicated on the table below, you may proceed to the next difficulty level the following term without taking a placement test.

Current Term	Conditions	Following Term
Level 1	Obtain an "AA" or "A" grade in both C1 and K1.	→Level 2
Level 2	Obtain an "AA" or "A" grade in both C2 and K2.	→Level 3
Level 3	1. Obtain an "AA" or "A" grade in C3 or C4. 2. Obtain 2 "AA" or "A" grades in both L/S or R/W and another Level 3 or 4 course.	→Level 4
Level 4	or 3. Obtain more than 3 "AA" or "A" grades in Level 3 or 4 courses other than C3, C4, L/S or R/W.	→Level 5
Level 5	1. Obtain 2 "AA" or "A" grades in both C5 and another level 5 course, or 2. Obtain more than 3 "AA" or "A" grades in level 5 courses other than C5.	→Level 6

*Obtaining 2 "B" grades is considered equal to obtaining an "A"

6. Eligibility for Classes

Classes that can be taken at each level are as follows.

- ※ If your level is marked "Tentative," you may register for classes both at your tentative level, and one level below. (E.g. if you are "Level 4 (Tentative)," you may register for both Level 4 and Level 3 classes at the same time.)
- ※ If you are a JYPE, COLABS, IPLA, or DEEP-BridgeU student you must register for classes either in your tentative level, or one level below. You cannot register for classes both at your tentative level and one level below at the same time. (E.g. if you are "Level 4 (Tentative)," you must choose whether to register for Level 3 classes or Level 4 classes.)

2.	Levels		Comprehens ive	Grammar	Speaking	Listening	Reading	Writing	Application/ Practical	Kana	Miscellaneous
1	2 (Tentative)		C100 C110 C120 C150* I120				R150*		A150*	H150a* H150b	E000
2		3 (Tentative)	C200 C210 C220 C250a C250b,c* I220				R250*		A250a A250b,c*		E000
3	4 (Tentative)	3 (Tentative)	C320	R/W310	L/S310 S300 S350	L300 L310 L350	R300 G/R350	W300 G/W350	A350*		E000
4		5 (Tentative)	C440	R/W410	L/S410 S400	L400	R400	W400			N480, CC430, MM400, PE430, SC430, RP480, RS430* E000,
5	6 (Tentative)	5 (Tentative)	C500		S500	L590	R500	W500			MM400, RP480 N580, AW530 CD500, DU500 HF530, HG500 JF530, JL500 ML500, PW500 WT500, HS500 PA500, RS530* E000
6					S690	L690	R690	W690			BJ680, RP480 AW530, CD500, DU500, HF530 HG500, JF530 JL500, ML500 PW500, WT500 HS500, PA500 EC600, GC680 HR600, JB600 MH600, PL600 SE600, CL600 RS630*, E000
7											RP480, EC600 GC680 HR600 JB600 MH600 PL600, SE600 CL600, RS730* E000

Kanji Level	Kanji
K1	K101, K151
K2	K201, K202, K250
K3	K300, K350
K4	K400
K5	K500

1. Classes marked with an asterisk (*) are exclusively for that program's students. Students from other programs cannot take those classes.
2. You cannot take more than 1 class whose codes begin with the same letter (e.g. C210 and C220, R400 and R500 etc.). Also, you cannot take C and L/S or R/W classes at the same time.
3. You must attend every session of class even if the class meets two or more times each week.
4. If you are a JYPE, COLABS, or IPLA student continuing from the previous term, and your certificate is marked "J only" (e.g. J3only, J2only, etc.) you may register only for the designated "Japanese" classes in your exchange program and a Kanji class.
5. If a two-letter code appears in the "Other" section, the class is a seminar. These are International Co-learning Seminars, except for classes marked HS, PA, CL and RS. International and Japanese students take International Co-learning Seminars together. They participate in discussions and cooperative projects to deepen their intercultural understanding. Special auditing students, non-degree students and undergraduate students can receive credit for International Co-learning Seminars if they register them as General Education subjects. For further details, inquire with your department's Academic Affairs Section.
6. For kanji classes, please select just one class at your designated level, or one level below or above that level. (E.g. If your level is "K2," select one class at level K1, K2, or K3.) However, if the instructor does not give permission, you cannot take the class.

7. Subjects and Timetable by Level

Level 1(Beginning)

Course Title	JLP course code	Class	The course schedule	Notes
Beginning Comprehensive Japanese	C100		Wed 4-5・Fri 4-5	
	C110	a	Mon 1-2・Wed 1-2	a and b will provide the same contents. (same below)
		b	Mon 1-2・Wed 1-2	
	C150	a	Mon 1-2・Tue 1-2 Thu 1-2・Fri 1-2	Only Intensive Japanese Language Course Students Express
		b	Mon 1-2・Tue 1-2 Thu 1-2・Fri 1-2	
Beginning Japanese for Interaction	I120		Wed 1-2・Fri 1-2	
Beginning Japanese Reading Comprehension	R150	a	Tue 3・Fri 3	Only Intensive Japanese Language Course Students Express
		b	Tue 3・Fri 3	
Beginning Japanese Applicative Practice	A150	a	Tue 4	Only Intensive Japanese Language Course Students Express
		b	Tue 4	
Hiragana/Katakana	H150	a	4/11・12・15	A is only for Intensive Japanese Language Program Students.
		b	4/11・12・15	
Beginning Japanese Kanji/Vocabulary	K101		Mon 3・Thu 3	
	K151	a	Mon 3・Thu 3	
		b	Mon 3・Thu 3	
E-learning	E000		Thu4	

Timetable① Course code Class Instructor (Classroom)

	1 8:50- 10:20	2 10:30- 12:00	3 13:00- 14:30	4 14:40- 16:10	5 16:20- 17:50
Mon	C150a Ms. Mikoda (R115) b Ms. Uchiyama (R105)		K151a Ms. Uchiyama (C401) b Ms. Seki (C402)		
	C110a Ms. Mishima (C406) b Ms. Seki (C407)		K101 Ms. Y. Sato (C104)		
Tue	C150a Ms. Ono (R115) b Ms. Yamaguchi (R105)		R150a Ms. Y. Sato (R115) b Ms. Hayashi (R105)	A150a Ms. Hayashi (R115) b Mr. Uehara (R105)	
Wed	C110a Ms. Ono (C405) b Ms. Kashiwagi (C406)			C100 Ms. Otomo (C103)	
	I120 Ms. Backley (C407)				
Thu	C150a Ms. Kashiwagi (R115) b Ms. Moriwaki (R105)		K151a Ms. Y. Sato (C406) b Ms. Otomo (C407)	E000 Ms. Oshitani (M303)	
			K101 Ms. Backley (C405)		
Fri	C150a Ms. Yamaguchi (R115) b Ms. Murakami (R105)		R150a Ms. M. Takahashi (R115) b Ms. Usui (R105)	C100 Ms. M. Takahashi (A302)	
	I120 Ms. Mikoda (C406)				

Timetable②: H150

3days intensive course to master Hiragana and Katakana

	Class	1 8:50 ~ 10:20	2 10:30 ~ 12:00	3 13:00~ 14:30
Apr. 11	a	Ms. Kashiwagi		Ms. Y. Sato
Thu	b	Ms. Moriwaki		Ms. Otomo
Apr. 12	a	Ms. Yamaguchi		Ms. M. Takahashi
Fri	b	Ms. Murakami		Ms. Usui
Apr. 15	a	Ms. Mikoda		Ms. Uchiyama
Mon	b	Ms. Uchiyama		Ms. Seki

Class a: classroom R115
Class b: classroom R105

※The classrooms which are titled with "R" are located in International Exchange Building (A12 in the Kawauchi Campus Map).

Level 2(Basic)

Course Title	JLP course code	Class	The course schedule	Notes
Basic Comprehensive Japanese	C200		Tue 4-5・Thu 4-5	a and b will provide the same contents. (same below)
	C210	a	Mon 1-2・Wed 1-2	
		b	Mon 1-2・Wed 1-2	
	C220		Wed 1-2・Fri 1-2	b and c are only for Intensive Japanese Language Program Students. Express
	C250	a	Mon 1-2・Tue 1-2 Thu 1-2・Fri 1-2	
		b	Mon 1-2・Tue 1-2 Thu 1-2・Fri 1-2	
		c	Mon 1-2・Tue 1-2 Thu 1-2・Fri 1-2	
Basic Japanese for Interaction	I220		Wed 1-2・Fri 1-2	
Basic Japanese Reading Comprehension	R250	a	Tue 3・Fri 3	Only Intensive Japanese Language Course Students Express
		b	Tue 3・Fri 3	
Basic Japanese Applicative Practice	A250	a	Tue 4	b and c are only for Intensive Japanese Language Program Students. Express
		b	Tue 4	
		c	Tue 4	
Basic Japanese Kanji/Vocabulary	K201		Tue 3・Thu 3	
	K202		Wed 3	
	K250		Mon 3・Tue 3 Thu 3・Fri 3	Express
E-learning	E000		Thu 4	

Timetable

	1 8:50-10:20	2 10:30-12:00	3 13:00-14:30	4 14:40-16:10	5 16:20-17:50
Mon	C250a Mr. Choi (R107) b Ms. Mikoda (R115) c Ms. Uchiyama (R105)		K250 Ms. Yokosawa (R107)		
	C210a Ms. Azumi (C404) b Ms. Yamaguchi (C405)				
Tue	C250a Ms. Yokosawa (R107) b Ms. Ono (R115) c Ms. Yamaguchi (R105)		R250a Ms. Y. Sato (R115) b Ms. Hayashi (R105)	A250a Ms. Y. Sato (R107) b Ms. Hayashi (R115) c Mr. Uehara (R105)	
			K250 Ms. Yokosawa (R107)		
			K201 Ms. Otomo (C403)	C200 Ms. Abe (C103)	
Wed	C210a Ms. Suzuki (C303) b Ms. Mikoda (C307)		K202 Ms. M. Takahashi (C303)		
	C220 Ms. Mishima (C402)				
	I220 Ms. Usui (C408)				
Thu	C250a Ms. Suzuki (R107) b Ms. Kashiwagi (R115) c Ms. Moriwaki (R105)		K250 Mr. Choi (R107)	C200 Ms. Murakami (C205)	
			K201 Ms. Saito (C408)	E000 Ms. Oshitani (M303)	
Fri	C250a Ms. Moriwaki (R107) b Ms. Yamaguchi (R115) c Ms. Murakami (R105)		R250a Ms. M. Takahashi (R115) b Ms. Usui (R105)		
	C220 Ms. Azumi (C402)		K250 Ms. Endo (R107)		
	I220 Ms. Backley (C408)				

※ The classrooms which are titled with "R" are located in International Exchange Building (A12 in the Kawauchi Campus Map).

Level 3 (Pre- Intermediate)

Course Title	JLP course code	The course schedule	Notes
Pre-Intermediate Comprehensive Japanese	C320	Wed 1-2・Fri 1-2	
Pre-Intermediate Japanese Reading Comprehension/Writing	R/W310	Wed 1-2	
Pre-Intermediate Japanese Listening Comprehension/Speaking	L/S310	Mon 1-2	
Pre-Intermediate Japanese Grammar/Reading	G/R350	Tue 1・Fri 1	Express
Pre-Intermediate Japanese Grammar/Writing	G/W350	Tue 2・Fri 2	Express
Pre-Intermediate Japanese Listening Comprehension	L300	Mon 5	
	L350	Mon 1・Thu 1	Express
Pre-Intermediate Japanese Speaking/Conversation	S300	Mon 3	
	S350	Mon 2・Thu 2	Express
Pre-Intermediate Japanese Reading Comprehension	R300	Tue 2	
Pre-Intermediate Japanese Writing/Composition	W300	Wed 3	
Pre-Intermediate Japanese Applicative Practice	A350	Tue 4	Express
Pre-Intermediate Japanese Kanji/Vocabulary	K300	Tue 3・Fri 3	
	K350	Mon 3・Tue 3 Thu 3・Fri 3	Express
E-learning	E000	Thu 4	

Timetable

timetable

	1 8:50-10:20	2 10:30-12:00	3 13:00-14:30	4 14:40-16:10	5 16:20-17:50
Mon	L350 Mr. Choi (R107)	S350 Mr. Choi (R107)	K350 Ms. Yokosawa (R107)		L300 Mr. Choi (C103)
	L/S310 Ms. Yokosawa (C306)		S300 Mr. Sugawara (C403)		
Tue	G/R350 Ms. Yokosawa (R107)	G/W350 Ms. Yokosawa (R107)	K350 Ms. Yokosawa (R107)	A350 Ms. Y. Sato (R107)	
		R300 Mr. Uehara (C406)	K300 Ms. Abe (C404)		
Wed	C320 Ms. Azumi (C403)		W300 Ms. Yamaguchi (C405)		
	R/W310 Ms. Yamaguchi (C202)				
Thu	L350 Ms. Suzuki (R107)	S350 Ms. Suzuki (R107)	K350 Mr. Choi (R107)	E000 Ms. Oshitani (M303)	
Fri	G/R350 Ms. Moriwaki (R107)	G/W350 Ms. Moriwaki (R107)	K350 Ms. Endo (R107)		
	C320 Ms. Usui (C403)		K300 Ms. Uchiyama (C204)		

※The classrooms which are titled with “R” are located in International Exchange Building (A12 in the Kawauchi Campus Map).

Level 4 (Intermediate)

Course Title	JLP course code	The course schedule	Notes
Intermediate Comprehensive Japanese	C440	Wed 1-2・Fri 1-2	
Intermediate Japanese Reading Comprehension/Writing	R/W410	Wed 1-2	
Intermediate Japanese Listening Comprehension/Speaking	L/S410	Mon 1-2	
Intermediate Japanese Listening Comprehension	L400	Wed 4	
Intermediate Japanese Speaking/Conversation	S400	Tue 2	
Intermediate Japanese Reading Comprehension	R400	Tue 3	
Intermediate Japanese Writing/Composition	W400	Tue 1	
Intermediate Japanese Kanji/Vocabulary	K400	Wed 3・Fri 4	
Intermediate Japanese for JLPT N2	N480	Thu 3	
Intermediate Research Seminar	RS430	Wed 4	Only DEEP-Bridge U students
E-learning	E000	Thu 4	

Intermediate Co-learning Seminar Title	JLP course code	The course schedule	Notes
Cross-cultural Communication	CC430	Tue 3	Course Code: CB23146
Multimedia Based Mutual language and culture understanding through Manga and Anime	MM400	Mon 3	Course Code: CB00159
Developing Performative Exercises for Japanese Conversation	PE430	Wed 3	Course Code: CB33152
Seeing Home Country and Area from Japan	SC430	Fri 4	Course Code: CB54131
Solve regional problems in Akiu Onsen through tourism business	RP480	Mon 2	Course Code: CB12154

Timetable

	1 8:50-10:20	2 10:30-12:00	3 13:00-14:30	4 14:40-16:10
Mon	L/S410 Mr. Sugawara (C403)	RP480 Ms. Watanabe (A302)	MM400 Ms. Hayashi (C204)	
Tue	W400 Ms. A. Takahashi (M303)	S400 Mr. Nakamura (C407)	R400 Ms. S. Sato (C405) CC430 Ms. Suematsu (C408)	
Wed	C440 Mr. Soejima (C404)		K400 Ms. Otomo (C402)	L400 Ms. Usui (C405)
	R/W410 Ms. Uchiyama (C301)		PE430 Ms. Backley (C307)	RS430 Ms. Hayashi (C408)
Thu			N480 Mr. Soejima (M406B)	E000 Ms. Oshitani (M303)
Fri	C440 Ms. Mishima (C404)			K400 Mr. Choi (C204) SC430 Ms. Mishima (C406)

※ : Co-learning Seminar(p.8)

Level 5 (Upper-Intermediate)

Course Title	JLP course code	Class	The course schedule	Notes
Upper-Intermediate Comprehensive Japanese	C500		Fri 1-2	
Upper-Intermediate Japanese Listening Comprehension	L590		Thu 2	General Education : Japanese A-1, A-2 Course Code : CB42103, CB42105
Upper-Intermediate Japanese Reading Comprehension	R500		Tue 3	
Upper-Intermediate Japanese Speaking/Conversation	S500		Tue 5	
Upper-Intermediate Japanese Writing/Composition	W500		Wed 3	
Upper-Intermediate Japanese Kanji/Vocabulary	K500	a b	Mon 4 Wed 5	a and b will provide the same contents.
Upper-Intermediate Japanese for JLPT N1	N580		Wed 3	
Upper-Intermediate Japanese Culture Seminar: An Introduction to Early Modern Handwritten Sources	HS500		Intensive summer class 8/19-23	First day: 19th Aug. 8:50 ~ 16:10 Class room : R115 kenichiro.aratake.c2*tohoku.ac.jp Replace * with @ in email address. Those wishing to register for this class should contact us at the above address by June 11.
Upper-intermediate Research Seminar: Practical Japanese for Academic Research	PA500		Tue 2	
Upper-Intermediate Research Seminar	RS530		Wed 4	Only DEEP-Bridge U students
E-learning	E000		Thu 4	

Upper-Intermediate Co-learning Seminar Title	JLP course code	The course schedule	Notes
Around the World: Journey of Language and Culture	AW530	Tue 5	Course Code : CB25119
Cultural Diversity in Japanese Society	CD500	Fri 2	Course Code : CB33153
Deepening One's Understanding of Oneself and Others	DU500	Wed 5	Course Code : CB35113
Modern Japanese History in Film	HF530	Tue 5	Course Code : CB25118
How to Build a Global Career	HG500	Tue 4	Course Code : CB24147
Japanese Language and Culture in Film	JF530	Mon 4	Course Code : CB00157
Japanese Language in Contrast	JL500	Wed 2	Course Code : CB32129
Japanese Modern Literature	ML500	Thu 4	Course Code : CB44121
Playback Theater Workshop : basic	PW500	Mon 3	Course Code : CB00054
What is "Tabunkakyosei"?	WT500	Mon 5	

Timetable

	1 8:50-10:20	2 10:30-12:00	3 13:00-14:30	4 14:40-16:10	5 16:20-17:50
Mon			PW500 Ms. Mushiaki (C203)	K500a Ms. Hayashi (C203) JF530 Mr. Soejima (A403)	WT500 Ms. Shimasaki (Kawauchi South Campus Graduate School of Arts and Letters Building 701)
Tue		PA500 Ms. Sugaya (M601Right)	R500 Mr. Nakamura (C406)	HG500 Ms. Monma (A403)	S500 Ichinose (C104) AW530 Mr. Tabayashi and others (C201) HF530 Mr. Klautau (A406)
Wed		JL500 Mr. Uehara (A205)	W500 Ms. S. Sato (C406) N580 Mr. Soejima (M406B)	RS530 Ms. Hayashi (C408)	K500b Ms. Hayashi (A202) DU500 Ms. Kojima (A305)
Thu		L590 Mr. Yoshimoto (M304)		ML500 Ms. Mushiaki (A305) E000 Ms. Oshitani (M303)	
Fri	C500 Mr. Sugawara (C405)	CD500 Ms. Mizumatsu (A402)			

※ : Co-learning Seminar (p.8)

Level 6 (Advanced)

Course Title	JLP course code	Class	The course schedule	Notes
Advanced Japanese Listening Comprehension	L690		Tue 2	General Education: Japanese E-1, E-2 Course Code: CB22109, CB22118
Advanced Japanese Speaking/Conversation	S690		Thu 4	General Education: Japanese C-1, C-2 Course Code: CB44105, CB44106
Advanced Japanese Reading Comprehension	R690		Tue 3	General Education: Japanese I-1, I-2 Course Code: CB23115, CB23125
Advanced Japanese Writing/Composition	W690		Thu 3	General Education: Japanese G-1, G-2 Course Code: CB43108, CB43113
Advanced Business Japanese	BJ680	a	Wed 3	a and b will provide the same contents. (same below)
		b	Thu 6	
Advanced Japanese Culture Seminar: Japanese Classical Literature	CL600		Thu 3	
Advanced Research Seminar	RS630	a	Tue 4	Only DEEP-Bridge U students
		b	Wed 4	
E-learning	E000		Thu 4	

Advanced Co-learning Seminar Title	JLP course code	The course schedule	Notes
Educational Problems in Contemporary Society	EC600	Mon 3-4 (Alternate)	Course Code: CB00155
Global Communication	GC680	Tue 1	Course Code: CB21133
Understanding of Human Resources Management Systems on Japanese Companies and How to Work	HR600	Wed 5	Course Code: CB35114
Buddhism and Japan	JB600	Tue 2	Course Code: CB22123
Intellectual History of Modern Japan	MH600	Fri 2	Course Code: CB52145
Intercultural Communication Studies :Application, Personal Leadership	PL600	Mon 2	Course Code: CB12155
Japanese Society from External Perspectives	SE600	Tue 4	Course Code: CB24146

Timetable

	1 8:50-10:20	2 10:30-12:00	3 13:00-14:30	4 14:40-16:10	5 16:20-17:50	6 18:00-19:30
Mon		PL600 Ms. Yamamoto (C307)	EC600 Ms. Lai (C407)			
Tue	GC680 Ms. Yamamoto (A303)	L690 Mr. Soejima (C402) JB600 Mr. Klautau (C305)	R690 Ms. Sugaya (C402)	SE600 Mr. Nakamura (C104) RS630a Ms. S. Sato (C402)		
Wed			BJ680a Ms. Suzuki (M404A-B)	RS630b Ms. Hayashi (C408)	HR600 Mr. Takeuchi (A403)	
Thu			W690 Mr. Yoshimoto (C204) CL600 Ms. S. Sato (C404)	S690 Mr. Yoshimoto (C204) E000 Ms. Oshitani (M303)		BJ680b Ms. Suzuki (A306)
Fri		MH600 Mr. Morikawa (A404)				

※ : Co-learning Seminar (p.8)

Level 7(Superior)

Course Title	JLP course code	The course schedule	Notes
Superior Research Seminar	RS730	Tue 4	Only DEEp-Bridge U students
E-learning	E000	Thu 4	

Timetable

	1 8:50-10:20	2 10:30-12:00	3 13:00-14:30	4 14:40-16:10	5 16:20-17:50
Mon					
Tue				RS730 Ms. S. Sato (C402)	
Wed					
Thu				E000 Ms. Oshitani (M303)	
Fri					

8. Class Schedule by level

Level 1

	April	May	June	July	August
C100	4/10			7/19	
C110a	4/10				7/29
C110b	4/10				7/29
C150a	4/16		6/10		
C150b	4/16		6/10		
I120	4/10			7/19	
R150a	4/16		6/7		
R150b	4/16		6/7		
A150a	4/16		6/4		
A150b	4/16		6/4		
H150a	4/11 — 4/15				
H150b	4/11 — 4/15				
K101	4/8			7/22	
K151a	4/18				8/1
K151b	4/18				8/1
E000	4/11			7/18	

Level 2

	April	May	June	July	August
C200	4/9			7/18	
C210a	4/10			7/24	
C210b	4/10			7/24	
C220	4/10			7/17	
C250a	4/11		6/4		
C250b			6/11		7/29
C250c			6/11		7/29
I220	4/10			7/17	
R250a			6/11	7/26	
R250b			6/11	7/26	
A250a	4/16		6/4		
A250b			6/11	7/23	
A250c			6/11	7/23	
K201	4/9			7/16	
K202	4/10			7/24	
K250	4/11		6/4		
E000	4/11			7/18	

Level 3

	April	May	June	July	August
C320	4/12			7/26	
R/W310	4/10			7/17	
L/S310	4/15				8/5
G/R350			6/7	7/19	
G/W350			6/7	7/19	
L300	4/8				7/29
L350			6/6	7/22	
S300	4/8				7/29
S350			6/6	7/22	
R300	4/16			7/23	
W300	4/10			7/17	
A350			6/11	7/23	
K300	4/9			7/16	
K350			6/6	7/22	
E000	4/11			7/18	

Level 4

	April	May	June	July	August
C440	4/12			7/24	
R/W410	4/10			7/17	
L/S410	4/15				8/5
L400	4/10			7/17	
S400	4/9			7/16	
R400	4/9			7/16	
W400	4/9			7/16	
K400	4/10			7/17	
N480	4/11			7/25	
CC430	4/9			7/23	
MM400	4/15				8/8
PE430	4/10			7/24	
SC430	4/12			7/26	
RP480	4/8 ----- 4/15 ---- 4/22 -- 5/11-- 5/18-- 5/25 5/27				
RS430	4/10			7/24	
E000	4/11			7/18	

Level 5

	April	May	June	July	August
C500	4/12			7/19	
L590	4/11				8/1
R500	4/9			7/16	
S500	4/9			7/16	
W500	4/10			7/17	
K500a	4/8				7/29
K500b	4/10			7/17	
N580	4/10			7/24	
AW530	4/9			7/23	
CD500	4/12			7/26	
DU500	4/10			7/24	
HF530	4/9			7/23	
HG500	4/9			7/23	
JF530	4/15				8/8
JL500	4/10			7/24	
ML500	4/11			7/25	
PW500	4/15	5/20	6/24	7/22-7/29	Summer Class 7/27-28
WT500	4/8				7/29
HS500					Summer Class 8/19-23
PA500	4/9			7/23	
RS530	4/10			7/24	
E000	4/11			7/18	

Level 6

	April	May	June	July	August
L690	4/9				8/6
S690	4/11				8/1
R690	4/9				8/6
W690	4/11				8/1
BJ680a	4/10			7/24	
BJ680b	4/11			7/25	
EC600	4/15			7/29	
GC680	4/9			7/23	
HR600	4/10			7/24	
JB600	4/9			7/23	
MH600	4/12			7/26	
PL600	4/8				8/5
SE600	4/9			7/23	
CL600	4/11			7/18	
RS630a	4/9			7/23	
RS630b	4/10			7/24	
E000	4/11			7/18	

Level 7

	April	May	June	July	August
RS730	4/9			7/23	
E000	4/18			7/25	

9. E-learning Program

E-learning is a form of study using the Internet. It enables you to study Japanese using Japanese language learning programs and tools on the Web.

1. URLs for Japanese E-learning programs can be found below.

<http://nihongo-e-na.com/eng/>

<http://nihongo-e-na.com/jpn/>

2. ALC NetAcademy Japanese Course 2

This is an E-learning program used at Tohoku University. Using this program requires a Tohoku University student number and password. If you don't have an ID and password, please inquire at your department's Academic Affairs Section or General Affairs Section. It will take about one week to obtain them.

Levels	Basic through Intermediate
Course Type	Characters (1 unit), Reading (30 units), Listening (30 units), Vocabulary (300 units), Mini-Test (12 units)
Instructions	On campus: log in to https://netacademy.cite.tohoku.ac.jp/anet2/ (use your student ID number and password) Off campus: requires SRP authentication (attend the guidance session if you don't know how to do this)

3. E-learning Program Guidance

Guidance sessions for the E-learning program will be held as follows. At these sessions, we will explain how to use various programs, with an emphasis on ALC NetAcademy.

April 11 (Thu.): 14:40 -16:10 M303 (Multimedia Education and Research Complex)

April 18 (Thu.): 14:40 -16:10 M303 (Multimedia Education and Research Complex)

10. Contact Information

Inquiries about Japanese Classes

If you don't know which classes to register, or have problems with your classes, please ask your program coordinator. Please send an inquiry by email first. If you need to meet in person, please make an appointment by email.

Program Name	Coordinator (upper row : main coordinator in charge)	Department/Email Address
JYPE COLABS	Professor Satoshi UEHARA	Kawauchi Kita Campus, Kawakita Joint Building 520 Email: uehara * he.tohoku.ac.jp
	Associate Professor Kensaku SOEJIMA	Kawauchi Kita Campus, Kawakita Joint Building 517 Email: kensaku * tohoku.ac.jp
IPLA	Professor Sekiko SATO	Kawauchi Kita Campus, Kawakita Joint Building 518 Email: sekiko.sato.e8*tohoku.ac.jp
	Senior Assistant Professor Masako HAYASHI	Kawauchi Kita Campus, Kawakita Joint Building 519 Email: masako * tohoku.ac.jp
DEEP-Bridge	Professor Sekiko SATO	Kawauchi Kita Campus, Kawakita Joint Building 518 Email: sekiko.sato.e8*tohoku.ac.jp
	Senior Assistant Professor Masako HAYASHI	Kawauchi Kita Campus, Kawakita Joint Building 519 Email: masako * tohoku.ac.jp
Intensive Japanese Language Program	Senior Assistant Professor Masako HAYASHI	Kawauchi Kita Campus, Kawakita Joint Building 519 Email: masako * tohoku.ac.jp
	Professor Satoshi UEHARA	Kawauchi Kita Campus, Kawakita Joint Building 520 Email: uehara * he.tohoku.ac.jp
Miscellaneous	Associate Professor Kensaku SOEJIMA	Kawauchi Kita Campus, Kawakita Joint Building 517 Email: kensaku * tohoku.ac.jp
	Professor Satoshi UEHARA	Kawauchi Kita Campus, Kawakita Joint Building 520 Email: uehara * he.tohoku.ac.jp

※ The location of the Kawakita Joint Building is shown on A07 in the Kawauchi Campus Map.

※ Replace * with @ in email addresses.

Inquiries about Official Procedures

(Class Registration, Issuance of Academic Reports (Rishuu Shoumeisho) etc.)

Student Exchange Division, International Education Section

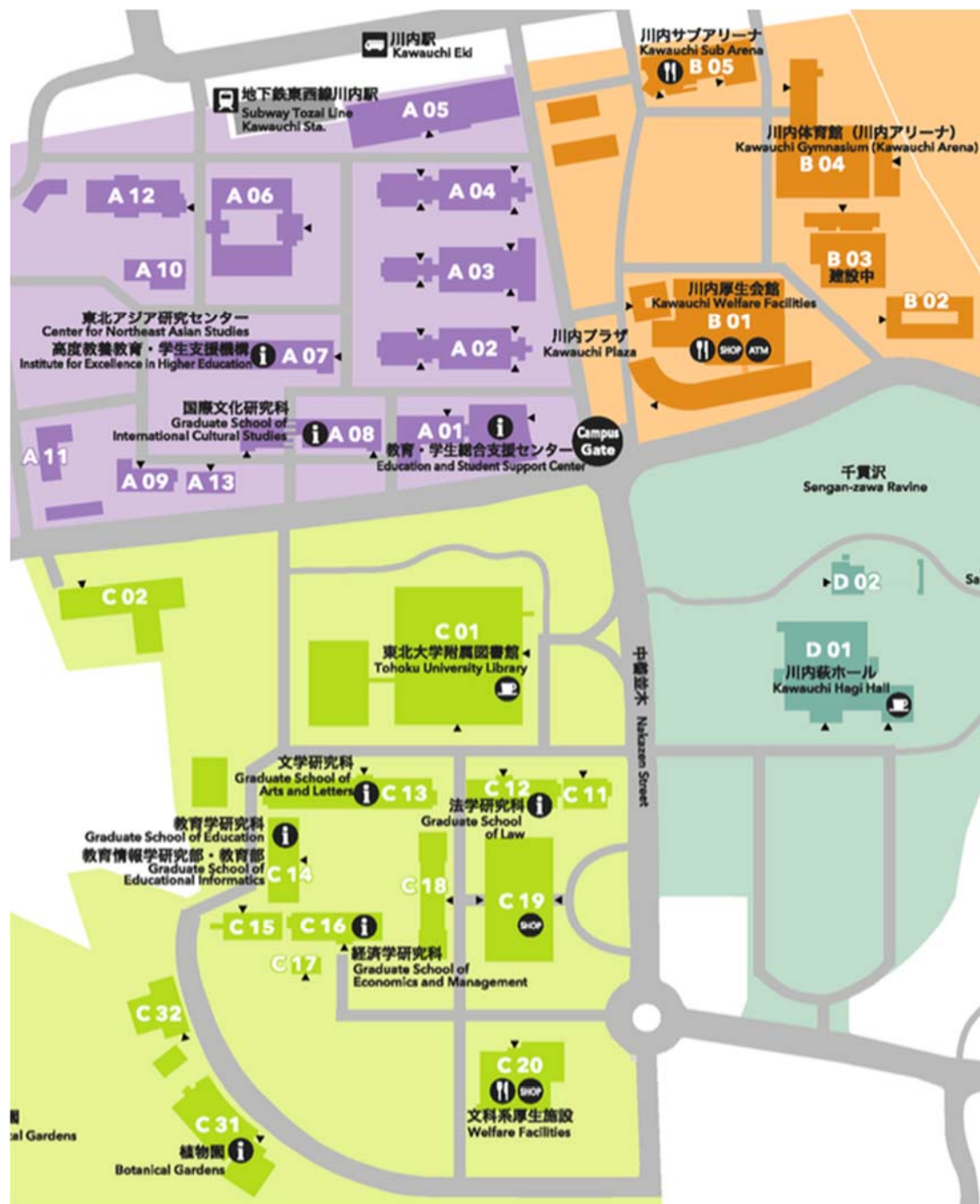
Kawauchi Kita Campus Education and Student Support Center, 2F (see A01 in the Kawauchi Campus Map)

Phone: 022-795-7817

Email: sed2*grp.tohoku.ac.jp

Replace * with @ in email addresses.

11. Kawauchi Campus Map

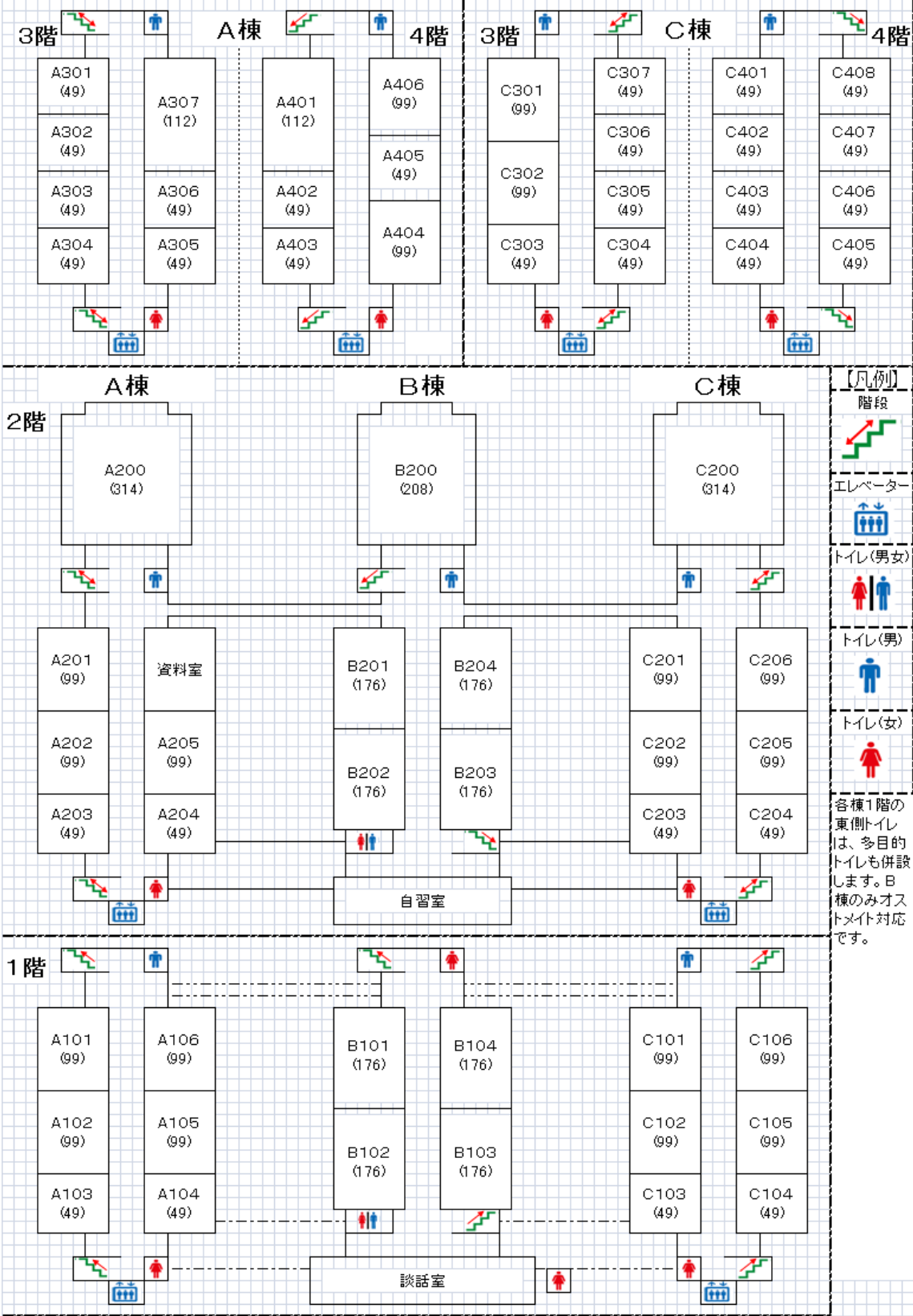


- A 01** 教育・学生総合支援センター
Education and Student Support Center
- A 02** 講義棟A棟
Lecture Rooms A
- A 03** 講義棟B棟
Lecture Rooms B
- A 04** 講義棟C棟
Lecture Rooms C
- A 05** マルチメディア教育研究棟 (教育情報基盤センター)
Multimedia Education and Research Complex (Center for Information Technology in Education)
- A 06** 学生実験棟
Student Laboratories
- A 07** 川北合同研究棟
Kawauchi Research Forum
(高度教養教育・学生支援機構/東北アジア研究センター)
(Institute for Excellence in Higher Education / Center for Northeast Asian Studies)
- A 08** 国際文化研究棟
Graduate School of International Cultural Studies
- A 09** 保健管理センター
Student Health Care Center
- A 10** 教育研究基盤支援棟 4
Education and Research Base Support Building 4
- A 11** 教育研究基盤支援棟 5
Education and Research Base Support Building 5
- A 12** 国際交流棟
International Exchange Building
- A 13** 学生相談所
University Counseling Center

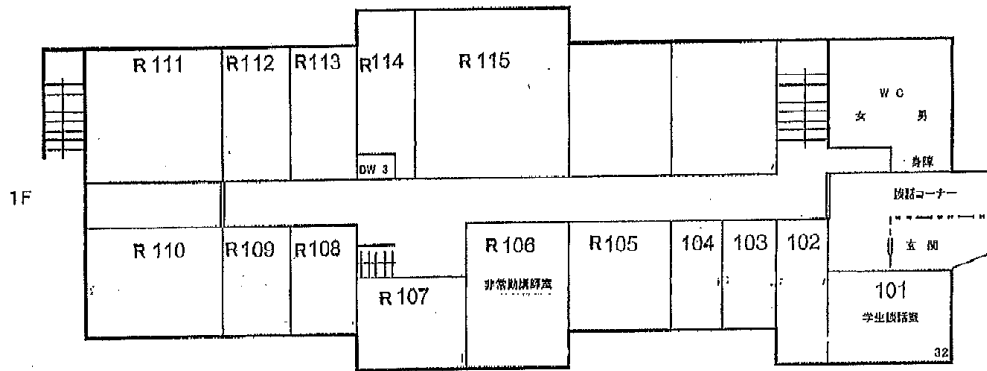
- B 01** 川内厚生会館
Kawauchi Welfare Facilities
- B 02** 川内サークル部室棟
Kawauchi Circle and Club Building
- B 03** 川内課外活動共用施設 (川内ホール)
Kawauchi Extracurricular Activity Shared Facilities (Kawauchi Hall)
- B 04** 川内体育館 (川内アリーナ)
Kawauchi Gymnasium (Kawauchi Arena)
- B 05** 川内サブアリーナ
Kawauchi Sub Arena

- C 01** 東北大学附属図書館
Tohoku University Library
- C 02** 入試センター
Admission Center
- C 11** 文・法合同研究棟
Arts and Letters / Law Joint Building
- C 12** 法学研究科棟
Graduate School of Law
- C 13** 文学研究科棟
Graduate School of Arts and Letters
- C 14** 文科系総合研究棟 (教育学研究科)
New Humanities Building (Graduate School of Education)
- C 15** 文科系合同研究棟
Humanities Building
- C 16** 経済学研究科棟
Graduate School of Economics and Management
- C 17** 経済学研究科演習室
Seminar Rooms
- C 18** 中講義棟
Lecture Rooms
- C 19** 文科系総合講義棟
Lecture Rooms
- C 20** 文科系厚生施設 (メイプルパーク川内)
Welfare Facility (Maple Park Kawauchi)

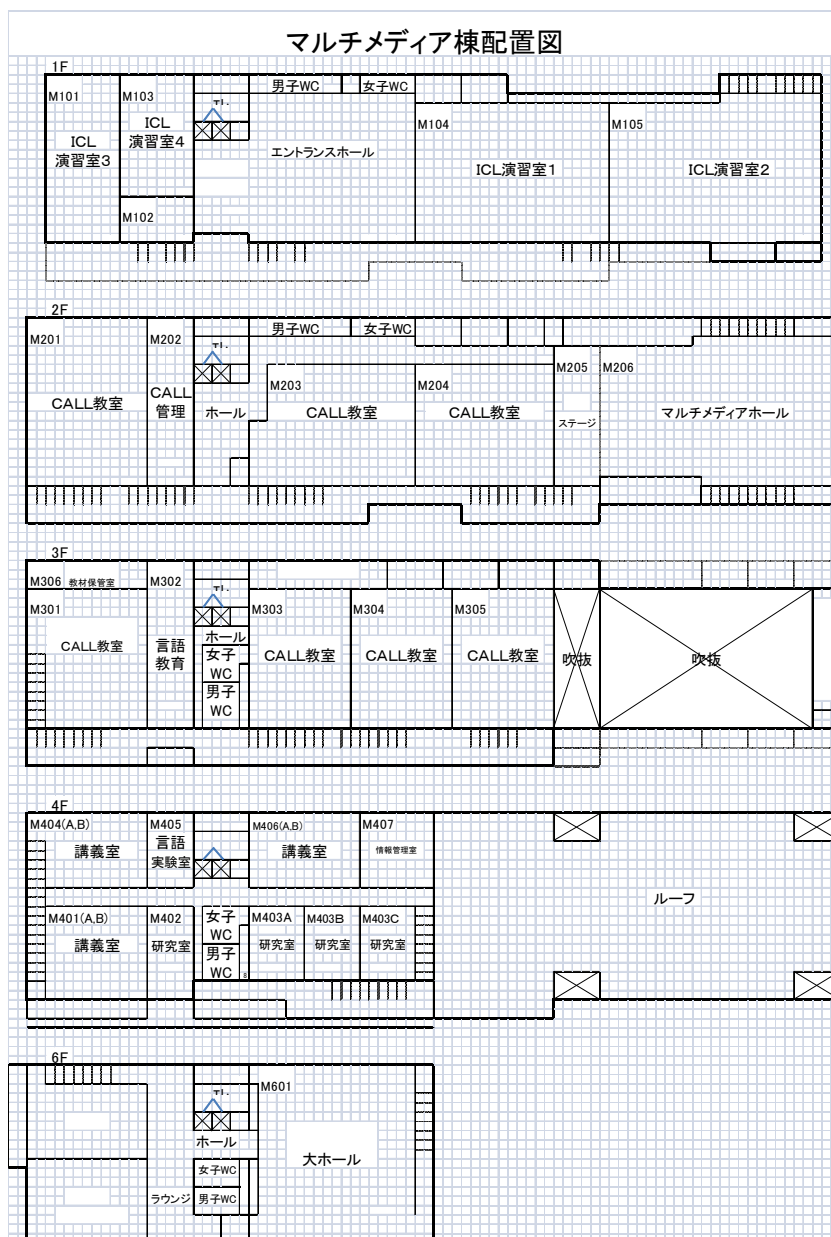
12. Classroom Locations
A, B, and C Classrooms (A02, A03, A04)



International Exchange Building (A12)



Multimedia Education and Research Complex (A05)



Class Registration Card (Submit to Class Instructor)

Name	In English: Alphabet: Family name First name Middle name	In Kanji: Family name First name	J19A□□□□		
Enrollment Status	<input type="checkbox"/> Undergraduate <input type="checkbox"/> Graduate (<input type="checkbox"/> MA <input type="checkbox"/> Doctoral) <input type="checkbox"/> Undergrad. Research Student <input type="checkbox"/> Grad. Research Student <input type="checkbox"/> Research Institute Research Student <input type="checkbox"/> Exchange Student (<input type="checkbox"/> JYPE/ <input type="checkbox"/> COLABS/ <input type="checkbox"/> IPLA/ <input type="checkbox"/> DEEP <input type="checkbox"/> DEEP-BridgeU <input type="checkbox"/> DEEP-BridgeG/ <input type="checkbox"/> Other _____ <input type="checkbox"/> Other _____	Japanese Level (Kanji Level)			
		Department			
		Academic Advisor's Name			
		Subject		Day	M T W Th F

Class Registration Card (Submit to Class Instructor)

Name	In English: Alphabet: Family name First name Middle name	In Kanji: Family name First name	J19A□□□□		
Enrollment Status	<input type="checkbox"/> Undergraduate <input type="checkbox"/> Graduate (<input type="checkbox"/> MA <input type="checkbox"/> Doctoral) <input type="checkbox"/> Undergrad. Research Student <input type="checkbox"/> Grad. Research Student <input type="checkbox"/> Research Institute Research Student <input type="checkbox"/> Exchange Student (<input type="checkbox"/> JYPE/ <input type="checkbox"/> COLABS/ <input type="checkbox"/> IPLA/ <input type="checkbox"/> DEEP <input type="checkbox"/> DEEP-BridgeU <input type="checkbox"/> DEEP-BridgeG/ <input type="checkbox"/> Other _____ <input type="checkbox"/> Other _____	Japanese Level (Kanji Level)			
		Department			
		Academic Advisor's Name			
		Subject		Day	M T W Th F

Class Registration Card (Submit to Class Instructor)

Name	In English: Alphabet: Family name First name Middle name	In Kanji: Family name First name	J19A□□□□		
Enrollment Status	<input type="checkbox"/> Undergraduate <input type="checkbox"/> Graduate (<input type="checkbox"/> MA <input type="checkbox"/> Doctoral) <input type="checkbox"/> Undergrad. Research Student <input type="checkbox"/> Grad. Research Student <input type="checkbox"/> Research Institute Research Student <input type="checkbox"/> Exchange Student (<input type="checkbox"/> JYPE/ <input type="checkbox"/> COLABS/ <input type="checkbox"/> IPLA/ <input type="checkbox"/> DEEP <input type="checkbox"/> DEEP-BridgeU <input type="checkbox"/> DEEP-BridgeG/ <input type="checkbox"/> Other _____ <input type="checkbox"/> Other _____	Japanese Level (Kanji Level)			
		Department			
		Academic Advisor's Name			
		Subject		Day	M T W Th F

Class Registration Card (Submit to Class Instructor)

Name	In English: Alphabet: Family name First name Middle name	In Kanji: Family name First name	J19A□□□□		
Enrollment Status	<input type="checkbox"/> Undergraduate <input type="checkbox"/> Graduate (<input type="checkbox"/> MA <input type="checkbox"/> Doctoral) <input type="checkbox"/> Undergrad. Research Student <input type="checkbox"/> Grad. Research Student <input type="checkbox"/> Research Institute Research Student <input type="checkbox"/> Exchange Student (<input type="checkbox"/> JYPE/ <input type="checkbox"/> COLABS/ <input type="checkbox"/> IPLA/ <input type="checkbox"/> DEEP <input type="checkbox"/> DEEP-BridgeU <input type="checkbox"/> DEEP-BridgeG/ <input type="checkbox"/> Other _____ <input type="checkbox"/> Other _____	Japanese Level (Kanji Level)			
		Department			
		Academic Advisor's Name			
		Subject		Day	M T W Th F