

A Guide to the Tohoku University Japanese Language Program at Kawauchi (Updated November 12, 2018)

Second Term, AY 2018
Tohoku University Institute for Excellence in Higher Education

The Institute for Excellence in Higher Education offers the Japanese Language Program for International Students to improve the Japanese language proficiency of foreign students and researchers at Tohoku University, and other universities in Sendai. We hope that it will facilitate your everyday activities and research. There are a variety of classes, from beginner to advanced levels, so you can study at the Japanese level appropriate for you.

Table of Contents

1. Application/Class Registration
 2. Notes on Attending Class
 3. Orientation and Registration Guidance
 4. Level and Subject Codes
 5. Grading and Progression System
 6. Eligibility for Classes
 7. Subjects and Timetable by Level
 8. Class Schedule by level
 9. E-learning Program
 10. Contact Information
 11. Kawauchi Campus Map
 12. Classroom Locations
- Appendix: Class Registration Cards

Application/Class Registration Schedule
BE SURE TO REGISTER DURING THE REGISTRATION PERIOD!

Application Period: September 14 (Fri.) - October 19 (Fri.)

Registration Period: October 15 (Mon.) - 26 (Fri.)

Application Period for Half-Term Classes (Second Part of Term): November 22 (Thu.) - 30 (Fri.)

Registration Period for Half-Term Classes (Second Part of Term): December 3 (Mon.) - 11 (Tue.)

1. Application/Class Registration

| | | | | | | | | |
|---|------|---|------|---|---|--------------------------------------|------|----|
| Do you have a Tohoku University ID? | →YES | Are you an undergraduate JYPE, COLABS, IPLA, or DEEp-Bridge U student continuing from the spring 2018 term? | →YES | You do not need to complete Step 1: Application. You will be issued a Japanese Language Program number and certificate by email. Proceed to Step 2: Class Registration. | | | | |
| | | | →NO | Were you notified of your Japanese level for the new term? | →YES | Will you take classes at that level? | →YES | →A |
| | NO | | | | →NO | | →B | |
| | →NO | Will you enter Tohoku University in the new term? | | →YES | Do you belong to JYPE, COLABS, IPLA, DEEp-Bridge Undergraduate, the Intensive Japanese Language Course, or the Japan-Korea Cooperative Program? | →YES | →C | |
| →NO | | | | | | →D | | |
| →NO (Commuting from a local university) | | | | | | →E | | |

※You must submit an application even if you applied during the previous term.

Step 1: Application

A (enrolled at TU, have an assigned Japanese level, will not take the PT):

(1) Log in to the academic affairs system from the on-campus network to apply for classes.

URL: <https://jlpk.bureau.tohoku.ac.jp/entry/>

*Please be sure to register your Japanese Language Program number from the previous term and password with the system.

*Applications are accepted from September 14 to October 19.

*Applications for classes taught in the latter half of the term are accepted from November 22 to November 30.

(2) You will receive a Japanese Language Program number and Excel file by email. The Excel file is for those who are taking the placement test, so you need not submit it.

(3) Later, you will be sent a certificate showing your Japanese level for the new term.

(4) After the term starts, please perform Step 2.

B-1 (enrolled at TU, beginner, will not take the PT):

(1) Log in to the academic affairs system from the on-campus network to apply for classes.

URL: <https://jlpk.bureau.tohoku.ac.jp/entry/>

*Please be sure to choose "beginner" at the question 12 on the system.

*Applications are accepted from September 14 to October 19.

*Applications for classes taught in the latter half of the term are accepted from November 22 to November 30.

(2) You will receive a Japanese Language Program number and Excel file by email. The Excel file is for those who are taking the placement test, so you need not submit it.

(3) Later, you will receive a Level 1 (beginner) certificate.

(4) After the term starts, please perform Step 2.

B-2 (enrolled at TU, studied Japanese before, will take the PT):

(1) Log in to the academic affairs system from the on-campus network to apply for classes.

URL: <https://jlpk.bureau.tohoku.ac.jp/entry/>

* If you have a Japanese Language Program number and password from the previous term, please be sure to register them with the system.

*Applications are accepted from September 14 to October 19.

*Applications for classes taught in the latter half of the term are accepted from November 22 to November 30.

(2) You will receive a Japanese Language Program number and Excel file by email. You will also be provided a link to information on the placement test.

(3) Take the online placement test.

(4) Enter your test results in the Excel file and send it to the provided email address.

(5) You will be sent a certificate showing your Japanese level. If you were notified of a level for the new term, but also have a level determined by your test result, your level will be whichever is higher.

(6) After the term starts, please perform Step 2.

C-1 (not yet enrolled at TU, beginner, participating in the above programs, will not take the PT):

(1) You will receive a Japanese Language Program number and Excel file by email. The Excel file is for those who are taking the placement test, so you need not submit it.

(2) Later, you will receive a Level 1 (beginner) certificate.

(3) After entering TU, please perform Step 2.

C-2 (not yet enrolled at TU, studied Japanese before, participating in the above programs, will take the PT):

(1) You will receive a Japanese Language Program number and Excel file by email. You will also be provided a link to information on the placement test.

(2) Take the online placement test.

(3) Enter your test results on the Excel file and send it to the provided email address.

(4) You will be sent a certificate showing your Japanese level.

(5) After entering TU, please perform Step 2.

D-1 (not yet enrolled at TU, beginner, general, will not take the PT):

(1) After entering TU, log in to the academic affairs system from the on-campus network to apply for classes.

URL: <https://jlpk.bureau.tohoku.ac.jp/entry/>

*Please be sure to choose "beginner" at the question 12 on the system.

*Applications are accepted from September 14 to October 19.

*Applications for classes taught in the latter half of the term are accepted from November 22 to November 30.

(2) You will receive a Japanese Language Program number and Excel file by email. The Excel file is for those who are taking the placement test, so you need not submit it.

(3) Later, you will receive a Level 1 (beginner) certificate.

(4) Please perform Step 2.

D-2 (not yet enrolled at TU, studied Japanese before, general, will take the PT):

(1) After entering TU, log in to the academic affairs system from the on-campus network to apply for classes.

URL: <https://jlpk.bureau.tohoku.ac.jp/entry/>

*Applications are accepted from September 14 to October 19.

*Applications for classes taught in the latter half of the term are accepted from November 22 to November 30.

(2) You will receive a Japanese Language Program number and Excel file by email. You will also be provided a link to information on the placement test.

(3) Take the online placement test.

(4) Enter your test results in the Excel file and send it to the provided email address.

(5) You will be sent a certificate showing your Japanese level.

(6) Please perform Step 2.

E (not affiliated with TU, will take the PT):

(1) Send an email to the below address, informing us of your desire to take classes in the Japanese Language

Program.

Address: jlpk@g-mail.tohoku-university.jp

*Applications are accepted from September 14 to October 19.

*Applications for classes taught in the latter half of the term are accepted from November 22 to November 30.

- (2) You will receive a survey by email.
- (3) Enter your answers on the survey form, and return it by email.
- (4) You will receive a Japanese Language Program number and Excel file by email. You will also be provided a link to information on the placement test.
- (5) Take the online placement test.
- (6) Enter your test results on the Excel file and send it to the provided email address.

- (7) If you are rated Level 2 (basic) or higher, you will be issued a Japanese Language Program number and certificate by email.
- (8) Please perform Step 2.

Step 2: Class Registration

- (1) Fill out the required items on the Class Registration Cards attached at the end of this guide.
- (2) Take your certificate and Class Registration Cards to classes suitable for your level; if you wish to register after attending the first class, ask for the instructor's permission.
 - *Class sizes are limited. Students will be accepted on a first-come basis.
 - *Some classes preferentially accept students from certain programs.
- (3) After receiving permission to take the class, give the Class Registration Card to the instructor.
 - *If the class is taught by multiple instructors, give the Class Registration Card to just one of them.
- (4) Log in to the academic affairs system and register your classes using the class registration screen.
 - URL: <https://jlpk.bureau.tohoku.ac.jp/student/login.php>
 - ※ You will only be able to register only classes for which you have received permission from the instructors.
 - ※ IPLA, and DEEP-Bridge U students will be informed about registration in a separate email. Do NOT register with the above system.
 - ※ Class registrations are accepted from October 15 to October 26.
 - ※ Registrations for classes taught in the latter half of the term are accepted from December 3 to December 11.

2. Notes on Attending Class

1. Be sure to register for classes. If you do not, you will not be able to take classes offered by this program.
2. You cannot register for classes after the deadline (October 26).
 - ※ The deadline to register for classes taught in the latter half of the term is December 11.
3. Students enrolled at universities in and around Sendai are eligible to take classes. Relatives etc. of international students are not eligible to attend classes.
 - ※ Those enrolled in universities other than Tohoku University are eligible to take classes if they are Level 2 or higher.
4. Read the syllabus before registering for classes to learn about class goals, content, and how performance is evaluated. If you have questions about registration or class content, please come to Registration Guidance (p.4).

Syllabus: <http://www.he.tohoku.ac.jp/SJLE/syllabi/>

(after September 19)

5. Please purchase your textbooks at the bookstore in the Kawauchi Campus Welfare Facilities (see B01 in the Kawauchi Campus Map). Using copied textbooks (paper photocopies, or digital copies downloaded from the Internet) in class is forbidden. Students using such copies will not be permitted to attend class. Making illegal copies of copyrighted materials is forbidden under Japanese law.
6. Class sizes are limited. Students will be accepted on a first-come basis, so you may not be able to take all your first-choice classes.

| | |
|--|-----------|
| Intensive Learning Classes up to Pre-intermediate (excluding H150, K151 and G350), RS430, RS530, RS630 | Limit: 10 |
| C100, C110, C120, I120, B170, M100, H150, C210, C220, B270, G350, N480, IU430, MM430, SC430, UJ430, PB480, L590, N580, CP530, JC530, JM500, JS500, LV500, MC500, PW500, TC530, L690, S690, R690, W690, BJ680, GC680, IC600, JB600, MH600, WA600, ML000 | Limit: 15 |
| K151, K101, K102, C320, S300, S310, C440, S400, S410, S500 | Limit: 20 |
| Other | Limit: 25 |

7. If you must be absent from class, inform the instructor directly or via a classmate. If you do not attend at least two-thirds of the total number of classes, you will receive a "D" (fail).
8. Important notices are posted on the bulletin boards on the south side of Lecture Room building A (see A02 in the Kawauchi Campus Map). Please check these periodically.
9. Failure to follow the above rules may result in losing eligibility to attend classes in this program.

3. Orientation and Registration Guidance

Orientation and Registration Guidance will be held as per the below schedule. Please attend one of the following sessions if you can.

| | 1st only JYPE/COLABS students | 2nd | 3rd IPLA students & others |
|---------------|-------------------------------------|-----------------------------------|-----------------------------------|
| Date/ Time | October 1 (Mon) 10:30~11:30 | October 2 (Tue) 12:00~13:00 | October 3 (Wed) 10:30~11:30 |
| Place | A401 | B101 | A105 |

| | 4th only DEEp-BridgeU students | 5th |
|---------------|--------------------------------------|------------------------------------|
| Date/ Time | October 11 (Thu) 12:00~13:00 | October 12 (Fri) 12:00~13:00 |
| Place | C303 | A101 |

※ Orientation and Registration Guidance will be held separately for the Intensive Japanese Language Course and Japan-Korea Program students.

4. Level and Subject Codes

1. Japanese levels are numbered 1 through 6. Attainment goals are shown in the below table.

| | Attainment Goals | CEFR/JFS | JLPT |
|---------------------------------|---|-----------------------|--|
| | | Level 1 (Beginner) | Students will acquire conversation, reading, and writing abilities necessary for daily life. |
| Level 2 (Basic) | Students will acquire speaking, listening, reading, and writing abilities for a variety of everyday situations. | A2.1 | N4 |
| Level 3 (Pre-intermediate) | Students will acquire basic Japanese skills needed for student life and attending university classes in Japan. | A2.2 | N3 |
| Level 4 (Intermediate) | Students will acquire skills needed to read articles and essays on familiar topics of interest and write simple reports. They will also learn to listen to lectures and express their own opinions in Japanese. | B1 | N2 |
| Level 5 (Upper-Intermediate) | Students will acquire Japanese skills needed to read academic texts, write reports, listen to lectures, and make presentations. | B2 | N1 |
| Level 6 (Advanced) | Students will acquire Japanese skills needed to understand specialized academic texts, write reports, listen to lectures related to their majors, and give seminar presentations. | C1 | |

CEFR: Common European Framework of Reference for Languages

JFS: JF Standard for Japanese-Language Education

JLPT: Japanese Language Proficiency Test

2. Please see below for an explanation of Subject Codes.

B 1 0 0

↑ ↑ ↑ ↑

Abbreviated Class Subject Japanese Level (Levels 1-6) Priority/Exclusive Program Countries that use/do not use Chinese characters

| | | | | | | |
|---|--|---|----------------------------|---|--|---|
| C(Comprehensive Japanese) | Learn grammar and vocabulary according to the students' level, extend "listening" "talking" "reading" "writing" skills, and comprehensively acquire Japanese language proficiency necessary for student life in Japan. | 0 | No Priority/ Non-exclusive | 0 | No restrictions | |
| B (Basic Japanese for Business Communication) | Learn elementary conversational skills needed for various aspects of everyday life in Japan, and simple expressions used in business. | 1 | JYPE/COLABS | 1 | For students from countries that do not use Chinese characters | |
| I (Beginning/Basic Japanese for Interaction) | Learn basic grammar, acquire listening, speaking, reading, and writing skills. Emphasis will be placed on acquiring communication skills. | | 2 | IPLA | 2 | For students from countries that use Chinese characters |
| M (Minimal Japanese) | Learn minimum necessary communication skills needed for life in Japan. | | 3 | DEEp-BridgeU (DEEp-Bridge undergraduate students) | | |
| G (Grammar) | Study grammar, build fundamental Japanese skills. | | 4 | IPLA/DEEp-BridgeU | | |
| L (Listening Comprehension) | Acquire listening skills necessary for student life, such as listening to lectures, understanding explanations, and so on. | | 5 | Intensive Japanese Language Program | | |
| S (Speaking/Conversation) | Acquire speaking skills necessary to student life, learn to make oral presentations. | | 6 | Japan-Korea Cooperative Program | | |
| R (Reading Comprehension) | Acquire fundamental reading comprehension skills necessary to read specialized/academic texts. | | 7 | GPEM | | |
| W (Writing/Composition) | Acquire fundamental writing skills necessary to write research plans, research papers, etc. | | 8 | DATentre (Employment Support Program) | | |
| P (Practice) | Comprehensively utilize grammatical knowledge and listening, speaking, reading, and writing skills to acquire real-world Japanese ability. | | 9 | General Education | | |
| A(Applicative Practice) | Acquire the ability to apply the Japanese language. | | | | | |
| H (Hiragana/Katakana) | Learn hiragana and katakana syllabaries. | | | | | |
| K (Kanji/Vocabulary) | Learn kanji and its related vocabulary. | | | | | |

5. Grading and Progression System

1. The grading scale for this program is as follows.

| | |
|----|---|
| AA | Particularly excellent (90-100 points). |
| A | Excellent (80-89 points). |
| B | Good (70-79 points). |
| C | Passed (60-69 points). |
| D | Failed (0-59 points). |
| E | Withdrew from the class. |

- ※ You will be notified of your grades at the end of each term. Upon request, your academic advisor can be notified of your grades too.
- ※ If you wish to withdraw from a class, contact the class's instructor. JYPE, COLABS, IPLA, and DEEP-BridgeU (DEEP-Bridge undergraduate) students should contact the Student Exchange Division. If you stop attending class without withdrawing, you will receive a "D."
- ※ Deadlines for dropping classes are as follows.
 Term-long Classes: November 30
 Half-term Classes (first part of the term): October 31
 Half-term Classes (second part of the term): December 26
- ※ You will also receive a "D" if you do not attend at least two-thirds of the total number of classes.
- ※ If you require an Academic Report (Rishuu Shoumeisho), please ask for it at the International Education Section of the Student Exchange Division (p.18).
- ※ In general, only JYPE, COLABS, IPLA, and DEEP-BridgeU students receive credit for classes registered in the Japanese Language Program; other students will not receive credit. However, some departments may approve credits for these classes. For details, inquire with the relevant staff at your department.

2. This program's progression system is as follows.

JYPE(Level 1-2), COLABS(Level 1-2), IPLA(Level 1-2), and DEEP-BridgeU Students

If you obtain a C or better, and your credits are approved, you may proceed to the next difficulty level the following term.

Other students

If you fulfill the conditions indicated on the table below, you may proceed to the next difficulty level the following term without taking a placement test.

| Current Term | Conditions | Following Term |
|--------------|--|----------------|
| Level 1 | Obtain an "AA" or "A" grade in both C1 and K1. | →Level 2 |
| Level 2 | Obtain an "AA" or "A" grade in both C2 and K2. | →Level 3 |
| Level 3 | 1. Obtain an "AA" or "A" grade in C3 or C4, or 2. Obtain more than 3 "AA" or "A" grades in Level 3 or 4 courses other than C3 and C4. | →Level 4 |
| Level 4 | | →Level 5 |
| Level 5 | 1. Obtain 2 "AA" or "A" grades in both C5 and another level 5 course, or 2. Obtain more than 3 "AA" or "A" grades in level 5 courses other than C5. | →Level 6 |

*Obtaining 2 "B" grades is considered equal to obtaining an "A"

6. Eligibility for Classes

Classes that can be taken at each level are as follows.

- ※ If your level is marked "Tentative," you may register for classes both at your tentative level, and one level below. (E.g. if you are "Level 4 (Tentative)," you may register for both Level 4 and Level 3 classes at the same time.)
- ※ If you are a JYPE, COLABS, IPLA, or DEEp-BridgeU student you must register for classes either in your tentative level, or one level below. You cannot register for classes both at your tentative level and one level below at the same time. (E.g. if you are "Level 4 (Tentative)," you must choose whether to register for Level 3 classes or Level 4 classes.)

| 2. Levels | | Comprehens ive | Grammar | Speaking | Listening | Reading | Writing | Application/ Practical | Kana | Miscellaneous |
|-----------|---------------|---|--------------------------|----------------------|--------------|--------------|---------|---------------------------|------|--|
| 1 | 2 (Tentative) | C100 C110 C120 C150* I120 B170 M100 | | | | R150* | | A150* | H150 | E000 |
| 2 | 3 (Tentative) | C210 C220 C250a C250b* B270 | | | | R250* | | A250* | | E000, ML000 |
| 3 | 4 (Tentative) | C320 | G/R310 G/W310 G350 | S300 S310 S350 | L300 L310 | R300 R350 | W300 | P350 A350* | | E000, ML000 |
| 4 | 5 (Tentative) | C440 | G/R410 G/W410 | S400 S410 S440 | L400 L410 | R400 | W400 | | | N480, IU430, MM430, SC430 UJ430, PB480 RS430* E000, ML000 |
| 5 | 6 (Tentative) | C560 | | S500 | L590 | R500 | W500 | A560* | | MM430, PB480 N580, CP530 JC530, JM500 JS500, LV500 MC500, PW500 TC530, CJ500 SW500, HS500 RS530*, E000 ML000 |
| 6 | | | | S690 | L690 | R690 | W690 | | | BJ680, PB480 CP530, JC530 JM500, JS500 LV500, MC500 PW500, TC530 CJ500, SW500 HS500, GC680 IC600, JB600 MH600, WA600 PH600, RS630* E000, ML000 |

| Kanji Level | Kanji |
|-------------|------------------|
| K1 | K102, K151* |
| K2 | K201, K202, K250 |
| K3 | K300, K350 |
| K4 | K400 |
| K5 | K500 |

1. Classes marked with an asterisk (*) are exclusively for that program's students. Students from other programs cannot take those classes.
2. You cannot take more than 1 class whose codes begin with the same letter (e.g. C210 and C220, R400 and R500 etc.). ~~Also, you cannot take C and M classes. C and G classes. C and G/R. G/W. S310 or L310 classes in level 3, and C and G/R. G/W. S410 or L410 classes in level 4 at the same time.~~
3. You must attend every session of class even if the class meets two or more times each week.
4. If you are a JYPE, COLABS, or IPLA student continuing from the previous term, and your certificate is marked "J only" (e.g. J3only, J2only, etc.) you may register only for the designated "Japanese" classes in your exchange program and a Kanji class.
5. If a two-letter code appears in the "Other" section, the class is a seminar. These are International Co-learning Seminars, except for classes marked CJ, HS, PH, SW, and RS. International and Japanese students take International Co-learning Seminars together. They participate in discussions and cooperative projects to deepen their intercultural understanding. Special auditing students, non-degree students, undergraduate students, and graduate students can receive credit for International Co-learning Seminars if they register them as General Education subjects. For further details, inquire with your department's Academic Affairs Section.
6. For kanji classes, please select just one class at your designated level, or one level below or above that level. (E.g. If your level is "K2," select one class at level K1, K2, or K3.) However, if the instructor does not give permission, you cannot take the class.

7. Subjects and Timetable by Level

Level 1(Beginning)

| Course | JLP course code | Class | The course schedule | Notes |
|---|-----------------|------------------------------------|--|---|
| Beginning Comprehensive Japanese | C100 | a | Tue 4-5・Thu 4-5 | a, b, and c will provide the same contents. (same below) |
| | | b | Tue 1-2・Fri 1-2 | |
| | | c | Mon 4-5・Wed 4-5 | |
| | C110 | a | Mon 1-2・Thu 1-2 | |
| | | b | Mon 1-2・Thu 1-2 | |
| | | c | Mon 1-2・Thu 1-2 | |
| C120 | | Wed 1-2・Fri 1-2 | | |
| C150 | | Mon 1-2・Tue 1-2 Thu 1-2・Fri 1-2 | Only Intensive Japanese Language Course Students Express | |
| Beginning Japanese for Interaction | I120 | | Wed 1-2・Fri 1-2 | |
| Beginning Japanese for Business Communication | B170 | | Wed 1-2 | |
| Minimal Japanese | M100 | | Tue 4-5・Thu 4-5 | |
| Beginning Japanese Reading Comprehension | R150 | | Tue 3・Fri 3 | Only Intensive Japanese Language Course Students Express |
| Beginning Japanese Applicative Practice | A150 | | Tue 4 | Only Intensive Japanese Language Course Students Express |
| Hiragana/Katakana | H150 | | Oct. 11 – Oct. 15 | |
| Beginning Japanese Kanji/Vocabulary | K101 | a | Wed 3・Fri 3 | For students who have Kanji background |
| | | b | Mon 3・Thu 3 | |
| | K102 | | Mon 3・Thu 3 | |
| | K151 | | Mon 3・Thu 3 | |
| E-learning | E000 | | Thu 4 | |

Timetable① Course code Class Instructor (Classroom)

| | 1 8:50-10:20 | 2 10:30-12:00 | 3 13:00-14:30 | 4 14:40-16:10 | 5 16:20-17:50 |
|-------------|---|------------------|---|---|------------------|
| M o n | C150 Ms. Mikoda (R115) | | K151 Ms. Seki (C403) | C100c Ms. Otomo (A405) | |
| | C110a Ms. Backley (C307) b Ms. Mishima (C401) c Ms. Usui (C402) | | K101b Ms. Otomo (C401) K102 Ms. Mishima (C402) | | |
| | | | | | |
| T u e | C150 Ms. S. Takahashi(R115) | | R150 Ms. Hayashi (R115) | A150 Ms. Hayashi (R115) | |
| | C100b Ms. Murakami (C401) | | | C100a Ms. Abe (C105) M100 Ms. Uchiyama (C106) | |
| W e d | C120 Ms. Moriwaki (C403) | | K101a Ms. Y. Sato (C301) | C100c Ms. Miu Takahashi (A402) | |
| | I120 Ms. Usui (C408) | | | | |
| | B170 Ms. Backley (C401) | | | | |
| T h u | C150 Ms. Ono (R115) | | K151 Mr. Sugawara (C403) | C100a Ms. S. Takahashi (A101) | |
| | C110a Ms. Kashiwagi (C401) b Ms. Azumi (C402) c Mr. Sugawara (C403) | | K101b Mr. Choi (C401) K102 Ms. Y. Sato (C402) | M100 Ms. Otomo (A205) E000 Ms. Oshitani (M305) | |
| | | | | | |
| F r i | C150 Ms. Yamaguchi (R115) | | R150 Ms. Usui (R115) | | |
| | C100b Ms. Uchiyama (C401) | | K101a Ms. Backley (C401) | | |
| | C120 Ms. Mikoda (C402) | | | | |
| | I120 Ms. Backley (C408) | | | | |

Timetable②: H150

3days intensive course to master Hiragana and Katakana

| | 1 8:50-10:20 | 2 10:30-12:00 | 3 13:00-14:30 |
|---------------|-----------------|------------------|------------------|
| Oct. 11 (Thu) | Ms. Ono | | Mr. Sugawara |
| Oct. 12 (Fri) | Ms. Yamaguchi | | Ms. Usui |
| Oct. 15 (Mon) | Ms. Mikoda | | Ms. Seki |

*classroom R115

※ The classrooms which are titled with “R” are located in International Exchange Building (A12 in the Kawauchi Campus Map).

Level 2(Basic)

| Course | JLP course code | Class | The course schedule | Notes |
|---|-----------------|-------|------------------------------------|---|
| Basic Comprehensive Japanese | C210 | a | Mon 1-2・Thu 1-2 | a and b will provide the same contents. (same below) |
| | | b | Mon 1-2・Thu 1-2 | |
| | C220 | a | Wed 1-2・Fri 1-2 | |
| | | b | Wed 1-2・Fri 1-2 | |
| | C250 | a | Mon 1-2・Tue 1-2 Thu 1-2・Fri 1-2 | Express |
| | | b | Mon 1-2・Tue 1-2 Thu 1-2・Fri 1-2 | Only Intensive Japanese Language Course Students |
| Basic Japanese for Business Communication | B270 | | Wed 1-2 | |
| Basic Japanese Reading Comprehension | R250 | | Tue 3・Fri 3 | Only Intensive Japanese Language Course Students |
| Basic Japanese Applicative Practice | A250 | a | Tue 4 | Express |
| | | b | Tue 4 | Only Intensive Japanese Language Course Students |
| Basic Japanese Kanji/Vocabulary | K201 | | Tue 3・Thu 3 | |
| | K202 | | Tue 3・Fri 3 | For students who have Kanji background |
| | K250 | | Mon 3・Tue 3 Thu 3・Fri 3 | Express |
| E-learning | E000 | | Thu 4 | |
| Co-learning Seminar: Japanese literature in English & Japanese | ML000 | | Thu 4 | Course Code: CB44207 |

Timetable

| | 1 8:50-10:20 | 2 10:30-12:00 | 3 13:00-14:30 | 4 14:40-16:10 | 5 16:20-17:50 |
|-----|--|--------------------------|--|------------------|------------------|
| Mon | C250a Ms. Yokosawa (R107) b Ms. Mikoda (R115) | K250 Ms. Yokosawa (R107) | | | |
| | C210a Ms. Uchiyama (C403) b Ms. Yamaguchi (C404) | | | | |
| Tue | C250a Ms. Yokosawa (R107) b Ms. S. Takahashi (R115) | R250 Ms. Hayashi (R115) | A250a Ms. Otomo (R107) b Ms. Hayashi (R115) | | |
| | | K250 Ms. Yokosawa (R107) | | | |
| | | K201 Ms. Otomo (C402) | | | |
| | | K202 Ms. Y. Sato (C403) | | | |
| Wed | C220a Ms. Kashiwagi (C404) b Ms. Ono (C405) | | | | |
| | B270 Ms. Suzuki (C402) | | | | |
| Thu | C250a Ms. Tachibana (R107) b Ms. Ono (R115) | K250 Ms. Saito (R107) | E000 Ms. Oshitani (M305) | | |
| | C210a Ms. Murakami (C404) b Ms. Suzuki (C405) | K201 Ms. Azumi (C404) | | | |
| Fri | C250a Ms. Moriwaki (R107) b Ms. Yamaguchi (R115) | R250 Ms. Usui (R115) | | | |
| | | K250 Ms. Moriwaki (R107) | | | |
| | C220a Ms. Azumi (C403) b Ms. Miu Takahashi (C404) | K202 Ms. Azumi (C402) | | | |

※ The classrooms which are titled with "R" are located in International Exchange Building (A12 in the Kawauchi Campus Map).

※ : Co-learning Seminar(p.8)

Level 3 (Pre- Intermediate)

| Course | JLP course code | The course schedule | Notes |
|---|-----------------|----------------------------|-------------------------------------|
| Pre-Intermediate Comprehensive Japanese | C320 | Wed 1-2•Fri 1-2 | |
| Pre-Intermediate Japanese Grammar | G350 | Mon 1•Thu 1 | Express |
| Pre-Intermediate Japanese Grammar/Reading | G/R310 | Thu 1 | You must simultaneously take G/W310 |
| Pre-Intermediate Japanese Grammar/Writing | G/W310 | Thu 2 | You must simultaneously take G/R310 |
| Pre-Intermediate Japanese Listening Comprehension | L300 | Mon 5 | |
| | L310 | Mon 1 | You must simultaneously take S310 |
| Pre-Intermediate Japanese Speaking/Conversation | S300 | Mon 3 | |
| | S310 | Mon 2 | You must simultaneously take L310 |
| | S350 | Tue 1•Fri 1 | Express |
| Pre-Intermediate Japanese Reading Comprehension | R300 | Tue 2 | |
| | R350 | Mon 2•Thu 2 | Express |
| Pre-Intermediate Japanese Writing/Composition | W300 | Thu 3 | |
| Pre-Intermediate Japanese Practice | P350 | Tue 2•Fri 2 | Express |
| Pre-Intermediate Japanese Applicative Practice | A350 | Tue 4 | Express |
| Pre-Intermediate Japanese Kanji/Vocabulary | K300 | Tue 3•Fri 3 | |
| | K350 | Mon 3•Tue 3 Thu 3•Fri 3 | Express |
| E-learning | E000 | Thu 4 | |
| Co-learning Seminar: Japanese literature in English & Japanese | ML000 | Thu 4 | Course Code: CB44207 |

Timetable

| | 1 8:50-10:20 | 2 10:30-12:00 | 3 13:00-14:30 | 4 14:40-16:10 | 5 16:20-17:50 |
|-----|------------------------------|------------------------------|---------------------------|---------------------------|----------------------|
| Mon | G350 Ms. Yokosawa (R107) | R350 Ms. Yokosawa (R107) | K350 Ms. Yokosawa (R107) | | L300 Mr. Choi (A303) |
| | L310 Ms. S. Takahashi (C405) | S310 Ms. S. Takahashi (C405) | S300 Mr. Sugawara (C404) | | |
| Tue | S350 Ms. Yokosawa (R107) | P350 Ms. Yokosawa (R107) | K350 Ms. Yokosawa (R107) | A350 Ms. Otomo (R107) | |
| | | R300 Mr. Uehara (C403) | K300 Ms. Abe (C404) | | |
| Wed | C320 Ms. Azumi (C406) | | | | |
| Thu | G350 Ms. Tachibana (R107) | R350 Ms. Tachibana (R107) | K350 Ms. Saito (R107) | E000 Ms. Oshitani (M305) | |
| | G/R310 Ms. Yamaguchi (C406) | G/W310 Ms. Yamaguchi (C406) | W300 Ms. Yamaguchi (C406) | ML000 Ms. Mushiake (A105) | |
| Fri | S350 Ms. Moriwaki (R107) | P350 Ms. Moriwaki (R107) | K350 Ms. Moriwaki (R107) | | |
| | C320 Ms. Usui (C405) | | K300 Ms. Endo (C403) | | |

※The classrooms which are titled with “R” are located in International Exchange Building (A12 in the Kawauchi Campus Map).

※ : Co-learning Seminar(p.8)

Level 4 (Intermediate)

| Course | JLP course code | The course schedule | Notes |
|--|-----------------|---------------------|--|
| Intermediate Comprehensive Japanese | C440 | Wed 1-2・Fri 1-2 | |
| Intermediate Japanese Grammar/Reading | G/R410 | Thu 1 | You must simultaneously take G/W410 |
| Intermediate Japanese Grammar/Writing | G/W410 | Thu 2 | You must simultaneously take G/R410 |
| Intermediate Japanese Listening Comprehension | L400 | Mon 2 | |
| | L410 | Mon 1 | You must simultaneously take S410 |
| Intermediate Japanese Speaking/Conversation | S400 | Tue 2 | |
| | S410 | Mon 2 | You must simultaneously take L410 |
| Intermediate Japanese Reading Comprehension | R400 | Tue 1 | |
| Intermediate Japanese Writing/Composition | W400 | Tue 1 | |
| Intermediate Japanese Kanji/Vocabulary | K400 | Tue 3・Fri 4 | |
| Intermediate Japanese for JLPT N2 | N480 | Thu 3 | |
| Intermediate Co-learning Seminar: Intercultural Understanding | IU430 | Mon 3 | Course Code: CB13208 |
| Intermediate Co-learning Seminar: Multimedia based Japanese Learning | MM430 | Thu 3 | Course Code: CB43227 |
| Intermediate Co-learning Seminar: Seeing Home Country and Area from Japan | SC430 | Fri 3 | Course Code: CB54208 |
| Intermediate Co-learning Seminar: Understanding Japanese Society and Culture | UJ430 | Wed 4 | Course Code: CB34210 |
| Intermediate Co-learning Seminar: Solve regional problems in Miyagi through tourism business | PB480 | Ref. P.16 | Course Code: CB33237 October 1 Guidance |
| Intermediate Research Seminar | RS430 | Wed 3 | Only DEEP-BridgeU students |
| E-learning | E000 | Thu 4 | |
| Co-learning Seminar: Japanese literature in English & Japanese | ML000 | Thu 4 | Course Code: CB44207 |

Timetable

| | 1 8:50-10:20 | 2 10:30-12:00 | 3 13:00-14:30 | 4 14:40-16:10 | 5 16:20-17:50 |
|-----|--|--|---|---|---|
| Mon | L410 Mr. Sugawara (C406) | S410 Mr. Sugawara (C406) L400 Ms. Sawabe (C407) | IU430 Ms. Watanabe (C101) | | PB480 Ms. Watanabe (First class only 10/1 A102) |
| Tue | R400 Mr. Uehara (C402) W400 Ms. A. Takahashi (M303) | S400 Mr. Nakamura (C402) | K400 Ms. Endo (C405) | | |
| Wed | C440 Mr. Soejima (C407) | | RS430 Mr. Uehara (C304) | UJ430 Ms. Shimasaki (C301) | |
| Thu | G/R410 Ms. Uchiyama (C407) | G/W410 Ms. Uchiyama (C407) | N480 Ms. Shimasaki (C307) MM430 Ms. Hayashi (A303) | E000 Ms. Oshitani (M305) ML000 Ms. Mushiaki (A105) | |
| Fri | C440 Ms. Mishima (C406) | | SC430 Ms. Mishima (C307) | K400 Ms. Uchiyama (C402) | |

※ : Co-learning Seminar(p.8)

Level 5 (Upper-Intermediate)

| Course | JLP course code | Class | The course schedule | Notes |
|--|-----------------|-------|---------------------|---|
| Upper-Intermediate Comprehensive Japanese | C560 | | Fri 1-2 | |
| Upper-Intermediate Japanese Listening Comprehension | L590 | | Thu 2 | General Education : Japanese B-1, B-2 Code : CB42203, CB42204 |
| Upper-Intermediate Japanese Speaking/Conversation | S500 | | Mon 4 | |
| Upper-Intermediate Japanese Reading Comprehension | R500 | | Thu 4 | |
| Upper-Intermediate Japanese Writing/Composition | W500 | | Tue 3 | |
| Upper-Intermediate Japanese Applicative Practice | A560 | | Tue 3 | Only Japan-Korea students |
| Upper-Intermediate Japanese Kanji/Vocabulary | K500 | a | Wed 4 | a and b will provide the same contents. |
| | | b | Thu 4 | |
| Upper-Intermediate Japanese for JLPT N1 | N580 | | Wed 3 | |
| Upper-Intermediate Co-learning Seminar: Collaborative Project | CP530 | | Wed 2 | Course Code : CB32243 |
| Upper-Intermediate Co-learning Seminar: Thinking about Japanese Culture | JC530 | | Mon 3 | Course Code : CB13207 |
| Upper-Intermediate Co-learning Seminar: Japanese Language and Culture in Movies | JM500 | | Tue 4 | Course Code : CB24248 |
| Upper-Intermediate Co-learning Seminar: Japanese Language and Culture in Songs | JS500 | | Tue 5 | Course Code : CB25226 |
| Upper-Intermediate Co-learning Seminar: Language Varieties in Japanese | LV500 | | Tue 1 | Course Code : CB31227 |
| Upper-Intermediate Co-learning Seminar: Living in Multicultural Japanese Society | MC500 | | Thu 3 | Course Code : CB43228 |
| Upper-Intermediate Co-learning Seminar: Playback Theater Workshop : advanced | PW500 | | Mon 3 | Course Code : CB13206 |
| Upper-Intermediate Co-learning Seminar: Japanese Traditional Culture | TC530 | | Mon 2 | Course Code : CB32279 |
| Upper-Intermediate Japanese Culture Seminar: An introduction to Classical Japanese Writings | CJ500 | | Mon 4 | |
| Upper-Intermediate Japanese Culture Seminar: An Introduction to Sino-Japanese Writings | SW500 | | Tue 5 | |
| Upper-Intermediate Japanese Culture Seminar: An Introduction to Early Modern Handwritten Sources | HS500 | | Wed 5 | |
| Upper-Intermediate Research Seminar | RS530 | | Wed 3 | Only DEEP-BridgeU students |
| E-learning | E000 | | Thu 4 | |
| Co-learning Seminar: Japanese literature in English & Japanese | ML000 | | Thu 4 | Course Code : CB44207 |

Timetable

| | 1: 8:50-10:20 | 2: 10:30-12:00 | 3: 13:00-14:30 | 4: 14:40-16:10 | 5: 16:20-17:50 |
|-----|--------------------------|---------------------------------|---|---|---|
| Mon | | TC530 Mr. Umeki (A406) | PW500 Ms. Mushiake (C303) JC530 Ms. S. Sato (A307) | S500 Ms. Usui (C402) CJ500 Ms. S. Sato (C401) | |
| Tue | LV500 Mr. Soejima (A304) | | W500 Ms. S. Sato (C406) A560 Mr. Nakamura (C401) | JM500 Mr. Nakamura (C104) | JS500 Mr. Uehara (A307) SW500 Mr. Klautau (C206) |
| Wed | | CP530 Ms. Mino Takahashi (A402) | N580 Ms. Shimasaki (C401) RS530 Mr. Soejima (C407) | K500a Ms. Hayashi (A403) | HS500 Mr. Aratake (A403) |
| Thu | | L590 Mr. Yoshimoto (M304) | MC500 Ms. Oshitani (A402) | R500 Mr. Ichinose (C401) K500b Ms. Hayashi (B103) E000 Ms. Oshitani (M305) ML000 Ms. Mushiake (A105) | |
| Fri | C560 Mr. Sugawara (C407) | | | | |

※ : Co-learning Seminar (p.8)

Level 6 (Advanced)

| Course | JLP course code | Class | The course schedule | Notes |
|---|-----------------|-------|---------------------|--|
| Advanced Japanese Listening Comprehension | L690 | | Tue 2 | General Education: Japanese F-1, F-2 Code: CB22205, CB22206 |
| Advanced Japanese Speaking/Conversation | S690 | | Thu 4 | General Education: Japanese D-1, D-2 Code: CB44203, CB44204 |
| Advanced Japanese Reading Comprehension | R690 | | Tue 3 | General Education: Japanese J-1, J-2 Code: CB23204, CB23205 |
| Advanced Japanese Writing/Composition | W690 | | Thu 3 | General Education: Japanese H-1, H-2 Code: CB43205, CB43206 |
| Advanced Business Japanese | BJ680 | a | Wed 3 | a and b will provide the same contents. (same below) |
| | | b | Thu 6 | |
| Advanced Co-learning Seminar: Global Communication | GC680 | a | Tue 1 | Course Code: CB21206 |
| | | b | Tue 3 | Course Code: CB23245 |
| Advanced Co-learning Seminar: Intercultural Communication Studies: Basics | IC600 | | Mon 5 | Course Code: CB15205 |
| Advanced Co-learning Seminar: Buddhism and Japan | JB600 | | Mon 2 | Course Code: CB12238 |
| Advanced Co-learning Seminar: Intellectual History of Modern Japan | MH600 | | Thu 2 | Course Code: CB42215 |
| Advanced Co-learning Seminar: Writing an Argument | WA600 | | Tue 4 | Course Code: CB24251 |
| Advanced Japanese Culture Seminar: Pre-modern History and Thoughts in Japan | PH600 | | Thu 5 | |
| Advanced Research Seminar | RS630 | | Wed 3 | Only DEEp-BridgeU students |
| E-learning | E000 | | Thu 4 | |
| Co-learning Seminar: Japanese literature in English & Japanese | ML000 | | Thu 4 | Course Code: CB44207 |

Timetable

| | 1 8:50-10:20 | 2 10:30-12:00 | 3 13:00-14:30 | 4 14:40-16:10 | 5 16:20-17:50 | 6 18:00-19:30 |
|-----|----------------------------|---------------------------|--|--|---------------------------|--------------------------|
| Mon | | JB600 Mr. Klautau (C102) | | | IC600 Ms. Yamamoto (A403) | |
| Tue | GC680a Ms. Yamamoto (A303) | L690 Ms. Sugaya (C303) | GC680b Ms. Yamamoto (A303) R690 Ms. Sugaya (C303) | WA600 Mr. Kushimoto (C303) | | |
| Wed | | | RS630 Ms. Hayashi (C305) BJ680a Ms. Suzuki (A301) | | | |
| Thu | | MH600 Mr. Morikawa (A307) | W690 Mr. Yoshimoto (A305) | S690 Mr. Yoshimoto (A305) E000 Ms. Oshitani (M305) ML000 Ms. Mushiake (A105) | PH600 Mr. Sonehara (B101) | BJ680b Ms. Suzuki (A301) |
| Fri | | | | | | |

※ : Co-learning Seminar (p.8)

8. Class Schedule by level

Level 1

| | Oct. | Nov. | Dec. | Jan. | Feb. |
|-------|-------|-------|-------|------|------|
| C100a | 10/9 | | | 1/22 | |
| C100b | 10/9 | | | 1/25 | |
| C100c | 10/10 | | | | 1/28 |
| C110a | 10/4 | | | | 1/28 |
| C110b | 10/4 | | | | 1/28 |
| C110c | 10/4 | | | | 1/28 |
| C120 | 10/5 | | | 1/16 | |
| C150 | 10/16 | | 12/3 | | |
| I120 | 10/5 | | | 1/16 | |
| B170 | 10/3 | | | 1/16 | |
| M100 | | 11/29 | | 1/24 | |
| R150 | 10/16 | | 12/4 | | |
| A150 | 10/16 | | 11/27 | | |
| H150 | 10/11 | 10/15 | | | |
| K101a | 10/12 | | | 1/25 | |
| K101b | 10/11 | | | | 1/28 |
| K102 | 10/11 | | | | 1/28 |
| K151 | 10/18 | | | | 1/31 |
| E000 | 10/4 | | | 1/17 | |

Level 2

| | Oct. | Nov. | Dec. | Jan. | Feb. |
|-------|-------|------|-------|------|------|
| C210a | 10/4 | | | | 1/28 |
| C210b | 10/4 | | | | 1/28 |
| C220a | 10/5 | | | 1/16 | |
| C220b | 10/5 | | | 1/16 | |
| C250a | 10/11 | | 11/26 | | |
| C250b | | | 12/4 | | 1/30 |
| B270 | 10/3 | | | 1/16 | |
| R250 | | | 12/7 | | 2/1 |
| A250a | 10/16 | | 11/27 | | |
| A250b | | | 12/4 | | 1/22 |
| K201 | 10/11 | | | 1/22 | |
| K202 | 10/9 | | | 1/22 | |
| K250 | 10/11 | | 11/27 | | |
| E000 | 10/4 | | | 1/17 | |
| ML000 | 10/11 | | | | 1/31 |

Level 3

| | Oct. | Nov. | Dec. | Jan. | Feb. |
|--------|-------|-------|------|------|------|
| C320 | 10/5 | | | | 1/29 |
| G350 | | 11/29 | | | 1/28 |
| G/R310 | 10/11 | | | | 1/24 |
| G/W310 | 10/11 | | | | 1/24 |
| L300 | 10/15 | | | | 1/30 |
| L310 | 10/15 | | | | 2/4 |
| S300 | 10/15 | | | | 1/30 |
| S310 | 10/15 | | | | 2/4 |
| S350 | | 11/27 | | 1/15 | |
| R300 | 10/16 | | | | 1/22 |
| R350 | | 11/29 | | | 1/28 |
| W300 | 10/11 | | | | 1/24 |
| P350 | | 11/27 | | 1/15 | |
| A350 | | | 12/4 | | 1/22 |
| K300 | 10/16 | | | | 1/29 |
| K350 | | 11/29 | | | 1/25 |
| E000 | 10/4 | | | 1/17 | |
| ML000 | 10/11 | | | | 1/31 |

Level 4

| | Oct. | Nov. | Dec. | Jan. | Feb. |
|--------|-------|-------|-------|------|-----------|
| C440 | 10/5 | | | | 1/25 |
| G/R410 | 10/11 | | | | 1/24 |
| G/W410 | 10/11 | | | | 1/24 |
| L400 | 10/15 | | | | 1/30 |
| L410 | 10/15 | | | | 2/4 |
| S400 | 10/16 | | | | 1/22 |
| S410 | 10/15 | | | | 2/4 |
| R400 | 10/16 | | | | 1/22 |
| W400 | 10/9 | | | | 1/22 |
| K400 | 10/12 | | | | 1/25 |
| N480 | 10/4 | | | | 1/24 |
| IU430 | 10/1 | | | | 1/30 |
| MM430 | 10/4 | | | | 1/24 |
| SC430 | 10/5 | | | | 2/1 |
| UJ430 | 10/3 | | | 1/16 | |
| PB480 | 10/1 | 10/13 | 11/10 | 12/8 | 1/12 1/26 |
| RS430 | 10/3 | | | 1/9 | |
| E000 | 10/4 | | | 1/17 | |
| ML000 | 10/11 | | | | 1/31 |

Level 5

| | Oct. | Nov. | Dec. | Jan. | Feb. |
|-------|-------|-------|------|------|------|
| C560 | 10/12 | | | | 1/29 |
| L590 | 10/4 | | | | 1/31 |
| S500 | 10/15 | | | | 1/30 |
| R500 | 10/11 | | | | 1/24 |
| W500 | 10/9 | | | | 1/15 |
| A560 | 10/16 | | | | 1/22 |
| K500a | 10/17 | | | | 1/23 |
| K500b | 10/18 | | | | 1/31 |
| N580 | 10/3 | | | | 1/16 |
| CP530 | 10/3 | | | | 1/16 |
| JC530 | 10/1 | | | | 1/30 |
| JM500 | 10/2 | | | | 1/15 |
| JS500 | 10/2 | | | | 1/15 |
| LV500 | 10/2 | | | | 1/15 |
| MC500 | 10/4 | | | | 1/24 |
| PW500 | 10/1 | | | | 1/30 |
| TC530 | 10/1 | | | | 1/30 |
| CJ500 | 10/1 | | | | 1/30 |
| SW500 | | 11/27 | | | 1/22 |
| HS500 | | 11/28 | | | 1/23 |
| RS530 | 10/3 | | | | 1/16 |
| E000 | 10/4 | | | | 1/17 |
| ML000 | 10/11 | | | | 1/31 |

Level 6

| | Oct. | Nov. | Dec. | Jan. | Feb. |
|--------|-------|------|------|------|------|
| L690 | 10/2 | | | | 1/22 |
| S690 | 10/4 | | | | 1/31 |
| R690 | 10/2 | | | | 1/22 |
| W690 | 10/4 | | | | 1/31 |
| BJ680a | 10/3 | | | | 1/16 |
| BJ680b | 10/4 | | | | 1/24 |
| GC680a | 10/2 | | | | 1/15 |
| GC680b | 10/2 | | | | 1/15 |
| IC600 | 10/1 | | | | 1/30 |
| JB600 | 10/1 | | | | 1/30 |
| MH600 | 10/4 | | | | 1/24 |
| WA600 | 10/2 | | | | 1/15 |
| PH600 | 10/4 | | | | 1/17 |
| RS630 | 10/3 | | | | 1/9 |
| E000 | 10/4 | | | | 1/17 |
| ML000 | 10/11 | | | | 1/31 |

9. E-learning Program

E-learning is a form of study using the Internet. It enables you to study Japanese using Japanese language learning programs and tools on the Web.

1. URLs for Japanese E-learning programs can be found below.

<http://nihongo-e-na.com/eng/>

<http://nihongo-e-na.com/jpn/>

2. ALC NetAcademy Japanese Course 2

This is an E-learning program used at Tohoku University. Using this program requires a Tohoku University student number and password. If you don't have an ID and password, please inquire at your department's Academic Affairs Section or General Affairs Section. It will take about one week to obtain them.

| | |
|--------------|---|
| Levels | Basic through Intermediate |
| Course Type | Characters (1 unit), Reading (30 units), Listening (30 units), Vocabulary (300 units), Mini-Test (12 units) |
| Instructions | On campus: log in to https://netacademy.cite.tohoku.ac.jp/onet2/ (use your student ID number and password) Off campus: requires SRP authentication (attend the guidance session if you don't know how to do this) |

3. E-learning Program Guidance

Guidance sessions for the E-learning program will be held as follows. At these sessions, we will explain how to use various programs, with an emphasis on ALC NetAcademy.

October 4 (Thu.): 14:40 -16:10 M305 (Multimedia Education and Research Complex)

October 11 (Thu.): 14:40 -16:10 M305 (Multimedia Education and Research Complex)

10. Contact Information

Inquiries about Japanese Classes

If you don't know which classes to register, or have problems with your classes, please ask your program coordinator. Please send an inquiry by email first. If you need to meet in person, please make an appointment by email.

| Program Name | Coordinator (upper row : main coordinator in charge) | Department/Email Address |
|--|---|---|
| JYPE COLABS | Professor Sekiko SATO | Kawauchi Kita Campus, Kawakita Joint Building 518 Email: sekiko.sato.e8*tohoku.ac.jp |
| | Associate Professor Kensaku SOEJIMA | Kawauchi Kita Campus, Kawakita Joint Building 517 Email: kensaku * tohoku.ac.jp |
| IPLA | Professor Satoshi UEHARA | Kawauchi Kita Campus, Kawakita Joint Building 520 Email: uehara * he.tohoku.ac.jp |
| | Senior Assistant Professor Masako HAYASHI | Kawauchi Kita Campus, Kawakita Joint Building 519 Email: masako * tohoku.ac.jp |
| DEEP-Bridge | Professor Satoshi UEHARA | Kawauchi Kita Campus, Kawakita Joint Building 520 Email: uehara * he.tohoku.ac.jp |
| | Senior Assistant Professor Masako HAYASHI | Kawauchi Kita Campus, Kawakita Joint Building 519 Email: masako * tohoku.ac.jp |
| Intensive Japanese Language Program | Senior Assistant Professor Masako HAYASHI | Kawauchi Kita Campus, Kawakita Joint Building 519 Email: masako * tohoku.ac.jp |
| | Professor Satoshi UEHARA | Kawauchi Kita Campus, Kawakita Joint Building 520 Email: uehara * he.tohoku.ac.jp |
| Japan-Korea Program | Associate Professor Wataru NAKAMURA | Kawauchi Kita Campus, Kawakita Joint Building 523 email: jlptohoku*gmail.com |
| | Professor Sekiko SATO | Kawauchi Kita Campus, Kawakita Joint Building 518 Email: sekiko.sato.e8*tohoku.ac.jp |
| Miscellaneous | Associate Professor Kensaku SOEJIMA | Kawauchi Kita Campus, Kawakita Joint Building 517 Email: kensaku * tohoku.ac.jp |
| | Professor Satoshi UEHARA | Kawauchi Kita Campus, Kawakita Joint Building 520 Email: uehara * he.tohoku.ac.jp |

※ The location of the Kawakita Joint Building is shown on A07 in the Kawauchi Campus Map.

※ Replace * with @ in email addresses.

Inquiries about Official Procedures

(Class Registration, Issuance of Academic Reports (Rishuu Shoumeisho) etc.)

Student Exchange Division, International Education Section

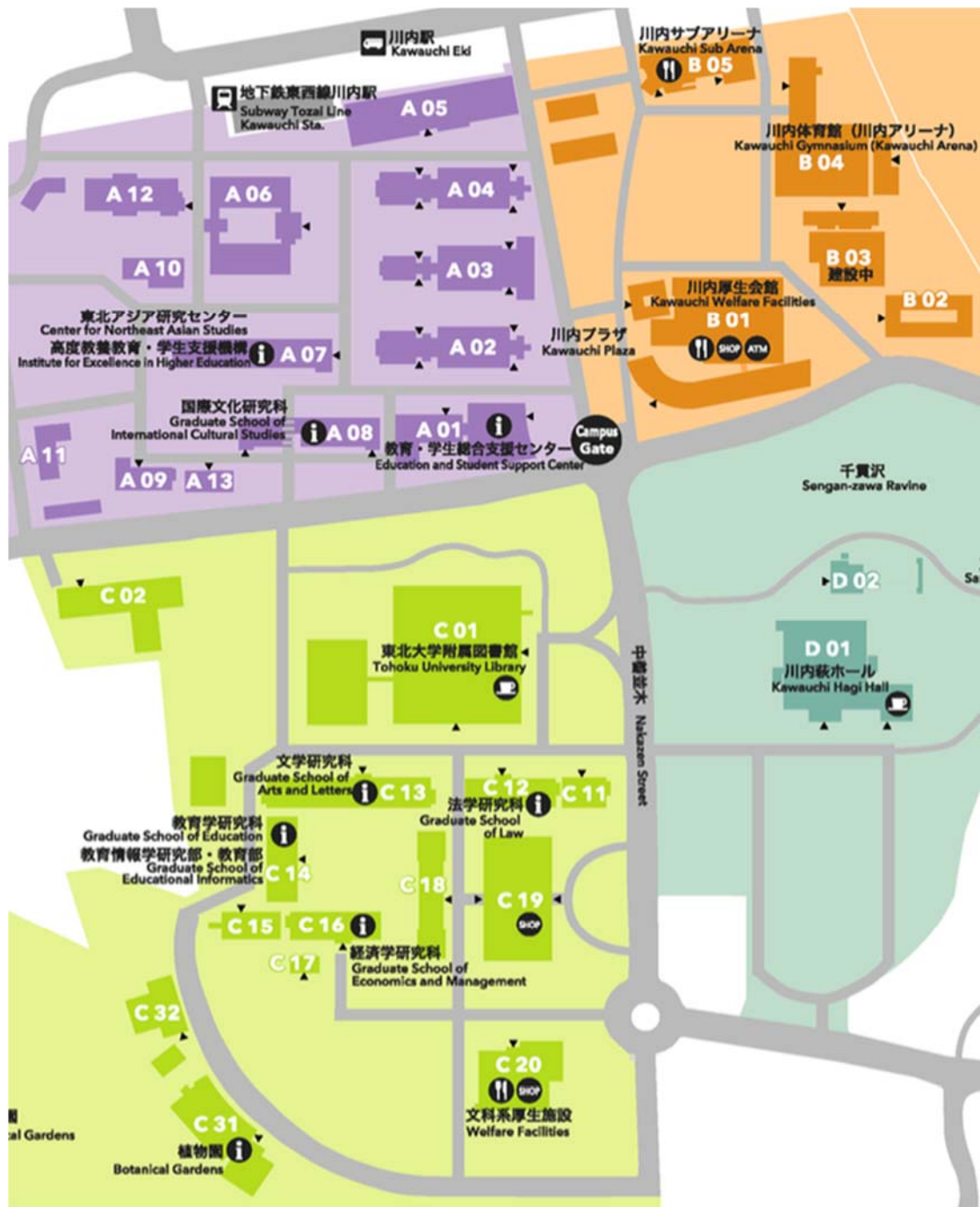
Kawauchi Kita Campus Education and Student Support Center, 2F (see A01 in the Kawauchi Campus Map)

Phone: 022-795-7817

Email: sed2*grp.tohoku.ac.jp

Replace * with @ in email addresses.

11. Kawauchi Campus Map



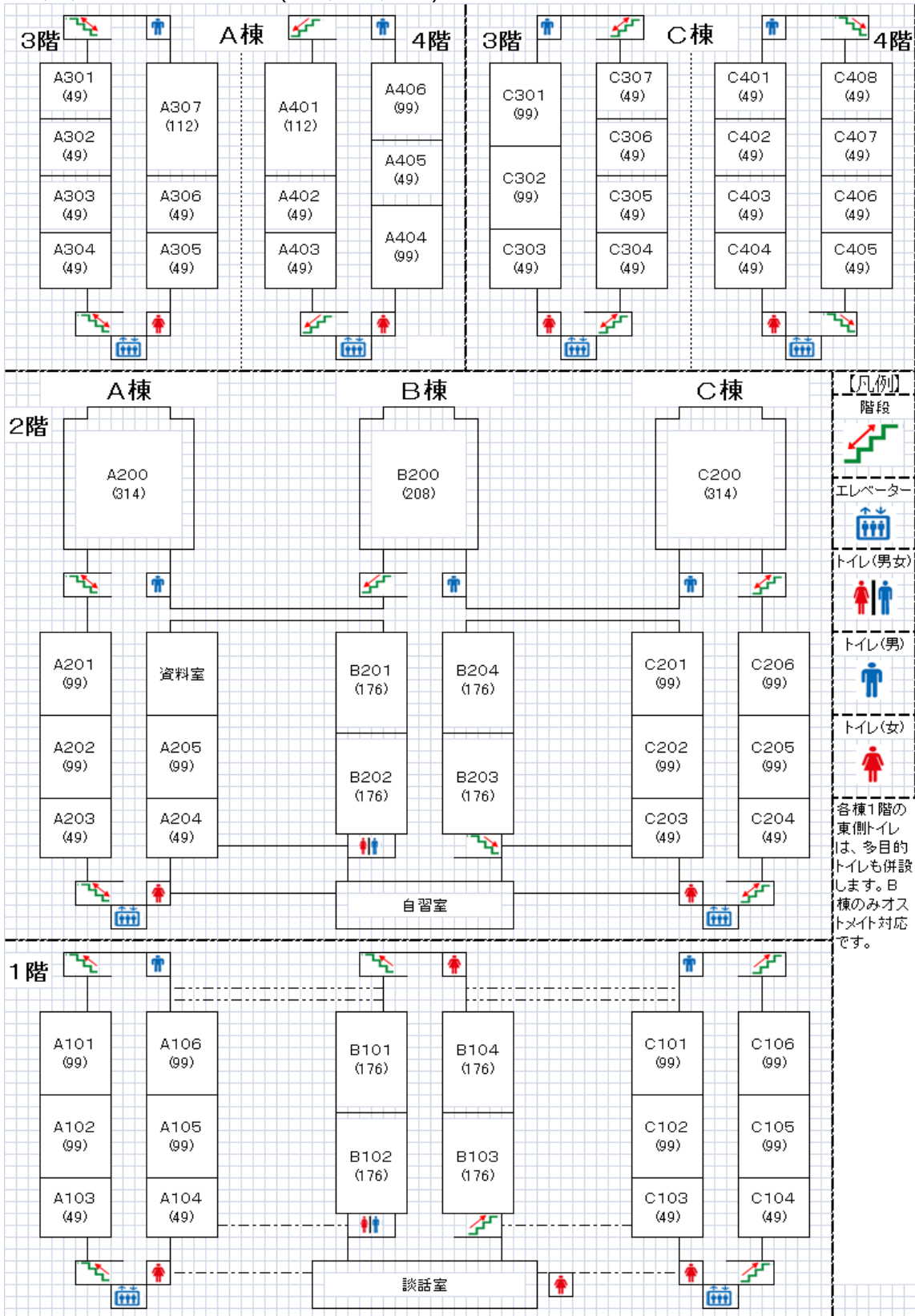
- A 01** 教育・学生総合支援センター
Education and Student Support Center
- A 02** 講義棟A棟
Lecture Rooms A
- A 03** 講義棟B棟
Lecture Rooms B
- A 04** 講義棟C棟
Lecture Rooms C
- A 05** マルチメディア教育研究棟 (教育情報基盤センター)
Multimedia Education and Research Center (Center for Information Technology in Education)
- A 06** 学生実験棟
Student Laboratories
- A 07** 川北合同研究棟
Kawauchi Research Forum
(高度教養教育・学生支援機構/東北アジア研究センター)
(Institute for Excellence in Higher Education / Center for Northeast Asian Studies)
- A 08** 国際文化研究棟
Graduate School of International Cultural Studies
- A 09** 保健管理センター
Student Health Care Center
- A 10** 教育研究基盤支援棟 4
Education and Research Base Support Building 4
- A 11** 教育研究基盤支援棟 5
Education and Research Base Support Building 5
- A 12** 国際交流棟
International Exchange Building
- A 13** 学生相談所
University Counseling Center

- B 01** 川内厚生会館
Kawauchi Welfare Facilities
- B 02** 川内サークル部室棟
Kawauchi Circle and Club Building
- B 03** 川内課外活動共用施設 (川内ホール)
Kawauchi Extracurricular Activity Shared Facilities (Kawauchi Hall)
- B 04** 川内体育館 (川内アリーナ)
Kawauchi Gymnasium (Kawauchi Arena)
- B 05** 川内サブアリーナ
Kawauchi Sub Arena

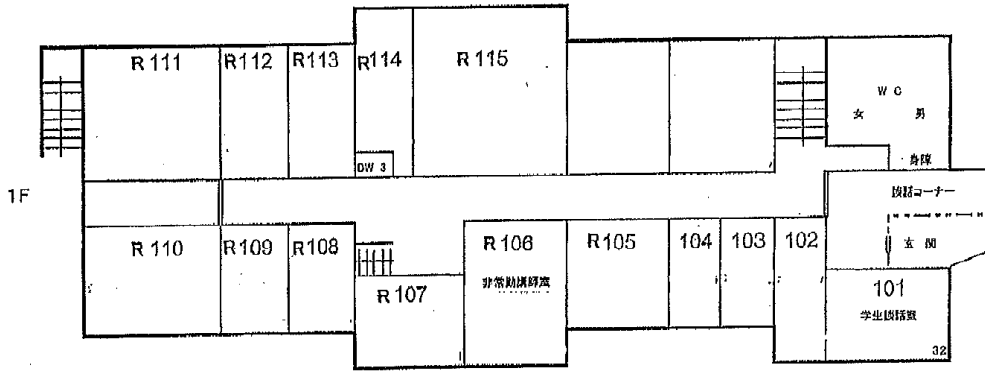
- C 01** 東北大学附属図書館
Tohoku University Library
- C 02** 入試センター
Admission Center
- C 11** 文・法合同研究棟
Arts and Letters / Law Joint Building
- C 12** 法学研究科棟
Graduate School of Law
- C 13** 文学研究科棟
Graduate School of Arts and Letters
- C 14** 文科系総合研究棟 (教育学研究科)
New Humanities Building (Graduate School of Education)
- C 15** 文科系合同研究棟
Humanities Building
- C 16** 経済学研究科棟
Graduate School of Economics and Management
- C 17** 経済学研究科演習室
Seminar Rooms
- C 18** 中講義棟
Lecture Rooms
- C 19** 文科系総合講義棟
Lecture Rooms
- C 20** 文科系厚生施設 (メイプルパーク川内)
Welfare Facilities (Maple Park Kawauchi)

12. Classroom Locations

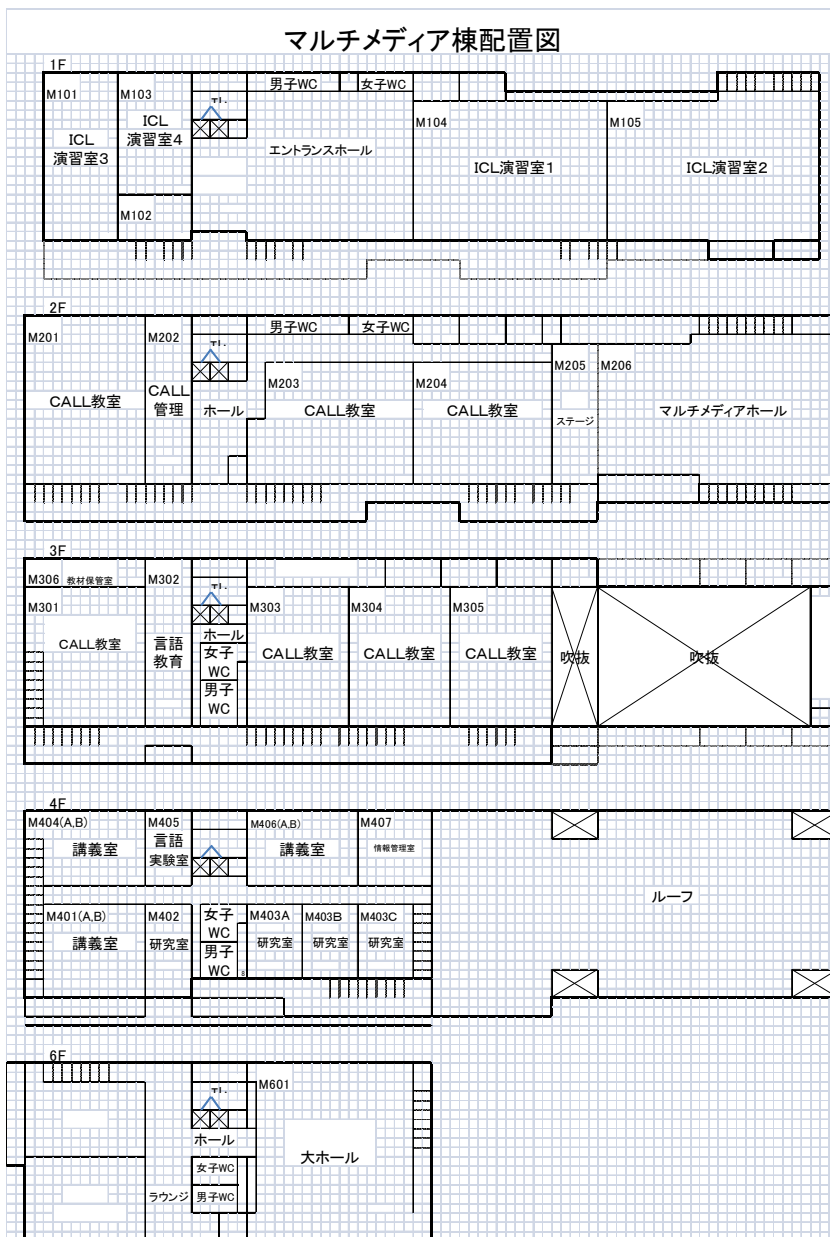
A, B, and C Classrooms (A02, A03, A04)



International Exchange Building (A12)



Multimedia Education and Research Complex (A05)



Student

→

Class Instructor

Class Registration Card (Submit to Class Instructor)

| | | | | | |
|-------------------|--|-------------------------------------|------------|--------|-------------|
| Name | In English Alphabet: Family name First name Middle name | In Kanji: Family name First name | J18B□□□□ | | |
| Enrollment Status | <input type="checkbox"/> Undergraduate <input type="checkbox"/> Graduate (□MA□Doctoral) <input type="checkbox"/> Undergrad. Research Student <input type="checkbox"/> Grad. Research Student <input type="checkbox"/> Research Institute Research Student <input type="checkbox"/> Exchange Student (□JYPE/□COLABS/□IPLA/□DEEP □DEEp-BridgeU /□DEEp-BridgeG/□Other _____) <input type="checkbox"/> Other _____ | Japanese Level (Kanji Level) | | | |
| | | Department | | | |
| | | Academic Advisor's Name | | | |
| Subject | | Day | M T W Th F | Period | 1 2 3 4 5 6 |

Class Registration Card (Submit to Class Instructor)

| | | | | | |
|-------------------|--|-------------------------------------|------------|--------|-------------|
| Name | In English Alphabet: Family name First name Middle name | In Kanji: Family name First name | J18B□□□□ | | |
| Enrollment Status | <input type="checkbox"/> Undergraduate <input type="checkbox"/> Graduate (□MA□Doctoral) <input type="checkbox"/> Undergrad. Research Student <input type="checkbox"/> Grad. Research Student <input type="checkbox"/> Research Institute Research Student <input type="checkbox"/> Exchange Student (□JYPE/□COLABS/□IPLA/□DEEP □DEEp-BridgeU /□DEEp-BridgeG/□Other _____) <input type="checkbox"/> Other _____ | Japanese Level (Kanji Level) | | | |
| | | Department | | | |
| | | Academic Advisor's Name | | | |
| Subject | | Day | M T W Th F | Period | 1 2 3 4 5 6 |

Class Registration Card (Submit to Class Instructor)

| | | | | | |
|-------------------|--|-------------------------------------|------------|--------|-------------|
| Name | In English Alphabet: Family name First name Middle name | In Kanji: Family name First name | J18B□□□□ | | |
| Enrollment Status | <input type="checkbox"/> Undergraduate <input type="checkbox"/> Graduate (□MA□Doctoral) <input type="checkbox"/> Undergrad. Research Student <input type="checkbox"/> Grad. Research Student <input type="checkbox"/> Research Institute Research Student <input type="checkbox"/> Exchange Student (□JYPE/□COLABS/□IPLA/□DEEP □DEEp-BridgeU /□DEEp-BridgeG/□Other _____) <input type="checkbox"/> Other _____ | Japanese Level (Kanji Level) | | | |
| | | Department | | | |
| | | Academic Advisor's Name | | | |
| Subject | | Day | M T W Th F | Period | 1 2 3 4 5 6 |

Class Registration Card (Submit to Class Instructor)

| | | | | | |
|-------------------|--|-------------------------------------|------------|--------|-------------|
| Name | In English Alphabet: Family name First name Middle name | In Kanji: Family name First name | J18B□□□□ | | |
| Enrollment Status | <input type="checkbox"/> Undergraduate <input type="checkbox"/> Graduate (□MA□Doctoral) <input type="checkbox"/> Undergrad. Research Student <input type="checkbox"/> Grad. Research Student <input type="checkbox"/> Research Institute Research Student <input type="checkbox"/> Exchange Student (□JYPE/□COLABS/□IPLA/□DEEP □DEEp-BridgeU /□DEEp-BridgeG/□Other _____) <input type="checkbox"/> Other _____ | Japanese Level (Kanji Level) | | | |
| | | Department | | | |
| | | Academic Advisor's Name | | | |
| Subject | | Day | M T W Th F | Period | 1 2 3 4 5 6 |