



UNIVERSITY OF EAST ANGLIA



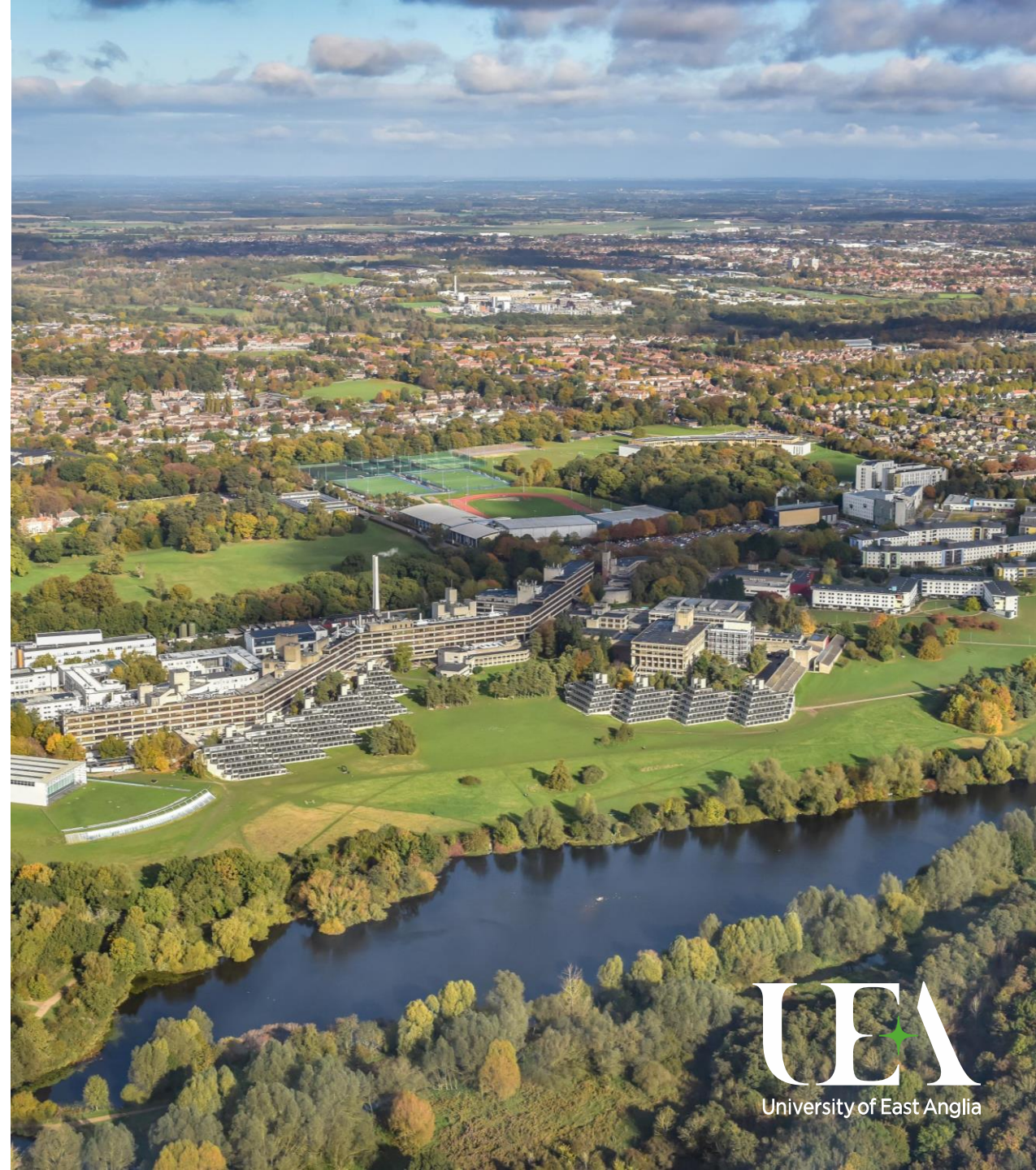
Welcome to your introduction to
UEA, Norwich

**Equity, Diversity and Inclusion
(EDI)**

UK Summer Study Programme

8th-19th August 2024

Delivered 24 April 2024 by UEA Global Programmes for
Tohoku University



Welcome to your UEA Summer Study Team

With our current UEA Student Ambassadors, and Bunny Mascot, we support you and the programme throughout your time at UEA



Alexandra Cole
*Head of Global
Programmes and
Study Abroad*



Agnieszka Lukaszczyk
*Global Programmes
Officer and Summer
Schools Manager*



Gabrielle Copping
*Global Programmes
and Partnerships
Manager*



UEA Bunny
*Summer Study
Buddy and
UEA Mascot*



WHY CHOOSE UEA?

Our city

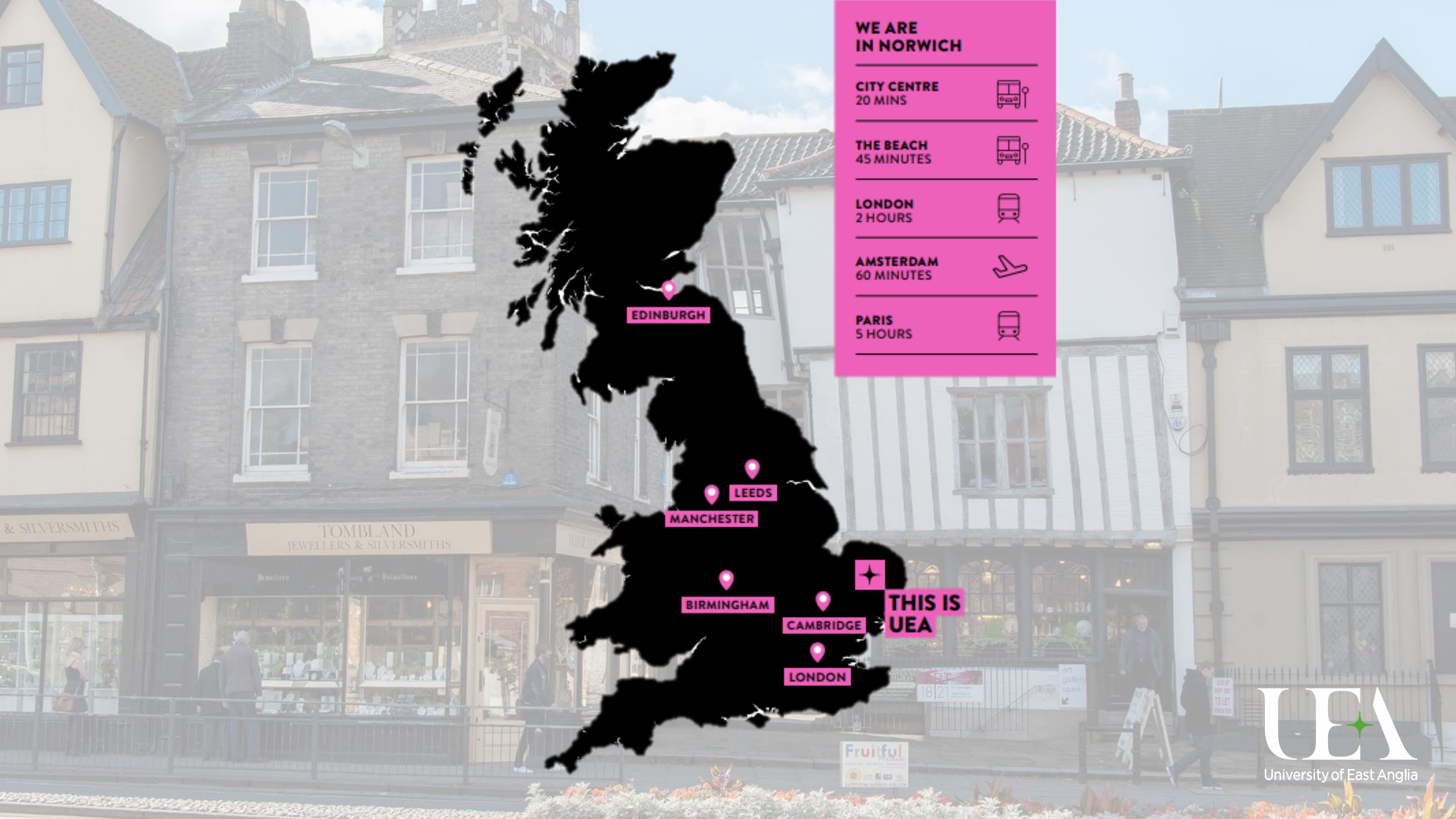
Our campus

Our people

Your programme

Your questions





WE ARE IN NORWICH

CITY CENTRE
20 MINS 

THE BEACH
45 MINUTES 

LONDON
2 HOURS 

AMSTERDAM
60 MINUTES 

PARIS
5 HOURS 

EDINBURGH

LEEDS

MANCHESTER

BIRMINGHAM

CAMBRIDGE

LONDON

THIS IS UEA



THE UNIVERSITY OF EAST ANGLIA IS IN THE CITY OF NORWICH

Norwich has the perfect mix of a cosmopolitan city vibe mixed with historic uniqueness

NORWICH CASTLE – DATING BACK TO THE 12th Century

You'll visit the Castle and the amazing views of the city

UEA
University of East Anglia



'ONE OF THE MOST UNDERRATED PLACES IN EUROPE' CNN TRAVEL 2022

Norwich is full of historic charm, with cobbly streets and Medieval walls



NORWICH CITY IS THE UK'S FIRST UNESCO CITY OF LITERATURE

UEA is world-leading in Creative Writing, amongst our alumni is Nobel Prize winner Kazuo Ishiguro who created his storytelling skills in Norwich



THE OLDEST AND LARGEST OPEN-AIR MARKET IN THE UK

During the programme we enjoy a team building challenge in Norwich city centre, starting at Norwich Market



NORWICH IS THE ONLY UK CITY LOCATED IN A NATIONAL PARK

During the UEA EDI Programme we take a trip to the waterways of the Norfolk Broads



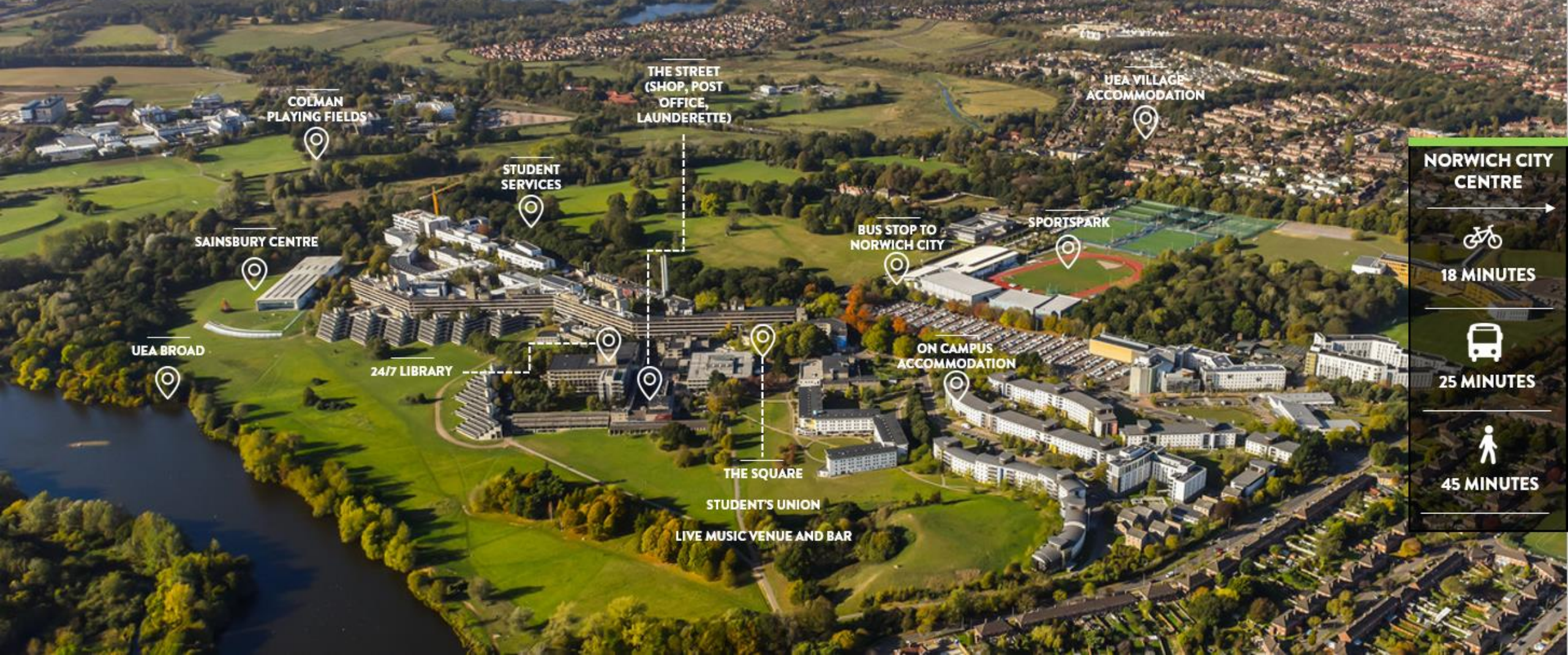
NORWICH IS ALSO CLOSE TO THE BEAUTIFUL NORTH NORFOLK COASTLINE

During the UEA EDI Programme we take a trip to the seaside town of Cromer

UEA CAMPUS



Where you will live, study and socialise during the programme – play sports, go for walks, eat, relax and explore



NORWICH CITY CENTRE

→


18 MINUTES


25 MINUTES


45 MINUTES



17,000
Students



3,500
International
Students



100+
Nationalities

As a UEA EDI Programme student you become an Alumni of UEA, just like Kazuo Ishiguro



**GLOBAL TOP 250
Times Higher Education
Rankings 2022**



**GOLD
Standard
Teaching**



**UK TOP 30
Complete University
Guide 2022**

During the UEA EDI Programme you learn from world-leading research staff, who share their expertise on areas of equity, diversity and inclusion

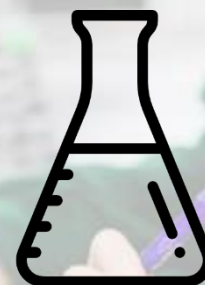
During the UEA EDI Programme you gain a range of taught learning experiences



Lectures



Seminars and presentations



Practical Work



Independent Study

The bustling centre of campus, where students often meet and socialise

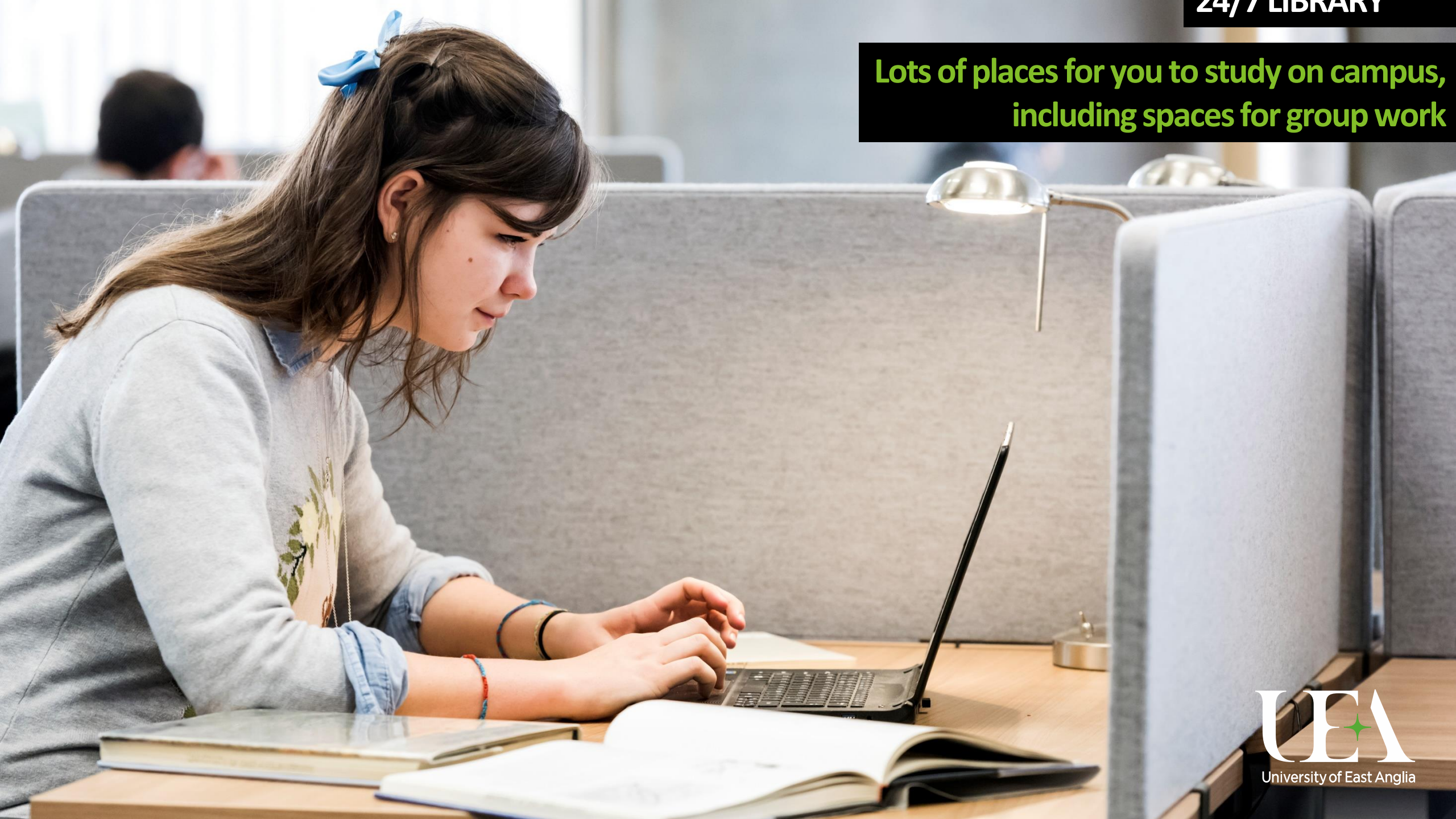




FANTASTIC FACILITIES, INCLUDING THE AWARD-WINNING SPORTSPARK

Pay and play to go for a swim, take a session on the climbing wall or book a court for any ball sports

Lots of places for you to study on campus,
including spaces for group work



AND THE INTERNATIONALLY RENOWNED SAINSBURY CENTRE

Our art gallery on campus – it's free for you to visit... the Avengers HQ!



UEA BROAD IS A LAKE, SURROUNDED BY PARKLAND, ON CAMPUS

During our UEA Wildlife Trail you'll see butterflies, otters and donkeys!





PRIVATE EN-SUITE BEDROOMS IN NELSON COURT





YOUR UEA EDI PROGRAMME

WHAT'S INCLUDED

- Transfers from arrivals airport to UEA campus and your accommodation
- Breakfast, lunch and dinner on campus, every day of the programme*
- All academic tuition, presentations' assessment, feedback and certificate presentations at finale celebration
- Academic and cultural excursions off campus, including transport and entry fees
- Orientation and team building activities, to develop graduate employability skills

*Alternatives arranged when off campus





YOUR UEA EDI PROGRAMME

ARRIVALS AND WELCOME

- Welcome and settle into UEA campus accommodation
- Course expectations, participation and engagement
- An introduction to EDI in the UK
- Orientation of UEA campus and Norwich city centre
- Cultural exploration: The Royal Sandringham Palace House and Gardens

Thursday 8th	Arrivals into Norwich International Airport 21:10	21:30-22:00 Private transfer to UEA campus	Check in to campus accommodation
Friday 9th	Breakfast on campus (late start)	10:00 Introduction to EDI at UEA, in the UK and in the HE sector	Course expectations, participation and engagement
	Lunch	14:00 Norwich city centre team building challenge	Welcome meal with University staff and students
Saturday 10th	Cultural trip to Sandringham Estate, Norfolk, one of the Royal residences of King Charles III. Visit the Edwardian house regularly used by the Royal Family, learn about the significance of St Mary Magdalene Church and take the orienteering trail around the Gardens.		
Sunday 11th	Day to explore Norwich city centre, visit the Castle and Cathedrals, go shopping, visit the theatre, the cinema and the parks – experience and absorb British culture as you settle in to living and learning in Norwich		

The order of the programme delivery days may be adjusted



YOUR UEA EDI PROGRAMME

ACADEMIC STUDY

- Gender and Sexuality in the Global South
- Gender Studies and Zine Making Workshop
- Feminist perspectives in economics, cultural economics, and the economics of wellbeing
- Communications Access and Communications Making Workshop
- Assessed Presentation Learning Outcomes
- Completion certificates and feedback
- Celebration Event

	MORNING	AFTERNOON	EVENING
Monday 12 th	Gender and Sexuality in the Global South		Study time
Tuesday 13 th	Gender Studies and (Maga)Zine Making Workshop		Trip to the Norfolk Broads
Wednesday 14 th	Feminist perspectives in economics, cultural economics, and the economics of wellbeing		Study time
Thursday 15 th	Communications Access and Communications Making Workshop		Trip to the Norfolk seaside
Friday 16 th	10:00 Assessed Presentations	Learning Outcomes	Free time
		Completion certificates and feedback	
		Celebration Event	

The order of the programme delivery days may be adjusted



YOUR UEA EDI PROGRAMME

ACADEMIC CULTURE

- Time to congratulate yourselves on the hard work and finale presentations!
- Enjoy a day trip to London, and a final day exploring campus, Norwich or further afield.
- Get ready to depart from your home for the past 10 days and think about all the academic and cultural learning you will take back to your studies.

Saturday 17th August	Cultural day trip to London, with return transport provide from Norwich to London, to include visiting the British Museum, the Natural History Museum and Tate Modern. Explore the famous landmarks including Leicester Square and Covent Garden, and go window shopping in Harrods, Selfridges and Hamleys		
Sunday 18th August	Final chance to explore Norwich city centre or further afield, have afternoon tea and go the shopping malls – take lasting photos for lasting memories of your summer study at UEA		
Monday 19th August	Breakfast on campus (early) or takeaway breakfast bags	07:30-08:00 Private transfer to Norwich International Airport	Check in for flight KL 1056 departing 09:30

The order of the programme delivery days may be adjusted



WHY CHOOSE UEA?

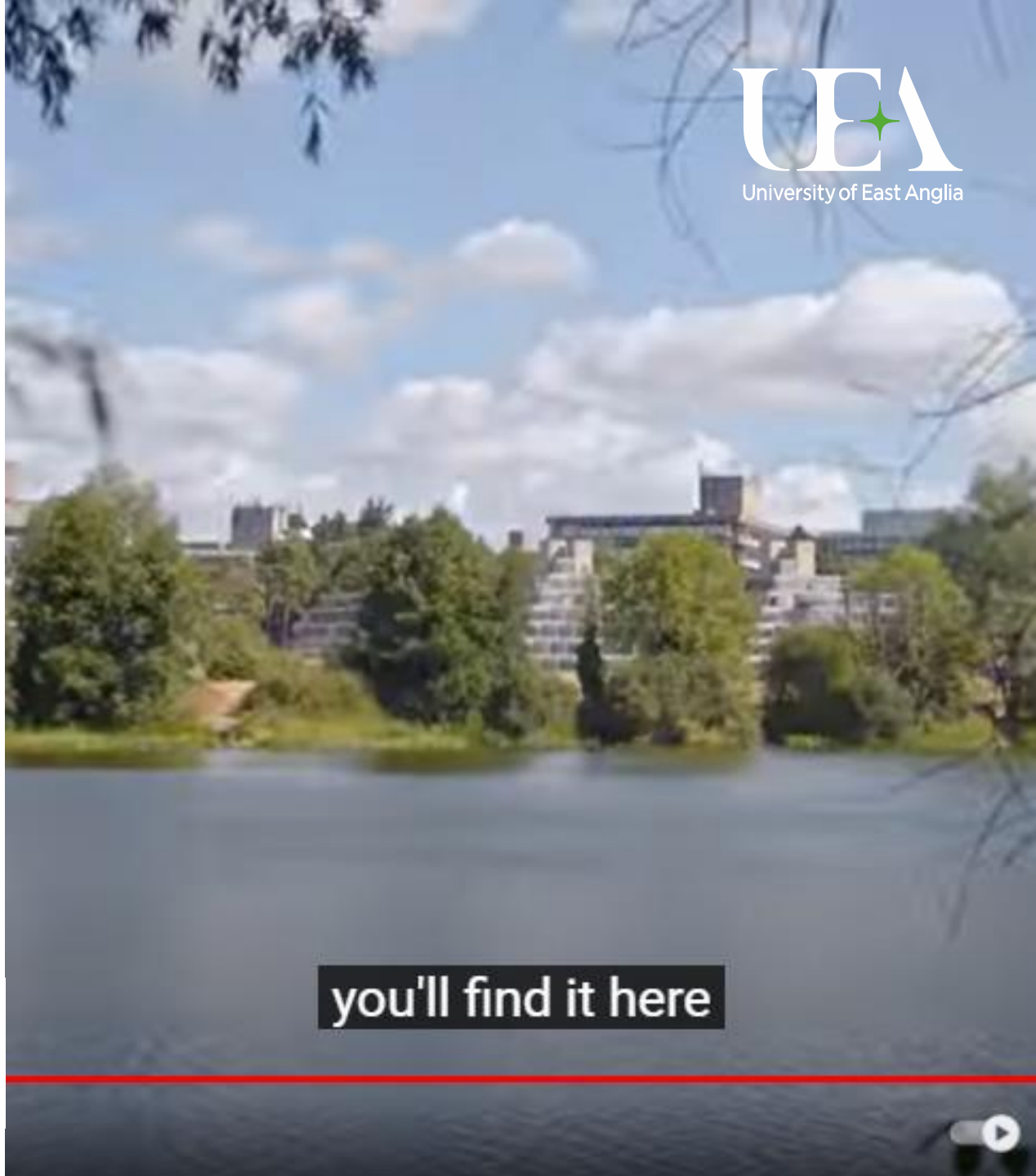
[Click to play:](#)
[This Is UEA](#)



Scan QR code to watch video later!

Join Us At UEA This Summer!
University of East Anglia, Norwich
Equity, Diversity and Inclusion (EDI)
UK Summer Study Programme
8th-19th August 2024 for **Tohoku University**

WE LOVE UEA
We know you will love it, too!



you'll find it here

