

ATTN: Japanese Language Program at Kawauchi Students

-Due to the COVID-19 pandemic, currently all inquiries for the Student Exchange Division are being conducted by email only.

Please do not telephone or come to the office in person.

We will respond to email as quickly as possible but there may be some delay. We ask for your patience and understanding.

Email: sed2@grp.tohoku.ac.jp

-A Tohoku-dai ID is necessary to take Japanese Language Program classes.

If you have not received your ID, please contact your department.

-Please carefully read the Guide on the pages below before applying for a Nihongo ID.

-You must log in to the campus network to apply for a Nihongo ID.

Campus wi-fi

<https://www.dc.tohoku.ac.jp/guide/wifi/wifi-e.html>

VPN service

<https://www.tains.tohoku.ac.jp/contents/remote/vpnstudent.html>

-Access the following URL from the campus network to log in to the academic affairs system and apply for a Nihongo ID.

<https://jlpk.bureau.tohoku.ac.jp/entry/>

-For the time being, classes for the Japanese Language Program at Kawauchi will be held online using Google Classroom, excluding some classes for co-learning seminars. We ask all students to please follow the Tohoku University Emergency Action Plan (BCP).

-Check the Google Classroom codes of the classes you want to take on the Japanese Language Program website and join the Classroom.

<http://www.he.tohoku.ac.jp/SJLE/JLPK/classroomcode.pdf>



-Please read the Enrollment Guide, which will be updated as needed, on the Japanese Language Program website.

Japanese Language Program website

<http://www.ihe.tohoku.ac.jp/SJLE/>

Tohoku University Online Class Guide

<https://sites.google.com/view/teleclass-tohoku/forstudents>

Institute for Excellence in Higher Education

Tohoku University

A Guide to the Tohoku University Japanese Language Program at Kawauchi (Updated October 3, 2022)

Second Term, AY 2022
Tohoku University Institute for Excellence in Higher Education

The Institute for Excellence in Higher Education offers the Japanese Language Program for International Students to improve the Japanese language proficiency of foreign students and researchers at Tohoku University, and other universities in Sendai. We hope that it will facilitate your everyday activities and research. There are a variety of classes, from beginner to advanced levels, so you can study at the Japanese level appropriate for you.

Table of Contents

1. Nihongo ID Application/Class Registration	1
2. Notes on Attending Class	4
3. Orientation video	5
4. Level and Subject Codes	6
5. Grading and Progression System	7
6. Eligibility for Classes	8
7. Subjects and Timetable by level	9
Level 1 (Beginning)	9
Level 2 (Basic)	10
Level 3 (Pre-Intermediate)	11
Level 4 (Intermediate)	12
Level 5 (Upper-Intermediate)	13
Level 6 (Advanced)	14
Level 0~6 Co-Learning Seminar List	15
8. Class Schedule by level	16
9. Contact Information	19
10. Kawauchi Campus Map	20
11. Classroom Locations	21

The majority of JLPK classes will be conducted online using Google Classroom, excluding some classes for co-learning seminar.

Program Term

October 3 (Mon.) to February 3 (Fri.)

The schedule may change due to the novel coronavirus pandemic. We ask for your understanding and cooperation.

Nihongo ID Application/Class Registration Schedule

BE SURE TO REGISTER DURING THE REGISTRATION PERIOD!

Second Semester: October 3 (Mon.) through February 3 (Fri.)

Nihongo ID Application Period: September 21 (Wed.) - October 17 (Mon.)

Class Registration Period: October 11 (Tue.) - October 24 (Mon.)

4th Quarter: November 28 (Mon.) through February 3 (Fri.)

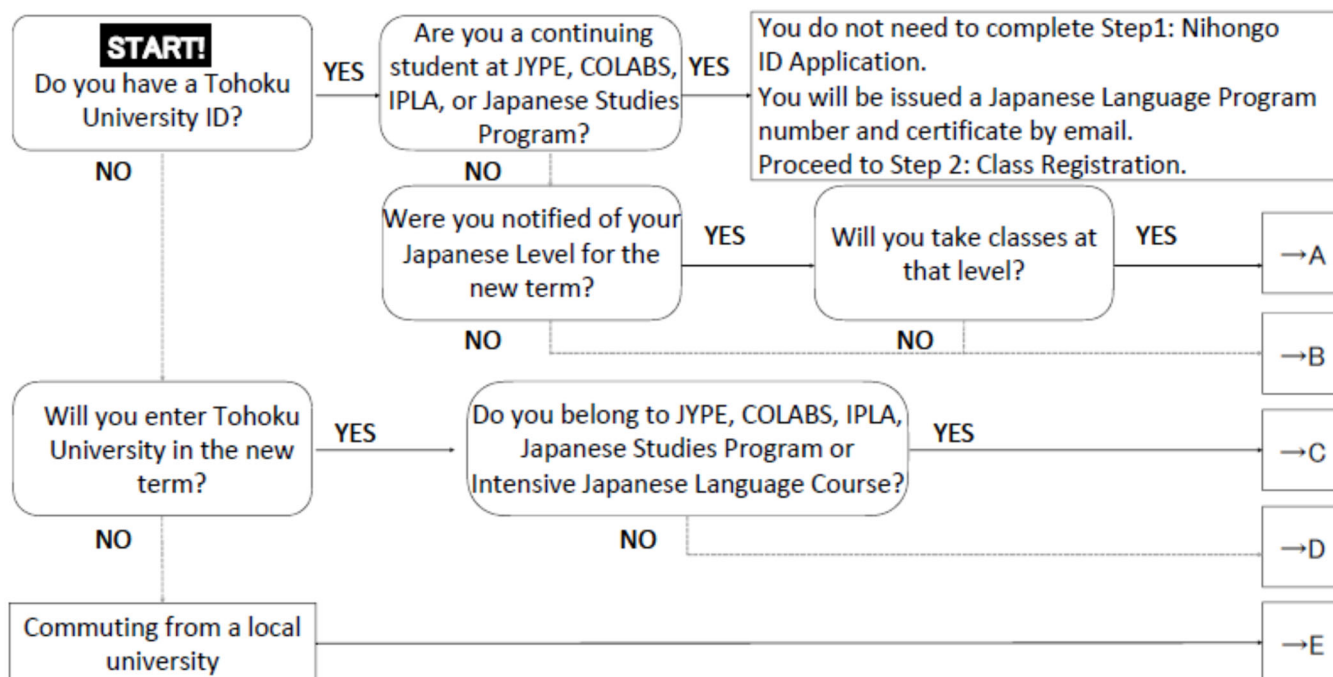
(Courses in the latter half of the term)

Nihongo ID Application Period: November 17 (Thu.) – December 2 (Fri.)

Class Registration Period: November 28 (Mon.) – December 9 (Fri.)

- ※ Deadlines for dropping classes are as follows.
 - Term-long Classes: November 30 (Wed.)
 - Half-term Classes (first part of the term): October 31 (Mon.)
 - Half-term Classes (second part of the term): December 23 (Fri.)

1. Nihongo ID Application/Class Registration



※ You must submit an application even if you applied during the previous term! You cannot use your Nihongo ID from the previous term

Step 1 : Nihongo ID Application

September 21 (Wed.) - October 17 (Mon.)

(Courses in the latter half of the term: November 17 (Thu.) –
December 2 (Fri.))

PT=Placement test

A (enrolled at TU, have an assigned Japanese level, will not take the PT):

(1) Log in to the academic affairs system from the on-campus network to apply for a Nihongo ID.

URL: <https://jlpk.bureau.tohoku.ac.jp/entry/>

*Please be sure to register your Nihongo ID from the previous term and password with the system.

(2) You will receive a Nihongo ID and Excel file by email. The Excel file is for those who are taking the placement test, so you need not submit it.

(3) Later, you will be sent a certificate showing your Japanese level for the new term.

(4) After the term starts, please perform Step 2.

B-1 (enrolled at TU, beginner, will not take the PT):

(1) Log in to the academic affairs system from the on-campus network to apply for a Nihongo ID.

URL: <https://jlpk.bureau.tohoku.ac.jp/entry/>

*Please be sure to choose “beginner” at the question 12 on the system.

(2) You will receive a Nihongo ID by email. Please complete the preparatory assignment on the website below before the start of classes.

URL: <http://www.he.tohoku.ac.jp/SJLE/kana/>

(3) Later, you will receive a Level 1 (beginner) certificate by email.

(4) After the term starts, please perform Step 2.

B-2 (enrolled at TU, studied Japanese before, will take the PT):

(1) Log in to the academic affairs system from the on-campus network to apply for a Nihongo ID.

URL: <https://jlpk.bureau.tohoku.ac.jp/entry/>

* If you have a Nihongo ID and password from the previous term, please be sure to register them with the system.

(2) You will receive a Nihongo ID and Excel file by email. You will also be provided a link to information on the placement test.

(3) Take the online placement test.

(4) Enter your test results in the Excel file and send it to the provided email address.

(5) You will be sent a certificate showing your Japanese level. If you were notified of a level for the new term, but also have a level determined by your test result, your level will be whichever is higher.

(6) After the term starts, please perform Step 2.

C-1 (not yet enrolled at TU, beginner, participating in the above programs, will not take the PT):

(1) You will receive a Nihongo ID by email. Please complete the preparatory assignment on the website below before the start of classes.

URL: <http://www.he.tohoku.ac.jp/SJLE/kana/>

(2) Later, you will receive a Level 1 (beginner) certificate by email.

(3) After entering TU, please perform Step 2.

C-2 (not yet enrolled at TU, studied Japanese before, participating in the above programs, will take the PT):

- (1) You will receive a Nihongo ID and Excel file by email. You will also be provided a link to information on the placement test.
- (2) Take the online placement test.
- (3) Enter your test results on the Excel file and send it to the provided email address.
- (4) You will be sent a certificate showing your Japanese level.
- (5) After entering TU, please perform Step 2.

D-1 (not yet enrolled at TU, beginner, general, will not take the PT):

- (1) After entering TU, log in to the academic affairs system from the on-campus network to apply for a Nihongo ID.

URL: <https://jlpk.bureau.tohoku.ac.jp/entry/>

*Please be sure to choose “beginner” at the question 12 on the system.

- (2) You will receive a Nihongo ID by email. Please complete the preparatory assignment on the website below before the start of classes.

URL: <http://www.he.tohoku.ac.jp/SJLE/kana/>

- (3) Later, you will receive a Level 1 (beginner) certificate by email.
- (4) Please perform Step 2.

D-2 (not yet enrolled at TU, studied Japanese before, general, will take the PT):

- (1) After entering TU, log in to the academic affairs system from the on-campus network to apply for a Nihongo ID.

URL: <https://jlpk.bureau.tohoku.ac.jp/entry/>

- (2) You will receive a Nihongo ID and Excel file by email. You will also be provided a link to information on the placement test.
- (3) Take the online placement test.
- (4) Enter your test results in the Excel file and send it to the provided email address.
- (5) You will be sent a certificate showing your Japanese level.
- (6) Please perform Step 2.

E (not affiliated with TU, will take the PT):

- (1) Send an email to the below address, informing us of your desire to take classes in the Japanese Language Program.

Address: jlpk@g-mail.tohoku-university.jp

*If you are unable to create a Tohoku University ID (Tohoku University email address), you will not be able to take online classes.

- (2) You will receive a survey by email.
- (3) Enter your answers on the survey form and return it by email.
- (4) You will receive a Nihongo ID and Excel file by email. You will also be provided a link to information on the placement test.
- (5) Take the online placement test.
- (6) Enter your test results on the Excel file and send it to the provided email address.
- (7) If you are rated Level 2 (basic) or higher, you will be issued a Nihongo ID and certificate by email.
- (8) Please perform Step 2.

Attending Classes

October 3 (Mon) –
(Courses in the latter half of the term: November 28 (Mon.) –)

(1) Please look at the timetable and syllabus for your level and choose the classes you will take.

URL: <http://www.he.tohoku.ac.jp/SJLE/syllabi/>

Please check the class code on the HP and register for Google Classroom.

URL: <http://www.he.tohoku.ac.jp/SJLE/JLPK/classroomcode.pdf>

(2) Please join classes suitable for your level. Please show your certificate and ask for the instructor's permission.

*Class sizes are limited. Students will be accepted on a first-come basis.

*Some classes preferentially accept students from certain programs.

*If you decide not to take a class, please contact your instructor immediately and withdraw from Google Classroom.

Step 2: Class Registration

October 11 (Tue.) - October 24 (Mon.)
(Courses in the latter half of the term: November 28 (Mon.) –
December 9 (Fri.))

Log in to the academic affairs system and register your classes using the class registration screen.

Academic affairs system : <https://jlpk.bureau.tohoku.ac.jp/student/login.php>

※ You will only be able to register only classes for which you have received permission from the instructors.

※ IPLA students will be informed about registration in a separate email. Do NOT register with the above system.

*Courses in the latter half of the term

	JLP course code
Level 1 (Beginner)	M100
Level 3 (Pre-intermediate)	A350, C350-R/W, C350-L/S, K350
Level 4 (Intermediate)	BJ480 (Intensive class)
Level 5 (Upper-Intermediate)	HS500

2. Notes on Attending Class

1. Be sure to register for classes. If you do not, you will not be able to take classes offered by this program.
2. You cannot register for classes after the deadline (October 24(Mon.)).
※ The deadline to register for classes taught in the latter half of the term is December 9(Fri.).
3. Students enrolled at universities in and around Sendai are eligible to take classes. Relatives etc. of international students are not eligible to attend classes.
※ Those enrolled in universities other than Tohoku University are eligible to take classes if they are Level 2 or higher.
4. Read the syllabus before registering for classes to learn about class goals, content, and how performance is evaluated.

Syllabus: <http://www.he.tohoku.ac.jp/SJLE/syllabi/> (after September 21)

5. Please purchase your textbooks at the bookstore in the Kawauchi Campus Welfare Facilities (see B01 in the Kawauchi Campus Map). Using copied textbooks (paper photocopies, or digital copies downloaded from the Internet) in class is forbidden. Students using such copies will not be permitted to attend class. Making illegal copies of copyrighted materials is forbidden under Japanese law.
6. Class sizes are limited. Students will be accepted on a first-come basis, so you may not be able to take all your first-choice classes.

Intensive Learning Classes up to Pre-intermediate (excluding H150, V150 and V250), NS060, RS020	Limit: 10
C100, C110, C120, B170, M100, H150, C200, C210, C220, B270, BJ480, HJ420, CM400, LC420, SC420, L500, S590, GM520, JS500, PW500, TC520, WP500, L690, S690, R690, W690, BJ680, JB600, GC680, PL600, MH600, MO600, SE600, ML000, FS000, AD000	Limit: 15
K101, V150, V250, C320, S300, C420, S400	Limit: 20
Other	Limit: 25

7. If you must be absent from class, inform the instructor directly or via a classmate. If you do not attend at least two-thirds of the total number of classes, you will receive a "D" (fail).
8. Failure to follow the above rules may result in losing eligibility to attend classes in this program.

3. Orientation video

The video below contains instructions to guide you through enrollment, from applying for a Nihongo ID to class registration. Please watch it.

<http://www.he.tohoku.ac.jp/SJLE/video/>

4. Level and Subject Codes

1. Japanese levels are numbered 1 through 6. Attainment goals are shown in the below table.

	Attainment Goals	
	CEFR/JFS	JLPT
Level 1 (Beginner)	Students will acquire conversation, reading, and writing abilities necessary for daily life.	A1 N5
Level 2 (Basic)	Students will acquire speaking, listening, reading, and writing abilities for a variety of everyday situations.	A2.1 N4
Level 3 (Pre-intermediate)	Students will acquire basic Japanese skills needed for student life and attending university classes in Japan.	A2.2 N3
Level 4 (Intermediate)	Students will acquire skills needed to read articles and essays on familiar topics of interest and write simple reports. They will also learn to listen to lectures and express their own opinions in Japanese.	B1 N2
Level 5 (Upper-Intermediate)	Students will acquire Japanese skills needed to read academic texts, write reports, listen to lectures, and make presentations.	B2 N1
Level 6 (Advanced)	Students will acquire Japanese skills needed to understand specialized academic texts, write reports, listen to lectures related to their majors, and give seminar presentations.	C1

CEFR: Common European Framework of Reference for Languages

JFS: JF Standard for Japanese-Language Education

JLPT: Japanese Language Proficiency Test

2. Please see below for an explanation of Subject Codes.

B 1 0 0

Abbreviated Class Subject

C(Comprehensive Japanese)	Learn grammar and vocabulary according to the students' level, extend "listening" "talking" "reading" "writing" skills, and comprehensively acquire Japanese language proficiency necessary for student life in Japan.
B (Basic Japanese for Business Communication)	Learn elementary conversational skills needed for various aspects of everyday life in Japan, and simple expressions used in business.
G (Grammar)	Study grammar, build fundamental Japanese skills.
L (Listening Comprehension)	Acquire listening skills necessary for student life, such as listening to lectures, understanding explanations, and so on.
S (Speaking/Conversation)	Acquire speaking skills necessary to student life, learn to make oral presentations.
R (Reading Comprehension)	Acquire fundamental reading comprehension skills necessary to read specialized/academic texts.
W (Writing/Composition)	Acquire fundamental writing skills necessary to write research plans, research papers, etc.
A(Applicative Practice)	Acquire the ability to apply the Japanese language.
H (Hiragana/Katakana)	Learn hiragana and katakana syllabaries.
K (Kanji/Vocabulary)	Learn kanji and its related vocabulary.

Japanese Level (Levels 1-6)

Priority/Exclusive Program	
0	No Priority/ Non-exclusive
1	JYPE/COLABS
2	IPLA
5	Intensive Japanese Language Program
6	Japanese Language & Culture Study Program
7	GPEM
8	DATentre (Employment Support Program)
9	General Education

Countries that use/do not use Chinese characters

0	No restrictions
1	For students from countries that do not use Chinese characters
2	For students from countries that use Chinese characters

5. Grading and Progression System

1. The grading scale for this program is as follows.

AA	Particularly excellent (90-100 points).
A	Excellent (80-89 points).
B	Good (70-79 points).
C	Passed (60-69 points).
D	Failed (0-59 points).
E	Withdrew from the class.

- ※ You will be notified of your grades at the end of each term.
- ※ If you wish to withdraw from a class, contact the class's instructor. JYPE, COLABS, and IPLA students should contact the Student Exchange Division. If you stop attending class without withdrawing, you will receive a "D."
- ※ Deadlines for dropping classes are as follows.
Term-long Classes: November 30
Half-term Classes (first part of the term): October 31
Half-term Classes (second part of the term): December 23
- ※ You will also receive a "D" if you do not attend at least two-thirds of the total number of classes.
- ※ If you require a certificate (Seiseki Shoumeisho), please ask for it at the International Education Section of the Student Exchange Division (p.19).
- ※ In general, only JYPE, COLABS, and IPLA students receive credit for classes registered in the Japanese Language Program; other students will not receive credit. However, some departments may approve credits for these classes. For details, inquire with the relevant staff at your department.

2. This program's progression system is as follows.

JYPE(Level 1-2), COLABS(Level 1-2), and IPLA(Level 1-2) Students

If you obtain a C or better, and your credits are approved, you may proceed to the next difficulty level the following term.

Students in Intensive Learning Classes

If you obtain a grade of "A" or better in C150 or C250, you may take classes that are one difficulty level higher than your current level in the second half of the term. If you obtain a grade of "B" or "C" in C150 or C250, you may proceed to the next "Tentative" difficulty level in the second half of the term.

Other students

If you fulfill the conditions indicated on the table below, you may proceed to the next difficulty level the following term without taking a placement test.

Current Term	Conditions	Following Term
Level 1	Obtain an "AA" or "A" grade in C1.	→Level 2
Level 2	Obtain an "AA" or "A" grade in C2.	→Level 3
Level 3	1. Obtain an "AA" or "A" grade in C3 or C4. 2. Obtain 2 "AA" or "A" grades in both C-L/S and C-R/W or in one of the two and another in a Level 3 or 4 course. ※1	→Level 4
Level 4	or 3. Obtain more than 3 "AA" or "A" grades in Level 3 or 4 courses other than C3, C4, L/S or R/W. ※1 ※2	→Level 5
Level 5	1. Obtain 2 "AA" or "A" grades in both C5 and another level 5 course, ※1 or 2. Obtain more than 3 "AA" or "A" grades in level 5 courses other than C5. ※1 ※2	→Level 6

※1 Except the grades of Kanji classes

※2 Obtaining 2 "B" grades is considered equal to obtaining an "A"

6. Eligibility for Classes

Classes that can be taken at each level are as follows.

- ※ If your level is marked "Tentative," you may register for classes both at your tentative level, and one level below. (E.g. if you are "Level 4 (Tentative)," you may register for both Level 4 and Level 3 classes at the same time.)
- ※ Those JYPE, COLABS, or IPLA student who are judged to be "Tentative" 2, 3, or 4 level have to decide whether to enroll in classes EITHER in your tentative level OR one level below. You cannot register for classes both at your tentative level and one level below at the same time (for example, if you are "Level 4 (tentative)," you must choose whether to register for Level 3 classes or Level 4 classes). Those JYPE, COLABS, or IPLA student who are judged to be "Tentative" 5 or 6 level may enroll in classes in your tentative level and those one level below simultaneously (for example, if you are "Level 6 (tentative)," you may enroll in Level 5 classes and Level 6 classes simultaneously).

Levels		Comprehensive	Listening	Speaking	Reading	Writing	Application/ Practical	Kana	Miscellaneous
1	2 (Tentative)	C100, C110, C120, C150*, B170, M100			R150*		A150*	H150	AD000, FS000
2		C200, C210, C220, C250a, C250b*, B270			R250*		A250a, A250b*		AD000, FS000, ML000
3	4 (Tentative)	C320, C310-L/S, C310-R/W, C350-L/S, C350-R/W	L300	S300	R300	W300	A350		AD000, FS000, ML000
4		C420, C410-L/S, C410-R/W	L400	S400	R400	W400			AD000, FS000, ML000, BJ480, HJ420, CM400, LC420, SC420, NS060*
5	5 (Tentative)	C500	L500	S590	R500	W500			AD000, FS000, ML000, BJ480, HJ420, CM400, LC420, SC420, GM520, JS500, PW500 TC520, WP500, CJ500, HS500, RS020, NS060*
6			L690	S690	R690	W690			AD000, FS000, ML000, GM520, JS500, PW500 TC520, WP500, CJ500, HS500, BJ680, JB600, GC680, PL600, MH600, MO600, SE600, PH600, RS020, NS060*

1. Classes marked with an asterisk (*) are exclusively for that program's students. Students from other programs cannot take those classes.
2. You cannot take 2 or more classes whose codes begin with the same letter (e.g. C210 and C220, R400 and R500 etc.). Also, you cannot simultaneously take C classes with C-L/S or C-R/W classes (However, we recommend taking C-L/S and C-R/W simultaneously. you can simultaneously take C-L/S with S or L classes, and C-R/W with R or W classes).
3. You must attend every session of class even if the class meets two or more times each week.
4. If you are a JYPE, COLABS, or IPLA student continuing from the previous term, and your certificate is marked "J only" (E.g. J3only, J2only, etc.) you may register only for the designated "Japanese" classes in your exchange program and a Kanji class.
5. If a two-letter code appears in the "Other" section, the class is a seminar. These are International Co-learning Seminars, except for classes marked BJ, CJ, HS, PH, RS, and NS International and Japanese students take International Co-learning Seminars together. They participate in discussions and cooperative projects to deepen their intercultural understanding. Special auditing students, non-degree students, undergraduate students, and graduate students can receive credit for International Co-learning Seminars if they register them as General Education subjects. For further details, inquire with your department's Academic Affairs Section.
6. For kanji classes, please select just one class at your designated level, or one level below or above that level. However, if the instructor does not give permission, you cannot take the class.

Kanji Level	Kanji
K1	K101, V150*
K2	K201, K202, K250, V250*
K3	K300, K350
K4	K400
K5	K500

7. Subjects and Timetable by Level

Level 1(Beginning)

Course Title	JLP course code	Class	Schedule	Notes
Beginning Comprehensive Japanese	C100	a	Wed 5-6 · Fri 5-6	Online classes will continue even if in-person classes are held
		b	Tue 1-2 · Fri 1-2	a, b (and c) will provide same contents. (Same as below)
	C110	a	Mon 1-2 · Thu 1-2	
		b	Mon 1-2 · Thu 1-2	
		c	Mon 1-2 · Thu 1-2	
	C120	a	Wed 1-2 · Fri 1-2	
		b	Wed 1-2 · Fri 1-2	
C150		Mon 1-2 · Tue 1-2 · Thu 1-2 · Fri 1-2	Only IJLC students* Express	
Beginning Japanese for Business Communication	B170		Wed 1-2	
Minimal Japanese	M100		Tue 4-5 · Thu 4-5	
Beginning Japanese Reading Comprehension	R150		Tue 3 · Fri 3	Only IJLC students* Express
Beginning Japanese Applicative Practice	A150		Mon 4	Only IJLC students* Express
Hiragana/Katakana	H150		Oct. 10 & 11	
Beginning Japanese Kanji/Vocabulary	K101	a	Mon 3 · Thu 3	
		b	Wed 3 · Fri 3	
	V150		Mon 3 · Thu 3	Only IJLC students* Express

Co-learning Seminar Course Title	JLP course code	Schedule	General Education Course Code / Notes
Beginner Aikido learning with Japanese students	AD000	Wed 3	CB33401 / In-person class More details on Google Classroom
Futsal team building with Japanese students	FS000	Fri 4	CB54202 / In-person class More details on Google Classroom

*IJLC Students → Intensive Japanese Language Course Students

* Google Classroom codes: <http://www.he.tohoku.ac.jp/SJLE/JLPK/classroomcode.pdf>

Timetable①

	1 8 : 50- 10 : 20	2 10 : 30-12 : 00	3 13 : 00- 14 : 30	4 14 : 40- 16 : 10	5 16 : 20- 17 : 50	6 18 : 00- 19 : 30
Mon	C110a Ms. Suzuki	K101a Ms. Seki	A150 Mr. Uehara			
	C110b Ms. Mikoda					
	C110c Ms. Azumi					
	C150 Ms. Usui					
Tue	C100b Ms. Seki	R150 Ms. Hayashi	M100 Ms. Uchiyama			
	C150 Ms. Moriwaki					
Wed	C120a Ms. Kikuchi	K101b Ms. Usui			C100a Ms. Usui	
	C120b Ms. Degura					
	B170 Ms. Backley	AD000 Ms. Narita				
Thu	C110a Ms. Moriwaki	K101a Ms. Azumi	M100 Ms. Suzuki			
	C110b Ms. Kikuchi					
	C110c Ms. Yan	V150 Ms. Kashiwagi				
	C150 Ms. Shukuri					
Fri	C100b Ms. Azumi	R150a Ms. Miyu Takahashi	FS000 Mr. Fujimoto		C100 Ms. Miyu Takahashi	
	C120a Ms. Backley					
	C120b Ms. Ohori	R150b Ms. Usui				
	C150 Ms. Mishima					

■ : Co-learning Seminar(p.15)

Timetable② : H150

2days intensive course to master Hiragana and Katakana

	1	2	3
Oct. 10 (Mon)	Ms. Usui		Ms. Mishima
Oct. 11 (Tue)	Ms. Moriwaki		Ms. Hayashi

Level 2(Basic)

Course Title	JLP course code	Class	T Schedule	Notes
Basic Comprehensive Japanese	C200		Wed 5-6 · Fri 5-6	Online classes will continue even if in-person classes are held
	C210	a	Mon 1-2 · Thu 1-2	a and b will provide same contents. (Same as below)
		b	Mon 1-2 · Thu 1-2	
	C220	a	Wed 1-2 · Fri 1-2	
		b	Wed 1-2 · Fri 1-2	
	C250	a	Mon 1-2 · Tue 1-2 · Thu 1-2 · Fri 1-2	Express
b		Mon 1-2 · Tue 1-2 · Thu 1-2 · Fri 1-2	Only IJLC students* Express	
Basic Japanese for Business Communication	B270		Wed 1-2	
Basic Japanese Reading Comprehension	R250		Tue 3 · Fri 3	Only IJLC students* Express
Basic Japanese Applicative Practice	A250	a	Tue 4	Express
		b	Mon 4	Only IJLC students* Express
Basic Japanese Kanji/Vocabulary	K201		Mon 3 · Thu 3	
	K202		Wed 3	
	K250		Mon 3 · Tue 3 · Thu 3 · Fri 3	Express
	V250		Mon 3 · Thu 3	Only IJLC students* Express

Co-learning Seminar Course Title	JLP course code	Schedule	General Education Course Code / Notes
Beginner Aikido learning with Japanese students	AD000	Wed 3	CB33401 / In-person class More details on Google Classroom
Futsal team building with Japanese students	FS000	Fri 4	CB54202 / In-person class More details on Google Classroom
Japanese literature in English & Japanese	ML000	Thu 4	CB44203

*IJLC Students → Intensive Japanese Language Course Students

* Google Classroom codes: <http://www.he.tohoku.ac.jp/SJLE/JLPK/classroomcode.pdf>

Timetable

	1 8 : 50-10 : 20	2 10 : 30-12 : 00	3 13 : 00-14 : 30	4 14 : 40-16 : 10	5 16 : 20-17 : 50	6 18 : 00-19 : 30
Mon.	C210a Ms. Ohori		K201 Mr. Choi	A250b Mr. Uehara		
	C210b Ms. Kikuchi		K250 Ms. Yokosawa			
	C250a Ms. Mishima		V250			
	C250b Ms. Usui		Ms. Mishima			
Tue.	C250a Ms. Yokosawa		R250 Ms. Hayashi	A250a Mr. Mori		
	C250b Ms. Moriwaki		K250 Ms. Azumi			
Wed.	C220a Ms. Kashiwagi		K202		C200 Ms. Miyu Takahashi	
	C220b Ms. Mikoda		Ms. Mishima			
	B270 Ms. Suzuki		AD000 Ms. Narita			
Thu.	C210a Mr. Mori		K201 Ms. Moriwaki	ML000 Ms. M. Mushiake		
	C210b Ms. Azumi		K250 Mr. Choi			
	C250a Ms. Kashiwagi		V250			
	C250b Ms. Shukuri		Ms. Kashiwagi			
Fri.	C220a Mr. Mori		R250 Ms. Usui	FS000 Mr. Fujimoto	C200 Mr. Choi	
	C220b Ms. Degura					
	C250a Ms. Sawabe					
	C250b Ms. Mishima					

※ : Co-learning Seminar(p.15)

Level 3 (Pre- Intermediate)

Course Title	JLP course code	Schedule	Notes
Pre-Intermediate Comprehensive Japanese	C320	Wed 1-2 · Fri 1-2	
Pre-Intermediate Comprehensive Japanese (Reading/Writing)	C310-R/W	Thu 1-2	
	C350-R/W	Tue 1-2 · Fri 1-2	Express
Pre-Intermediate Comprehensive Japanese (Listening/Speaking)	C310-L/S	Mon 1-2	
	C350-L/S	Mon 1-2 · Thu 1-2	Express
Pre-Intermediate Japanese Listening Comprehension	L300	Fri 5	Online classes will continue even if in-person classes are held
Pre-Intermediate Japanese Speaking/Conversation	S300	Thu 4	
Pre-Intermediate Japanese Reading Comprehension	R300	Tue 2	
Pre-Intermediate Japanese Writing/Composition	W300	Fri 3	
Pre-Intermediate Japanese Applicative Practice	A350	Tue 4	Express
Pre-Intermediate Japanese Kanji/Vocabulary	K300	Tue 3 · Fri 3	
	K350	Mon 3 · Tue 3 · Thu 3 · Fri 3	Express

Co-learning Seminar Course Title	JLP course code	Schedule	General Education Course Code / Notes
Beginner Aikido learning with Japanese students	AD000	Wed 3	CB33401 / In-person class More details on Google Classroom
Futsal team building with Japanese students	FS000	Fri 4	CB54202 / In-person class More details on Google Classroom
Japanese literature in English & Japanese	ML000	Thu 4	CB44203

* Google Classroom codes: <http://www.he.tohoku.ac.jp/SJLE/JLPK/classroomcode.pdf>

Timetable

	1 8 : 50-10 : 20	2 10 : 30-12 : 00	3 13 : 00-14 : 30	4 14 : 40-16 : 10	5 16 : 20-17 : 50	6 18 : 00-19 : 30
Mon.	C310-L/S Ms.Yokosawa		K350 Ms.Yokosawa			
	C350-L/S Ms. Mishima					
Tue.	C350-R/W Ms. Yokosawa		K300 Ms. Backley	A350 Mr. Mori		
		R300 Mr. Uehara	K350 Ms. Azumi			
Wed.	C320 Ms. Azumi		AD000 Ms. Narita			
Thu.	C310-R/W Mr. Choi		K350 Mr. Choi	S300 Ms. Shukuri		
	C350-L/S Ms. Kashiwagi			ML000 Ms. Mushiake		
Fri.	C320 Ms. Usui		W300 Ms. Sawabe	FS000 Mr. Fujimoto	L300 Ms. Azumi	
	C350-R/W Ms. Sawabe		K300 Mr. Choi			
			K350 Ms. Endo			

※ : Co-learning Seminar(p.15)

Level 4 (Intermediate)

Course Title	JLP course code	Schedule	Notes
Intermediate Comprehensive Japanese	C420	Wed 1-2 · Fri 1-2	
Intermediate Comprehensive Japanese (Reading/Writing)	C410-R/W	Thu 1-2	
Intermediate Comprehensive Japanese (Listening/Speaking)	C410-L/S	Mon 1-2	
Intermediate Japanese Listening Comprehension	L400	Fri 5	Online classes will continue even if in-person classes are held
Intermediate Japanese Speaking/Conversation	S400	Tue 3	
Intermediate Japanese Reading Comprehension	R400	Mon 4	
Intermediate Japanese Writing/Composition	W400	Tue 1	
Intermediate Japanese Kanji/Vocabulary	K400	Tue 3 · Thu 3	
Intermediate Business Japanese	BJ480	Intensive Summer Class Feb. 10, 13, 14, 15 2 nd – 3 rd class	First class: 2/10 10:30-14:30 xupoko@gmail.com Replace * with @. Those who wish to enroll should send an email to the address above by Jan. 13.
Japanese Language and Culture Seminar	NS060	Thu 3	Only Japanese Language & Culture Study Program students

Intermediate Co-learning Seminar Course Title	JLP course code	Schedule	General Education Course Code / Notes
Beginner Aikido learning with Japanese students	AD000	Wed 3	CB33401 / In-person class More details on Google Classroom
Futsal team building with Japanese students	FS000	Fri 4	CB54202 / In-person class More details on Google Classroom
Japanese literature in English & Japanese	ML000	Thu 4	CB44203
Honorifics in Japanese: Exploring Japanese and World Languages via the Metaverse	HJ420	Wed 4	CB34202
Language for controlling people and Media Literacy	CM400	Mon 5	CB15203
Unique Aspect of Japanese Language and Culture	LC420	Wed 4	CB34201
Seeing Home Country and Area from Japan	SC420	Fri 3	CB53203

* Google Classroom codes: <http://www.he.tohoku.ac.jp/SJLE/JLPK/classroomcode.pdf>

Timetable

	1 8 : 50-10 : 20	2 10 : 30-12 : 00	3 13 : 00-14 : 30	4 14 : 40-16 : 10	5 16 : 20-17 : 50	6 18 : 00-19 : 30
Mon.	C410-L/S Mr. Mori			R400 Mr. Choi	CM400 Ms.Shukuri	
Tue.	W400 Ms. Akiko Takahashi		S400 Mr. Nakamura K400 Ms. Moriwaki			
Wed.	C420 Ms. Mishima		AD000 Ms.Narita	LC420 Ms. Backley HJ420 Ms. Hayashi		
Thu.	C410-R/W Ms. Ohori		K400 Ms. Hayashi NS060 Ms. Sugaya	ML000 Ms. M. Mushiake		
Fri.	C420 Mr. Choi		SC420 Ms. Mishima	FS000 Mr. Fujimoto	L400 Ms.Shukuri	

※ : Co-learning Seminar(p.15)

Level 5 (Upper-Intermediate)

Course Title	JLP course code	Schedule	Notes
Upper-Intermediate Comprehensive Japanese	C500	Fri 1-2	
Upper-Intermediate Japanese Listening Comprehension	L500	Fri 5	Online classes will continue even if in-person classes are held
Upper-Intermediate Japanese Reading Comprehension	R500	Mon 4	
Upper-Intermediate Japanese Speaking/Conversation	S590	Thu 1	General Education: Japanese D Course Code : CB41207
Upper-Intermediate Japanese Writing/Composition	W500	Wed 4	
Upper-Intermediate Japanese Kanji/Vocabulary	K500	Thu 5	
Upper-Intermediate Japanese Culture Seminar: An introduction to Classical Japanese Writings	CJ500	Thu 4	
Upper-Intermediate Japanese Culture Seminar: An Introduction to Early Modern Handwritten Sources	HS500	Wed 5	
Research Seminar	RS020	Tue 5	
Japanese Language and Culture Seminar	NS060	Thu 3	Only Japanese Language & Culture Study Program students

Upper-Intermediate Co-learning Seminar Course Title	JLP course code	Schedule	General Education Course Code / Notes
Beginner Aikido learning with Japanese students	AD000	Wed 3	CB33401 / In-person class More details on Google Classroom
Futsal team building with Japanese students	FS000	Fri 4	CB54202 / In-person class More details on Google Classroom
Japanese literature in English & Japanese	ML000	Thu 4	CB44203
Reading The Tale of Genji in Multiple Languages	GM520	Thu 3	CB43208
Japanese Language and Culture in Songs	JS500	Tue 5	CB25204
Theatrical method based Workshop : basic	PW500	Mon 3	CB13202
Economic revitalization of Sendai and its shopping districts	TC520	Tue 2	CB22218
Planning a Winter Course in Sendai	WP500	Mon 5	CB15204

*In addition to the above classes, you can take Level 4 Co-learning Seminar classes. (p. 15)

* Google Classroom codes: <http://www.he.tohoku.ac.jp/SJLE/JLPK/classroomcode.pdf>

Timetable

	1 8 : 50-10 : 20	2 10 : 30-12 : 00	3 13 : 00-14 : 30	4 14 : 40-16 : 10	5 16 : 20-17 : 50	6 18 : 00-19 : 30
Mon.			PW500 Mr. H. Mushiake	R500 Ms. Yokosawa	WP500 Ms. M. Mushiake	
Tue.		TC520 Ms. Watanabe			RS020 Mr. Nakamura JS500 Mr. Uehara	
Wed.			AD000 Ms. Narita	W500 Ms. Sato	HS500 Mr. Aratake	
Thu.	S590 Ms. Suzuki		NS060 Ms. Sugaya GM520 Ms. Sato	CJ500 Ms. Sato ML000 Ms. M. Mushiake	K500 Ms. Hayashi	
Fri.	C500 Ms. Mikoda			FS000 Mr. Fujimoto	L500 Mr. Ichinose	

※ : Co-learning Seminar (p.15)

Level 6 (Advanced)

Course Title	JLP course code	Schedule	Notes
Advanced Japanese Listening Comprehension	L690	Tue 2	General Education: Japanese F Course Code : CB22226
Advanced Japanese Speaking/Conversation	S690	Thu 2	General Education: Japanese B Course Code : CB42208
Advanced Japanese Reading Comprehension	R690	Tue 3	General Education: Japanese J Course Code : CB23215
Advanced Japanese Writing/Composition	W690	Thu 3	General Education: Japanese H Course Code : CB43209
Advanced Business Japanese	BJ680	Thu 6	
Advanced Japanese Culture Seminar: Pre-modern History and Thoughts in Japan	PH600	Thu 5	
Research Seminar	RS020	Tue 5	
Japanese Language and Culture Seminar	NS060	Thu 3	Only Japanese Language & Culture Study Program students

Advanced Co-learning Seminar Course Title	JLP course code	Schedule	General Education Course Code / Notes	
Beginner Aikido learning with Japanese students	AD000	Wed 3	CB33401 / In-person class More details on Google Classroom	
Futsal team building with Japanese students	FS000	Fri 4	CB54202 / In-person class More details on Google Classroom	
Japanese literature in English & Japanese	ML000	Thu 4	CB44203	
Buddhism and Modern Japan	JB600	Tue 2	CB22205	
Global Communication	GC680	a	Mon 3	CB13203
		b	Tue 1	CB21213
Intercultural Communication (Advanced): Personal Leadership	PL600	Tue 2	CB22219	
Intellectual History of Modern Japan	MH600	Thu 2	CB42222	
A History of Occultism in the Modern Period	MO600	Wed 2	CB32402	
Japanese Society from an External Viewpoint	SE600	Tue 4	CB24210	

*In addition to the above classes, you can take Level 5 Co-learning Seminar classes. (p. 15)

* Google Classroom codes: <http://www.he.tohoku.ac.jp/SJLE/JLPK/classroomcode.pdf>

Timetable

	1 8 : 50-10 : 20	2 10 : 30-12 : 00	3 13 : 00-14 : 30	4 14 : 40-16 : 10	5 16 : 20-17 : 50	6 18 : 00-19 : 30
Mon.			GC680a Ms. Yamamoto			
Tue.	GC680b Ms. Yamamoto	PL600 Ms. Yamamoto JB600 Mr. Klautau L690 Ms. Shukuri	R690 Ms. Sugaya	SE600 Mr. Nakamura	RS020 Mr. Nakamura	
Wed.		MO600 Mr. Klautau	AD000 Ms. Narita			
Thu.		S690 Ms. Saito MH600 Mr. Morikawa	W690 Ms. Saito NS060 Ms. Sugaya	ML000 Ms. M. Mushiake	PH600 Mr. Sonehara	BJ680 Ms. Suzuki
Fri.				FS000 Mr. Fujimoto		

※ : Co-learning Seminar (p.15)

Level 0~6 Co-Learning Seminar List

Co-learning Seminars: International and Japanese students take International Co-learning Seminars together. They participate in discussions and cooperative projects to deepen their intercultural understanding.

Course Title	JLP course code	The course schedule	Recommended Level: ◎ Available Level: ○					
			1	2	3	4	5	6
Beginner Aikido learning with Japanese students	AD000	Wed 3	◎	◎	◎	◎	◎	◎
Futsal team building with Japanese students	FS000	Fri 4	◎	◎	◎	◎	◎	◎
Japanese literature in English & Japanese	ML000	Thu 4		◎	◎	◎	◎	◎
Honorfics in Japanese: Exploring Japanese and World Languages via the Metaverse	HJ420	Wed 4			○	◎	◎	○
Language for controlling people and Media Literacy	CM400	Mon 5				◎	◎	
Unique Aspect of Japanese Language and Culture	LC420	Wed 4				◎	◎	
Seeing Home Country and Area from Japan	SC420	Fri 3				◎	◎	
Reading The Tale of Genji in Multiple Languages	GM520	Thu 3					◎	◎
Japanese Language and Culture in Songs	JS500	Tue 5					◎	◎
Playback Theater Workshop : advanced	PW500	Mon 3					◎	◎
Economic revitalization of Sendai and its shopping districts	TC520	Tue 2					◎	◎
Planning KEYAKI winter program in 2022	WP500	Mon 5					◎	◎
Buddhism and Modern Japan	JB600	Tue 2						◎
Global Communication	GC680	a	Mon 3					◎
		b	Tue 1					◎
Intercultural Communication (Advanced): Personal Leadership	PL600	Tue 2						◎
Intellectual History of Modern Japan	MH600	Thu 2						◎
A History of Occultism in the Modern Period	MO600	Wed 2						◎
Japanese Society from an External Viewpoint	SE600	Tue 4						◎

※Special auditing students, non-degree students, undergraduate students, and graduate students can receive credit for International Co-learning Seminars if they register them as General Education subjects. For further details, inquire with your department's Academic Affairs Section.

8. Class Schedule by level

Level 1

	Oct.	Nov.	Dec.	Jan.	Feb.
C100a	10/5			1/27	
C100b	10/4			1/24	
C110a	10/6			1/23	
C110b	10/6			1/23	
C110c	10/6			1/23	
C120a	10/5			1/20	
C120b	10/5			1/20	
C150	10/13		12/5		
B170	10/5			1/25	
M100		11/29		1/24	
R150	10/18		12/6		
A150	10/10		11/28		
H150	10/10-11				
K101a	10/6			1/23	
K101b	10/5			1/18	
V150	10/13		12/5		
AD000	10/5			1/25	
FS000	10/7				2/3

Level 2

	Oct.	Nov.	Dec.	Jan.	Feb.
C200	10/5			1/20	
C210a	10/6			1/19	
C210b	10/6			1/19	
C220a	10/5			1/18	
C220b	10/5			1/18	
C250a	10/10		11/29		
C250b			12/8		1/31
B270	10/5			1/25	
R250			12/9		2/3
A250a	10/11		11/22		
A250b			12/12		1/30
K201	10/3			1/16	
K202	10/5			1/18	
K250	10/10		11/29		
V250			12/8		1/30
AD000	10/5			1/25	
FS000	10/7				2/3
ML000	10/6			1/26	

Level 3

	Oct.	Nov.	Dec.	Jan.	Feb.
C320	10/7				2/3
C310-R/W	10/6			1/19	
C350-R/W			12/2	1/27	
C310-L/S	10/10			1/23	
C350-L/S			12/5		1/30
L300	10/7			1/27	
S300	10/6			1/19	
R300	10/4			1/17	
W300	10/7			1/27	
A350			12/6	1/31	
K300	10/4			1/17	
K350			12/2	1/27	
AD000	10/5			1/25	
FS000	10/7				2/3
ML000	10/6			1/26	

Level 4

	Oct.	Nov.	Dec.	Jan.	Feb.
C420	10/5			1/20	
C410-R/W	10/6			1/19	
C410-L/S	10/10			1/23	
L400	10/7			1/20	
S400	10/4			1/17	
R400	10/3			1/16	
W400	10/4			1/17	
K400	10/6			1/19	
BJ480			Intensive Course : Feb. 10th, 13th, 14th, and 15th		
HJ420	10/5			1/25	
CM400	10/3			1/23	
LC420	10/5			1/25	
SC420	10/7			1/27	
AD000	10/5			1/25	
FS000	10/7				2/3
ML000	10/6			1/26	
NS060	10/6			1/26	

Level 5

	Oct.	Nov.	Dec.	Jan.	Feb.
C500	10/7			1/20	
L500	10/7			1/20	
R500	10/3			1/16	
S590	10/6				2/2
W500	10/5			1/18	
K500	10/6			1/19	
GM520	10/6			1/26	
JS500	10/4			1/24	
PW500	10/3			1/23	
TC520	10/4			1/24	
WP500	10/3			1/23	
CJ500	10/6			1/19	
HS500		11/30		1/25	
AD000	10/5			1/25	
FS000	10/7				2/3
ML000	10/6			1/26	
NS060	10/6			1/26	
RS020	10/4			1/24	

Level 6

	Oct.	Nov.	Dec.	Jan.	Feb.
L690	10/4				1/31
S690	10/6				2/2
R690	10/4				1/31
W690	10/6				2/2
BJ680	10/6			1/26	
JB600	10/4			1/24	
GC680a	10/3			1/23	
GC680b	10/4			1/24	
PL600	10/4			1/24	
MH600	10/6			1/26	
MO600	10/5			1/25	
SE600	10/4			1/24	
PH600	10/6			1/19	
AD000	10/5			1/25	
FS000	10/7				2/3
ML000	10/6			1/26	
NS060	10/6			1/26	
RS020	10/4			1/24	

9. Contact Information

Frequently Asked Questions are summarized below. Please check them before making inquiries.

<http://www.he.tohoku.ac.jp/SJLE/FAQ-e.pdf>

Inquiries about Japanese Classes

If you don't know which classes to register, or have problems with your classes, please ask your program coordinator. Please send an inquiry by email first. If you need to meet in person, please make an appointment by email.

Program Name	Coordinator (upper row : main coordinator in charge)	Department/Email Address
Japanese Language Program in general	Associate Professor Masako HAYASHI	Kawauchi Kita Campus, Kawakita Joint Building 519 Email: masako.hayashi.c5 * tohoku.ac.jp
	Associate Professor Wataru NAKAMURA	Kawauchi Kita Campus, Kawakita Joint Building 523 Email: wataru.nakamura.a8 * tohoku.ac.jp
JYPE COLABS	Professor Satoshi UEHARA	Kawauchi Kita Campus, Kawakita Joint Building 520 Email: uehara * he.tohoku.ac.jp
	Professor Natsue SUGAYA	Kawauchi Kita Campus, Kawakita Joint Building 522 Email: natsue.sugaya.e1 * tohoku.ac.jp
IPLA	Associate Professor Wataru NAKAMURA	Kawauchi Kita Campus, Kawakita Joint Building 523 Email: wataru.nakamura.a8 * tohoku.ac.jp
	Senior Assistant Professor Yukiko SHUKURI	Kawauchi Kita Campus, Kawakita Joint Building 518 Email: yukiko.shukuri.a5 * tohoku.ac.jp
Intensive Japanese Language Program	Senior Assistant Professor Yukiko SHUKURI	Kawauchi Kita Campus, Kawakita Joint Building 518 Email: yukiko.shukuri.a5 * tohoku.ac.jp
	Professor Satoshi UEHARA	Kawauchi Kita Campus, Kawakita Joint Building 520 Email: uehara * he.tohoku.ac.jp
Japanese Studies Program	Professor Natsue SUGAYA	Kawauchi Kita Campus, Kawakita Joint Building 522 Email: natsue.sugaya.e1 * tohoku.ac.jp

※ The location of the Kawakita Joint Building is shown on A07 in the Kawauchi Campus Map.

※ Replace * with @ in email addresses.

※ If you need to contact class instructors, please do so through Google Classroom.

Inquiries about Official Procedures

Student Exchange Division, International Education Section
Kawauchi Kita Campus Education and Student Support Center, 2F
(See A01 in the Kawauchi Campus Map)
Email: sed2*grp.tohoku.ac.jp

(Nihongo ID application, class registration, placement test, etc.)

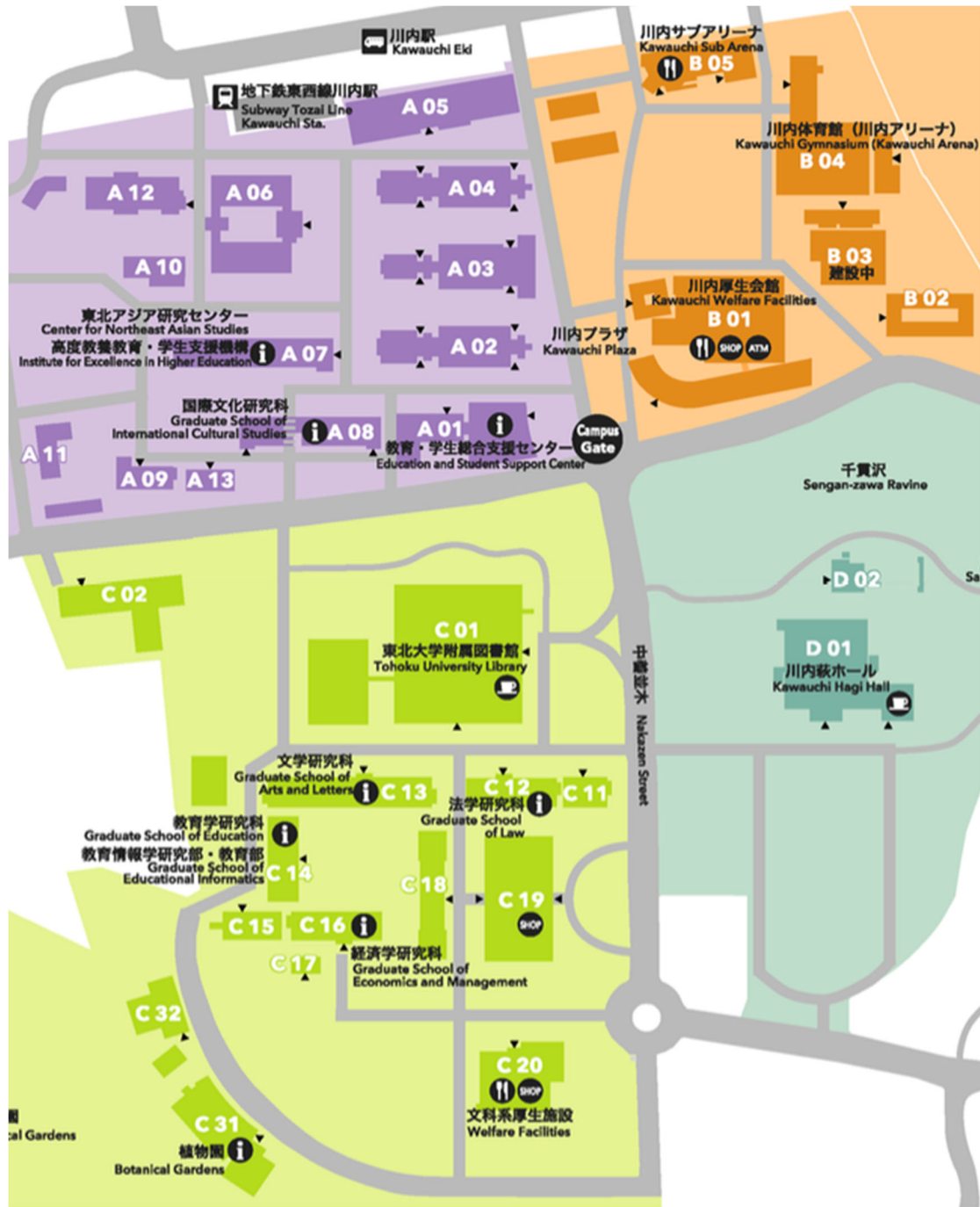
Japanese Language Program at Kawauchi
Kawauchi Kita Campus International Exchange Building 1F R113 (see A12 in the Kawauchi Campus Map)
Email: adm-jljk*g-mail.tohoku-university.jp

Note: 1. Replace * with @ in email addresses

2. We cannot respond to inquiries on weekends or holidays.

3. We do not issue hours certificates.

10. Kawauchi Campus Map



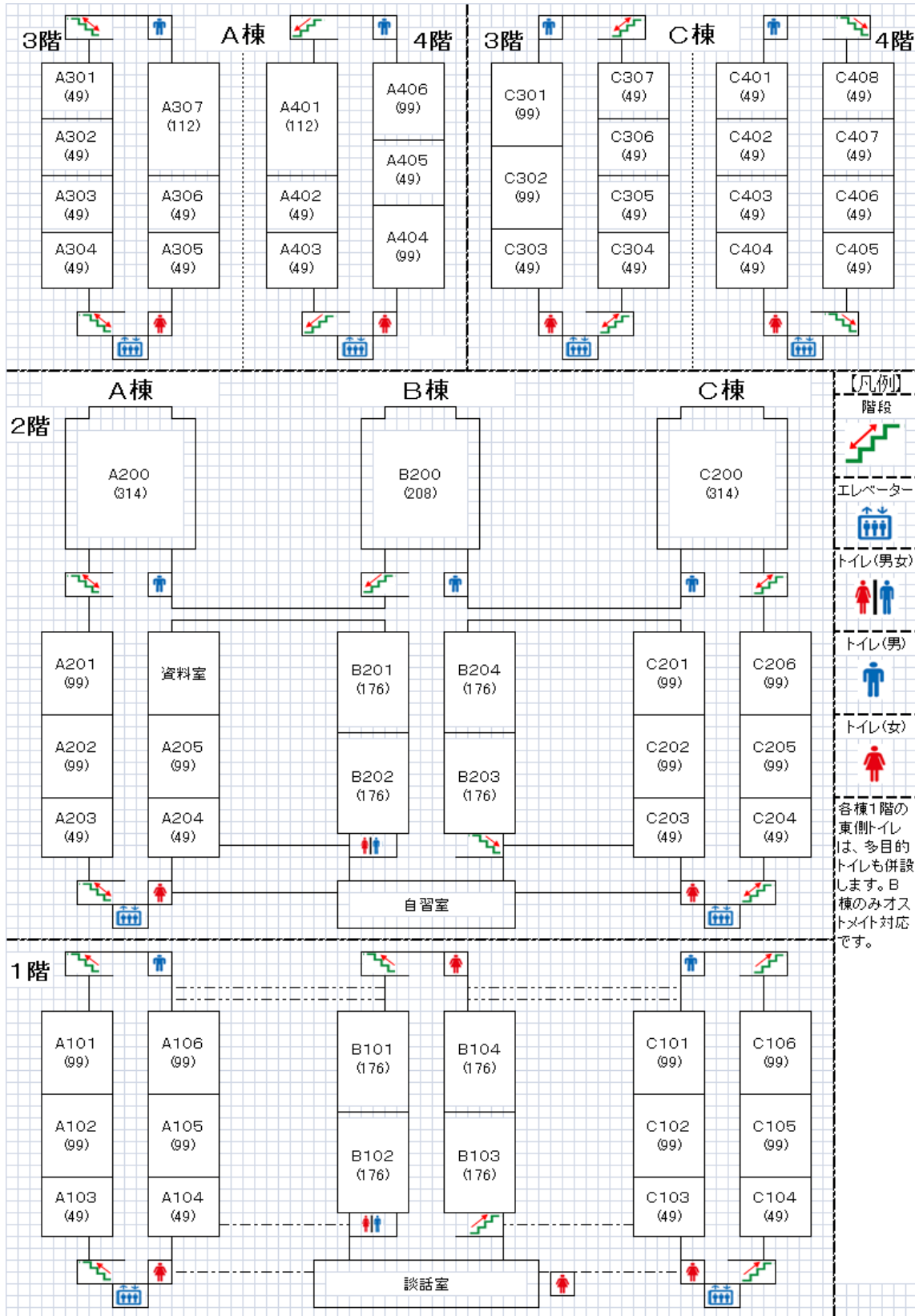
- A 01** 教育・学生総合支援センター
Education and Student Support Center
- A 02** 講義棟A棟
Lecture Rooms A
- A 03** 講義棟B棟
Lecture Rooms B
- A 04** 講義棟C棟
Lecture Rooms C
- A 05** マルチメディア教育研究棟 (教育情報基盤センター)
Multimedia Education and Research Complex (Center for Information Technology in Education)
- A 06** 学生実験棟
Student Laboratories
- A 07** 川北合同研究棟
Kawauchi Research Forum
(高度教養教育・学生支援機構/東北アジア研究センター)
(Institute for Excellence in Higher Education / Center for Northeast Asian Studies)
- A 08** 国際文化研究棟
Graduate School of International Cultural Studies
- A 09** 保健管理センター
Student Health Care Center
- A 10** 教育研究基盤支援棟 4
Education and Research Base Support Building 4
- A 11** 教育研究基盤支援棟 5
Education and Research Base Support Building 5
- A 12** 国際交流棟
International Exchange Building
- A 13** 学生相談所
University Counseling Center

- B 01** 川内厚生会館
Kawauchi Welfare Facilities
- B 02** 川内サークル部室棟
Kawauchi Circle and Club Building
- B 03** 川内課外活動共用施設 (川内ホール)
Kawauchi Extracurricular Activity Shared Facilities (Kawauchi Hall)
- B 04** 川内体育館 (川内アリーナ)
Kawauchi Gymnasium (Kawauchi Arena)
- B 05** 川内サブアリーナ
Kawauchi Sub Arena

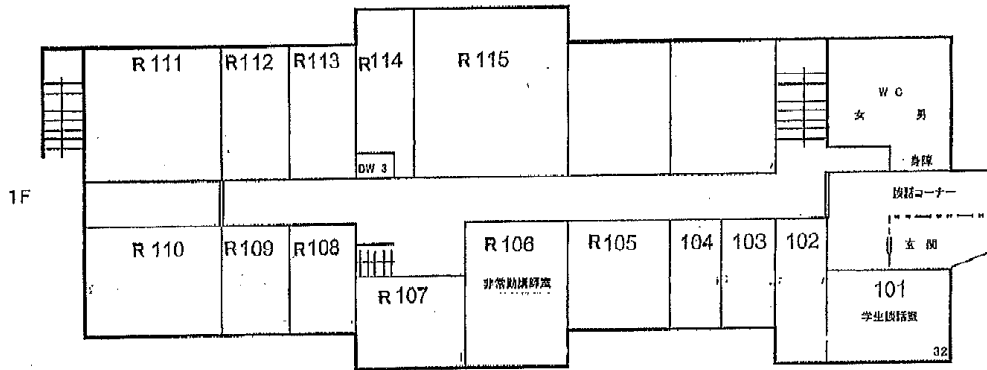
- C 01** 東北大学附属図書館
Tohoku University Library
- C 02** 入試センター
Admission Center
- C 11** 文・法合同研究棟
Arts and Letters / Law Joint Building
- C 12** 法学研究科棟
Graduate School of Law
- C 13** 文学研究科棟
Graduate School of Arts and Letters
- C 14** 文科系総合研究棟 (教育学研究科)
New Humanities Building (Graduate School of Education)
- C 15** 文科系合同研究棟
Humanities Building
- C 16** 経済学研究科棟
Graduate School of Economics and Management
- C 17** 経済学研究科演習室
Seminar Rooms
- C 18** 中講義棟
Lecture Rooms
- C 19** 文科系総合講義棟
Lecture Rooms
- C 20** 文科系厚生施設 (メイプルパーク川内)
Welfare Facilities (Maple Park Kawauchi)

11. Classroom Locations

A, B, and C Classrooms (A02, A03, A04)



International Exchange Building (A12)



Multimedia Education and Research Complex (A05)

