

★ CONCEPT

Training Human Resources that can Drive Internationalization

(International Perspectives on Learning)

Japanese and foreign students live together (men and women live on separate floors) to acquire an international viewpoint and deepen their understanding of different cultures.

Unit configuration of independent 8LDK

(Developing Cooperativeness and Social Skills)

By living together in a unit composed of eight private rooms and a shared open living room, students develop cooperativeness and social skills. (8 people x 94 units)

In addition, we will promote active exchange between residents.

- Interaction lounge/ Training room
- Common lounge around the elevator (central part of every building)
- Interaction deck (in Central-park)



A Safe, Secure and High Quality Living Environment

Fully Equipped with Furniture & Home Appliances

Residents can start college life with a single suitcase. In principal, you cannot bring your own homeware. However, rental bedding, tableware, bathmats, and Internet service are provided as mandatory services for all residents. The open living room is equipped with a TV, refrigerator, microwave oven, and other home appliances.

Services for Residents

For residents who need them, other houseware, furniture and household appliance rental services, catering service for breakfast and dinner, and laundry service are offered.

Security

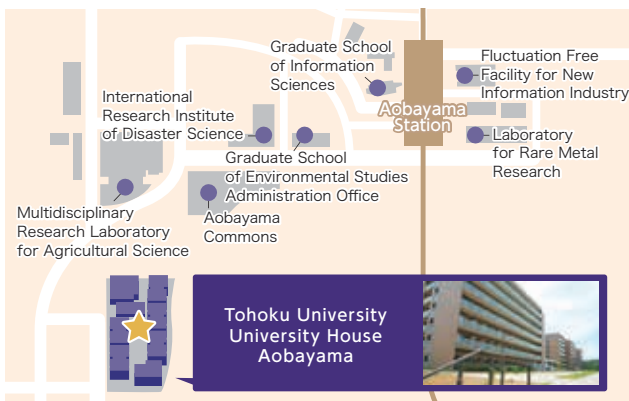
A management company provides 24-hour/365-day support, and cleans, guards and responds to problems with facilities or equipment and emergencies. Furthermore, each building and each unit have cardkey readers, and each private room has a number key.

Events

Senior students are appointed as advisors to help new residents (new students) smoothly adjust to college life. Advisors will give advice about Sendai city, campus life, and dormitory life. They also plan and conduct events aimed at promoting exchange between residents such as welcome parties.



ACCESS



- About 10 minutes on foot from Aobayama Station (Sendai city Tozai Line)

Tohoku University University House Aobayama

Address 468-1 Aoba Aramaki Aoba-ku, Sendai-shi

URL <http://university-house-aobayama.com/>



※For application period / application method, please contact here.

Tohoku University Education and Student Support Department Student Service Division Life Support Section

(Kawauchi-Kita Campus, Education and Student Support Center No.3 window)

〒980-8576 41, Kawauchi, Aoba-ku, Sendai

TEL : 022-795-3943,3944

FAX : 022-795-7771

<https://www.tohoku.ac.jp/japanese/studentinfo/studentlife/05/studentlife0501/>

FACILITY

Huge Public Space where Interaction is Born

There is a public space, over 400 m² in size, equipped with an interaction lounge, training room, mini convenience store (open 24 hours), and vending machine corner.

The interaction lounge's size can be adjusted with partitions. More than 100 people can take lectures in the training room.



MEAL



Breakfast and dinner are served at the interaction plaza interaction lounge. We provide home-delivered boxed meals to residents upon request. Please apply at the new residence orientation. Or you can apply at the dorm management office anytime at a later date.

- **Date** : Monday to Friday (including national holidays)
- **Time** : Breakfast 7:00 ~ 9:00
Dinner 18:00 ~ 21:00
- **Place** : Interaction Plaza, Interaction Lounge

FRONT SERVICE

We offer the following services at the front desk. Please feel free to use them. (Fee required.)

Application for Breakfast and Dinner

In addition to applications for long-term (monthly etc.) meal service, we also accept requests for single meals as necessary.

Dry Cleaning

Dry cleaning service is available at the dorm management office.
Days : Monday and Thursday
Time : 7:00 ~ 21:00

Furniture/Household Appliance Rental Service

Furniture and household appliances are already provided in the open living rooms and private rooms. In addition, you can rent the following items as necessary.

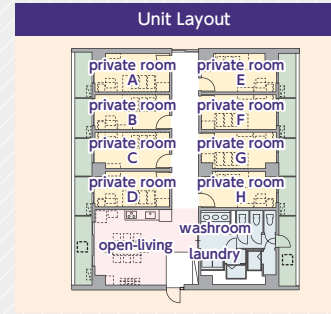
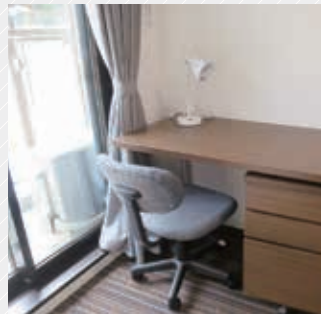
Household Supplies (Kitchen Supplies)

We will distribute kitchen supplies at the dorm management office once a month. In case you run out, please inform the dorm management office.



ROOM

Private rooms and open living rooms are equipped with necessary furniture and home appliances, so residents can easily move in and start campus life. A management company provides 24-hour/365-day support, and cleans, guards and responds to problems with facilities or equipment and emergencies.



※Basic unit type. The unit in Building 6 is somewhat different.

- **Room Size** / 11.88 m² ~ 12.37 m²
- **Facility** / Desk, Caster wagon, Chair, Bookshelf, Bed, Closet, Air conditioner, Balcony, etc.



Open Living Room

- **Average Rom Size** / 72 m²
- **Facility** / Air conditioner , IH cooking heater , Table(for 8 people), Chair, Microwave , Refrigerator, Rice cooker , TV, Vacuum cleaner, Iron, Kitchenware, etc.

RESIDENTS

Eligible Students

- New undergraduate or new graduate students
 - International Students
- ※Including students who can commute to school from their homes.

Period of Stay 2 years or shorter

Capacity 752 people

Japanese : 376 people
male 220 people female 156 people

International students : 376 people
male 220 people female 156 people

※4 private rooms for students with disabilities (2 rooms for men, 2 rooms for women)

Fees paid by residents

Item	Monthly Charge (including tax)
Rent ※1	¥ 28,000
Common Service Fee ※2	¥ 1,500
Utility Costs	Actual expense
Bedclothes Rental Service	¥ 2,000★
Plates & Silverware Rental Service	¥ 500★
Household Commodities Rental Service	¥ 500★
Bath Mat	¥ 1,000★
Internet Connection	¥ 1,500★
Fee for Exchanging Residents	¥ 500★
Deposit Upon Arrival ※3	¥ 30,000 (As security deposit at arrival)

★Mandatory Services for All residents

- ※1 When moving in the middle of month, these charges will be half of the regular fee. (This discount applies to the last month written on the resident's permit.)
- ※2 When moving in the middle of month, these charges will be half of the regular fee. (This discount applies to the last month written on the resident's permit.) This fee is used for the TV subscription fee in the open living room and utility fees in the common space for all residents.
- ※3 Collected when moving in, and will be used to cover necessary utility and cleaning fees when leaving. Depending on the situation, it may be used for repairs. The rest will be returned. If repair and other fees exceed the deposit, the due amount will be collected when you leave.
- ※ The total average monthly amount for rent, maintenance, utility, and mandatory service fees for all residents is ¥42,000 to ¥45,000.
- ※ For an outline of mandatory services for all residents, please refer to 'Tohoku University, University House Aobayama Service Information' on the Tohoku University website. Various other rental items are also available.

Q&A

Q. What should I bring when moving in?

A. All furnishings necessary for daily life are provided.
Please bring just personal necessities such as laundry detergent, shampoo, body soap etc. on your own.

Q. Can I bring furniture or household appliances?

A. Please be sure to consult the dorm management office in advance of bringing in items other than the rental items.
Bringing furniture is prohibited in principle. Bringing appliances other than devices such as PCs, printers, portable music players etc. to use in your private room is prohibited. However, if you have a compelling reason, for example, you need an air cleaner because of asthma, you will be allowed upon consultation.