



A Guide to the Tohoku University Japanese Language Program for International Students



Fall 2016

Tohoku University

Institute for Excellence in Higher Education

Table of Contents

1. About the Japanese Language Program for International Students
 2. Levels
 3. List of Courses
 4. Course Map
 5. Timetable
 6. Class Start Schedule
 7. Registering for Classes
 8. Classes
 9. Notes on Attending Class
 10. Evaluation Methods
 11. E-learning Program
 12. Inquiries
 13. Map of Kawauchi Campus
 14. Classroom Locations
- Appendix 1. Registration Form
- Appendix 2. Class Registration Cards

1. About the Japanese Language Program for International Students

The Institute for Excellence in Higher Education offers the Japanese Language Program for International Students to improve the Japanese language proficiency of foreign students and researchers at Tohoku University and facilitate their smooth adaptation to life in Japan. This program offers a variety of classes from basic to advanced levels. Students may select and take classes as appropriate to their own level of Japanese proficiency and interests.

2. Levels

Level 1 (Beginner)	Students will learn the minimum, basic conversation and reading/writing skills necessary for everyday life in Japan.
Level 2 (Basic) CEFR*/JF **A1 JLPT*** N5	Students will learn simple conversation and reading/writing skills needed for everyday life in Japan.
Level 3 (Pre-Intermediate) CEFR/JF A2.1 JLPT N4	Students will learn basic Japanese skills needed for everyday life and attending university classes in Japan.
Level 4 (Intermediate) CEFR/JFS A2.2 JLPT** N3	Students will learn practical Japanese skills needed to read articles and essays on familiar topics of interest and write simple reports on them, listen to lectures, and express their own opinions.
Level 5 (Upper-Intermediate) CEFR/JFS B1 JLPT N2	Students will learn Japanese skills needed to read research papers and specialized texts in university classes, write reports, listen to lectures, and participate in discussions and presentations.
Level 6 (Advanced) CEFR/JFS B2 JLPT N1	Students will learn Japanese skills needed to understand research papers, specialized texts, and academic writing related to their majors, write reports, listen to lectures related to their majors, and give oral presentations.

*CEFR: Common European Framework of Reference for Languages

**JFS: Japan Foundation Standard for Japanese-Language Education

***JLPT: Japanese Language Proficiency Test

3. List of Courses

Level	Qualification	Course code	The starting date	the final date	class	The course schedule	International Co-learning Codes
Level 1 (Beginner)	Beginning Japanese	B100	10/13	2/2	a	Mon.1-2 • Thu.1-2	
			10/14	2/7	b	Tue.1-2 • Fri.1-2	
			10/18	2/9	c	Tue.1-2 • Thu.1-2	
		B110	10/6	1/30	d	Mon.1-2 • Thu.1-2	
			B150	10/18	12/5		Mon.1-2 • Tue.1-2 Thu.1-2 • Fri.1-2

	Beginning Japanese Business Communication	C170	10/12	2/8		Wed.1-2	
	Beginning Japanese Practice	P150	10/25	12/6		Tue.4	
	Hiragana/Katakana	H150	10/13	10/17		10/13 (Thu.) 1-3 10/14 (Fri.) 1-3 10/17 (Mon) 1-3	
	Beginning Japanese Kanji	K101	10/14	1/3		Tue.3 • Fri.3	
		K102	10/13	1/30		Mon.3•Thu.3	
		K151	10/20	2/9		Mon.3 • Thu.3	
Level 2 (Basic)	Basic Japanese	B200	10/18	2/7		Tue.1-2 • Fri.1-2	
		B210	10/6	1/30	a b	Mon.1-2 • Thu.1-2	
		B220	10/7	2/1		Wed.1-2 • Fri.1-2	
		B250	10/14	12/1	a	Mon.1-2 • Tue.1-2	
	12/6		2/6	b	Thu.1-2 • Fri.1-2		
	Basic Japanese Business Communication	C270	10/12	2/8		Wed.1-2	
	Basic Japanese Practice	P250	10/18	11/29	a	Tue.4	
	12/13		2/7	b			
	Basic Japanese Kanji	K201	10/18	2/7		Tue.3 • Thu.3	
		K202	10/14	2/10		Fri.3	
K250		10/14	12/2		Mon.3 • Tue.3 Thu.3 • Fri.3		
Level 3 (Pre - Intermediate)	Pre-Intermediate Japanese Grammar	G300	10/11	1/24		Tue.4	
		G310	10/6	1/26		Thu.1	
		G320	10/12	2/1		Wed.1	
		G350	12/5	1/31		Mon.1 • Tue.1	
	Pre-Intermediate Japanese Speaking/Conversation	S300	10/19	1/8		Wed.3	
		S310	10/17	1/30		Mon.1	
		S320	10/7	2/3		Fri.1	
		S350	12/2	2/2		Thu.1 • Fri.1	
	Pre-Intermediate Japanese Reading/Comprehension	R310	10/6	1/26		Thu.2	
		R320	10/12	2/1		Wed.2	
		R350	12/5	1/31		Mon.2 • Tue.2	
	Pre-Intermediate Japanese Writing/Composition	W300	10/11	1/24		Tue.3	
		W350	12/6	1/31		Tue.4	
	Pre-Intermediate Japanese Practice	P310	10/17	1/30		Mon.2	
		P320	10/7	2/3		Fri.2	
		P350	12/2	2/2		Thu.2 • Fri.2	
	Pre-Intermediate Japanese Kanji/Vocabulary	K300	10/12	2/8		Wed.4 • Fri.5	
		K350	12/5	2/3		Mon.3 • Tue.3 Thu.3 • Fri.3	
	Intermediate Japanese Grammar		G410	10/6	1/26		Thu.1

Level 4 (Intermediate)		G440	10/12	2/1	Wed.1	
		G460	10/13	12/1	Mon.3 • Thu.3	
	Intermediate Japanese Speaking/Conversation	S400	10/11	1/24	Tue.2	
		S410	10/17	1/30	Mon.1	
		S440	10/7	2/3	Fri.1	
	Intermediate Japanese Reading/Comprehension	R410	10/6	1/26	Thu.2	
		R440	10/12	2/1	Wed.2	
	Intermediate Japanese Writing/Composition	W400	10/12	2/1	Wed.3	
	Intermediate Japanese Practice	P410	10/17	1/30	Mon.2	
		P440	10/7	2/3	Fri.2	
	Intermediate Japanese Kanji/Vocabulary	K400	10/13		Mon.4 • Thu.4	
	Intermediate Japanese Culture Seminar: Collaborative Project	CP400	10/5	2/1	Wed.3	CB33239
	Intermediate Japanese Culture Seminar: Short Program Planning	SP400	10/4	1/24	Tue.1	CB21209
Intermediate Japanese Culture Seminar: Seeing Home Country and Area from Japan	SC430	10/7	2/3	Fri.4	CB54206	
Intermediate Japanese Culture Seminar: Traditional Culture	TC430	10/5	2/1	Wed.3	CB33240	
Level 5 (Intermediate/Advanced)	Upper-Intermediate Japanese Grammar	G500	10/11	1/24	Tue.3	
		G560	12/5	2/2	Mon.3 • Thu.3	
	Upper-Intermediate Japanese Reading/Comprehension	R500	10/13	2/2	Thu.4	
	Upper-Intermediate Japanese Practice	P530	10/7	2/3	Fri.4	
	Upper-Intermediate Japanese Kanji/Vocabulary	K500	10/12	2/1	Wed.5	
	Upper-intermediate Japanese Culture Seminar: Cross-cultural Communication	CC500	10/4	1/24	Tue.2	CB12236
	Upper-intermediate Japanese Culture Seminar: Intercultural Communication	IC500	10/3	1/30	Mon.5	CB15210
	Upper-intermediate Japanese Culture Seminar: Japanese Culture	JC500	10/3	1/30	Mon.3	CB13216
	Upper-intermediate Japanese Culture Seminar: Japanese Language	JL500	10/3	1/30	Mon.4	CB14216
	Upper-intermediate Japanese Culture Seminar: Japanese Movie	JM500	10/4	1/24	Tue.4	CB24234
	Upper-intermediate Japanese Culture Seminar: Japanese songs	JS500	10/11	1/24	Tue.5	CB25223
	Upper-intermediate Japanese Culture Seminar: Multi-cultural Communication	MC500	10/7	2/3	Fri.5	CB55214
Upper-intermediate Japanese Culture Seminar: Modern Japanese	MJ500	10/6	2/2	Thu.5	CB45212	
Level 6 (Advanced)	Advanced Seminar on Japanese Culture Pre-modern Japanese History and Thought Pre-modern History	PH600	10/13	2/2	Thu.5	
	Advanced Japanese Culture Seminar: Business Journalism Internship	BJ600	10/7	1/6	Fri.3	CB53207
	Advanced Japanese Culture Seminar: Modern History	MH600	10/6	2/2	Thu.2	CB43227
	Advanced Japanese Culture Seminar: Writing and Argument	WA600	10/4	1/24	Tue.4	CB24233
Levels 1-6	E-learning	E000	10/20	2/9	Thu.5	
Levels 2-6	Japanese Culture Seminar: Modern Literature	ML000	10/6	2/2	Thu.3	CB43226

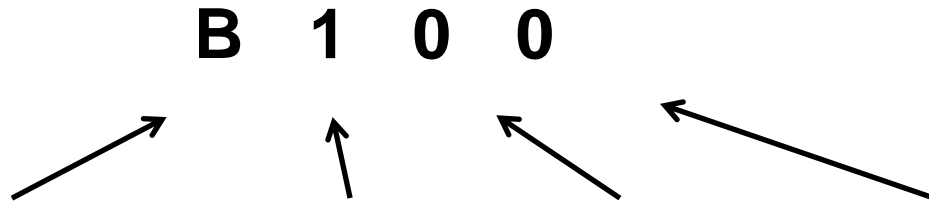
*In International Co-learning classes, Japanese and international students study together. These classes are integrated with the General Education curriculum. Special auditing students, special research students, non-degree students, undergraduate students, and graduate students can register, and receive credit, for General Education subjects. For further details, inquire with your department's Educational Records and Programs Section.

- Read the syllabus before classes begin to learn about class goals, content, and method of evaluating performance.

Syllabus: URL <http://www.jpok.ihe.tohoku.ac.jp/syllabi/>

How to Read Japanese Language Program Codes

Each class in this program has its own individual code. You can use these codes to distinguish the classes. The meanings of the letters and numbers that make up the codes are explained below.



Codes with a single letter are for Japanese language classes. Codes with two letters are seminar classes. The 1-letter codes are explained below.

B (Beginner/ Basic)	Students study basic grammar, hone the four essential skills (listening, speaking, reading, and writing), and acquire the necessary knowledge and proficiency to lead a student life in Japan.
G (Grammar)	Students study grammar to improve their fundamental Japanese proficiency.
C (Japanese Business Communication)	Students will acquire elementary communication abilities for business situations.
S (Speaking)	Students will hone speaking skills necessary for university study, and for oral presentations in particular.
R (Reading)	Students will hone reading skills necessary to read texts related to their majors.
W (Writing)	Students will hone writing skills necessary to write reports and research papers.
P (Practice)	Students will improve their comprehensive, practical Japanese abilities by listening to and understanding Japanese on and off campus, then presenting what they heard and expressing their own opinions.
K (Kanji)	Students will study kanji and related vocabulary.
H (Hiragana/Katakana)	Students will study hiragana and katakana.

Japanese Level
(Levels 1-6)

Priority Programs

0	No priority given
1	JYPE COLABS
2	IPLA
3	DEEP-Bridge
4	DEEP-Bridge IPLA
5	Intensive Japanese Language Program
6	Japan-Korea Program
7	GPEM

Countries the use/do not use

Chinese characters

0	No restrictions
1	For students from countries that do not use Chinese characters
2	For students from countries that use Chinese characters

4. Course Map

Japanese Language Program for International Students

	Japanese Language						E-learning	Seminar	
	General Japanese Language	Japanese Language Skills						International Co-learning	International students only
	Basic Comprehensive/ Grammar	Speaking	Reading	Writing	Practice	Characters			
B/G	S/C	R	W	P	K				
Level 6 (Advanced)							E000	BJ600, MH600, WA600	PH600
Level 5 (Upper-Intermediate)	G500		R500		P530	K500		CC500, IC500, JC500, JL500, JM500, JS500, MC500, MJ500	
Level 4 (Intermediate)	G410 G440	S400 S410 S440	R410 R440	W400	P410 P440	K400		CP400, SP400, SC430, TC430	
Level 3 (Pre-Intermediate)	G300 G310 G320	S300 S310 S320	R310 R320	W300	P310 P320	K300			
Level 2 (Basic)	B200 B210 B220	C270				K201 K202			
Level 1 (Beginner)	B100 B110	C170				K101 K102 K151			

Intensive Learning Classes*

Mid October to early December

	Japanese Language				
	General Japanese Language	Japanese Language Skills			
	Basic Comprehensive	Speaking	Reading	Practice	Characters
	B	S	R	P	H/K
Level 6 (Advanced)					
Level 5 (Upper-Intermediate)					
Level 4 (Intermediate)	G460				
Level 3 (Pre-Intermediate)					
Level 2 (Basic)	B250a			P250a	K250
Level 1 (Beginner)	B150			P150	H150

Early December to early February

	Japanese Language				
	General Japanese Language	Japanese Language Skills			
	Grammar	Speaking	Reading	Practice	Characters
	G	S	R	P/W	H/K
Level 6 (Advanced)					
Level 5 (Upper-Intermediate)	G560				
Level 4 (Intermediate)					
Level 3 (Pre-Intermediate)	G350	S350	R350	P350 W350	K350
Level 2 (Basic)	B250b			P250b	
Level 1 (Beginner)					

*Intensive Learning Classes are held for students in the Intensive Japanese Language Program or Japan-Korea Program. If there is any room in these classes, students on the Japanese Language Program for International Students may also register.

*B150, B250b, P150, and P250b are taken together, as a set.

5. Level 1 and 2 Timetable for Second Term 2016

	1 8:50~10:20	2 10:30~12:00	3 13:00~14:30	4 14:40~16:10	5 16:20~17:50
Mon.	B100 a class Ms.Backley C405		K102 Ms.Mishima C402		
	B110 a class Ms.Mishima C401 b class Ms.Y.Sato C402 c class Ms.Yamaguchi C403 d class Mr.Matsumoto C404		K151 Ms.Y.Sato C401		
	B210 a class Ms.Ono C407 b class Ms.Azumi C408				
	B150・B250b Ms.Hayashi R115				
	B250a Ms.Yokosawa R107 (~12/1)		K250 Ms.Yokosawa R107 (~12/2)		
Tue.	B100 b class Ms.Tachibana C401 c class Ms.Abe C402 d class Ms.Inamura C403		K101 Ms.Saito C401		
	B200 Ms.Yamaguchi C404			P250a Ms.Fujita R107 (~11/29)	
	B150・B250b Ms.Ono R105		K201 Ms.Abe C402	P150・P250b Mr.Soejima R115	
	B250a Ms.Yokosawa R107 (~12/1)		K250 Ms.Yokosawa R107 (~12/2)		
Wed.	C170 Ms.Backley C403				
	C270 Ms.Suzuki C404				
	B220 Ms.Usui C405				
Thu.	B100 a class Mr.Sugawara C405 d class Ms.S.Takahashi C406		K102 Ms.Otomo C402		
	B110 a class Ms.Azumi C401 b class Ms.Uchiyama C402 c class Ms.Ono C403 d class Ms.Y.sato C404		K151 Ms.Azumi C401		E000 Ms.Oshitani M305
	B210 a class Ms.Moriwaki C407 b class Ms.Inamura C408		K201 Ms.Y.Sato C404		
	B150・B250b Ms.Usui R115		K250 Ms.Tachibana R107 (~12/2)		
	B250a Ms.Tachibana R107 (~12/1)		ML000 Ms.Mushiake A406		
	B100 b class Mr.Sugawara C401 c class Ms.Uchiyama C402		K101 Ms.Otomo C401		
	B200 Ms.Moriwaki C404		K202 Ms.Mishima C402		
	B220 Ms.Azumi C405		K250 Ms.Uchiyama R107 (~12/2)		
	B150・B250b Ms.Yamaguchi R115				
	B250a Ms.Tachibana R107 (~12/1)				

How to read the timetable:

Japanese Language Program Code

Class Name / Instructor / Classroom

- Classes a-c are the same level and cover the same content.
- Hiragana/katakana is an intensive class held on the following 3 days.

H150	8:50-12:00	13:00-14:30
October 13 (Thu.)	Ms.Usui R115	Ms.Azumi R115
October 14 (Fri.)	Ms.Yamaguchi R115	Ms.Backley R115
October 17 (Mon.)	Ms.Hayashi R115	Ms.Y.Sato R115

Level 3-5

	1 8:50~10:20	2 10:30~12:00	3 13:00~14:30	4 14:40~16:10	5 16:20~17:50
Mon.	S310 Ms.Osada C406	P310 Ms.Osada C406	G460 Mr.Sugawara C403(~12/1)	K400 Ms.Hayashi C401	
	S410 Ms.S.Takahashi C307	P410 Ms.S.Takahashi C307	G560 Mr.Sugawara C403(12/5~)		
			JC500 Ms.S.Sato A307	JL500 Mr.Uehara A307	IC500 Ms.Yamamoto A104
	G350 Ms.Yokosawa R107(12/5~)	R350 Ms.Yokosawa R107(12/5~)	K350 Ms.Yokosawa R107(12/5~)		
Tue.	SP400 Ms.Mushiake A306	S400 Mr.Nakamura C405	W300 Mr.Umeki C403	G300 Ms.Saito C403	
		CC500 Ms.Suematsu A203	G500 Mr.Nakamura C404	JM500 Mr.Nakamura A405	
				WA600 Mr.Kushimoto C303	JS500 Mr.Uehara R115
	G350 Ms.Yokosawa R107(12/5~)	R350 Ms.Yokosawa R107(12/5~)	K350 Ms.Yokosawa R107(12/5~)	W350 Ms.Fujita R107(12/6~)	
Wed.	G320 Ms.Yamaguchi C406	R320 Ms.Inamura C406	S300 Ms.Uchiyama C401	K300 Ms.Inamura C401	K500 Ms.Inamaua A402
	G440 Mr.Soejima C407	R440 Ms.Uchiyama C407	W400 Ms.Usui C402		
			CP400 Ms.M.Takahashi A302		
			TC430 Mr.Umeki C101		
Thu.	G310 Ms.Suzuki C307	R310 Ms.Szuki C307	ML000 Ms.Mushiake A406		E000 Ms.Oshitani M305
	G410 Ms.Hayashi C304	R410 Ms.S.Sato C304	G460 Ms.Hayashi C403	K400 Ms.Inamura C401	MJ500 Mr.Klautau A301
		MH600 Mr.Morikawa A102	G560 Ms.Hayashi C403(12/5~)	R500 Mr.Ichinose C402	PH600 Mr.Sonehara A302
	S350 Ms.Tachibana R107(12/2~)	P350 Ms.Tachibana R107(12/2~)	K350 Ms.tachibana R107(12/5~)		
	S320 Mr.Matsumoto C407	P320 Mr.Matsumoto C407			K300 Mr.Choi A404
	S440 Ms.Mishima C408	P440 Ms.Mishima C408	BJ600 Ms.Taguchi C204	SC430 Ms.Osada A405	MC500 Ms.Oshitani A403
	S350 Ms.Tachibana R107(12/2~)	P350 Ms.Tachibana R107(12/2~)	K350 Ms.Uchiyama R107(12/5~)	P530 Ms.Usui C401	

Map of Kawauchi Campus (p.22-24).

*Dates for classes can be found on p.2-4 of the course list.

6. Class Start Schedule

Level 1

Date			E000	H150	B100			B110	C170	K101	K102	K151	B150	P150
					a	b·c	d	a·b·c·d						
10	3	Mon												
	4	Tue												
	5	Wed												
	6	Thu						○						
	7	Fri												
10	Mon													
	11	Tue												
	12	Wed							○					
	13	Thu		○	○			○			○			
	14	Fri		○		○				○				
	17	Mon		○	○			○			○			
	18	Tue				○	○			○			○	
	19	Wed							○					
	20	Thu	○		○		○	○			○	○	○	
	21	Fri				○				○			○	
	24	Mon			○			○			○	○	○	
	25	Tue				○	○			○			○	○
	26	Wed							○					
	27	Thu	○		○		○	○			○	○	○	
	28	Fri												
10	31	Mon			○			○			○	○	○	
11	1	Tue				○	○			○			○	○
	2	Wed							○					
	3	Thu												
	4	Fri				○				○			○	
	7	Mon			○			○			○	○	○	
	8	Tue				○	○			○			○	○
	9	Wed							○					
	10	Thu	○		○		○	○			○	○	○	
	11	Fri				○				○			○	

Level 2

Date			E000	ML000	B200	B210	B220	C270	K201	K202	K250	B250		P250	
						a•b						a	b	a	b
10	3	Mon													
	4	Tue													
	5	Wed													
	6	Thu				○									
	7	Fri					○								
10	10	Mon													
	11	Tue													
	12	Wed					○	○							
	13	Thu		○		○									
	14	Fri					○			○	○	○			
	17	Mon				○					○	○			
	18	Tue			○				○		○	○		○	
	19	Wed					○	○							
	20	Thu	○	○		○			○		○	○			
	21	Fri			○		○			○	○	○			
	24	Mon				○					○	○			
	25	Tue			○				○		○	○		○	
	26	Wed					○	○							
	27	Thu	○	○		○			○		○	○			
10	28	Fri													
	31	Mon				○					○	○			
11	1	Tue			○				○		○	○		○	
	2	Wed					○	○							
11	3	Thu													
	4	Fri			○		○			○	○	○			
	7	Mon				○					○	○			
	8	Tue			○				○		○	○		○	
	9	Wed					○	○							
	10	Thu	○	○		○			○		○	○			
	11	Fri			○		○			○	○	○			

Level 3

Date			E000	ML000	G300	G310	G320	G350	S300	S310	S320	S350	R310	R320	R350	W300	W350	P310	P320	P350	K300	K350	
10	3	Mon																					
	4	Tue																					
	5	Wed																					
	6	Thu				○							○										
	7	Fri									○									○			
	10	Mon																					
	11	Tue			○											○							
	12	Wed					○							○								○	
	13	Thu		○		○							○										
	14	Fri									○									○		○	
	17	Mon								○									○				
	18	Tue			○											○							
	19	Wed					○		○					○								○	
	20	Thu	○	○		○							○										
	21	Fri									○									○		○	
	24	Mon								○									○				
	25	Tue			○											○							
	26	Wed					○		○					○								○	
	27	Thu	○	○		○							○										
	28	Fri																					
10	31	Mon								○									○				
11	1	Tue			○											○							
	2	Wed					○		○					○								○	
	3	Thu																					
	4	Fri									○									○		○	
	7	Mon								○									○				
	8	Tue			○											○							
	9	Wed					○		○					○								○	
	10	Thu	○	○		○							○										
	11	Fri									○									○		○	

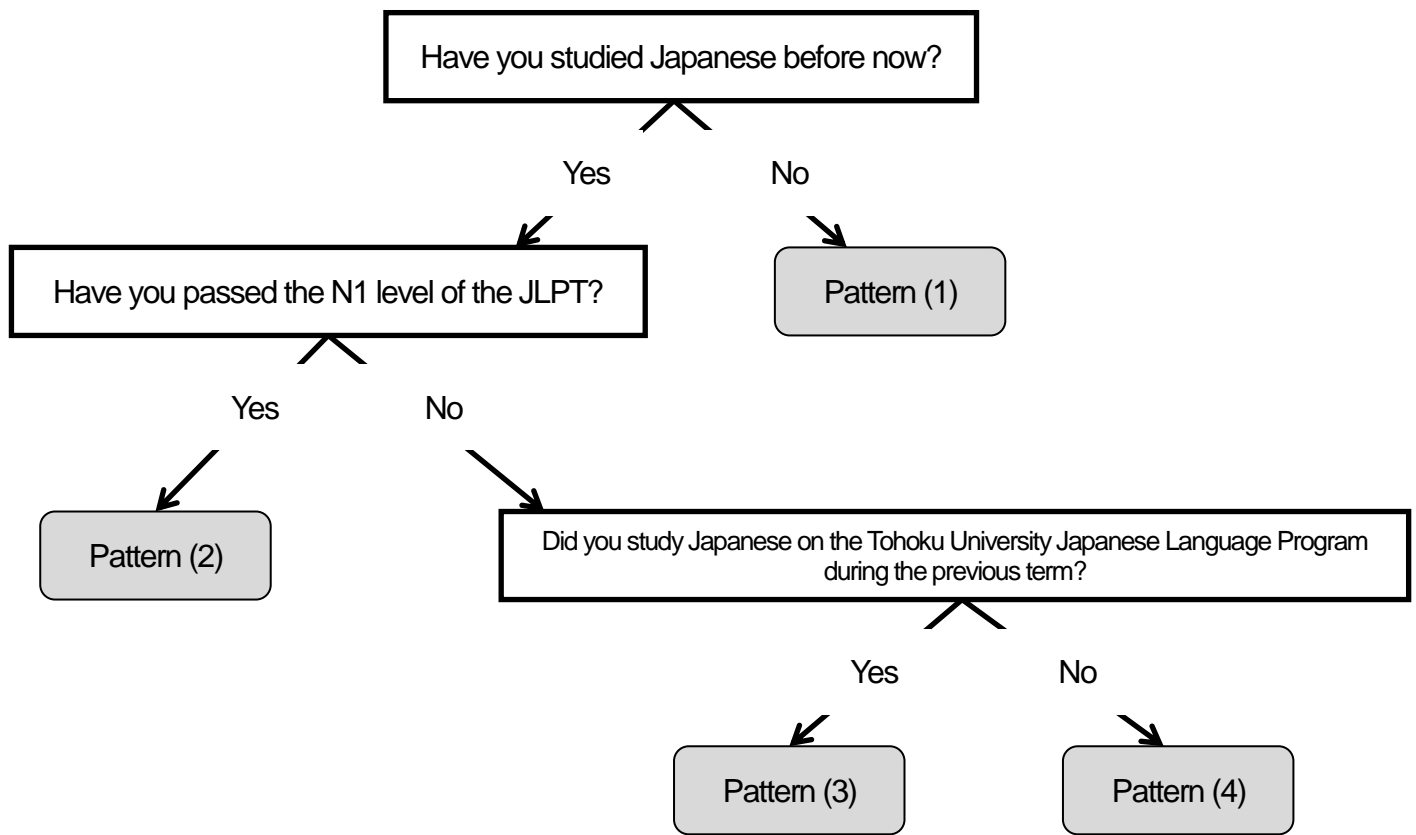
Level 5

Date			E000	ML000	G500	G560	R500	P530	K500	CC500	IC500	JC500	JL500	JM500	JS500	MC500	MJ500
10	3	Mon									○	○	○				
	4	Tue								○				○			
	5	Wed															
	6	Thu															○
	7	Fri						○									
10	Mon																
	11	Tue			○					○				○	○		
	12	Wed							○								
	13	Thu		○			○										○
	14	Fri						○								○	
	17	Mon									○	○	○				
	18	Tue			○					○				○	○		
	19	Wed							○								
	20	Thu	○	○			○										○
	21	Fri						○								○	
	24	Mon									○	○	○				
	25	Tue			○					○				○	○		
	26	Wed							○								
	27	Thu	○	○			○										○
10	28	Fri															
10	31	Mon									○	○	○				
	11	1	Tue		○					○				○	○		
	2	Wed							○								
	3	Thu															
	4	Fri						○								○	
	7	Mon									○	○	○				
	8	Tue			○					○				○	○		
	9	Wed							○								
	10	Thu	○	○			○										○
	11	Fri						○								○	

Level 6

Date			E000	ML000	PH600	BJ600	MH600	WA600				
10	3	Mon										
	4	Tue						○				
	5	Wed										
	6	Thu					○					
	7	Fri				○						
	10	Mon										
	11	Tue						○				
	12	Wed										
	13	Thu		○	○		○					
	14	Fri				○						
	17	Mon										
	18	Tue						○				
	19	Wed										
	20	Thu	○	○	○		○					
	21	Fri				○						
	24	Mon										
	25	Tue						○				
	26	Wed										
	27	Thu	○	○	○		○					
	28	Fri										
10	31	Mon										
11	1	Tue						○				
	2	Wed										
	3	Thu										
	4	Fri				○						
	7	Mon										
	8	Tue						○				
	9	Wed										
	10	Thu	○	○	○		○					
	11	Fri				○						

7. Registering for Classes



Pattern (1): First time Japanese learners

1) Apply using the online form: <http://www.insc.tohoku.ac.jp/english/jlpk1610/>

*The deadline for Pattern (1) is October 21, but you are encouraged to apply early.

*JYPE/COLABS/IPLA/DEEP /DEEP-Bridge students must apply by September 27.

- 2) A certificate specifying that you are a Level 1 student will be sent to the Educational Records and Programs Section or General Affairs Section of the laboratory or department you entered in the online application form.
- 3) Pick up your certificate, and fill out the necessary items in the Registration Form and Registration Card at the end of this guide.
- 4) Take the certificate, Registration Form, and Registration Card to a class that matches your level (see 7. Classes), and ask the instructor for permission to register.
- 5) If the instructor grants permission, have him/her sign/stamp your Registration Form, and give the instructor your Registration Card.
- 6) After the instructor signs/stamps your Registration Form, submit it to your department's Educational Records and Programs Section or General Affairs Section by the submission deadline. (JYPE/COLABS/IPLA students must submit it to the Student Exchange Division.)

Pattern (2): Those who passed the N1 level of the JLPT

- 1) Apply using the online form: <http://www.insc.tohoku.ac.jp/english/jlpk1610/>
*The deadline for Pattern (2) is October 21, but you are encouraged to apply early.
*JYPE/COLABS/IPLA/DEEP /DEEP-Bridge students must apply by September 27.
- 2) Attach an image of your JLPT N1 certificate at the end of the online form.
- 3) A certificate specifying that you are a Level 6 (Tentative) student will be sent to the Educational Records and Programs Section or General Affairs Section of the laboratory or department you entered in the online application form.
- 4) Pick up your certificate, and fill out the necessary items in the Registration Form and Registration Card at the end of this guide.
- 5) Take the certificate, Registration Form, and Registration Card to a class that matches your level (see 7. Classes), and ask the instructor for permission to register.
- 6) If the instructor grants permission, have him/her sign/stamp your Registration Form, and give the instructor your Registration Card.
- 7) After the instructor signs/stamps your Registration Form, submit it to your department's Educational Records and Programs Section or General Affairs Section by the submission deadline. (JYPE/COLABS/IPLA students must submit it to the Student Exchange Division.)

Pattern (3): Those who studied Japanese on the Tohoku University Japanese Language Program during the previous term and wish to try a more advanced level

- 1) Apply using the online form: <http://www.insc.tohoku.ac.jp/english/jlpk1610/>
On the online form, for "14. Japanese Language Proficiency" be sure to enter the number of the Japanese Language Program course you took during the previous semester (e.g. J16Axxxx).
*When applying under Pattern (3), be sure to apply by the deadline for the placement test you plan to take (see p.17).
*JYPE/COLABS/IPLA/DEEP /DEEP-Bridge students must apply by September 27.
- 2) After submitting the online form, print out a copy of the e-mail that is automatically sent to you, bring it with you to the test, exchange it for a test admission ticket, and attend the placement test.
*You MUST print out the e-mail and bring it with you.
- 3) Check the result of your placement test online: <http://www.he.tohoku.ac.jp/SJLE/JLPK/placement.html>
A certificate specifying your level (based on your test result) will be sent to the Educational Records and Programs Section or General Affairs Section of the laboratory or department you entered in the online application form.
- 4) Pick up your certificate, and fill out the necessary items in the Registration Form and Registration Card at the end of this guide.
- 5) Take the certificate, Registration Form, and Registration Card to a class that matches your level (see 7. Classes), and ask the instructor for permission to register.
- 6) If the instructor grants permission, have him/her sign/stamp your Registration Form, and give the instructor your Registration Card.
- 7) After the instructor signs/stamps your Registration Form, submit it to your department's Educational Records and Programs Section or General Affairs Section by the submission deadline. (JYPE/COLABS/IPLA students must submit it to the Student Exchange Division.)

Pattern (4): Those who have studied Japanese before, and wish to continue studying it on the Tohoku University Japanese Language Program

- 1) Apply using the online form: <http://www.insc.tohoku.ac.jp/english/jlpk1610/>
*When applying under Pattern (4), be sure to apply by the deadline for the placement test you plan to take (see p.17).
*JYPE/COLABS/IPLA/DEEP/DEEP-Bridge students must apply by September 27.
- 2) After submitting the online form, print out a copy of the e-mail that is automatically sent to you, bring it with you to the test, exchange it for a test admission ticket, and attend the placement test.
*You MUST print out the e-mail and bring it with you.
- 3) Check the result of your placement test online: <http://www.he.tohoku.ac.jp/SJLE/JLPK/placement.html>
 A certificate specifying your level (based on your test result) will be sent to the Educational Records and Programs Section or General Affairs Section of the laboratory or department you entered in the online application form.
- 4) Pick up your certificate, and fill out the necessary items in the Registration Form and Registration Card at the end of this guide.
- 5) Take the certificate, Registration Form, and Registration Card to a class that matches your level (see 7. Classes), and ask the instructor for permission to register.
- 6) If the instructor grants permission, have him/her sign/stamp your Registration Form, and give the instructor your Registration Card.
- 7) After the instructor signs/stamps your Registration Form, submit it to your department's Educational Records and Programs Section or General Affairs Section by the submission deadline.
 (JYPE/COLABS/IPLA students must submit it to the Student Exchange Division.)

Placement test schedule

Please attend one of the following sessions.

	1st Session	2nd Session	3rd Session	4th Session (*1)
Date/Time	October 5 (Wed.) Arrive by 9:30 10:00-12:00	October 11 (Tue.) Arrive by 9:30 10:00-12:00	October 17 (Mon.) Arrive by 9:30 10:00-12:00	November 25 (Fri.) Arrive by 10:20 10:30-12:00
Application Deadline	September 27	October 5	October 12	November 21
Place	Kawauchi-Kita Campus Multimedia Building M104	Kawauchi-Kita Campus Multimedia Building M104	Kawauchi-Kita Campus Multimedia Building M104	Kawauchi-Kita Campus Multimedia Building M201

*1: This session is for those unable to take the placement test during the 1st through 3rd sessions. Those who take the test during the 4th session will be eligible to register for only the following classes: G350, R350, S350, W350, P350, K350, and G560.

- You may take the placement test only once per semester.

Registration Form
 Submission Deadline
 October 28 (Fri.)

However, the registration deadline for G350, R350, S350, W350, P350, K350, and G560 is December 9 (Fri.).

8. Classes

Levels	Classes
1	H150, B100, B110, B150, P150, C170, K101, K102, K151, K201, K202, K250, E000
2	B200, B210, B220, B250, C270, P250, K101, K102, K151, K201, K202, K250, ML000, E000
3	G300, G310, G320, G350, S300, S310, S320, S350, S400, S410, S440, R310, R320, R350, W300, W350, P310, P320, P350, K201, K202, K250, K300, K350, ML000, E000
4	G410, G440, G460, S300, S310, S320, S400, S410, S440, R410, R440, W400, P410, P440, K300, K400, CP400, SC430, SP400, TC430, ML000, E000
5	G500, G560, S400, S410, S440, R410, R440, R500, W400, P410, P440, P530, K400, K500, CP400, SC430, SP400, TC430, CC500, IC500, JC500, JL500, JM500, JS500, MC500, MJ500, ML000, E000
6	G500, G560, R500, K500, CC500, IC500, JC500, JL500, JM500, JS500, MC500, MJ500, PH600, BJ600, MH600, WA600, ML000, E000

- You cannot take two or more classes whose codes that begin with the same letter (e.g. S310 and S320, R410 and R500 etc.) at the same time. However, two classes whose codes begin with "K" may be taken simultaneously if the instructors give permission.
- In general, for classes that meet twice a week or more, only students able to attend every class will be allowed to register.
- B150, and B250b (which begins from the second half of the term), are taken sequentially. Taking these requires that you also take P150 and P250b (which begins from the second half of the term).
- If your level is marked "Tentative," you may register for classes both at your tentative level, and one level below at the same time (e.g. if you are "Level 4 (Tentative)," you may register for both Level 3 and Level 4 classes). However, if you are a JYPE, COLABS, IPLA, or DEEP-Bridge student and your level is marked "Tentative," you must register for classes only in your tentative level, or the level below it. You cannot register for classes both at your tentative level and one level below at the same time (e.g. if you are "Level 4 (Tentative)," you must choose either only Level 3 or only Level 4 classes).
- If you are a JYPE, COLABS, or IPLA student continuing from the previous term, and your certificate is marked "J only," you must register only for the classes marked "J" in each program.
- Class size limits are as follows:

Intensive Learning Classes up to Pre-intermediate (excluding H150 and G350)	10
H150, B100, B110, C170, B200, B210, B220, C270, G350, P310, P320, P410, P440, P530	15
K101, K102, K151, S300, S310, S320, S400, S410, S440, Japanese culture seminars	20
Other	25

9. Notes on Attending Class

- **You cannot attend Japanese language classes without registering.**
- Only students enrolled at universities in or near Sendai are eligible to attend these classes. Family members of exchange students are not eligible to attend classes unless they are enrolled at a university.
*Students from universities other than Tohoku University must be Level 2 or higher.
- Please purchase your textbooks at the Kawauchi Kita Campus Welfare Facilities (see map). Using copied textbooks (paper photocopies, or digital copies downloaded from the Internet) in class is forbidden. Students using such copies will not be permitted to attend class. Making illegal copies of copyrighted materials is forbidden under Japanese law.
- You cannot attend classes if you miss the Registration Form submission deadline.
- Important notices are posted on the bulletin boards on the south side of Lecture Room building A (see map). Please check these periodically.
- Failure to follow the above rules may result in losing eligibility to attend the Japanese language classes held by Tohoku University.

10. Evaluation

Evaluation Criteria

The letter grades are as follows.

AA	The student's performance was particularly excellent (90-100 points).
A	The student's performance was excellent (80-89 points).
B	The student's performance was good (70-79 points).
C	The student passed (60-69 points).
D	The student failed (0-59 points).
E	The student withdrew from the class.

- You will be notified of your grades at the end of each term. If you request it, your academic advisor will also be notified of your grades.
- If you wish to withdraw from a class, contact the class's instructor. If you stop attending class without withdrawing, you will automatically receive a "D."
- If you miss a class more than twice without speaking to the instructor, you will be considered to have abandoned the class.
- If you do not attend at least two-thirds of the total number of classes, you will receive a "D."

Students Learning Japanese on the Japanese Language Program

- Students who receive a grade of "AA" or "A" in the following classes/levels will advance one Level without having to take the placement test in the next term: Level 1/B1, Level 2/both B2 and K2, three or more classes in Level 3 and above. Two Bs are counted as one A.
- If you require any academic certificates, please inquire with your department's Educational Records and Programs Section or General Affairs Section.
- You cannot obtain credits from classes in the Japanese Language Program in general (unless otherwise specified by your program/department or home institution).

JYPE/COLABS/IPLA/DEEP-Bridge Students

- You will advance one level in the next term by passing the classes designated by your program.

11. E-learning Program

E-learning is a form of study using the Internet. This enables students to study by themselves using Japanese language learning programs and tools on the Web, in addition to learning Japanese by taking classes.

- Various E-learning programs for studying Japanese are listed on the below website.

English Page: <http://nihongo-e-na.com/eng/>

Japanese Page: <http://nihongo-e-na.com/jpn/>

- ALC NetAcademy Japanese Course 2

This is an E-learning program used at Tohoku University. Using this program requires a Tohoku University ID and password. If you don't have an ID and password, please inquire at your department's Educational Records and Programs Section or General Affairs Section. It will take about one week to obtain them.

Level: Basic through Intermediate

Types of Course

Characters (1 unit), Reading (30 units), Listening (30 units), Vocabulary (300 units), Mini-Test (12 units)

Usage

On campus: log in to <https://netacademy.cite.tohoku.ac.jp/onet2/> (use your student ID number and password)

Off campus: requires SRP authentication (attend the guidance session if you don't know how to use it)

- Guidance Session

Guidance sessions for the E-learning program will be held as follows. At these sessions, we will explain how to use various programs, particularly ALC NetAcademy.

October 20 (Thu.): 16:20-17:50 M305 (Multimedia Education and Research Complex)

October 27 (Thu.): 16:20-17:50 M305 (Multimedia Education and Research Complex)

12. Inquiries

Questions about procedures for taking Japanese Language Program classes and applying for academic certificates:

- Inquire at your department's Educational Records and Programs Section or General Affairs Section

Or

- Student Exchange Division, International Education Section

Kawauchi Kita Campus Education and Student Support Center, 2F (see A01 on the map on p.22)

Phone: 022-795-7817

Email: sed2*grp.tohoku.ac.jp (replace * with @)

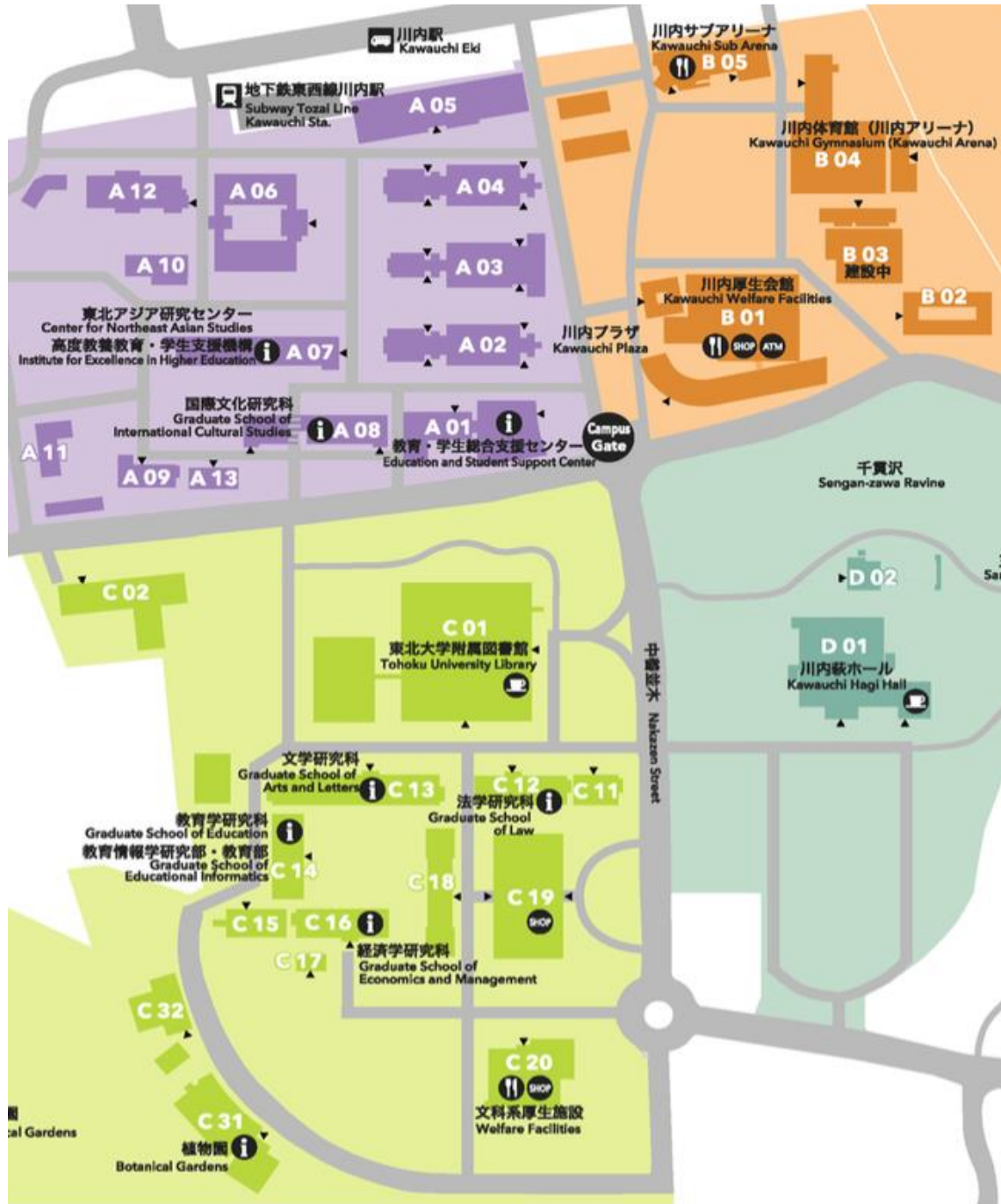
Counseling on problems related to Japanese classes/courses (e.g. instructor's attitude, grading criteria, intercultural misunderstandings, etc.):

JYPE COLABS	Professor Sekiko SATO Kawauchi Kita Campus Kawakita Joint Building 518 Email: sekiko.sato.e8*tohoku.ac.jp
IPLA	Associate Professor Wataru NAKAMURA Kawauchi Kita Campus Kawakita Joint Building 523 e-mail: jlptohoku*gmail.com
DEEp-Bridge	Professor Sekiko SATO Kawauchi Kita Campus Kawakita Joint Building 518 Email: sekiko.sato.e8*tohoku.ac.jp
	Associate Professor Kensaku SOEJIMA Kawauchi Kita Campus Kawakita Joint Building 517 Email: kensaku*m.tohoku.ac.jp
Other students	Associate Professor Wataru NAKAMURA Kawauchi Kita Campus Kawakita Joint Building 523 e-mail: jlptohoku*gmail.com
	Professor Sekiko SATO Kawauchi Kita Campus Kawakita Joint Building 518 Email: sekiko.sato.e8*tohoku.ac.jp

(Replace * with @ in addresses.)

- **Please explain your issue and arrange a meeting by e-mail.**
- For questions on class content and schedules, read this guide carefully, then ask the class's instructor directly if necessary. See pp. 15-17 of this guide regarding class registration procedures, the orientation, and the placement test.

13. The Map of Kawauchi Campus

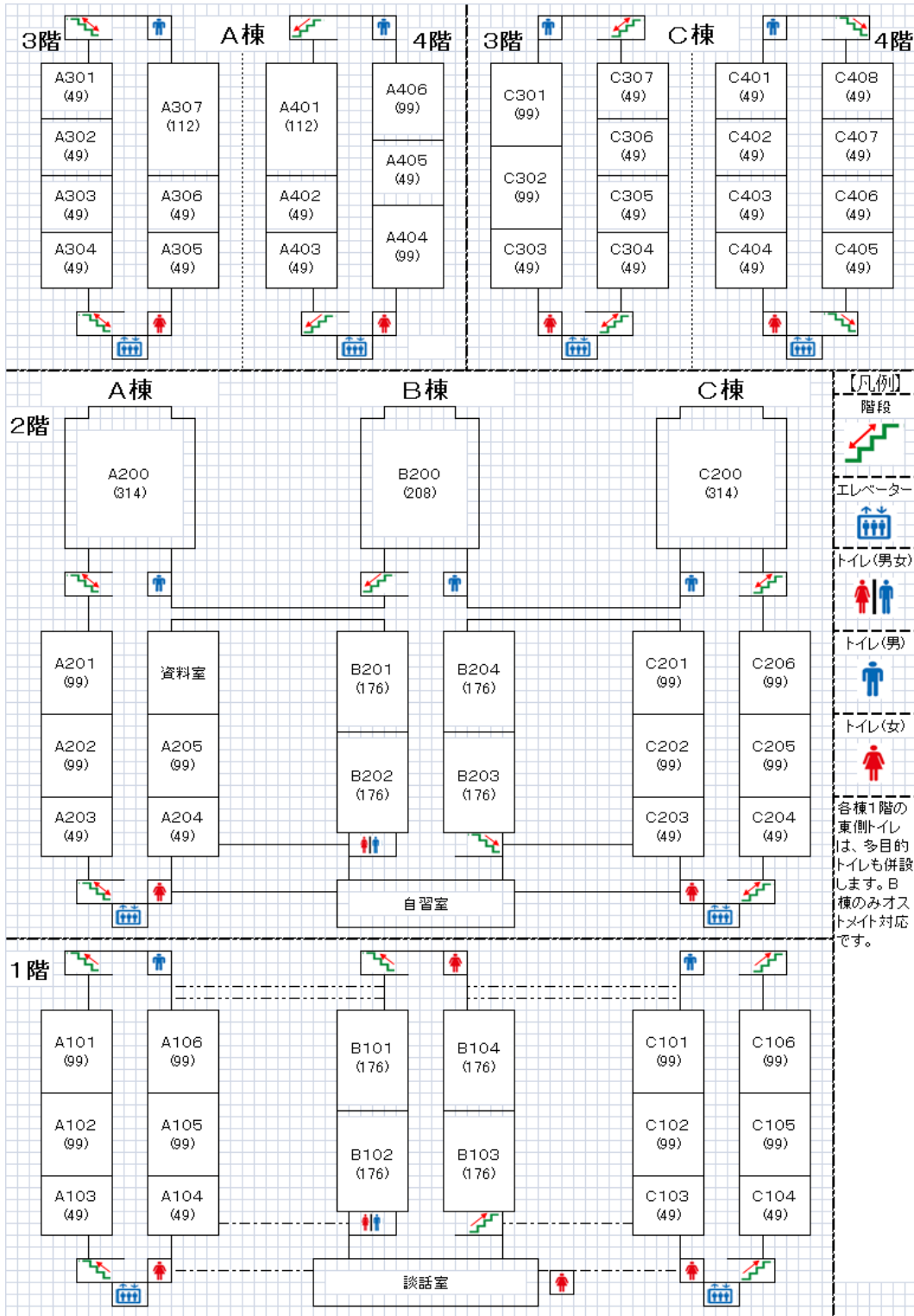


- A 01** 教育・学生総合支援センター
Education and Student Support Center
- A 02** 講義棟A棟
Lecture Rooms A
- A 03** 講義棟B棟
Lecture Rooms B
- A 04** 講義棟C棟
Lecture Rooms C
- A 05** マルチメディア教育研究棟 (教育情報基盤センター)
Multimedia Education and Research Complex (Center for Information Technology in Education)
- A 06** 学生実験棟
Student Laboratories
- A 07** 川北合同研究棟
Kawauchi Research Forum
(高度教養教育・学生支援機構/東北アジア研究センター)
(Institute for Excellence in Higher Education / Center for Northeast Asian Studies)
- A 08** 国際文化研究棟
Graduate School of International Cultural Studies
- A 09** 保健管理センター
Student Health Care Center
- A 10** 教育研究基盤支援棟 4
Education and Research Base Support Building 4
- A 11** 教育研究基盤支援棟 5
Education and Research Base Support Building 5
- A 12** 国際交流棟
International Exchange Building
- A 13** 学生相談所
University Counseling Center

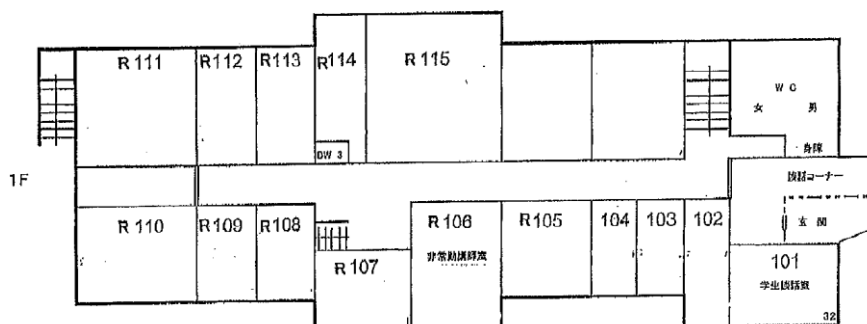
- B 01** 川内厚生会館
Kawauchi Welfare Facilities
- B 02** 川内サークル部室棟
Kawauchi Circle and Club Building
- B 03** 川内課外活動共用施設 (川内ホール)
Kawauchi Extracurricular Activity Shared Facilities (Kawauchi Hall)
- B 04** 川内体育館 (川内アリーナ)
Kawauchi Gymnasium (Kawauchi Arena)
- B 05** 川内サブアリーナ
Kawauchi Sub Arena

- C 01** 東北大学附属図書館
Tohoku University Library
- C 02** 入試センター
Admission Center
- C 11** 文・法合同研究棟
Arts and Letters / Law Joint Building
- C 12** 法学研究棟
Graduate School of Law
- C 13** 文学研究棟
Graduate School of Arts and Letters
- C 14** 文科系総合研究棟 (教育学研究科)
New Humanities Building (Graduate School of Education)
- C 15** 文科系合同研究棟
Humanities Building
- C 16** 経済学研究棟
Graduate School of Economics and Management
- C 17** 経済学研究科演習室
Seminar Rooms
- C 18** 中講義棟
Lecture Rooms
- C 19** 文科系総合講義棟
Lecture Rooms
- C 20** 文科系厚生施設 (メイプルパーク川内)
Welfare Facilities (Maple Park Kawauchi)

14. Classroom Locations Lecture Rooms A, B, C

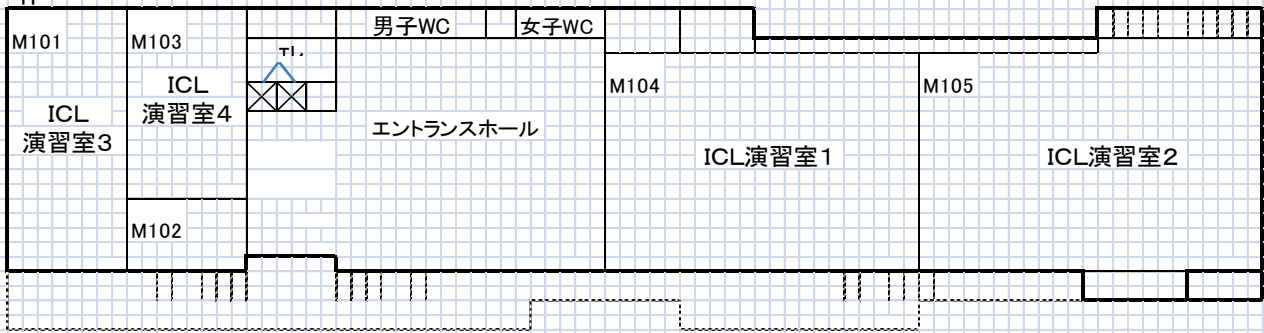


International Exchange Building

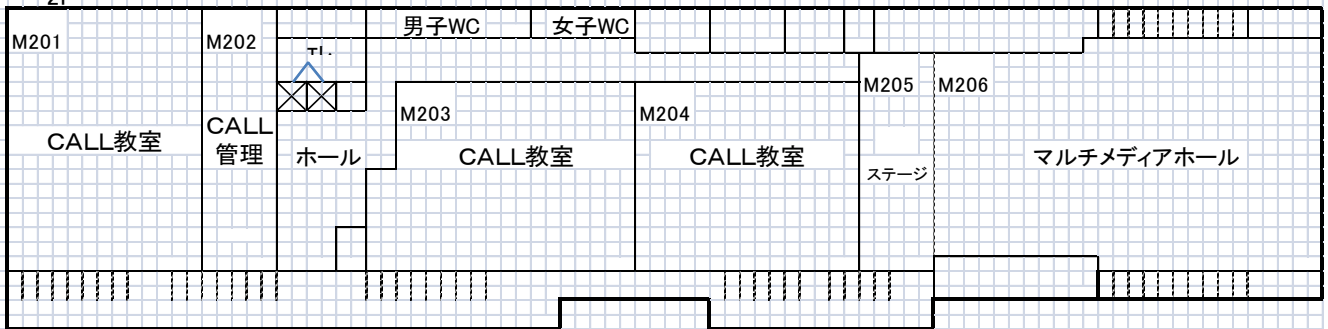


Multimedia Education and Research Complex

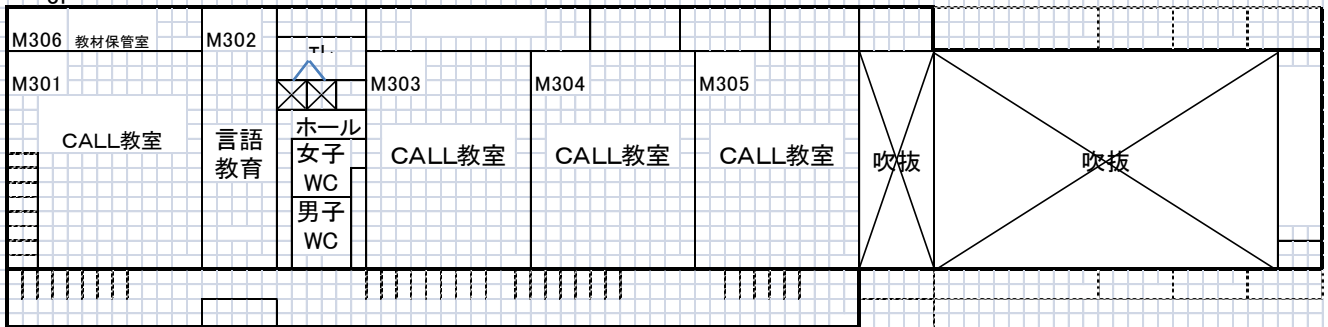
1F



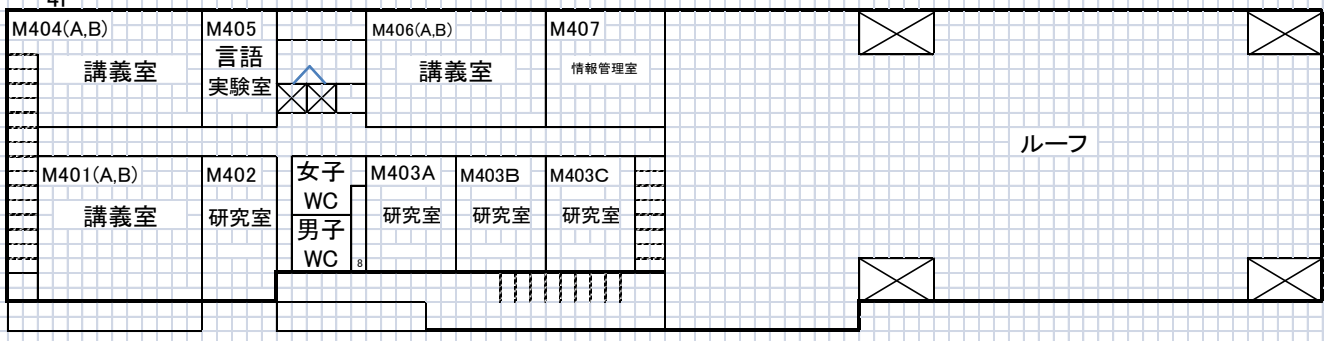
2F



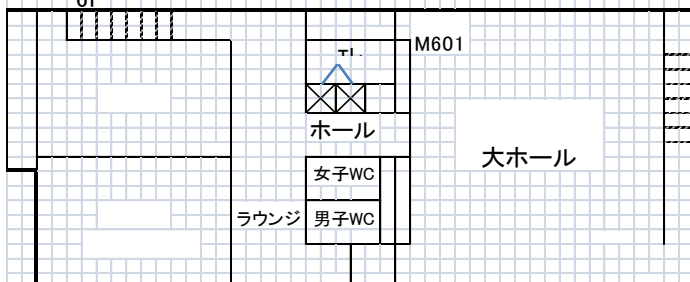
3F



4F



6F



Japanese Language Program at Kawauchi
Registration Form Fall Semester 2016

Name in Full			J16B□□□□	M · F
Nationality			Email	
Full name of Academic advisor	<input type="checkbox"/> Professor · <input type="checkbox"/> Associate professor <input type="checkbox"/> Others ()		Lab/School/Department	
			Extension Number	
Signature				
Present Status	<input type="checkbox"/> Undergraduate Student → Student ID _____ <input type="checkbox"/> Graduate Student (Master level) → Student ID _____ <input type="checkbox"/> Graduate Student (Doctor level) → Student ID _____ <input type="checkbox"/> Undergraduate Research Student <input type="checkbox"/> Graduate Research Student <input type="checkbox"/> Other Research Student <input type="checkbox"/> Exchange student / (<input type="checkbox"/> JYPE / <input type="checkbox"/> COLABS / <input type="checkbox"/> IPLA / <input type="checkbox"/> DEEP / <input type="checkbox"/> DEEP-Bridge / <input type="checkbox"/> Others) <input type="checkbox"/> Others ()			

	1 (8:50~10:20)		2 (10:30~12:00)		3 (13:00~14:30)		4 (14:40~16:10)		5 (16:20~17:50)	
Mon	Course code	Class	Course code	Class	Course code	Class	Course code	Class	Course code	Class
	Instructor's signature		Instructor's signature		Instructor's signature		Instructor's signature		Instructor's signature	
Tue	Course code	Class	Course code	Class	Course code	Class	Course code	Class	Course code	Class
	Instructor's signature		Instructor's signature		Instructor's signature		Instructor's signature		Instructor's signature	
Wed	Course code	Class	Course code	Class	Course code	Class	Course code	Class	Course code	Class
	Instructor's signature		Instructor's signature		Instructor's signature		Instructor's signature		Instructor's signature	
Thu	Course code	Class	Course code	Class	Course code	Class	Course code	Class	Course code	Class
	Instructor's signature		Instructor's signature		Instructor's signature		Instructor's signature		Instructor's signature	
Fri	Course code	Class	Course code	Class	Course code	Class	Course code	Class	Course code	Class
	Instructor's signature		Instructor's signature		Instructor's signature		Instructor's signature		Instructor's signature	

Example

	1 (8:50~10:20)	
Mon	Course code	Class
	B110	a
Instructor's signature		
Hokuko To 印		

Deadline Friday, 28th October

For G350,R350,S350,W350,P350,K350,G560 the closing day is Friday, 9th December.
 Submit this form a to the Kyomu Gakari or the Soumu Gakari of your home department (to the Student Exchange Division in the case of JYPE/COLABS/IPLA students)

Registration card

Name	(J16B□□□□)	Department	
Status at Tohoku University	<input type="checkbox"/> Undergraduate Student <input type="checkbox"/> Graduate Student (Master level) <input type="checkbox"/> Graduate Student (Doctor level) <input type="checkbox"/> Undergraduate Research Student <input type="checkbox"/> Graduate Research Student <input type="checkbox"/> Other Research Student <input type="checkbox"/> Exchange student (<input type="checkbox"/> JYPE/ <input type="checkbox"/> COLABS/ <input type="checkbox"/> IPLA / <input type="checkbox"/> DEEP/ <input type="checkbox"/> DEEp-Bridge / <input type="checkbox"/> Others _____) <input type="checkbox"/> Others(_____)	Course name	
		Day	Mon. Tue. Wed. Thu. Fri.
Academic Advisor		Period	1 2 3 4 5 6

CUT

Registration card

Name	(J16B□□□□)	Department	
Status at Tohoku University	<input type="checkbox"/> Undergraduate Student <input type="checkbox"/> Graduate Student (Master level) <input type="checkbox"/> Graduate Student (Doctor level) <input type="checkbox"/> Undergraduate Research Student <input type="checkbox"/> Graduate Research Student <input type="checkbox"/> Other Research Student <input type="checkbox"/> Exchange student (<input type="checkbox"/> JYPE/ <input type="checkbox"/> COLABS/ <input type="checkbox"/> IPLA / <input type="checkbox"/> DEEP/ <input type="checkbox"/> DEEp-Bridge / <input type="checkbox"/> Others _____) <input type="checkbox"/> Others(_____)	Course name	
		Day	Mon. Tue. Wed. Thu. Fri.
Academic Advisor		Period	1 2 3 4 5 6

CUT

Registration card

Name	(J16B□□□□)	Department	
Status at Tohoku University	<input type="checkbox"/> Undergraduate Student <input type="checkbox"/> Graduate Student (Master level) <input type="checkbox"/> Graduate Student (Doctor level) <input type="checkbox"/> Undergraduate Research Student <input type="checkbox"/> Graduate Research Student <input type="checkbox"/> Other Research Student <input type="checkbox"/> Exchange student (<input type="checkbox"/> JYPE/ <input type="checkbox"/> COLABS/ <input type="checkbox"/> IPLA / <input type="checkbox"/> DEEP/ <input type="checkbox"/> DEEp-Bridge / <input type="checkbox"/> Others _____) <input type="checkbox"/> Others(_____)	Course name	
		Day	Mon. Tue. Wed. Thu. Fri.
Academic Advisor		Period	1 2 3 4 5 6

CUT

Registration card

Name	(J16B□□□□)	Department	
Status at Tohoku University	<input type="checkbox"/> Undergraduate Student <input type="checkbox"/> Graduate Student (Master level) <input type="checkbox"/> Graduate Student (Doctor level) <input type="checkbox"/> Undergraduate Research Student <input type="checkbox"/> Graduate Research Student <input type="checkbox"/> Other Research Student <input type="checkbox"/> Exchange student (<input type="checkbox"/> JYPE/ <input type="checkbox"/> COLABS/ <input type="checkbox"/> IPLA / <input type="checkbox"/> DEEP/ <input type="checkbox"/> DEEp-Bridge / <input type="checkbox"/> Others _____) <input type="checkbox"/> Others(_____)	Course name	
		Day	Mon. Tue. Wed. Thu. Fri.
Academic Advisor		Period	1 2 3 4 5 6

